

Morning Daily Herald

DAILY AND WEEKLY

TERMS OF SUBSCRIPTION:

DAILY: Published every morning except Monday, delivered by carrier, per week \$1.00

WEEKLY: (Published every Friday Morning.) One copy, per annum, in advance, \$7.00

THE MAILS: Mails at the Albany postoffice close for all offices north

THE PACIFIC TIME TABLE: Arrive Albany: 11:30pm 12:30pm

THE UNITED STATES AND CHILI:

The smoke of the Chilean battle fields have cleared away, and the congressional party is in possession of the governmental reins.

The religious craze of a party of ladies in Kingston, Ontario, who had joined the denomination known as free Methodists, sought a very peculiar method of expression.

The beautiful effects of Wisdom's Robertine as a beautifier and preserver of the complexion have been attested by thousands of leading ladies of society and the stage.

The United States has carefully preserved a dignified and proper neutrality during the entire struggle. It was a British man of war, not an American, that carried off the silver which the congressionalists claim to have been public property.

The congressional party is chagrined that it did not obtain immediate recognition from the United States, but that is not a sufficient reason for calling Admiral Brown a spy or Minister Egan a knave and a scoundrel.

The matter of presentation in the World's Columbian Exposition at Chicago, for the state of Oregon, was discussed at the editorial association at Astoria, and the conclusion arrived at that as the legislature, board of commerce, counties and other means have failed, the newspapers of the state would have to take the matter up and carry it through.

Children Cry for FITCHER'S CASTORIA

black hole. This punishment cell is a portion of the cellar of the penitentiary, and so closely shut in with iron doors that daylight never reaches it as long as the convicts are there.

The Peary expedition to Greenland in search of the north polar open sea, in its very starting out is said to have been ill managed.

The commander Lieut. Peary, failed even to lay in coal for the voyage and had to beg a part supply from another vessel that was encountered after the voyage was commenced.

The religious craze of a party of ladies in Kingston, Ontario, who had joined the denomination known as free Methodists, sought a very peculiar method of expression.

The beautiful effects of Wisdom's Robertine as a beautifier and preserver of the complexion have been attested by thousands of leading ladies of society and the stage.

The United States has carefully preserved a dignified and proper neutrality during the entire struggle. It was a British man of war, not an American, that carried off the silver which the congressionalists claim to have been public property.

The congressional party is chagrined that it did not obtain immediate recognition from the United States, but that is not a sufficient reason for calling Admiral Brown a spy or Minister Egan a knave and a scoundrel.

The matter of presentation in the World's Columbian Exposition at Chicago, for the state of Oregon, was discussed at the editorial association at Astoria, and the conclusion arrived at that as the legislature, board of commerce, counties and other means have failed, the newspapers of the state would have to take the matter up and carry it through.

Children Cry for FITCHER'S CASTORIA

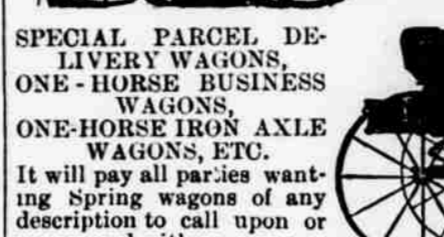
SPRING WAGONS.

OUR STOCK OF SPRING WAGONS IS THE LARGEST AND MOST COMPLETE ON THE PACIFIC COAST, AND COMPRISES ALL THE LEADING STYLES OF

Four-Spring Passenger and Mountain Wagons.



HALF-PLATFORM SPRING WAGONS, SCROLL SPRING WAGONS, "HANDY WAGONS," TAYLOR OR THREE-SPRING WAGONS, HALF-SPRING WAGONS, EXPRESS WAGONS, DELIVERY WAGONS,



SPECIAL PARCEL DELIVERY WAGONS, ONE-HORSE BUSINESS WAGONS, ONE-HORSE IRON AXLE WAGONS, ETC.

It will pay all parties wanting spring wagons of any description to call upon or correspond with us.

We guarantee our vehicles the best, prices lowest, quality considered.

Staver & Walker

NEW MARKET BLOCK, PORTLAND, OREGON.

WE CARRY THE LARGEST AND MOST COMPLETE STOCK ON THE PACIFIC COAST OF

Machinery and Vehicles of Every Description.

SEND FOR CATALOGUE AND PRICE LIST.

W. O. DAVIS & CO. AGENTS ALBANY, OREGON.

Do you want to be happy and make those about you pleased, if so go and get one of those lovely toned pianos at Mrs. Hymans.

If you have not drunk Coronado mineral water, you should try it. It will sober you up, give you a clean stomach and a good appetite.

The Thomas Kay Woolen Mills of Salem, have appointed G. W. Simpson their agent in Albany.

Buy your spectacles and eye glasses at F. M. French's, and have your eyes tested and your glasses properly fitted.

Hanan & Son's fine shoes sell on their own merit, and always give satisfaction. Try a pair at T. L. Wallace & Co.'s.

School Tax Notice.

The school tax in school district No. 5, is now due and payable. Call at my office and pay the same before it becomes delinquent.

C. G. BURKHART, District Clerk.

WE HAVE NOT AN

ELEPHANT

ON OUR HANDS,

BUT WE HAVE THE LARGEST AND BEST SELECTED STOCK OF

Dress Goods,

Fancy Goods

Underwear

Hosiery, Etc.

EVER SHOWN IN ALBANY.

We have just opened our FALL and WINTER CLOAKS and JACKETS, both in cloth and plush goods, and we feel justified in saying that they excel anything ever shown in the VALLEY. We ask all to call and look knowing that we can please you as well as save you money. At

ALBANY, -- OREGON

ALLEN BROTHERS,

Wholesale and Retail Grocers.

CIGARS, TOBACCO AND CHOICE FRUITS

OF ALL KINDS IN LARGE OR SMALL QUANTITIES IN SEASON.

FLINN BLOCK, ALBANY, OREGON.

Star Bakery!

A FULL STOCK OF.....

Staple Groceries

Crockery, Glassware.

The best quality of tea, coffee, candies nuts, etc.

FRESH BAKED BREAD EVERY DAY.

At this old reliable house is also to be found a complete assortment of fresh family groceries, to which is constantly being added all the seasonable lines of groceries and provisions, such as

Cranberries, Fine Pickles, Dried Beef Chipped to order

Anchovy Mustard, Candies and Nuts, Eastern Buckwheat Flour, Cane Goods of All Kinds, Bohemian Glassware, Etc.

These goods were all bought when prices were low and the benefit of the margin will be given to his customers. Remember the place, at the old corner of First and Broadway Sts.

Conrad Myer.

DR. W. C. NEGUS,

Graduate of the Royal College of London, England, also of the Bellevue Medical College.

The Dr. has spent a lifetime of study and practice and makes a specialty of chronic diseases, removes cancers, scrofula enlargements, tumors and wens, without pain or the knife. He also makes a specialty of treatment with electricity. Has practiced in the German French and English hospitals. Calls promptly attended day or night. His motto is "GOD WILL TO ALL."

Office and residence, Lebanon, Oregon.

Messrs. Hyman & Brownell are prepared in their nursery to furnish all kinds of stock, and those intending to plant should call upon them.

Boots and Shoes.

Purchasers of Boots and Shoes bear in mind that big advertisements do not always mean best values. You will have to pay some one a profit as no one can do business without expense. The question is who can sell you the best goods for the least money.

SAMUEL E. YOUNG.

Fresh vegetables every morning from Linn county gardens at Parker Bros.

Try Coronado mineral water, the purest on earth, for sale by all druggists. John Isom Jr., sole agent.

Pay your school tax and save costs of collection.

Willamette University

THE OLDEST, LARGEST & LEAST EXPENSIVE Institution of learning in the Northwest.

336 students in 1887, 495 in 1891—an increase of nearly 50 per cent in four years. Graduates in Art, Business, Classical, Law, Literature, Medical, Musical, Normal, Pharmaceutical and Scientific courses. Graduates from the normal course have all the advantages of graduates from the State Normal schools. Better facilities for teaching next year than ever before. First term begins SEPTEMBER 7th, 1891. For catalogue, with full information, address Wm. S. ARNOLD, A. M., Salem, Or.

Springfield Sawmill

A. WHEELER, (SPRINGFIELD,) PROPRIETOR.

SPRINGFIELD, OREGON.

Albany yard and office on Railroad, between Fourth and Fifth streets, A. Wheeler, Albany Manager.

Having lumber not excelled in quality, and facilities not surpassed the prompt and satisfactory filling of orders, I respectfully solicit a re of the trade.

A. WHEELER.

JULIUS JOSEPH

Manufacturer of Choice Cigars

AND DEALER IN

FINE IMPORTED AND KEY WEST

Cigars Plug and Smoking Tobacco, Meerschaum and Briar Pipes, as well as full line of Smokers' Articles.

No corner to Pfeiffer's candy store, Albany, Oregon.

Ask my agents for W. L. Douglas Shoes. If not for sale in your place ask your dealer to send for catalogue, secure the agency, and get them for you. TAKE NO SUBSTITUTE.

L. E. BLAIN, SOLE AGENT ALBANY, OREGON.

It is a seamless shoe, with no laces or wax thread to hurt the feet; made of the best fine calf, stylish and easy and because we make more shoes of this grade than any other manufacturer, it equals hand sewed shoes costing from \$1 to \$5.

\$5.00 genuine hand sewed, the finest calf shoe ever offered for \$5, equals French imported shoes which cost from \$8 to \$12.

\$4 hand sewed welt shoe, fine calf, stylish, comfortable and durable. The best shoe ever imported shoes costing from \$1 to \$6.

\$3.50 police shoes; farmers, railroad men and letter carriers all wear them; fine calf, seamless, smooth in side, heavy three soles, wear edge; one pair will wear a year.

\$2.50 fine calf; no better shoe ever offered at this price; one trial will convince those who want a shoe for comfort and service.

\$2.25 and \$2.00 Workman's shoes are strong and durable. Those who have given them a trial will wear no other make.

BOYS' \$2 and \$1.75 school shoes are worn by the boys everywhere; they sell on their merits as the increasing sales show.

LADIES \$3 hand sewed shoe, best Dongola; very stylish; equals French imported shoes costing from \$1 to \$6.

Ladies \$2.50, \$2 and \$1.75 shoe for Misses are the best Dongola. Stylish and durable.

Caution.—See that W. L. Douglas' name and price are stamped on the bottom of each shoe.

W. L. DOUGLAS, Brockton, Mass.

G. L. Blackman,

DEALER IN

Drugs, Paints, Oils, Perfumery

AND TOILET ARTICLES,

—And a full line of—

Books, Stationery, Periodicals.

Prescriptions Carefully Compounded.

—Also carries the finest lines of—

Pianos & Organs

IN THE WILLAMETTE VALLEY.

CALL AND EXAMINE THIS STOCK.

ODD FELLOWS TEMPLE, ALBANY, OREGON.

Portland University.

THE STATE AGRICULTURAL COLLEGE

Opens September 18th, 1891.

COURSE OF STUDY arranged expressly to meet the needs of the farming and mechanical interests of the state. Large, commodious and well-ventilated buildings. The college is located in a cultivated and Christian community, and one of the healthiest in the State.

Military Training.

Expenses Not Exceed \$150 for the Entire Season.

Two or more free scholarships from every county. Write for catalogue to B. L. ARNOLD, Pres., Corvallis, Or.

Albany Nurseries.

WE HAVE ON HAND AT OUR nursery on the Corvallis road, one half mile from town, as fine a lot of Fruit Trees of all kinds as can be found anywhere on the coast. If you contemplate planting trees, it will pay to see our stock and get our prices and catalogue free.

HYMAN & BROWNELL.

FURNISHING AGENTS and canvassers looking for a permanent money-making business, no competition, should secure the sale of the Patent Adjustable shoe, Ad dress with stamp, CONSOLIDATED SHOE CO., Salem, Mass.

FOR SALE OR RENT.

JEFFERSON FLOURING MILLS, —Also— SAW AND PLANING MILLS, Jefferson, Marion Co., Or.

For particulars apply to CORBETT & MACLEAY, 64 and 66 Front St., Portland, Or.

THE Yaquina Route!

OREGON PACIFIC RAILROAD

T. J. E. HOGG, Receiver,

AND Oregon Development Co.'s

Steamship Line

225 MILES SHORTER.

AND 22 Hours Less Time Than by any other route.

Accommodations unsurpassed for comfort and safety. Fare and freight via Yaquina and the Oregon Development Company's ships, much less than by any other route which all points in the Willamette Valley and San Francisco.

SAILING DATES.

FROM YACQUINA

Willamette Valley... Aug 4th

Willamette Valley... " 18th

Willamette Valley... " 31st

FROM SAN FRANCISCO

Willamette Valley... July 31st

Willamette Valley... Aug 1st

Willamette Valley... " 15th

The company reserves the right to change steamer or sailing dates.

DAILY PASSENGER TRAINS.

L. Yaquina 7:00 a.m. / Albany 12:30 p.m.

Corvallis 10:35 a.m. / Albany 1:05 p.m.

Albany 12:30 p.m. / Yaquina 4:35 p.m.

U. S. G. train connects at Astoria and Corvallis.

W. M. Hoag, General Manager.

C. J. Houser, G. P. & P. Agent.

Corvallis, O. R.

EAST AND SOUTH

VIA SOUTHERN PACIFIC ROUTE.

THE MOUNT SEASTA ROUTE

California express train run daily

ROUTE 1

7:00 p.m. Lv. Portland... 9:30 a.m.

10:30 p.m. Lv. Albany... 12:30 p.m.

12:30 p.m. Lv. Albany... 2:30 p.m.

2:30 p.m. Lv. Albany... 4:30 p.m.

4:30 p.m. Lv. Albany... 6:30 a.m.

Lebanon Branch.

2:30 p.m. Lv. Albany... 4:30 p.m.

4:30 p.m. Lv. Albany... 6:30 a.m.

6:30 p.m. Lv. Albany... 9:00 a.m.

ALBANY LOCAL DAILY (Except Sunday)

5:00 p.m. Lv. Portland... 9:00 a.m.

9:00 p.m. Lv. Albany... 12:00 a.m.

12:00 p.m. Lv. Albany... 5:00 a.m.

PULLMAN BUFFETSLEEPERS.

TOURIST SLEEPING CARS.

For accommodation of Second Class Passengers attached to Express Trains.

West Side Division.

Between Portland and Corvallis

Mail Train Daily—Except Sunday

7:30 a.m. Lv. Portland... 9:30 a.m.

9:30 p.m. Lv. Albany... 12:15 p.m.

At Albany and Corvallis connect with trains of Oregon Pacific Railroad.

Express Train Daily—Except Sunday

7:30 a.m. Lv. Portland... 9:30 a.m.

9:30 p.m. Lv. Albany... 12:15 p.m.

THROUGH TICKETS

To All Points

EAST AND SOUTH

For tickets and full information regarding rates, etc., call on company's agent at Albany.

R. KOELLER, E. F. ROGERS, Managers.

A WEAK MAN

Can cure himself of the deplorable results of early abuse and perfectly restore his vigor and vitality by our home treatment. The remarkable cures of hopeless cases of nervous debility and private complaints are ever where stamping out quackery. Treatise and question list, a physician's gift to suffering humanity, will be sent free to those afflicted. Address with stamp

PIONEER INSTITUTE, 405 Kearny St., Room 2, San Francisco, Cal.

We carry a large stock of printer's stationery, well assorted, bought direct from the manufacturers at a low figure, and can give the best of work in all kinds of printing for the least money. Try us.

H. C. COBB.

THE MARKETS.

Wheat 85c

Oats—55c

Flour—\$4.25 per bbl

Potatoes—55c

Eggs—50c

Butter—20c

Lard—10 1/2c

Hams—14 1/2c

Shoulders—10c

Bacon—12 1/2c

Hops—30c

Hay—Timothy, \$10, oats and chest

Apples—Green, \$1 per bu.

Pears—Dried, 90c per bu.

Apples dried—bleached & sundried 40c

Chickens—\$4 50 per 500.

Beef 3 1/2c gross.

Mutton—\$10 50 per head.

Hogs 5 1/2c gross.

Veal—6 1/2c.

Wool—18 1/2c.

EGGS FOR SALE.

I will sell full blood Leghorn eggs, both single and rose comb, for \$1.50 per 15, also dotted Wyandots, Light Brahmas, Langshans and Plymouth Rocks at the same price.

L. J. Houser, Tangent, Or.