

Morning Daily Herald

DAILY AND WEEKLY TERMS OF SUBSCRIPTION

Published every morning except Monday... 600

THE MAILS. Mails at the Albany postoffice close

Oregon Pacific Time Table. Arrives Departs

THE DEMOCRATIC NOMINEE. All is not serene in the camp of the national democratic party.

The Albany bridge question is not dead by any means. Bids for its construction will be opened on the 27th inst.

The continued rains which Oregon is now experiencing are unusual, but not "unprecedented" or alarming.

Polk county wool growers are said to have formed a pool for the purpose of keeping the prices of fleece up.

If you suffer pricking pains on moving the eyes, or cannot bear bright light, and find your sight weak and falling, you should promptly use Dr. H. McLean's Strengthening Eye Salve.

Croup, whooping cough and bronchitis immediately relieved by Shiloh's Cure. For sale by Foshy & Mason.

For lame back, side or chest, use Shiloh's porous plaster. Price 25 cents a box.

along with the other companies of their regiment, on Saturday next.

The head of the Victoria seal poacher promises to be several sizes smaller before he returns from the Arctic.

On the asylum farm near Salem a sanitarium is being built. It is all of fir poles, and about 80x20 feet.

The Albany bridge question is not dead by any means. Bids for its construction will be opened on the 27th inst.

The continued rains which Oregon is now experiencing are unusual, but not "unprecedented" or alarming.

Polk county wool growers are said to have formed a pool for the purpose of keeping the prices of fleece up.

If you suffer pricking pains on moving the eyes, or cannot bear bright light, and find your sight weak and falling, you should promptly use Dr. H. McLean's Strengthening Eye Salve.

Croup, whooping cough and bronchitis immediately relieved by Shiloh's Cure. For sale by Foshy & Mason.

For lame back, side or chest, use Shiloh's porous plaster. Price 25 cents a box.

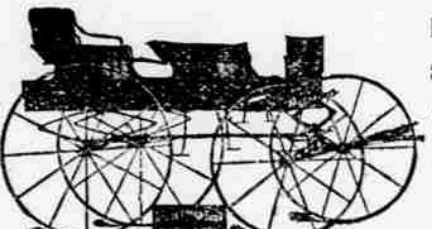
Children Cry for PITCHER'S CASTORIA

Children Cry for PITCHER'S CASTORIA

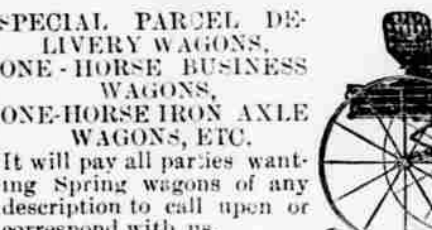
SPRING WAGONS.

OUR STOCK OF SPRING WAGONS IS THE LARGEST AND MOST COMPLETE ON THE PACIFIC COAST, AND COMPRISES ALL THE LEADING STYLES OF

Four-Spring Passenger and Mountain Wagons.



HALF-PLATFORM SPRING WAGONS, SCROLL SPRING WAGONS, "HANDY WAGONS," "TAYLOR" OR THREE-SPRING WAGONS, HALF-SPRING WAGONS, EXPRESS WAGONS, DELIVERY WAGONS.



Staver & Walker NEW MARKET BLOCK, PORTLAND, OREGON.

WE CARRY THE LARGEST AND MOST COMPLETE STOCK ON THE PACIFIC COAST OF Machinery and Vehicles of Every Description.

W. G. DAVIS & CO. AGENTS ALBANY, OREGON.

B&S HOARSE COUGH & BRONCHITIS CURE

ALBANY Collegiate Institute. A Full Corps of Instructors.

The men of this vicinity need not be jealous because their wives talk so constantly about Matthews and Washburn.

School Tax Notice. The school tax in school district No. 5, is now due and payable.

CROWDER BROS. Contractors and Builders. Office on First street with Wallace & Cusick, real estate agents.

Star Bakery!

Staple Groceries Crockery. Glassware. The best quality of tea, coffee, candles, etc.

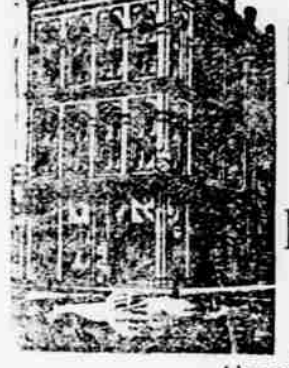
At this old reliable house is also to be found a complete assortment of fresh family groceries, to which is constantly being added all the seasonable lines of groceries and provisions, such as Cranberries, Fine Pickles, Dried Beef Chipped to order, Anchovy Mustard, Candies and Nuts, Eastern Buckwheat Flour, Canned Goods of All Kinds, Bohemian Glassware, Etc.

DR. W. C. NEGUS, Graduate of the Royal College of London, England, also of the Bellevue Medical College.

PIANO. THOSE WISHING A FIRST-CLASS INSTRUMENT, the best made to stand the climate of this coast, can be suited by visiting at Mrs. R. E. Stevens's, opposite the Masonic Temple, First street.

Boots and Shoes. Purchasers of Boots and Shoes bear in mind that big advertisements and offers of big discounts do not always mean best values.

G. L. Blackman, Dealer in Drugs, Paints, Oils, Perfumery AND TOILET ARTICLES.



Books, Stationery, Periodicals. Prescriptions Carefully Compounded

Pianos & Organs IN THE WILLAMETTE VALLEY.

CALL AND EXAMINE HIS STOCK. ODD FELLOWS TEMPLE, ALBANY, OREGON.

JULIUS JOSEPH, Manufacturer of Choice Cigars

FINE IMPORTED AND KEY WEST Cigars Plug and Smoking Tobacco, Meerschaum and Briar Pipes, etc.

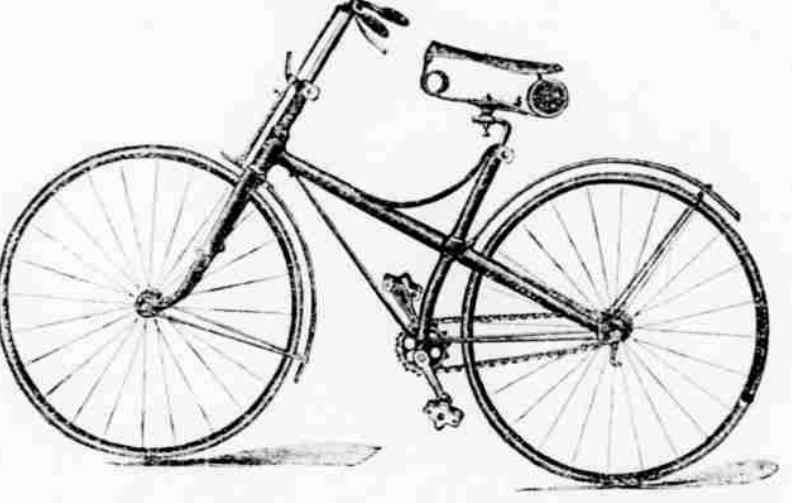
Once = Again

We wish to remind you that we carry the most Complete Line of Hardware, Stoves and Ranges in the Valley.

FEED STORE GENERAL PRODUCE MARKET.

WANTED SPECIALLY - Hay, oats and potatoes, to supply sustenance to the Oregon Pacific Railroad extension and my increasing home trade.

A FULL LINE OF BICYCLES AND TRICYCLES FOR BOYS AND GIRLS



JULIUS GRADWOHL'S GOLDEN RULE BAZAAR STORE.

SPRING ANNOUNCEMENT

The public is invited to inspect the immense stock of Dry Goods FOR THE SPRING OF 1891 AT

His assortment is bigger than ever before, and he is prepared to satisfy customers in quality and prices.

The Highest Market Price Paid for Country Produce.

CATARRH. The Positive Cure. Catarrh of the Bladder, Uterus, etc.

There is a QUARTER OF A CENTURY ago... I had been suffering from pain in my back and general kidney complaint for some time, and had used many remedies without any but temporary relief.

Health is Wealth! Dr. E. C. West's nerve and brain treatment, a guaranteed specific for hysteria, dizziness, fits, headache, nervous prostration, etc.

Simmons Liver Regulator One Dose Worth 100 Dollars.

JOHN SCHMEER'S Livery, Feed & Sale stable. Corner Second and Elmworth Sts. ALBANY, OREGON.

NEW FEED STORE! HAY, OATS AND CHOP FEED. Lime, Plaster & Cement.

Yaquna Route!

OREGON PACIFIC RAILROAD T. E. HOGG, Receiver. Oregon Development Co.'s Steamship Line 225 MILES SHORTER.

Accommodations unsurpassed for comfort and safety. Fares and freights via Yaquna in the Oregon Development Company's ships, much less than by any other route.

SAILING DATES. FROM TANGENT. Willamette Valley... June 24th. Willamette Valley... June 27th.

EAST AND SOUTH SOUTHERN PACIFIC ROUTE.

THE MOUNT SHASTA ROUTE California express trains run daily

Local Pass. Train Daily - (Ex. Sunday) 8:00 a.m. Lv. Albany... 4:00 p.m. Arr. Portland...

PULLMAN BUFFETSLEEPERS. TOURIST SLEEPING CARS. For accommodation of second-class passengers attached to Express Trains.

Express Train Daily - (Except Sunday) 4:30 p.m. Lv. Albany... 8:30 a.m. Arr. Portland...

THROUGH TICKETS EAST AND SOUTH

For tickets and full information regarding rates, etc., call on country agent at Albany.

A WEAK MAN

Can cure himself of the deplorable results of early adulation and perjury by his vigor and vitality by our home treatment. The remarkable cures of hopeless cases of nervous debility and private complaints are ever where stamping out quackery.

PIONEER INSTITUTE, 405 Kearny St., Room 2, San Francisco, Cal.

THE MARKETS.

Wheat - ALBANY QUOTATIONS. Oats - 54c. Flour - 44.25 per bbl. Potatoes - 35c. Eggs - 25c. Butter - 20c. Lard - 16c. Hams - 14c. Shoulders - 10c. Bacon - 15c. Hops - 20c. Hay - Timothy, \$10, oats and chest \$8. Apples - Green, \$1 per bu. Potatoes - Dried, \$1 per bu. Apples dried - bleached by sundried @ 9c. Chickens - 4 \$60/100. Beef - 20c. Mutton - \$20/30 per head. Hogs - 5c. dressed. Veal - 6c. Wool - 18c/21c.

EGGS FOR SALE.

I will sell full blood Leghorn eggs, both single and rose comb, for \$1.50 per 13, also dotted Wyandottes, Light Brahmans, Langhans and Plymouth Rocks at the same price.