

Morning Daily Herald

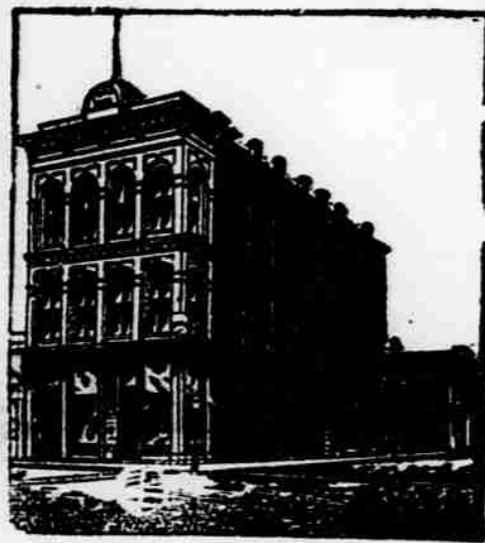
15 CENTS A WEEK.

ALBANY, OREGON, SUNDAY JANUARY 26, 1890.

VOL. V.—NO. 52

FOR PURE DRUGS,

TOILET AND FANCY GOODS
GO TO



G. L. BLACKMAN.

Drugs, Paints, Oils.

Perfumery and toilet articles, also a full line of books and stationery, periodicals, etc. Prescriptions carefully compounded.

IN ODD FELLOWS TEMPLE, Albany Oregon

HE ALSO CARRIES

The Finest Line of Pianos and Organs in the Willamette Valley.
CALL AND EXAMINE HIS STOCK

CAUTION Take no shoes unless W. L. Douglas' name and price are stamped on the bottom. If the dealer cannot supply you, send direct to factory enclosing advertisement for co.



W. L. DOUGLAS
\$3 SHOE FOR GENTLEMEN.

Best in the World. Examine his
Fine Calf, Heavy Hand Grain and Crepe-soled Waterproof.
\$5.00 Genuine Hand Sewed Shoe.
\$4.00 Hand-Sewed Welt Shoe.
\$3.50 Police and Farmers' Shoe.
\$2.50 Extra Value Calf Shoe.
\$2.25 & \$2 Workingmen's Shoe.
\$2.00 and \$1.75 Boys' School shoes.
All Made in Congress, Button and Lace.
\$3 & \$2 SHOES FOR LADIES.
\$1.75 SHOE FOR MISSES.
BEST MATERIAL.
BEST STYLE.
BEST FITTING.
W. L. DOUGLAS.
Brockton, Mass.

Sold by L. E. BLAIN.

What is

CASTORIA

Castoria is Dr. Sam'l Pitcher's old, harmless and quick cure for Infants' and Children's Complaints. Superior to Castor Oil, Paregoric or Narcotic Syrup. Children cry for Castoria. Mothers of Mothers bless Castoria.

Castoria cures Croup, Constipation, Four Shonch, Diarrhoea, Eructation, Stomachic, Biliousness, Indigestion, Fits, Colic, Worms, and all ailments of the bowels. Without narcotic stupefaction.

"I recommend Castoria for children's complaints, as superior to any prescription known to me." H. A. Adams, M.D., 111 So. Oxford St., Brooklyn, N.Y.

DR. CHEVASEL COMPANY, 77 Murray St., New York.



S. K. CORSETS

Perfection of Fit

COMFORT & STRENGTH

The best French hand sewed corset in the market. Try them once. You never will wear any other. Money refunded if not found entirely satisfactory.

S. E. YOUNG,
Sole Agent for Albany

F. H. PFEIFFER.

Albany Soda Works
And manufacturer of—

Choice Confectionery.

We are now prepared to furnish choice, fresh candies of best grade, consisting of pure stick, assorted flavors, mixed candies, extra French and chocolate creams, fancy mixed, candy toys and a general assortment of fine candies.

Wholesale or Retail.

Orders from country dealers promptly attended to. Factory on First Street.
ALBANY OREGON

Suburban Property!

—LOTS IN—

BURKHART'S PARK ADDITION

This Addition offers superior advantages for residence property, commanding a view of the whole city and but a short walk from the business portion of town. For sale by

WEITSMAN & McPHERSON.

W. E. McPHERSON,

FIRST STREET.

REAL ESTATE BROKER.

Insurance business transacted and money loaned. I have a large list of improved and unimproved city property and fruit, garden and farm, and in large and small tracts. As I sell on commission only, if you wish to buy or sell it will pay you to come and see me.

HEWERT, PRACTICAL WATCHMAKER, Jeweler, Albany, Oregon.

THE FIRST WRECK

Caused by Washouts from the California Blockade.

MURDERED HIS WIFE.

Nellie Bly Completes Her Trip Around the World in 75 Days—Eastern News Items.

The Herald's Special Dispatches.

SACRAMENTO, Jan. 25.—A passenger train which left here at 7 o'clock this evening for Knight's Landing was derailed between Davisville and Swingles. The accident was caused by a washout. The trackwalker reported to the superintendent in this city that Engineer C. J. Cox and the fireman were nearly killed. It is not known whether any one else was injured or not. A wrecking train has been sent to the scene of the disaster.

HE WANTS A LATCH KEY.

Why the Prince of Battenberg Is Not Happy.

LONDON, Jan. 25.—The Prince of Battenberg, who has kicked over the traces and is now sulking on board a yacht in the Mediterranean, still declines to communicate with his wife, but as his money can hardly hold out much longer it is expected that he may be heard from shortly. The chief grievance apparently is that he wants a latch key, while Queen Victoria insists that he shall be at home with his wife at dusk.

HEAVY VERDICT.

\$40,000 Damages Awarded Against a Railroad.

CHICAGO, Jan. 25.—What is said to be the largest verdict ever received in the West for personal injuries was awarded to Henry Bush in the United States court yesterday. In his suit against the Northern Pacific railroad the jury awarded him \$40,000. Bush was in the wreck between Hope and Sand Point, Idaho, and became paralyzed in his leg. Negligence on the part of the division superintendent was charged.

SHOT HIS WIFE.

A Husband Commits Murder and Attempts Suicide.

ROME, N. Y., Jan. 25.—John Law, aged 60 years, shot his wife to-night, inflicting fatal wounds, and then cut his throat, but will recover. He also shot at his two children, but missed them. He had lived apart from his wife for some years. To-night he demanded admission to the house, and being refused, shot his wife as above described.

Their Salaries Raised.

WASHINGTON, Jan. 25.—The president has approved the act increasing the pay of the supervisors of the census from \$50 to \$100.

Nellie Bly Home.

NEW YORK, Jan. 25.—Nellie Bly reached here to-day at 4 p. m., closing her trip around the world in 75 days.

CONDENSED TELEGRAMS.

Four Prineville hunters killed 191 jack rabbits in one day.

The markets remain unchanged in the great centers of trade.

The snow is being melted by rains, and more disasters by floods await California.

A dispute about fisheries is causing angry feelings between England and France.

The money men of Brazil have confidence in the new republic. A national bank stock to the amount of \$100,000,000 was subscribed for in a day.

The brother of the archbishop of Naples, Italy, has absconded with \$120,000 of Catholic church money.

The commissioners in session at Portland have fixed the county taxes for the current year at 18.2 mills.

Reports from Northern Nevada state that cattle are dying at an alarming rate from the effects of the severe storm.

The Union Pacific railroad track through the Blue and Cascade mountains is in worse condition than it has ever been known to be.

Tacoma merchants complain of a discrimination of 2 cents a gallon on oil in favor of Portland, by the Standard Oil company.

The Seattle brick layers are still out on a strike. Some were getting \$6 a day for 9 hours and the new scale was \$5 for 8 hours.

A Prosperous "Looking Backward" Colony.

Go away from home for the news, is pretty well illustrated in the following dispatch, found in the New York Tribune from Chicago. Daniel Cronen, the Chief of Production of the Nebalem Valley Co-operative colony, of Western Oregon, has just arrived here from the West and gives a glowing description of this new colony, which is conducted on the theories set forth in Edward Bellamy's novel, "Looking Backward." Mr. Cronen says that the colony, of which he is one of the founders, numbers twenty-

THE NEW NAVY.

The Committee Will Recommend Its Construction.

AN ENORMOUS EXPENDITURE.

A Total of 227 First-Class Battle Ships Which Will Cost \$349,515,000—A Great Work.

WASHINGTON, Jan. 24.—The senate committee on naval affairs held a meeting to-day, at which, after considerable discussion the committee decided upon a policy which will govern it during this congressional year of building up the navy. This is in brief, that great line of battle ships like the English Benbow should be constructed at once. Senators Chandler and McPherson, however, are not in accord with the decision reached, and majority and minority reports will be submitted to the senate. Senator Stanford is not wholly committed to the decision reached.

The naval policy board appointed by Secretary Tracy made recommendations for building ten first-class battle ships of 10,000 ton each; eight first-class, of 8000 each; three second-class, of 7100 tons each; three third-class, of 6300 to 7800 tons, five third-class, of 6000 tons; six harbor monitors, of 4000 to 6000 tons; one cruiser monitor, of 3800 tons; eleven rams, of 2000 to 3300 tons; nine thin-armored cruisers, of 2250 tons; four first-class protected cruisers, of 1500 tons; ten first-class protected, of 5400 tons; twelve second-class protected, of 3000 to 4500 tons; six third-class protected, of 1700 to 3190 tons; ten gun vessels and dispatch boats, of 850 to 1500 tons; sixteen torpedo cruisers, of about 900 tons; three torpedo, depot and artificers' ships, of 5000 tons each; 101 torpedo boats, of 65 tons each, making a total of 227 ships, of \$10,035 tons, at a cost of \$349,515,000. This total includes \$67,965,000 already expended, and authorizes the expenditure of \$281,550,000.

When the committee proceeded to consideration of the recommendations the issue was raised whether it was advisable at this time to begin with the construction of the immense line-of-battle ships proposed, including harbor defense monitors. There are forty-four of these vessels, and they would cost \$202,490,000, while the other vessels together would cost only \$147,025,000. Chandler and McPherson urged that the United States should continue the present policy of building fast cruisers and defer building huge line-of-battle ships until we had a large number of cruisers, or there was some emergency calling for their construction. On this issue the committee divided, the majority agreeing with the policy of the board, and Hale was instructed to report favorably the bill introduced by him several days ago, embodying the recommendations of Secretary Tracy.

SNOW MELTED INTO A FLOOD.

Rivers of California Rising Hourly—Well Founded Alarm.

SAN FRANCISCO, Jan. 24.—Telegraphic advices to-night to the Associated Press from thirty or more points in Northern California state that heavy warm rains have been falling to-day; that the snow is melting rapidly and that the creeks and rivers are now running almost to the top of the banks. The rain-pour still continues and a flood greater than that of a few weeks since is threatened. The danger is greatest in the Sacramento, Napa, and Sonoma valleys.

CLOVERDALE, Jan. 24.—The present storm is unprecedented in the history of this section. The Russian river is higher than ever known. Ranches along the river are damaged badly.

Several houses in Pine Grove, near here, are held in place by heavy ropes. The new bridge across the river is liable to go out.

The railroad between here and Ukiah is washed out for a great length, and it will be many days before trains will again run. The rainfall for the season is 58.70 inches; for the past twenty-four hours, 5.56 inches.

CHICO, Cal., Jan. 24.—Grave apprehensions are felt along the river bottoms over the rise of water. Snow has fallen very low down in the foothills, and to an unprecedented depth. The warm rain of the last three days has melted the snow rapidly. Both Chico creeks are booming higher than in the last flood. The Sacramento river is within two feet of its banks and is rising rapidly.

CAUGHT IN A BLOCKADE.

How the Goddess, Christine Nilsson, Ate Bologna Sausage.

Max Maretzki, in Philadelphia Times. Singers are always hungry, and as a rule, are enormous eaters. Shall I give you one or two instances in point? Yes! Well here goes. Christine Nilsson was a big eater, but she put on airs about her food, but on one occasion when she was under Strakosch's management and I was musical director she had to eat what she could get. We were en route from Cincinnati to Buffalo. On the road, about half-way, I got out and bought a big sausage and a loaf of rye bread, and when the train moved again I began to eat it with quiet a relish. Nilsson, who sat almost directly opposite, turned around with a grimace of disgust on her face. "Who is eating garlic, or sausage, or something?" she asked bitterly. "Bah!" And she took out three or four flacons and sprinkled the perfume all over the

THE NEW NAVY.

The Committee Will Recommend Its Construction.

AN ENORMOUS EXPENDITURE.

A Total of 227 First-Class Battle Ships Which Will Cost \$349,515,000—A Great Work.

WASHINGTON, Jan. 24.—The senate committee on naval affairs held a meeting to-day, at which, after considerable discussion the committee decided upon a policy which will govern it during this congressional year of building up the navy. This is in brief, that great line of battle ships like the English Benbow should be constructed at once. Senators Chandler and McPherson, however, are not in accord with the decision reached, and majority and minority reports will be submitted to the senate. Senator Stanford is not wholly committed to the decision reached.

The naval policy board appointed by Secretary Tracy made recommendations for building ten first-class battle ships of 10,000 ton each; eight first-class, of 8000 each; three second-class, of 7100 tons each; three third-class, of 6300 to 7800 tons, five third-class, of 6000 tons; six harbor monitors, of 4000 to 6000 tons; one cruiser monitor, of 3800 tons; eleven rams, of 2000 to 3300 tons; nine thin-armored cruisers, of 2250 tons; four first-class protected cruisers, of 1500 tons; ten first-class protected, of 5400 tons; twelve second-class protected, of 3000 to 4500 tons; six third-class protected, of 1700 to 3190 tons; ten gun vessels and dispatch boats, of 850 to 1500 tons; sixteen torpedo cruisers, of about 900 tons; three torpedo, depot and artificers' ships, of 5000 tons each; 101 torpedo boats, of 65 tons each, making a total of 227 ships, of \$10,035 tons, at a cost of \$349,515,000. This total includes \$67,965,000 already expended, and authorizes the expenditure of \$281,550,000.

When the committee proceeded to consideration of the recommendations the issue was raised whether it was advisable at this time to begin with the construction of the immense line-of-battle ships proposed, including harbor defense monitors. There are forty-four of these vessels, and they would cost \$202,490,000, while the other vessels together would cost only \$147,025,000. Chandler and McPherson urged that the United States should continue the present policy of building fast cruisers and defer building huge line-of-battle ships until we had a large number of cruisers, or there was some emergency calling for their construction. On this issue the committee divided, the majority agreeing with the policy of the board, and Hale was instructed to report favorably the bill introduced by him several days ago, embodying the recommendations of Secretary Tracy.

SNOW MELTED INTO A FLOOD.

Rivers of California Rising Hourly—Well Founded Alarm.

SAN FRANCISCO, Jan. 24.—Telegraphic advices to-night to the Associated Press from thirty or more points in Northern California state that heavy warm rains have been falling to-day; that the snow is melting rapidly and that the creeks and rivers are now running almost to the top of the banks. The rain-pour still continues and a flood greater than that of a few weeks since is threatened. The danger is greatest in the Sacramento, Napa, and Sonoma valleys.

CLOVERDALE, Jan. 24.—The present storm is unprecedented in the history of this section. The Russian river is higher than ever known. Ranches along the river are damaged badly.

Several houses in Pine Grove, near here, are held in place by heavy ropes. The new bridge across the river is liable to go out.

The railroad between here and Ukiah is washed out for a great length, and it will be many days before trains will again run. The rainfall for the season is 58.70 inches; for the past twenty-four hours, 5.56 inches.

CHICO, Cal., Jan. 24.—Grave apprehensions are felt along the river bottoms over the rise of water. Snow has fallen very low down in the foothills, and to an unprecedented depth. The warm rain of the last three days has melted the snow rapidly. Both Chico creeks are booming higher than in the last flood. The Sacramento river is within two feet of its banks and is rising rapidly.

CAUGHT IN A BLOCKADE.

How the Goddess, Christine Nilsson, Ate Bologna Sausage.

Max Maretzki, in Philadelphia Times. Singers are always hungry, and as a rule, are enormous eaters. Shall I give you one or two instances in point? Yes! Well here goes. Christine Nilsson was a big eater, but she put on airs about her food, but on one occasion when she was under Strakosch's management and I was musical director she had to eat what she could get. We were en route from Cincinnati to Buffalo. On the road, about half-way, I got out and bought a big sausage and a loaf of rye bread, and when the train moved again I began to eat it with quiet a relish. Nilsson, who sat almost directly opposite, turned around with a grimace of disgust on her face. "Who is eating garlic, or sausage, or something?" she asked bitterly. "Bah!" And she took out three or four flacons and sprinkled the perfume all over the

THE NEW NAVY.

The Committee Will Recommend Its Construction.

AN ENORMOUS EXPENDITURE.

A Total of 227 First-Class Battle Ships Which Will Cost \$349,515,000—A Great Work.

WASHINGTON, Jan. 24.—The senate committee on naval affairs held a meeting to-day, at which, after considerable discussion the committee decided upon a policy which will govern it during this congressional year of building up the navy. This is in brief, that great line of battle ships like the English Benbow should be constructed at once. Senators Chandler and McPherson, however, are not in accord with the decision reached, and majority and minority reports will be submitted to the senate. Senator Stanford is not wholly committed to the decision reached.

The naval policy board appointed by Secretary Tracy made recommendations for building ten first-class battle ships of 10,000 ton each; eight first-class, of 8000 each; three second-class, of 7100 tons each; three third-class, of 6300 to 7800 tons, five third-class, of 6000 tons; six harbor monitors, of 4000 to 6000 tons; one cruiser monitor, of 3800 tons; eleven rams, of 2000 to 3300 tons; nine thin-armored cruisers, of 2250 tons; four first-class protected cruisers, of 1500 tons; ten first-class protected, of 5400 tons; twelve second-class protected, of 3000 to 4500 tons; six third-class protected, of 1700 to 3190 tons; ten gun vessels and dispatch boats, of 850 to 1500 tons; sixteen torpedo cruisers, of about 900 tons; three torpedo, depot and artificers' ships, of 5000 tons each; 101 torpedo boats, of 65 tons each, making a total of 227 ships, of \$10,035 tons, at a cost of \$349,515,000. This total includes \$67,965,000 already expended, and authorizes the expenditure of \$281,550,000.

When the committee proceeded to consideration of the recommendations the issue was raised whether it was advisable at this time to begin with the construction of the immense line-of-battle ships proposed, including harbor defense monitors. There are forty-four of these vessels, and they would cost \$202,490,000, while the other vessels together would cost only \$147,025,000. Chandler and McPherson urged that the United States should continue the present policy of building fast cruisers and defer building huge line-of-battle ships until we had a large number of cruisers, or there was some emergency calling for their construction. On this issue the committee divided, the majority agreeing with the policy of the board, and Hale was instructed to report favorably the bill introduced by him several days ago, embodying the recommendations of Secretary Tracy.

SNOW MELTED INTO A FLOOD.

Rivers of California Rising Hourly—Well Founded Alarm.

SAN FRANCISCO, Jan. 24.—Telegraphic advices to-night to the Associated Press from thirty or more points in Northern California state that heavy warm rains have been falling to-day; that the snow is melting rapidly and that the creeks and rivers are now running almost to the top of the banks. The rain-pour still continues and a flood greater than that of a few weeks since is threatened. The danger is greatest in the Sacramento, Napa, and Sonoma valleys.

CLOVERDALE, Jan. 24.—The present storm is unprecedented in the history of this section. The Russian river is higher than ever known. Ranches along the river are damaged badly.

Several houses in Pine Grove, near here, are held in place by heavy ropes. The new bridge across the river is liable to go out.

The railroad between here and Ukiah is washed out for a great length, and it will be many days before trains will again run. The rainfall for the season is 58.70 inches; for the past twenty-four hours, 5.56 inches.

CHICO, Cal., Jan. 24.—Grave apprehensions are felt along the river bottoms over the rise of water. Snow has fallen very low down in the foothills, and to an unprecedented depth. The warm rain of the last three days has melted the snow rapidly. Both Chico creeks are booming higher than in the last flood. The Sacramento river is within two feet of its banks and is rising rapidly.

CAUGHT IN A BLOCKADE.

How the Goddess, Christine Nilsson, Ate Bologna Sausage.

Max Maretzki, in Philadelphia Times. Singers are always hungry, and as a rule, are enormous eaters. Shall I give you one or two instances in point? Yes! Well here goes. Christine Nilsson was a big eater, but she put on airs about her food, but on one occasion when she was under Strakosch's management and I was musical director she had to eat what she could get. We were en route from Cincinnati to Buffalo. On the road, about half-way, I got out and bought a big sausage and a loaf of rye bread, and when the train moved again I began to eat it with quiet a relish. Nilsson, who sat almost directly opposite, turned around with a grimace of disgust on her face. "Who is eating garlic, or sausage, or something?" she asked bitterly. "Bah!" And she took out three or four flacons and sprinkled the perfume all over the

THE NEW NAVY.

The Committee Will Recommend Its Construction.

AN ENORMOUS EXPENDITURE.

A Total of 227 First-Class Battle Ships Which Will Cost \$349,515,000—A Great Work.

WASHINGTON, Jan. 24.—The senate committee on naval affairs held a meeting to-day, at which, after considerable discussion the committee decided upon a policy which will govern it during this congressional year of building up the navy. This is in brief, that great line of battle ships like the English Benbow should be constructed at once. Senators Chandler and McPherson, however, are not in accord with the decision reached, and majority and minority reports will be submitted to the senate. Senator Stanford is not wholly committed to the decision reached.

The naval policy board appointed by Secretary Tracy made recommendations for building ten first-class battle ships of 10,000 ton each; eight first-class, of 8000 each; three second-class, of 7100 tons each; three third-class, of 6300 to 7800 tons, five third-class, of 6000 tons; six harbor monitors, of 4000 to 6000 tons; one cruiser monitor, of 3800 tons; eleven rams, of 2000 to 3300 tons; nine thin-armored cruisers, of 2250 tons; four first-class protected cruisers, of 1500 tons; ten first-class protected, of 5400 tons; twelve second-class protected, of 3000 to 4500 tons; six third-class protected, of 1700 to 3190 tons; ten gun vessels and dispatch boats, of 850 to 1500 tons; sixteen torpedo cruisers, of about 900 tons; three torpedo, depot and artificers' ships, of 5000 tons each; 101 torpedo boats, of 65 tons each, making a total of 227 ships, of \$10,035 tons, at a cost of \$349,515,000. This total includes \$67,965,000 already expended, and authorizes the expenditure of \$281,550,000.

When the committee proceeded to consideration of the recommendations the issue was raised whether it was advisable at this time to begin with the construction of the immense line-of-battle ships proposed, including harbor defense monitors. There are forty-four of these vessels, and they would cost \$202,490,000, while the other vessels together would cost only \$147,025,000. Chandler and McPherson urged that the United States should continue the present policy of building fast cruisers and defer building huge line-of-battle ships until we had a large number of cruisers, or there was some emergency calling for their construction. On this issue the committee divided, the majority agreeing with the policy of the board, and Hale was instructed to report favorably the bill introduced by him several days ago, embodying the recommendations of Secretary Tracy.

SNOW MELTED INTO A FLOOD.

Rivers of California Rising Hourly—Well Founded Alarm.

SAN FRANCISCO, Jan. 24.—Telegraphic advices to-night to the Associated Press from thirty or more points in Northern California state that heavy warm rains have been falling to-day; that the snow is melting rapidly and that the creeks and rivers are now running almost to the top of the banks. The rain-pour still continues and a flood greater than that of a few weeks since is threatened. The danger is greatest in the Sacramento, Napa, and Sonoma valleys.

CLOVERDALE, Jan. 24.—The present storm is unprecedented in the history of this section. The Russian river is higher than ever known. Ranches along the river are damaged badly.

Several houses in Pine Grove, near here, are held in place by heavy ropes. The new bridge across the river is liable to go out.

The railroad between here and Ukiah is washed out for a great length, and it will be many days before trains will again run. The rainfall for the season is 58.70 inches; for the past twenty-four hours, 5.56 inches.

CHICO, Cal., Jan. 24.—Grave apprehensions are felt along the river bottoms over the rise of water. Snow has fallen very low down in the foothills, and to an unprecedented depth. The warm rain of the last three days has melted the snow rapidly. Both Chico creeks are booming higher than in the last flood. The Sacramento river is within two feet of its banks and is rising rapidly.

CAUGHT IN A BLOCKADE.

How the Goddess, Christine Nilsson, Ate Bologna Sausage.

Max Maretzki, in Philadelphia Times. Singers are always hungry, and as a rule, are enormous eaters. Shall I give you one or two instances in point? Yes! Well here goes. Christine Nilsson was a big eater, but she put on airs about her food, but on one occasion when she was under Strakosch's management and I was musical director she had to eat what she could get. We were en route from Cincinnati to Buffalo. On the road, about half-way, I got out and bought a big sausage and a loaf of rye bread, and when the train moved again I began to eat it with quiet a relish. Nilsson, who sat almost directly opposite, turned around with a grimace of disgust on her face. "Who is eating garlic, or sausage, or something?" she asked bitterly. "Bah!" And she took out three or four flacons and sprinkled the perfume all over the

Humorous Drift.

OUR BETTER HALVES.

There's a purple half to the purple grape, and a sweeter half to the peach; There's a warmer half to the human heart which kindly deeds may reach; There's a brighter half to the dreary world where the skies are ever blue, And a better half to every man whose wife is good and true.

When a woman wants the earth, it is with a view of giving it to some man.

"Come where my love lies sneezing—sneezing th' unhappy hours away."

The most popular publication of the day is a work in twelve chapters entitled "Calendar for 1890."

Done by hand: She (dots an art) —Do you draw? He—Well, that depends on the cards I get.

"It strikes me this is something to avoid." It took the tramp as no better a large piece of mince pie.

"Ma, when is your wooden wedding?" "It was when I married your father, Johnnie," she answered grimly.

Bloodgood—Travis is a buck isn't he? DeSmith—Shouldn't wonder. He is made out of clay, and has just been fired.

"There was an old woman who lived in a shoe." Undoubtedly a Western woman, and it was a lot of corn palce, so to speak.

There is one advantage in being a congressman. If somebody else is your salary you can replace it from the national treasury by an appropriation.

The mugwump Boston Herald says that "Grover Cleveland is a big man out of office as he was in." They say he really weighs more now than he did then.

A cordial invitation: His Honor—What made you steal this gentleman's door mat? Prisoner—Su your honor, it said "Welcome" in it, in letters as long as your arm.

The Kansas City Times speaks of the secretary of state as Jim Jim. The Bourbon editor in a sour still clings to the tradition that Jesse James was the perfect of