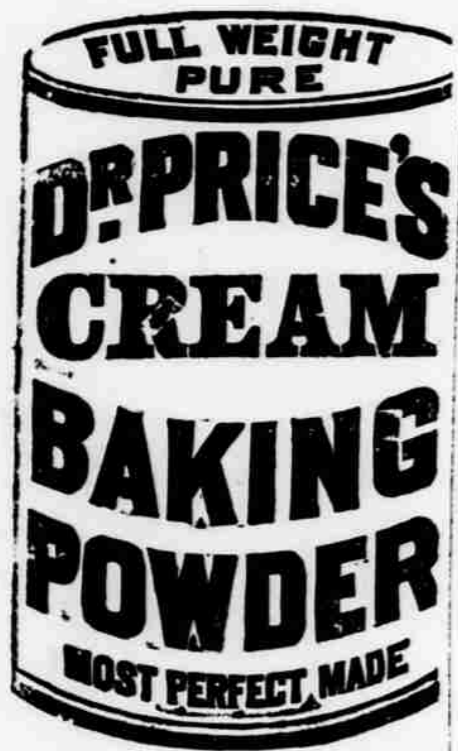


Huchlin's Arnica Salve
The best Salve in the world for cuts
Bruises, Sore Ucers, Salt Rheum,
Lover sores, Letter, chapped hands,
Calloused corns, and all skin eruptions
that cannot be cured by any other
remedy. It is guaranteed to
give perfect satisfaction, or money
refunded. Price 25 cents per box at
Foshy & Mason's.



Its Superior excellence proven in
millions of homes for more than a
quarter of a century. It is used by
the United States government. Endorsed
by the heads of the great
universities as the Strongest, Purest,
and most Healthful. Dr. Price's
Cream Baking Powder does not contain
Ammonia, Lime or Alum. Sold only
in cans. PRICE BAKING POWDER
COMPANY, NEW YORK, CHICAGO, SAN
FRAN. CALIF.

USE
PEARL TOP LAMP
THE BEST CHIMNEYS
IN THE WORLD
MADE ONLY BY
GEO. A. MACBETH & CO. PITTSBURGH, PA.

Star Bakery!
A FULL STOCK OF
Staple Groceries!
Fine Glassware, Crockery
The best quality of tea, coffee, molasses,
and all kinds of delicacies.

CAKES, PIES,
Fresh Baked Bread
Every Day.
As this old and reliable house is able to
furnish a complete assortment of food
provisions, to which is constantly being added
the reasonable home of groceries and provisions
which are

Cranberries,
Fine Pickles,
Dried Beef Shipped to Order,
Anchovy Mustard,
Candies and Nuts,
Eastern Buckwheat Flour,
Canned Goods of All Kinds,
Bohemian Glassware, Etc.
These goods were all bought when prices
were low, and the benefit of the margin will be
given to his customers. Remember the place
is the old corner on First and Broadway Sts.

CONRAD MEYER.
F. H. PFEIFFER
Proprietor of
ALBANY SODA WORKS
And manufacturers of
Choice Confectionery.

We are now prepared to furnish choice, fresh
baked bread, consisting of pure strictly
selected flour, mixed molasses, extra yeast
and chocolate cream, fancy rolls, sandy tops
and a general assortment of fine confectionery.

AT WHOLESALE OR RETAIL.
Orders from country dealers promptly
filled by Foshy & Mason.

Albany, Oregon.

Red Crown Mills.
IRON, LAMING & CO., Prop's.
NEW PROCESS FLOUR.
(Superior for family and bakery use.)
The Best Storage Facilities.

Albany, Oregon.

ALBANY FURNITURE COMPANY
—WHOLESALE AND RETAIL DEALERS IN—
FURNITURE.

First Street, between Ferry and Washington, Albany, Oregon.
CROSSEN & PAISLEY, Proprietors.

STEWART & SOX
—Dealers in—
General Hardware

AND
Agricultural Implements.

Iron, Steel and Coal
Wagons and Buggies
Carpenters' Tools
Builders' Hardware
Powder, Shot, etc.
Giant Powder & Fuse
Saws and Axes.

Rope and Cordage
Blacksmiths' Supplies

Garden and Grass Seeds
And all Implements Used by Farmers!

AGRICULTURAL DEPOT
DEYOE & ROBSON, PROPRIETORS
ALBANY, OREGON.

Have removed to 117 1/2 First Street, and have on hand for the trade of 188
—A FULL LINE OF—
GARDENER'S AND CARPENTER'S TOOLS,
The largest and best variety of
STUDEBAKER AND NEWTON
FARM WAGONS, HACKS AND BUGGIES.
In the central Willamette Valley. Orders from a distance solicited and
promptly filled at lowest rates.

H. J. JONES:
Bookseller, Newsdealer, Stationer.
—AND DEALER IN—
TEXT BOOKS and SCHOOL SUPPLIES.

General News Depot.
Mail orders promptly attended to.

JULIUS GRADWOHL'S
GOLDEN RULE BAZAAR
He has enlarged his stock equal to any on the Coast, and

FAMILY GROCERIES.
AND GENERAL HARDWARE

Rover Bros. Silverware,
French, China and Crystalware,
Boys' Wagons and Doll Carriages,
Fancy Goods, and a General
Assortment of Crockery,
and TOYS.

He Buys Direct and Carries the Largest Stock in the
Willamette Valley,
and on parole Francais. Hier wird deutsch gesprochen.

THE MARKETS.

ALBANY QUOTATIONS.

Wheat—70c.
Oats—25c.
Flour—\$1.25 per bbl
Potatoes—25c
Eggs—15c
Butter—3c.
Lard—12 1/2 @ 15c
Wool—20 1/2 @ 17c
Hams—12 1/2 @ 15c
Shoulders—8 @ 10c
Bacon—12 @ 14c
Hay—Timothy, \$12, oats and wheat, \$8.

Apples—Green, 75 @ 1.00 per bu.
Pineapples—Dried, 5 @ 6c per lb.
Apples dried—bleached or sundried @ 8c.
Chickens—\$2.50 @ 3.50
Hides—Beef hides, greep, 5c,
10c deer skins, 20c; sheep pelts, 10 @ 30c, according to wool.
Beef 2 1/2 @ 4c gross.
Mutton—\$2.00 per head.
Hogs—6 @ 7c, dressed.
Lard—Kees, or 5 gallon tins, 10c;
pails 12c.

Discoveries More Valuable Than
Gold.
Are Santa Able, the California dis-
covery for consumption and diseases
of the throat, Chest and Lungs, and
California Cat-R-Cure, the only guaran-
teed cure for Catarrh, Cold in the
Head and kindred complaints. They
are sold at \$1 per package, or three
for \$2.50, and are recommended and
used by the leading physicians of the
Pacific Coast. No secret compounds.
Guaranteed by Foshy & Mason

An Absolute Cure.
The original Abietine Ointment is
only put up in large two ounce tin
boxes, and is an absolute cure for old
sores, burns, wounds, chapped hands,
and all skin eruptions. Will positively
cure all kinds of piles. Ask for the
original Abietine Ointment. Sold
by Foshy & Mason for 25 cents per
box—by mail 30 cents.

Overland to California.
—VIA—
SOUTHERN PACIFIC COMPANY'S
THE MOUNT SHASTA ROUTE.
Time Between
Albany and San Francisco
35 HOURS 35
California express trains run daily between
Portland and San Francisco.

Lebanon Branch.
8:20 a.m. Lv. Albany, Ar. 6:30 a.m.
9:00 p.m. Ar. Lebanon, Lv. 5:45 a.m.
12:50 p.m. Lv. Albany, Ar. 11:35 a.m.
1:30 p.m. Ar. Lebanon, Lv. 2:00 p.m.

TOURIST SLEEPING CARS.
For accommodation of Second-Class Pas-
sengers attached to Express Trains.
The S. P. Co.'s Ferry makes connection
with all the regular trains on the east side di-
vision from foot of E Street, Portland.

West Side Division.
Between Portland and Corvallis.
Mail Train Daily—Except Sunday
7:30 a.m. Lv. Portland, Ar. 6:30 p.m.
12:30 p.m. Ar. Albany, Lv. 1:30 p.m.
At Albany and Corvallis connect with
trains of Oregon, U. P. and N. P.

Express Train Daily—Except Sunday
4:50 p.m. Lv. Portland, Ar. 2:00 a.m.
8:00 p.m. Ar. Albany, Lv. 5:50 a.m.

THROUGH TICKETS
to All Points
SOUTH AND EAST
Via California.
For full information regarding rates,
maps, etc., call on our passenger agent, Albany,
R. KOELLER, E. P. B. 1043 B St.
Manager Ast. C. E. A. P. A.

THE
Yaquina Route!
OREGON PACIFIC RAILROAD,
AND
Oregon Development Co.'s
Steamship Line!
225 MILES SHORTER
—AND—
22 Hours Less Time.
Than by any other route!

First-class through passenger and freight
from Portland and other points in the Wil-
lamette Valley to and from San Francisco.
Accommodations unsurpassed for comfort and
safety. Fares and freights via Yaquina and
the Oregon Development Company's steam-
ships, much less than by any other route be-
tween all points in the Willamette Valley
and San Francisco.

SAILING DATES.
FROM SAN FRANCISCO
Willamette Valley, Dec. 6th
Willamette Valley, " 13th
Willamette Valley, " 20th

FROM YAQUINA.
Willamette Valley, Dec. 1st
Willamette Valley, " 8th
Willamette Valley, " 15th
The company reserve the right to change
terminals or sailing dates.
C. H. HANBRIE, Jr., Gen. F. & P. Agent,
104 Montgomery Street, San Francisco, Cal.

DAILY PASSENGER TRAINS.
Except Sundays.)
L. Yaquina 6:45 a.m. Lv. Albany 1:00 p.
Corvallis 10:28 a.m. Lv. Corvallis 1:40 p.
Ar Albany 11:30 a.m. Ar Yaquina 5:50 p.
O & C. trains connect at Albany and Corv.

Willamette River Line of Steamers
The Wm. M. Hoag, the N. S. Bentley and
the Three Sisters are in service for both pas-
senger and freight traffic between Corvallis
and Portland and intermediate points, leav-
ing company's wharf, Corvallis, on Tuesdays,
Wednesdays and Saturdays, 10 o'clock and 2:00
o'clock, Portland, three times each week
as follows:

NORTH BOUND.
Lv. Corvallis Mon. Wed. and Fri. 8:00 a.m.
Lv. Albany Mon. Wed. and Fri. 9:50 a.m.
Ar Salem Mon. Wed. and Fri. 3:00 p.m.
Lv. Sola Tues. Thurs. and Sat. 6:00 a.m.
Ar Portland Tues. Thurs. and Sat. 6:00 p.m.

SOUTH BOUND.
Lv. Portland Mon. Wed. and Fri. 6:00 a.m.
Ar Salem Mon. Wed. and Fri. 7:15 p.m.
Lv. Sola Tues. Thurs. and Sat. 1:00 p.m.
Ar Corvallis Tues. Thurs. and Sat. 3:30 p.m.

Wm. M. Hoag,
General Manager,
C. Hoag,
Agent for F. & P.
Corvallis, O. Ore.

Are We to Have Another War

Some political prophets aver that
we shall, before long, have the
shaded by medical science against
disease will never cease until we ar-
rive at the utopian epoch when the
human family shall cease to be afflic-
ted with bodily ailments. One of the
most potent weapons which the ar-
my of medicine furnishes, is Hos-
piter's Stomach Bitters, which is of
special utility as a family remedy, as
it is adapted to the immediate relief
and ultimate cure of those disorders
of the stomach, liver and bowels which
are of commonest occurrence. Indi-
gestion, biliousness and constipation
are inseparable companions, as these
ailments are completely cured by the
Bitters. But the remedial scope
of this superlatively wholesome and
gentle medicine takes in all nervous
debility, rheumatism, and kidney
troubles, its action is so rapid, and
other complaints, being characterized
by unequalled force.

Is the reason people will not, can
not or do not see any difference in
cheap nostrums put up by cheap
John Jones or irresponsible parties
at enormous profits, rather than take
a medicine of good wide reputation
and one that has secured universal satis-
faction at every point? No medicine
in the world for purifying the
blood as Benger's Blood Purifier and
Blood Maker, and every bottle that
does not work will cost you
nothing. Geo. L. Blackman, drug
gist.

When Baby was sick,
We gave her Castoria.
When she was a child,
She cried for Castoria.
When she became Miss,
She clung to Castoria.
When she had Children,
She gave them Castoria.

Enrich.
The motto of California means I
have found it. Only in the land of
sunshine where the orange, lemon,
olive, fig and grape bloom and ripen
and attain their highest perfection in
mid-winter, are the herbs and gum
found that are used in this pleasant
remedy for all throat and lung trou-
bles, Santa Able the ruler of coughs,
asthma and consumption. Try Santa
Able the only guaranteed cure for
catarrh \$1 by mail \$1.10

Cough! and Cough! and Cough!
What in the world is the reason you
will cough and keep coughing and
still keep trying inferior medi-
cines when Benger's Cherry Cough Syr-
up will positively relieve your cough
at once? This is not an advertising
scheme, but an actual fact, and we
guarantee it. Geo. L. Blackman,
druggist.

Children Cry for Pitcher's Castoria
Contractor and Builder.
THE UNDERSIGNED HAVING LO-
cated in Albany solicits patronage
from city and country. Will contract
to build bridges, barns, and all manner
of dwelling houses, including Queen
Anne, Eastlake and Elizabethan style
of buildings. Will furnish plans and
specifications free of charge. Satisfaction
guaranteed. W. C. CASSELL.

Great English Remedy.
Murray's Specific
Before Taking
After Taking

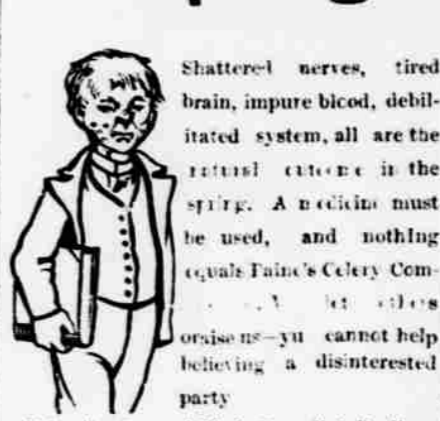
Don't Fail
New Grocery,
STRONG'S OLD CORNER,
All goods are fresh and first-class
and sold at the lowest prices for cash.
Come and be convinced.
For Produce taken in exchange
Very Respectfully,
BARDUE & UNDERWOOD.

BANK OF BROWNSVILLE,
BROWNSVILLE, LINN CO., OREGON
[REORGANIZED JANUARY 1, 1889.]
CAPITAL STOCK, \$25,000
Transacts a general banking and exchange
business. Loans made. Bills discounted.
Collections made on reasonable terms. De-
posits received on current accounts subject
to check. Exchange bought and sold on New
York, Chicago, San Francisco, Portland and
Albany.
J. M. MOYER,
J. P. GALLERATH,
President, Cashier.

Linn County Bank
Transacts a general banking business.
Deposits received on current accounts.
Exchange bought and sold on New York,
Chicago, San Francisco, Portland and
Albany.
J. M. MOYER,
J. P. GALLERATH,
President, Cashier.

Albany, Oregon.

Spring Disorders



I have used two bottles of your Paine's
Colery Compound, and it has given entire
satisfaction as an appetizer and blood pu-
rier.
T. L. BARNES,
Watertown, Dakota.

Shattered nerves, tired
brain, impure blood, debil-
itated system, all are the
natural enemies in the
spring. A medicine must
be used, and nothing
equals Paine's Colery Com-
pound.

Paine's
Colery Compound
is prescribed by physicians, recommended by
druggists, endorsed by ministers, praised by
usurians and guaranteed by the manufacturer,
as a spring medicine which will do all that is
claimed for it. Use it this spring, and see
how quickly it tones you up.

Purifies the Blood.
Full accounts of wonderful cures made by
Paine's Colery Compound after other medi-
cines and the best physicians had failed, sent
free on request.
There is no King like it.
\$1.00, 50c, 25c, 10c, 5c, 2c, 1c.

Color Anything any Color.
Simple, Permanent, Economical.
It is Easy to Use With Diced and Dyes.
10 cents each.
25 Colors.

FARMERS AND MERCHANTS
INSURANCE CO.
ALBANY, OREGON.

1888 1889

DRY GOODS
DRESS GOODS
CLOAKS
FANCY GOODS.
MEN'S CLOTHING.
CLOTHING.
HATS AND CAPS.
FURNISHING GOODS
BOOTS AND SHOES.
LADIES AND CHILDRENS
SHOES.
ALL AT LOW PRICES.

G. W. SIMPSON,
DEALER IN
General Merchandise!

ALBANY IRON WORKS,

Manufacture steam engines, grist and saw mill machinery, iron fronts and
all kinds of heavy and light work in iron and brass castings. Special atten-
tion paid to repairing all kinds of machinery. Patterns made on short notice.
E. F. SOX, President.
C. H. STEWART, Secretary.

SPRINGFIELD SAWMILL
A. WHEELER, SPRINGFIELD, PROPRIETOR.
SPRINGFIELD OREGON
Albany yard and office on Railroad, between 4th and 5th streets.
A. Wheeler, Albany Manager.
Having lumber not excelled in quality, and facilities not surpassed for the
prompt and satisfactory filling of orders. I respectfully solicit a share of the
trade.
A. WHEELER

Illinois Furniture House!
THOS. BRINK.
Best Line of Furniture In the City of Albany!
Fancy Wicker Chairs Lounges Parlor
Cornice Poles Mirrors Feather
Pillows Spring Mattresses,
Window Shades Walnut Exten-
sion Tables Suits.

And what you can't find at other houses, I have it. In fact every-
thing that is kept in a first-class house.
Ash, Maple and Walnut Chamber sets, Chairs,
Spring Beds, Lounges Etc., etc. at Prices that
CANNOT BE UNDERSOLD.
ALBANY OREGON

JULIUS JOSEPH
Manufacturer of Choice Cigars
—AND DEALER IN—
FINE IMPORTED AND KEY WEST
Cigars, Plug and Smoking Tobacco, Meerschaum and Briar Pipes,
full line of Smokers' Articles. Also dealer in
CALIFORNIA AND TROPICAL FRUITS,
Next door to Burkhardt & Keeney's Real Estate Office, Albany Oreg.

The City Liquor Store,
M. BAUMGART, Proprietor.
Next door to the City and Ferry, Albany, Oregon.
Keeps constantly on hand the finest imported and domestic whiskeys, liquors, cigars
and all the first-class liquors in the city.
SPECIAL ATTENTION PAID TO GUESTS FROM THE COUNTRY.