

Morning Daily Herald

DAILY AND WEEKLY

TERMS OF SUBSCRIPTION

DAILY Published every morning except Monday... Office copy, per annum, in advance \$2.00

WEEKLY (Published every Friday Morning) Office copy, per annum, in advance \$2.00

THE MAILS Mails at the Albany postoffice close For all offices north

THE NEW YEAR The year 1888 has been a prosperous one for the American people, and the citizens of Albany

It is perhaps with pardonable pride that we refer to ourselves this morning in greeting our readers with a twelve page, illustrated issue, setting forth the resources of Albany

ALBANY is the growing metropolis of the Willamette Valley, a fact which newcomers and men seeking investment are fast discovering

EDITORIAL NOTES

ALBANY is the growing metropolis of the Willamette Valley, a fact which newcomers and men seeking investment are fast discovering

If political office be a public trust, then getting down to a cash in hand basis is a long way off in the dim and distant future

The waterways of the country are nature's ready-made highways for man to transport his products upon, and nature has lavishly spread them throughout the land

Lost opportunities loom up like the gloomy gravestones in a deserted grave yard; foolish people spend their time in mournfully contemplating and bewailing over them

The fact that the girls and others in domestic service in the city of Boston, sent as Christmas presents to parents and relatives in Ireland, fully one hundred thousand dollars, is vouched for and speaks in eloquent terms of the warm heartedness of the children of the emerald isle

Linn county's broad and fertile lands are unsurpassed in productiveness, and are the natural home of the cereals and all kinds of fruit

REFERENCE to any good map will show that Albany is the most important railroad center in the entire state. The work of establishing and building up manufacturing has commenced

ONE of the most essential uses of forests, in which our most noble state of Oregon is at present so well supplied, is to intercept and precipitate the moisture floating inland from the ocean mists, and to conserve it for gradual expenditure in fertilizing the land and feeding vegetation

LINN COUNTY

Rich Lands Offered to Those Seeking Location or Investment

This portion of Oregon presents a field offering superior inducements to those desiring homes is made apparent when the resources of Linn county are briefly noticed

It embraces the central and most fertile part of the far famed Willamette valley. It is probably the best watered section of the state

The county embraces between six and seven tiers of townships from north to south, and from eleven to twelve from east to west

Those desiring to invest in lands in this portion of the state, either in city or country property, will find it to their advantage to apply to Messrs. Curran & Monteith, the live real estate dealers of Albany

BROWNSVILLE BUSINESS NOTES

Owen Osborn, corner of Mill and Cross streets, carries a full stock of drugs, toilet articles, optical goods, picture frames, etc

Arlington Hotel, Mrs. M. E. Wilson, proprietor. Board from \$1 to \$2, day or week. Stage leaves here for all points, daily

S. P. Barger, dealer in fine furniture, bedding, picture frames, sewing machines, brackets, etc

Bank of Brownsville. This institution was founded during the fall of 1887, with J. W. Moyer as president; W. R. Kirk, vice-president; and Peter Hume, cashier and manager

Legal Ability Appreciated. In the person of D. R. N. Blackburn, now holding the position of county and probate judge, Linn county has an able official

W. C. Tweedale. During the past year this enterprising stove and hardware dealer, who has been doing business with the people of Albany and Linn county for 28 years, has removed into his new brick, erected on the site of his old building, where he has elegant quarters

Thomas Hopkins. Among the new establishments opened during the year is the stove and tinware store and plumbing establishment of Thos. Hopkins, formerly of the firm of Tweedale & Hopkins

Brownell & Stannard. The novel adv. of these enterprising grocers will be found in our advertising columns. They are successors to Redfield & Brownell, of Albany

HARRISBURG

An Important Factor in Linn County's Past and Future

GREAT NATURAL ADVANTAGES

A Location Unsurpassed—Excellent Opportunity for Investments—A Chance for Energetic Development

Situated upon the Willamette river in the southwest portion of Linn county, in the widest and fertile part of the valley, surrounded by productive wheat fields and yearly bearing orchards of magnificent fruit, is Harrisburg, a city that has ever borne a conspicuous part in the eventful history of Linn county

During the past year Mr. R. A. Rampy, who is one of the live, wide-awake, leading business men of Harrisburg, has established a banking business in a neat brick building erected especially for that purpose

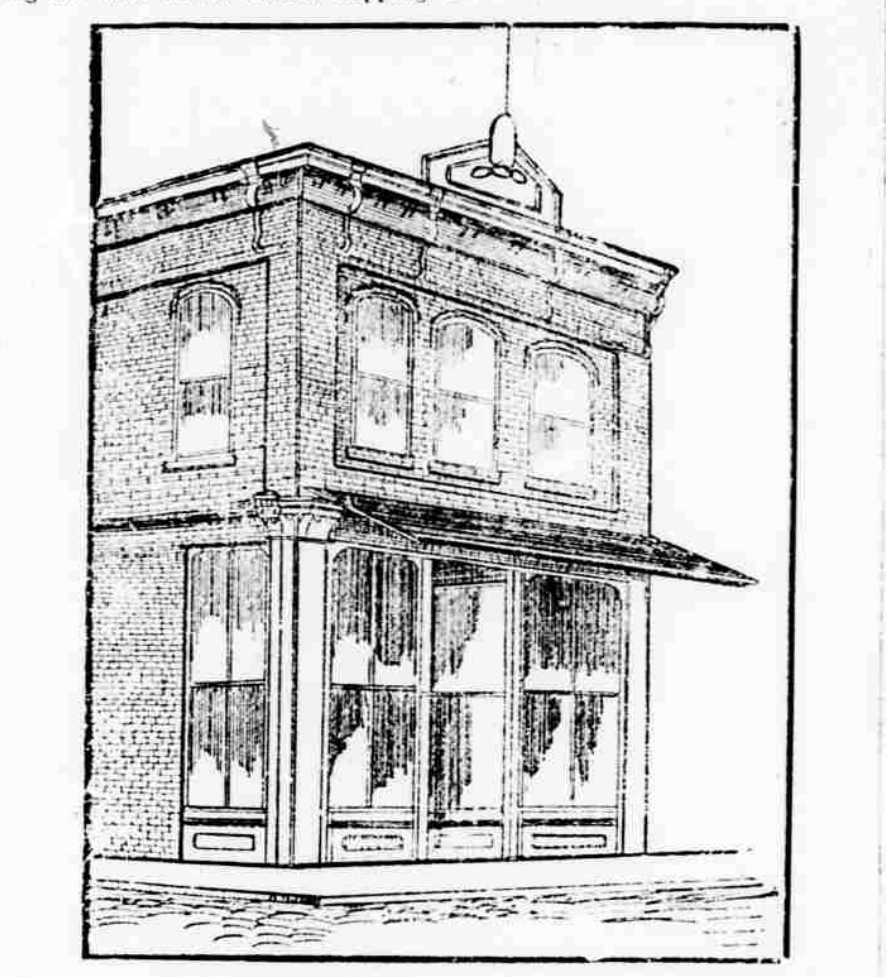
May & Senders, the leading merchants, continue as they have in the past, to carry an immense stock of dry and general merchandise goods, and command a big trade

The drug business is well represented by Mr. Damon Smith's well stocked and neatly kept store; J. D. Bennett has charge of Uncle Sam's post office and business, and runs in connection therewith a well regulated grocery business; F. M. Hyde and Robert White, the former owners of the butcher business, have retired and the shop is now run by Joseph Watkins who keeps a full supply for customers

Henry Keams has established a reputation in the furniture line and maintains it; Geo. Isham as a boot maker gives satisfaction. Myron

Isham has developed quite a talent for vocal music and makes engagements in the Sunday line for religious meetings, being exemplary and devoted in his undertaking, and Harrisburg may yet be as proud of him as the whole country is of Siskey

A good and complete ivory stable is owned and managed by Dan M. Clain; Levi Douglas runs a feed and chop mill with serious intentions of developing into a genuine miller; the dray and transfer business is well represented by P. H. Couch. A very good start for a system of water works has been put in operation by C. F. Wright, run by a wind mill force pump, being a very praise worthy enterprise



ODD FELLOWS' BUILDING, HARRISBURG

station and a fruit dryer, J. C. Sabin does a produce and commission business, and G. H. Butler keeps as well a regulated saloon as can be found in the country

In the medical profession at Harrisburg are several accomplished and successful practitioners. Dr. W. H. Davis, Dr. W. F. Mendonhall, and Dr. J. F. Hendrex are practicing physicians, while Dr. H. A. Davis a veteran in the practice, has devoted his time of late to farming and only responds to calls of personal friends

The public schools are largely attended and are under the efficient management of Prof. J. H. Jewett and Mrs. W. F. Mendonhall



G. L. BLACKMAN

Successor to E. W. Langdon. Dealer in Drugs, Paints, Oils

Perfumery and toilet articles, also a full line of books and stationery, periodicals, etc. Prescriptions carefully compounded

IN ODD FELLOWS' TEMPLE, Albany Oregon

H. J. JONES, Bookseller, Newsdealer, Stationer, AND DEALER IN TEXT BOOKS AND SCHOOL SUPPLIES

Fine stationery, miscellaneous books, photograph and autograph albums, inkstands, ink, pencils, etc. Sheet music, music books, and all kinds of musical merchandise

General News Depot. Mail orders promptly attended to. Subscriptions received for leading newspapers and magazines yearly prices

The Latest Triumph in Science THE ONLY ONE IN LINN COUNTY AT F. M. French's

Corner Jewelry Store, ALBANY, OREGON. EACH EYE FITTED SEPARATE Full Stock of Spectacles and Eye Glasses constantly on hand. PRICES LOW

Revere House Sample Rooms WITH BILLIARD HALL AND CLUB ROOMS. J. B. WILLIAMS, Proprietor

CHOICE WINES AND LIQUORS. Kept constantly in hand. A full line of imported and domestic cigars on sale. Everything first class. At Revere House, Albany, Oregon

1888 For the Holidays 1889

Nothing is nicer than the Fine Watches



At the old and established Jewelry Store of H. EWERT,

F. L. KENTON Dealer in Staple and Fancy GROCERIES

Confectionery, Cigars and Tobacco. Subscriptions received for leading Newspapers and Magazines

NEAR THE POSTOFFICE, ALBANY, OREGON

L. E. BLAIN

The Leading Clothier, Carries the Largest Line of Men's and Boys' Clothing, Furnishing Goods, Etc. in the Willamette Valley

SUITS MADE TO ORDER In His Merchant Tailoring Department. FOSTER BLOCK, ALBANY

WILL BROS Dealers in all the leading Guns, Pistols, Sewing Machines, Organs, Pianos, A full line of Sheet music, musical merchandise, ammunition, fishing tackle, etc. Warranted razors, butcher and pocket knives. The best kinds of sewing machines

NEEDLES, OIL and Extras for all MACHINES LINN COUNTY AGENTS FOR NORTHWESTERN FIRE INSURANCE COMPANY. Repairing of sewing machines, musical instruments, guns, etc., neatly done

AT COST! STILL TO THE FRONT!

G. W. SIMPSON. Having purchased the stock of Clothing, Gents Furnishing Goods, Boots, Shoes, Etc., of C. B. Roland & Co. is now prepared to offer Better Bargains than Ever

Having a complete assortment of General Merchandise, bought at big discount, which he still proposes to sell at cost. Purchasers will do well to call and get their prices before buying elsewhere, as you can save from 25 to 30 per cent. The highest market price paid for country produce of all kinds, either in cash or goods