

Its Superior excellence proven in millions of homes for more than a quarter of a century. It is used by the United States government. Endorsed by the heads of the great universities as the strongest, purest, and most healthful. Dr. Price's Cream Baking Powder does not contain Ammonia, Lime or Alum. Sold only in cans. PRICE BAKING POWDER COMPANY, NEW YORK, CHICAGO, LOUIS.

Star Bakery!

Staple Groceries! Fine Glassware, Crockery. The best quality of tea, coffee, molasses, etc. CAKES, PIES, Fresh Baked Bread Every Day. All this old and reliable house is able to furnish a complete assortment of fresh bread, cakes, pies, etc., which is constantly being added to the reasonable lines of groceries and sundries such as Cranberries, Fine Pickles, Dried Beef Chipped to Order, Anchovy Mustard, Candies and Nuts, Eastern Buckwheat Flour, Canned Goods of All Kinds, Bohemian Glassware, Etc. These goods were all bought when prices were low, and the benefit of the margin will be given to his customers. Remember the place at the old corner on First and Broadway Sts.

CONRAD MEYER.

Proprietors of ALBANY SODA WORKS And manufacturers of Choice Confectionery. We are now prepared to furnish choice, fresh made of best grade, consisting of pure white, assorted flavors, mixed candies, extra French and chocolate cream, honey mixed, candy tins and a general assortment of fine candies.

Red Crown Mills.

NEW PROCESS FLOUR The Best Storage Facilities. Orders from country dealers promptly filled. Albany, Oregon.

NOVELTIES

BUCHINGS FANCY APRONS, STAMPED TIDIES. Table & Bureau Scarfs. SAMUEL E. YOUNG'S. This is the top of the GENUINE PEARL TOP LAMP CHIMNEY. All others similar are imitation. This exact Label is on each Pearl Top Chimney. A dealer may say and think he has others as good, BUT HE HAS NOT. Insist upon the Exact Label and Top. For sale every where. Made only by Geo. A. Mearns & Co. Pittsburg, Pa.

THE MARKETS.

Wheat has dropped to 76 cents. It is thought this will only be temporary, and that the price will again go up in a day or two. ALBANY QUOTATIONS. Wheat—76. Oats—25@30c. Flour—\$4.25 per bbl. Potatoes—25c. Eggs—25c. Butter—23c. Lard—12 1/2@15c. Wool—6 1/2@17c. Hams—12 1/2@15c. Shoulders—8@10c. Bacon—12@14c. Hay—Timothy, \$12, oats and cleat, \$8. Apples—Green, 25@30c per bu. Plums—Dried, 50c per bu. Apples dried—bleached 5c sundried @ 8c. Chickens—\$2.50@3.50. Hides—Best hides, green, 57c. 10c; deer skins, 20c; sheep pelts, 10@30c, according to wool. Beef 2 1/2@4c gross. Mutton—\$2.00 per head. Hogs—6@7c, dressed. Lard—Kegs; or 5 gallon tins, 10c; pails 12c.

When Baby was sick, We gave her Castoria. When she was a Child, She cried for Castoria. When she became Miss, She clung to Castoria. When she had Children, She gave them Castoria.

Children Cry for Pitcher's Castoria

AT COST!

BOOTS AND SHOES. Brownell & Stanard have still a goods assortment to select from, and among them have: Ladies best quality Rochester made Fr. kid button, \$4.50; regular price, \$5.50. Extra quality Fr. kid button, \$3.50; regular price, \$4.50. Good Fr. kid button, \$2.50; regular price, \$3.50. Bright Gondola button, best quality, \$2.75; regular price, \$3.50. Bright Gondola button, good style \$2.50; regular price, \$3.00. American kid, button, best quality, \$2.00; regular price, \$2.50. A good assortment of Children's and Misses' all grain school shoes from \$1 to \$1.25; regular price \$1.35 to \$1.60. Ladies rubbers 30 and 40. Men's rubbers 30 and 40. Come before we are closed out. BROWNELL & STANARD.

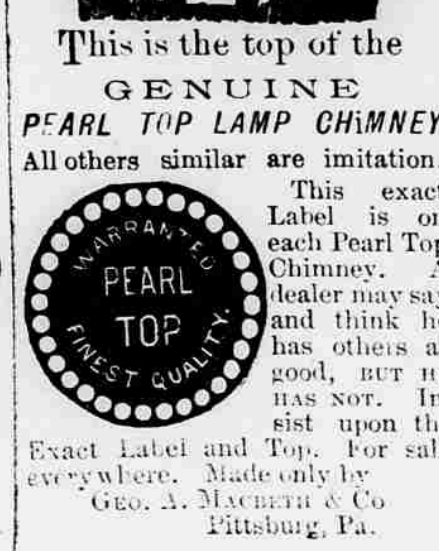
Yaquina Route!

OREGON PACIFIC RAILROAD. Oregon Development Co.'s Steamship Line. 22 1/2 MILES SHORTER AND 22 Hours Less Time Than by any other route. First-class through passenger and freight from Portland and all points in the Willamette Valley to and from San Francisco. Accommodations unsurpassed for comfort and safety. Fare and freight via Yaquina and the Oregon Development Company's steamship, much less than by any other route between all points in the Willamette Valley and San Francisco.

Table with columns for destinations (Willamette Valley, Yaquina, etc.) and sailing dates. Includes 'FROM SAN FRANCISCO' and 'FROM YAQUINA' sections.

WILLAMETTE RIVER LINE OF STEAMERS. The Wm. M. Hoag, the N. S. Bentley and the Three Sisters are in service for both passenger and freight traffic between Corvallis and Portland and intermediate points, leaving company's wharf, Corvallis, and Messrs. Hulman & Co.'s wharf, Nos. 200 and 202 Front St., Portland, three times each week as follows:

NORTH BOUND. Lv Corvallis Mon., Wed. and Fri. 8:00 am. Lv Albany Mon., Wed. and Fri. 9:30 am. Lv Salem Mon., Thurs. and Sat. 6:30 pm. Lv Portland Tues., Thurs. and Sat. 3:30 pm. SOUTH BOUND. Lv Portland Mon., Wed. and Fri. 6:00 am. Lv Salem Mon., Wed. and Fri. 7:15 pm. Lv Albany Tues., Thurs. and Sat. 1:30 pm. Lv Corvallis Tues., Thurs. and Sat. 3:30 pm.



What is CASTORIA

Castoria is Dr. J. C. Pitcher's old, harmless and quick cure for Infants and Children's Complaints. Superior to Castor Oil, Paregoric or Narcotic Sympa. Children cry for Castoria. Mothers of Mothers bless Castoria. Castoria cures Colds, Constipation, Sour Stomach, Diarrhea, Eructation; Gives healthy sleep; also aids digestion; Without narcotic ingredients. "I recommend Castoria for children's complaints, as superior to any prescription known to me." H. A. ARCHER, M.D., 111 So. Oxford St., Brooklyn, N.Y. THE CHEVREUX COMPANY, 77 Murray St., New York.

AGRICULTURAL DEPOT DEYOE & ROBSON, PROPRIETORS ALBANY, OREGON.

Have removed into their new building, and have on hand for the trade of 1888—A FULL LINE OF—GARDENER'S AND CARPENTER'S TOOLS, The largest and best variety of—STUDEBAKER AND NEWTON FARM WAGONS, HACKS AND BUGGIES. In the central Willamette Valley. Orders from a distance solicited and promptly filled at lowest rates.

JULIUS JOSEPH Manufacturer of Choice Cigars FINE IMPORTED AND KEY WEST CALIFORNIA AND TROPICAL FRUITS.

The City Liquor Store, M. BAUMGART, Proprietor. Next door to Burkhardt & Kenney's Real Estate Office, Albany, Oregon. Keeps constantly on hand the finest imported and domestic wines, liquors, cigars, etc. Only first-class liquor store in the city. SPECIAL ATTENTION PAID TO ORDERS FROM THE COUNTRY!

STEWART & SOX. Dealers in General Hardware AND Agricultural Implements.

Iron, Steel and Coal Wagons and Buggies. Carpenters' Tools Builders' Hardware Powder, Shot, etc. Rope and Cordage Blacksmiths' Supplies. Garden and Grass Seeds. And all Implements Used by Farmers!

Illinois Furniture House. H. OS. BRINK.

Best Line of Furniture In the City of Albany! Fancy Wicker Chairs Lounges, Parlor Cornice Poles Mirrors Feather Pillows Spring Mattresses, Window Shades Walnut Extension Tables Suits.

And what you can't find at other houses, I have it. In fact everything that is kept in a first-class house. Ash, Maple and Walnut Chamber sets, Chairs, Spring Beds, Lounges, Etc., at Prices that CANNOT BE UNDERSOLD. OREGON



Children Cry for Pitcher's Castoria.

Children Cry for Pitcher's Castoria

Seven Oaks is let and goes to the spot. It cures neuralgia, toothache, chills, etc. Wigwam slippers at Read's.

Linn County Bank

Cowan, Kalston & Co. SECURITIES TO COWAN & CUSICK Albany, Oregon. Transacts a general banking business. Draw sight drafts on New York, San Francisco and Portland, Or. Loan money on approved security. Receive deposits subject to check. Collections entrusted to us if we receive prompt attention.

Farmers & Merchants' INSURANCE COMPANY

ALBANY, OREGON. Capital Stock 500,000. PAID UP CAPITAL \$55,000. OFFICERS. President—Charles E. Wolverton. Vice-President—J. O. Writsman. Treasurer—J. W. Cusick. Secretary—J. K. Elderkin. DIRECTORS. R. S. Strahan, Chas. E. Wolverton, J. L. Cowan, D. B. Monteith, J. W. Cusick, J. O. Writsman, J. K. Elderkin, Charles Monteith, G. F. Simpson. Safe, Sound, Conservative. A Square Company, Managed by Square Men, Patronized by Square People. Recognize Home Enterprise.

H. F. MERRILL, Banker

ALBANY, OREGON. Sells exchange on New York, San Francisco and Portland. Buy notes, state, county and city warrants. Receive deposits subject to check. Interest allowed on time deposits. Collections receive prompt attention. Correspondence solicited. Office hours from 8 A. M. to 5 P. M. Agent for reliable fire and marine insurance companies.

Oregon Views, THE PHOTOGRAPHERS

ALBANY, OREGON. CARRY THE FINEST LINE OF OREGON Views in the West. Catalogue sent on application. We have also all the negatives of A. B. Paxton and J. G. Crawford, and any one can have duplicates from them at reduced prices.

Overland to California

SOUTHERN PACIFIC COMPANY'S LINES. THE MOUNT SHASTA ROUTE. California express trains run daily between Albany and San Francisco. Through time, 35 HOURS 35. 4:00 p.m. Lv. Albany. Ar. 10:40 a.m. 8:35 p.m. Lv. Albany. Ar. 11:30 a.m. 7:45 a.m. Ar. S. Francisco. Lv. 8:30 p.m. Local Pass. Trains Daily Ex. Sunday. 8:00 a.m. Lv. Albany. Ar. 3:45 p.m. 12:40 p.m. Lv. Albany. Ar. 7:00 a.m. 2:40 p.m. Ar. Eugene. Lv. 9:00 a.m. Lebanon Branch. 8:30 p.m. Lv. Albany. Ar. 6:30 a.m. 8:50 p.m. Ar. Lebanon. Lv. 5:45 a.m. 12:50 p.m. Lv. Albany. Ar. 2:45 p.m. 1:30 p.m. Ar. Lebanon. Lv. 2:00 p.m. PULLMAN BUFFET SLEEPERS. TOURIST SLEEPING CARS. For accommodation of second-class passengers attached to express trains. The O. & C. B. Ferry makes connection with all the regular trains on the east side of view from foot of F street. West Side Division. Between Portland and Corvallis. Mail Train Daily—Except Sunday. 7:30 a.m. Lv. Portland. Ar. 6:30 p.m. 12:25 p.m. Ar. Corvallis. Lv. 1:30 p.m. Express Train Daily—Except Sunday. 4:50 p.m. Lv. Portland. Ar. 9:00 a.m. 8:00 p.m. Ar. McMinnville. Lv. 5:45 a.m. At Albany and Corvallis connect with trains of Oregon Pacific railroad. For full information regarding rates, maps, etc., call on company's agent. R. ROEHLER, E. P. ROGERS, Manager. Asst. G. F. & P. A.

THE FIRST NATIONAL BANK OF ALBANY, OREGON

PRESIDENT—L. Flinn. VICE-PRESIDENT—S. E. Young, CASHIER—G. E. Chamberlain. TRANSACTS A GENERAL BANKING BUSINESS. Accounts kept subject to check. Sight Exchange and Telegraphic Transfer sold on New York, Chicago, San Francisco and Portland, Oregon. Collections made on favorable terms. DIRECTORS: S. E. Young, L. Flinn, W. E. Turrell, L. E. Blain, Geo. E. Chamberlain, Jas. F. Powell, Assistant Cashier. For Sale. 20 SMALL TRACTS AND THREE FARMS (each 1/2 section, 800 to 1000 acres) H. BRYANT

JULIUS GRADWOHL'S

Golden Rule Bazaar! He has enlarged his stock equal to any on the Coast, consisting of PORCELAIN AND English & American DECORATED WARE. Roover Bros' Silverware, French, China and Crystalware. Lamps and Lamp Trimmings. Boys' Wagons and Doll Carriages. Fancy Goods and a General Assortment of Holiday Goods and TOYS. SAVE YOUR MONEY

By buying your goods from my store. I am buying direct from the factory and sell at Eastern prices with freight added, 10c cash. Kenton's Baking Powde ---One Pound Can. 25c

I am agent for ten responsible Fire and Marine Insurance companies, representing \$72,000,000. Insure and protect yourself before it is too late. I am also agent for the Frank Bros. Implement Co., Portland. Ici on parle Francais. Hier wird deutsch gesprochen.

MIND YOUR EYE

GO AND SEE

L. E. BLAINS

NEW STOCK OF CLOTHING.

AT COST! STILL TO THE FRONT!

G. W. SIMPSON.

Having purchased the stock of Clothing, Gents' Furnishing Goods, Boots, Shoes, Etc., of C. E. Roland & Co. is now prepared to offer Better Bargains than Ever! Having a complete assortment of General Merchandise, bought at a big discount, which he still proposes to sell at cost. Purchasers will do well to call and get his prices before buying elsewhere, as you can save from 25 to 30 per cent. The highest market price paid for country produce of all kinds, either in cash or goods. Children Cry for Pitcher's Castoria.