

Figures Don't Lie

THOMPSON & WATERS

Will sell you dr. and fancy goods, Yankee notions, etc., etc., cheaper than any other house in Linn county, because they buy in large quantities direct from the East.

THOMPSON & WATERS

Will sell you better and cheaper clothing than any firm in Linn county, for the reason that we buy direct from Eastern manufacturers, thereby saving our customers drammers' and jobbers' profits.

Will sell you boots and shoes cheaper than any establishment in Linn county, from the fact that we buy our goods direct from Eastern factories. Remember we carry a full stock of the celebrated C. M. Henderson's Red School House shoes.

THOMPSON & WATERS

Will sell you everything in the grocery line cheaper than any firm in Linn county, because we buy strictly for cash.

THOMPSON & WATERS

Will sell you your wallpapers, paints, oils, lead and glass cheaper than any other house in Linn county, because we buy in large quantities for spot cash.

THOMPSON & WATERS

Can sell every article in their immense stock cheaper than any house in Linn county, for the very reason that they sell strictly for cash, produce or note, thereby making no poor bills or accounts, doing away entirely with the old rotten, long-winded credit system, whereby the customer is compelled to pay from 15 to 20 per cent more for his goods than under the cash or pay as you go system. We guarantee to save our customers the above per cent. Come and see and be convinced. We can save you money by dealing with us.

Highest market price paid for all produce.

THOMPSON & WATERS

Brownsville, Or., April 13.

FORTMILLER & CO. HAVE SOMETHING IMPORTANT TO SAY TO THEIR CUSTOMERS. THEY HAVE

Just Opened

Oil Paintings IN RICH GOLD FRAMES.

Wall Paper

FINE FURNITURE

Upholstered Goods. PALACE MEAT MARKET

JAMES V. PIPE, Prop. FRESH OYSTERS EVERY DAY AT HOFFMAN & PFEIFFER'S.

MRS. EMMA O'CONNOR Fine Millinery

CROSSEN & ALLEN, PROPRIETORS OF Albany Truck and Dray COMPANY NO. 1

THE MARKETS.

ALBANY QUOTATIONS.

Wheat—62 Oats—36 1/2 Flour—\$5 per bbl. Potatoes—75c Eggs—1 1/2c Butter—2 1/2c Lard—20c Wool—22c Hides—10c Bacon—11c Hay—Timothy, \$20, oats and wheat, \$14. Apples—Green, \$1 1/2 per bu. Plums—Dried, 90c per bu. Apples dried—bleached 9c sundried 8c. Chickens—\$3.50 per 50 Hides—Butt hides, green, 5c, dried 10c; deer skins, 20c; sheep pelts, 10c; according to wool. Beef—3 1/2c gross. Mutton—\$2.50 per head. Hams—10c. Lard—Kegs, or 5 gallon tins, 50c; tubs, 3c.

PORTLAND MARKETS.

Wheat—Quota valley \$1.18 1/2 25. Wain Wain, 1 1/2. Oats—Market dull. Flour—Valley standard, 50c; good at \$4.00, and Wain Wain brands \$3.50; 3 1/2, superfine \$2.50; 2 1/2 per barrel. Hops—Baled Timothy quoted at \$17 per ton. Feed—Bran, per ton, \$16.18; shorts \$18.20; chopped barley, \$21.25 per ton. Barley—Brewing, per cwt, \$1; ground per ton, \$2.75. Hops—Quota 60c per pound. Butter—Choice dairy, 30c; 50c, per lb; brine in rolls, 30c. Eggs—Fairly steady, 1 1/2c per dozen. Provisions—Bacon, 10c; ham, 12c; lard, 20c; shoulders, 60c. Wool—Plentiful. Valley, 19c; 20c. Eastern Oregon, 18c. Meat—Steak, Beef, wholesale, 40c; 1 1/2c per lb; dressed, 7c; hogs, dressed, 60c; veal, 70c. Potatoes—Market heavy. Per cwt, 75c; 80c. Burbanks favorite.

If you buy goods of us to the amount of \$1.00 don't forget to call for a ticket which will entitle you to 5 cents in goods at our store. Brownell & Standard.

Ayer's Sarsaparilla was the first successful blood medicine ever offered to the public. This preparation is still held in the highest public estimation both at home and abroad. Its miraculous cures and immense sales show this. Ask your druggist for it.

The best way to save money is by patronizing the new firm of Brownell & Standard. We welcome all our old friends as well as new, and always strive by fair dealing to give the lowest prices and best goods, and are ever on the alert to please customers. BROWNELL & STANDARD.

Thos. Brink has just received an elegant assortment of window shades and cornish poles.

Baled hay for sale cheap. Inquire of H. F. Merrill.

OR SHORT LINE & UNION PACIFIC.

Shortest and best route to all points east and south. Pullman Palace cars. Regularly sleeping cars. Through from Portland to Council Bluffs and Kansas City without change. These cars are free of charge. For further particulars regarding rates, etc., inquire of Oregon & Portland, agents, Albany, Oregon.

THE Yaquna Route!

OREGON PACIFIC RAILROAD. Oregon Development Co.'s Steamship Line.

225 MILES SHORTER

22 Hours Less Time. Than by any other route.

First class, heavy passenger and freight from Astoria and all points in the Willamette Valley to and from San Francisco.

Willamette River Line of Steamers. The Wm. M. Hunt, the S. S. Bennett and the Three Sisters are in service for both passenger and freight traffic between Corvallis and Portland and intermediate points, leaving the company's wharf, Corvallis, and Meigs, Holman & Co.'s wharf, Nov. 20 and 202 Front St., Portland, three times each week as follows:

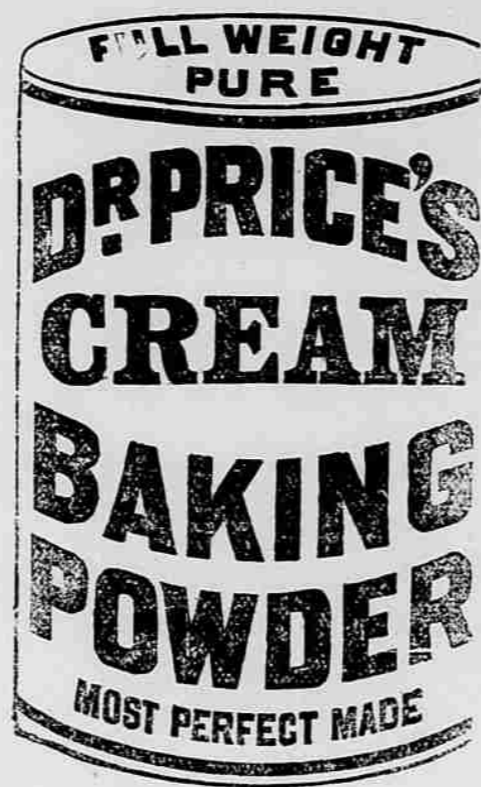
SOUTH BOUND. To Corvallis Mon, Wed, and Fri., 10:00 am. To Albany Mon, Wed, and Fri., 11:20 am. To Portland Tues, Thurs, and Sat., 5:30 pm. NORTH BOUND. To Portland Mon, Wed, and Fri., 6:00 am. To Corvallis Tues, Thurs, and Sat., 4:20 pm. Accommodations unsurpassed for comfort and safety. Rates and freights via Yaquna and the Oregon Development Company's steamship line, in accordance with any other route to Union all points in the Willamette Valley and San Francisco.

SAILING DATES. FROM SAN FRANCISCO. Willamette Valley, April 20th. Corvallis, May 1st. Albany, May 14th. Portland, May 27th. Willamette Valley, May 1st. FROM YAQUINA. Willamette Valley, May 20th. Corvallis, May 27th. Albany, May 30th. Portland, June 10th. The company reserve the right to change steamer or sailing dates. S. B. Tom, Gen'l & P. Agent, 394 Montgomery Street, San Francisco, Cal. DAILY PASSENGER TRAINS (Except Sundays).

LY YAQUINA 6:30 A. M. To Albany 7:50 P. M. To Corvallis 9:15 P. M. To Portland 10:45 P. M. ALBANY 11:15 A. M. To Yaquina 6:50 P. M. O. & C. trains connect at Albany and Corvallis. S. M. Hoag, General Manager, Astoria, G. F. & P. Agent, Corvallis, Oregon.

A BOND & SON, Dealers in General Merchandise

General Merchandise



Is superior excellence proven in millions of homes for more than a century. It is used by the United States government. Endorsed by the heads of the great universities as the strongest, purest, and most healthful. Dr. Price's Cream Baking Powder does not contain Ammonia, Lime or Alum. Sold only in cans. PRICE BAKING POWDER NEW YORK CHICAGO

Illinois Furniture House! THOS. BRINK.

Best Line of Furniture in the City of Albany! Fancy Wicker Chairs Lounges Parlor Cornice Poles Mirrors Feather Pillows Spring Mattresses. Window Shades Walnut Extension Tables Suits.

And what you can't find at other houses, I have it. In fact everything that is kept in a first-class house.

Ash, Maple and Walnut Chamber sets, Chairs, Spring Beds, Lounges Etc., Etc., at Prices that CANNOT BE UNDERSOLD.

ALBANY OREGON

STEWART & SOX

Dealers in

General Hardware

Agricultural Implements.

Iron, Steel and Coal Wagons and Buggies. Carpenters' Tools Builders' Hardware Powder, Shot, etc. Giant Powder & Fuse Saws and Axes.

Rope and Cordage Blacksmiths' Supplies. Garden and Grass Seeds

AGRICULTURAL DEPOT DEYOE & ROBSON, PROPRIETORS

ALBANY, OREGON. Have now available to their new building and expansion fund for the trade of 1888. A FULL LINE OF GARDENER'S AND CARPENTER'S TOOLS. The largest and best variety of

STUDEBAKER AND NEWTON FARM WAGONS, HACKS AND BUGGIES.

In the central Willamette Valley. Orders from a distance solicited, and promptly filled at lowest rates.

And all Implements Used by Farmers!

WILL BROS

Dealers in all the leading Guns, Pistols, Sewing Machines, Organs, Pianos, NEEDLES, MACHIN OILS and EXTENS.

ALBANY COUNTY AGENTS FOR NORTHWESTERN FIRE INSURANCE COMPANY. Leading of sewing machines, musical instruments, guns, etc., neatly done.

Linn County Bank

Cowan, Raiston & Co., SUCCESSIONS TO COWAN & CUSICK Albany, Oregon

Transacts a general banking business. Draw sight orders on New York, San Francisco and London. Loan money on approved security. Receive deposits subject to check. Collections entrusted to us. Interest free on deposits.

Farmers & Merchants' INSURANCE COMPANY

ALBANY OREGON Capital Stock 300,000 PAID UP CAPITAL \$55,000.00

OFFICERS. President—Charles E. Wolverton. Vice-President—J. O. Writman. Treasurer—J. W. Cusick. Secretary—J. K. Elderkin.

DIRECTOR. J. L. Cowan, Chas. E. Wolverton, J. L. Cowan, D. B. Monteith, J. W. Cusick, J. O. Writman, J. K. Elderkin, Chas. E. Monteith, G. F. Simpson.

Safe, Sound, Conservative

Safe, Sound, Conservative

W. F. MERRILL, Banker

ALBANY OREGON

Safe, Sound, Conservative

Overland to California

THE MOUNT SHASTA ROUTE

Local Pass. Trains Daily—Ex. Sunday

At Albany and Corvallis connect with trains of Oregon Pacific railroad.

West Side Division. Between Portland and Corvallis.

Mail Trains Daily—Except Sunday.

Express Train Daily—Except Sunday.

At Albany and Corvallis connect with trains of Oregon Pacific railroad.

At Albany and Corvallis connect with trains of Oregon Pacific railroad.

At Albany and Corvallis connect with trains of Oregon Pacific railroad.

At Albany and Corvallis connect with trains of Oregon Pacific railroad.

At Albany and Corvallis connect with trains of Oregon Pacific railroad.

At Albany and Corvallis connect with trains of Oregon Pacific railroad.

At Albany and Corvallis connect with trains of Oregon Pacific railroad.

At Albany and Corvallis connect with trains of Oregon Pacific railroad.

At Albany and Corvallis connect with trains of Oregon Pacific railroad.

At Albany and Corvallis connect with trains of Oregon Pacific railroad.

At Albany and Corvallis connect with trains of Oregon Pacific railroad.

HATS FOR MEN AND BOYS AT BLAIN'S.

L. E. BLAIN'S

ALBANY OREGON

ALBANY OREGON

ALBANY OREGON

ALBANY OREGON

ALBANY OREGON

ALBANY OREGON

ALBANY OREGON

ALBANY OREGON

ALBANY OREGON

ALBANY OREGON

ALBANY OREGON

ALBANY OREGON

ALBANY OREGON

ALBANY OREGON

ALBANY OREGON

ALBANY OREGON

ALBANY OREGON

ALBANY OREGON

ALBANY OREGON

ALBANY OREGON

ALBANY OREGON

ALBANY OREGON

Wm. Fortmiller & Co. FUNERAL DIRECTORS

PROMPT ATTENTION. MOST CLASS REARSE

JOHN SCHWABER'S Livery, Feed & Sale Stable.

Corner Second and Ellsworth Sts. ALBANY, OREGON

Houses repaired by the day or month. Carriage or light or reasonable terms.

Oregon Views, J. G. CRAWFORD, THE PHOTOGRAPHER.

ALBANY OREGON

ALBANY OREGON

ALBANY OREGON

ALBANY OREGON

ALBANY OREGON

ALBANY OREGON

ALBANY OREGON

ALBANY OREGON

ALBANY OREGON

ALBANY OREGON

ALBANY OREGON

ALBANY OREGON

ALBANY OREGON

ALBANY OREGON

ALBANY OREGON

ALBANY OREGON

ALBANY OREGON

ALBANY OREGON

ALBANY OREGON

ALBANY OREGON

ALBANY OREGON

ALBANY OREGON

ALBANY OREGON

ALBANY OREGON

ALBANY OREGON

ALBANY OREGON