

LATEST DISPATCHES

Fearful Railroad Accident in Pennsylvania.

FIVE PERSONS INSTANTLY KILLED.

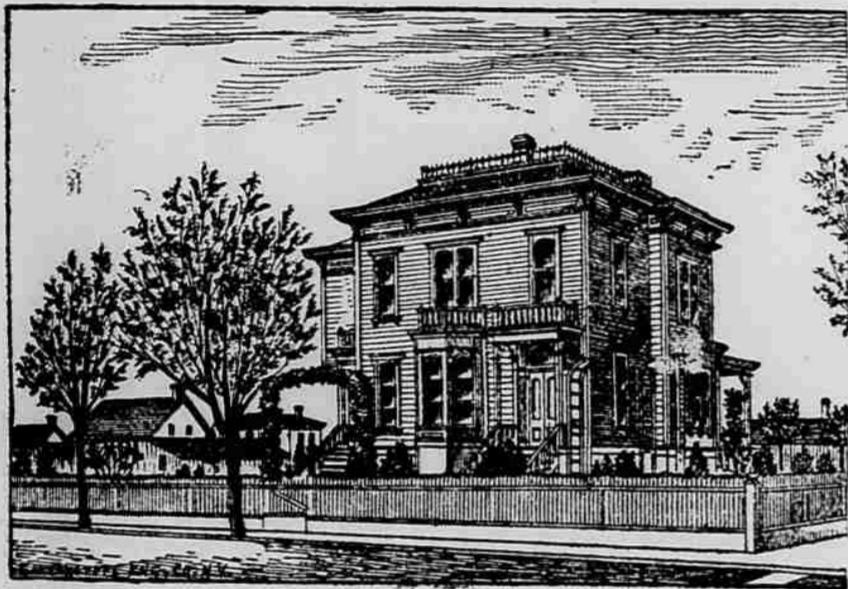
Police Interrupt the Game—Vatican Authorities are Perplexed—Men Will Strike—Irish Sympathy.

The Herald's Special Dispatches.
MEADVILLE, Pa., Dec. 31.—The first Chicago express on the New York, Pennsylvania & Ohio railroad, consisting of two sleepers and five coaches, collided with a freight train consisting of two engines and sixty cars, three miles west of this city this morning. Five persons were killed outright, among whom was a passenger. Thirteen others were wounded. Following are the names of the killed as near as can be ascertained: William George, engineer, and his fireman, of the leading freight engine, E. P. Swan and Arthur Irwin, engineer and fireman of the Chicago express. Both trains present a terrible scene of destruction. A fast express is making up lost time. Blame is laid to rest with the engineer and conductor of the freight train, who were running on express time.

ANOTHER PRIZE BATTERING.

Police Swoop Down and Spoil the Beauty.

PITTSBURG, Dec. 31.—The prize fight between Joe Ridge and Wm. Kelley for the feather weight championship was arranged to come off this morning near Latrobe, forty miles east of Pittsburgh. The ground had been staked off and the men were on the ground ready to go to work when the officers appeared and forbade the fight. The contest was postponed, but will probably take place to-night or early to-morrow morning.



J. L. COWAN'S RESIDENCE.

IRISH NATIONAL LEAGUE.

Send Resolutions of Condolence to Mrs. H. W. Beecher.

New York, Dec. 31.—The New York municipal council of the Irish National League intend soon to present to Mrs. Henry Ward Beecher a set of resolutions expressing sympathy and respect of society for the death of her husband and its respect for his memory. These resolutions were drawn up on heavy parchment and fastened in form banner upon a stick of dark colored wood, either end being mounted with knobs of brass.

Extensive Strike.

PHILADELPHIA, Dec. 31.—Nearly 1000 men employed in and around the extensive freight depot of the Reading Railway Company, at the Willow street wharf, went out on a strike this morning.

CHERRY & PARKS.

A View of Their Iron Works in This City.

The accompanying illustration shows the building of the well



CHERRY & PARKS' IRON WORKS.

known Albany Iron Works of Messrs. Cherry & Parks. Of this firm little need be said in its praise. They have during the summer just passed shipped building fronts to all parts of the Northwest, and keep a large force of workmen continually at work. They manufacture saw-mills, engines and every variety of intricate machinery. Their establishment is one of the chief manufacturing enterprises of Albany.

AN ENTERPRISING ARTIST.

A New Photograph Gallery to be Erected by L. W. Clark.

Mr. L. W. Clark who has been located in this city for a year or more, has found the demand for his photos increasing to such an extent that he has purchased property of S. E. Young, on the corner of Second and Ferry street and will erect upon the same, early this year, a new photograph gallery. Of his pictures it is praise enough to say that they com-

pare favorably with the photos of the best metropolitan artists in the country, and that his work is constantly being in demand.

LAND FOR SALE.

Below will be found a few sample bargains offered for sale by the real estate firm of Burkhardt & Keeney, Albany, Oregon.

260 acres 4 miles from Crawford's mill, 40 acres in cultivation, the balance is brush and timber easily cleared, good buildings, good soil, 130 acres fenced. Price, \$1800, one-half cash.

160 acres 8 miles from Albany, 50 acres in cultivation, the balance is brush and timber, good buildings and all fenced. This is fine river bottom land. Price, \$3300.

1500 acres of fine stock land in one tract, situated in this county, all fenced with over 8 miles of good fence, three fair houses, one good barn that costs \$700, with other improvements; a good orchard of five acres, plenty of living water on the place, 80 acres in cultivation, some fine timber on this place, easy terms. Price, \$4 per acre.

800 acres 7 miles from a nice R. R. town, about 60 acres in cultivation, 120 tillable not in cultivation, balance rolling and partly covered with small fir and oak timber, medium good buildings and orchard, 600 acres fenced and cross fenced; place well watered with several fine springs. This is a good stock ranch. Price, \$4400, 1/2 or 1/3 cash.

103 acres 1/2 mile from a nice little town with stores, shops, factories, churches and good school. Also as good water power facilities as can be found; about 70 acres tillable, balance pasture and some timber; good house of 6 rooms, fair barn, small orchard; living water on the place. This is a fine tract of land and is a bargain. Price, \$1800, 1/2 or 1/3 cash.

408 acres near Lebanon, 140 in cultivation, balance pasture and part timber; good frame house of 4 rooms, large barn, good living water. This is a good stock or dairy farm. Price, \$15 per acre, or \$6120.

320 acres in a good location, in Lebanon vicinity, 130 acres in cultivation, 130 acres in grass that could be easily cultivated if required, about 40 acres of oak and fir timber, box house of 5 rooms, a good frame barn and other necessary outbuildings. An orchard of 10 acres in fine bearing

condition, besides many varieties of grapes and berries. Place well fenced and watered with living springs. Good school within one mile. This is a great bargain for one wanting a home of this description.

1000 acres 8 miles from Albany and 11 miles from a R. R. station, good house and large barn, ranch all well fenced with mostly new fencing, about 80 acres in cultivation, balance good pasture land rolling with some timber and large orchard; place well watered with springs, good school 1 1/2 miles. This is a fine stock ranch and is a bargain. Price, \$10 per acre on easy terms.

We have a large list of grain and stock lands for sale of which the above is a sample. Write to us for a complete list of lands for sale. No charges for showing any lands for sale by us. Address Burkhardt & Keeney, Albany, Oregon.

Shane & Lonsday.

This firm started business last spring in Froman's brick, and after a very successful summer's trade secured the entire two-story brick building in the business centre so

long occupied by Fox, Baum & Co. Their business embraces a well assorted stock of staple and fancy dry goods, ladies' and gents' furnishing goods, millinery, ladies' gents' and childrens boots and shoes, etc. They carry no groceries, hence the stock in the above branches represent a much larger and better assortment than can be found in those stores largely occupied with groceries, crockery, etc. Their object being to carry a well assorted stock in all branches of their business, and deal exclusively in first-class goods. The peculiarity of their manner of doing business is, their store is on a strictly cash basis, and in consideration of losing nothing by bad debts they expect to sell goods on a margin of about one-half usually needed to do a credit business.

Magnolia Flour.
THE BEST MAGNOLIA FLOUR DELIVERED TO ANY PART OF THE CITY, FOR \$1.10 PER SACK.
 JOHN A. CRAWFORD.

On The Threshold

—OF A—
NEW YEAR.

We pause in the midst of our commercial rush, and not without good reason heartily thank

OUR PATRONS

For, and congratulate ourselves on, the great strides made and the

MANY TRIUMPHS

Achieved during the past year. We point with pride to our

COLOSSAL ESTABLISHMENT,

On the corner of First and Broadbald streets, which has now become the recognized

EMPORIUM

For all that is select and admirable in the production of both European and American looms in staple dry goods, fine dress goods and silks, and the indispensable

POLYTECHNIC

For the outpourings of the concentrated genius of foreign and home inventors of fine art fancy goods, and the

COLLOSEUM

That bridges the chasm which timid speculators are fearful of crossing, laying at the feet of the mountaintops of Albany and surrounding country

THE WORLD'S SELECTIONS

In everything that pertains to dry and fancy goods, cloaks, boots, shoes and all the accessories. As it behooves a firm which has reared its head above all competition, we never ridicule the feeble attempts at rivalry from our neighbors, and since our position is so

DECIDEDLY ADVANTAGEOUS

It were doubly unworthy of us to do so. The secret of our advantage, besides a keen apprehension of the values of goods and being constantly on the qui vive for the latest developments of taste and fashion, lies in the fact that we are the proprietors of that immense establishment,

THE WHITE HOUSE,

At Spokane Falls, along with our Albany house, which compels us to buy our goods in enormous quantities, and the consideration that we always pay spot cash secures us our goods far

BELOW ORDINARY PRICES.

And makes our custom courted by the leading wholesale houses. For the approaching spring trade our program is already filled, and in view of the very satisfactory and increasing demand for fine dry goods in Albany, the proud metropolis of the valley, we intend to outshine if possible our former efforts and offer

NOVELTIES

Which shall surprise both the consumer and the trade in the whole Northwest, and place our prices in a position to gladden our patrons and paralyze all attempts at competition. Persons desiring to convince themselves of the foregoing are cordially invited to pay a visit to our establishment, where the splendor of

WEALTH AND MAGNIFICENCE

Will of themselves hurry conviction, and should they desire to purchase with cash or to open an account, they shall find advantages to which they were before now strangers. To our patrons, and to the public generally, we wish a prosperous

LEAP YEAR.

MONTEITH & SEITENBACH.

FOR A FULL

Line of Superior Stoves and Ranges!

— SEE —

McFarland & Irving.

Fine Table Delicacies!

Willamette Packing Company's Grocery Store

—For You—

PATRONIZE HOME INDUSTRY



W. M. French,
 Corner Jewelry Store

Keeps a full stock of watches, clocks, silverware, optical goods, etc.

REPAIRING A SPECIALTY.

1887 CHRISTMAS NEW YEARS 1888.

CHRISTMAS

—IS—

PAST

—BUT—

FOSHAY & MASON

Are still selling an immense variety of Holiday Goods. All are invited to call and

LOOK THROUGH OUR STOCK!

We always take pleasure in showing our goods whether you wish to purchase or not.

DR. G. W. GRAY,
SURGEON DENTIST,



ALBANY, OREGON.

E. L. THOMPSON

—THE—

LEADING HARNESS MAKER

THE LARGEST STOCK

In the Willamette Valley south of Portland Prices the lowest, goods the best. Winter robes and horse blankets, sleigh bells, harness, oils and soaps. All styles of saddles. Heavy team and buggy harness. Buggy whips at eastern prices. Repairing a specialty. All to be found at E. L. Thompson's, Albany, Oregon.