

PEOPLE OF THE DAY

Turkish Military Leader.

General Mohammed Schefket Pasha, commander of the Turkish Constitutional forces, looms large in the affairs of the Ottoman empire. Since the downfall of Abdul Hamid II, there has been a growing notion that Schefket is virtually dictator, a feeling, however, that he has attempted to dispel. Speaking on this subject recently, he said:

"The army is merely an instrument of civil power. The army and I as an officer in it derive our authority to establish order from the national assembly. The army is a finger of parliament only and works under the will of the cabinet."

Schefket Pasha is a tall, wide shouldered, thin Arab of Bagdad, with some Georgian blood. He has been described as a man of extreme composure. "Some of the members of the committee," said Rauf Bey, one of the three who represented the Young Turk committee in the navy, "before the advance on Constantinople doubted whether Schefket Pasha was the man for the work ahead. He was so



MUHAMMED SCHEFKET PASHA.

still, so tranquil, so silent! But what a man he is! What energy, what intellect, what disinterested motives! To him the cause is everything; he thinks nothing of himself."

The skill and celerity with which he brought the Third army corps and part of the Second army corps before Constantinople and occupied the capital amazed the foreign military men at Constantinople. Besides those attached to the embassies, seven officers went from Germany and five British officers from Egypt to observe the development of the campaign. They are unanimous in praise of his military skill.

Schefket Pasha is forty-nine years of age, eleven of which he spent in Europe. He received his military training in Germany and had made a record as general of infantry and member of the general staff under the old regime.

Murphy of Missouri.

Congressman Arthur Phillips Murphy of Missouri, who recently offered a resolution in the house of representatives asking an inquiry into the official conduct of two federal judges, is just beginning his second term as a national legislator. The judges involved are John F. Phillips of the western district of Missouri and Smith McPherson of the southern district of Iowa. Mr. Murphy's charges were based on their action in connection with Missouri's two-cent passenger rate law and the maximum freight law.

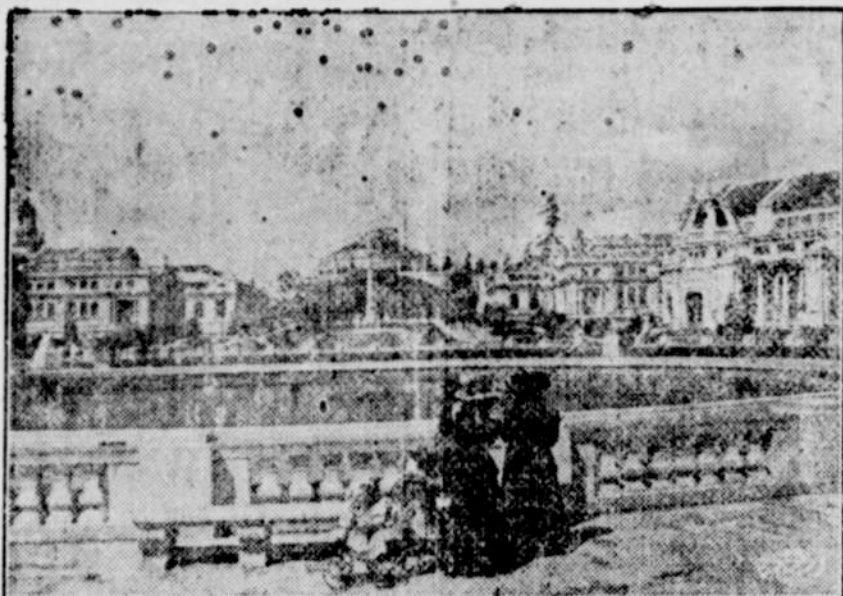
Arthur Phillips Murphy, or "Pat" Murphy, as he is known in his home town, Rolla, Phelps county, Mo., went to Washington four years ago as a representative in congress and soon became known as "Homespun" Murphy, from a nut brown, rough suit of clothes he wore. Since then he has developed into one of the high lights of the house and has won fame as a champion of the laboring man. He was a candidate for re-election to the Sixtieth congress, but his Democratic



ARTHUR PHILLIPS MURPHY.

opponent beat him to the wire. Mr. Murphy, however, didn't lose his grip on the Republican organization, and last year he was again a candidate for congress. Speaker Cannon on his swing around the circle made a few speeches for his friend, and "Homespun" was victorious at the polls.

Congressman Murphy is a native of Missouri, thirty-nine years of age and is a lawyer by profession.



A VIEW OF THE COURT OF HONOR, A.-Y.-P. EXPOSITION, SEATTLE.

All of the principal buildings of the Alaska-Yukon-Pacific Exposition are grouped in close compass around the Cascades and Geyser Basin and the flower beds which line each.

The picture shows a view from the lower side of Geyser Basin, directly up the Court of Honor. On the right are seen the Palace of Manufactures, the Oriental and Hawaiian Buildings. On the left are the European Exhibits and Alaskan Buildings. In the far center is the Central Government, which shows its incomplete front as it looked on April 15. On that date this was the heaviest piece of construction to be finished before the opening day of the Exposition and the contractors estimated that it would take them ten days to do the work.

Geyser Basin is in the foreground, and just beyond it show the steps in the Cascades.

A BEAUTY HINT.

How to Improve the Sallow Skin Without Medication.

The lucky possessor of a peach and cream complexion need not bother her head about what she wears or when she eats, but the girl of orange has must consider both dress and diet if she would not resemble an exhausted nunny or a lump of sodium.

The sallow girl should look to her liver rather than to powder for lightening her complexion. A half lemon in a glass of water morning and evening and several quarts of plain water between will pale the cheeks better than the rouge pot.

Coffee must be cut off the sallow girl's list; so also should strong tea and too much chocolate. Rich foods, too many sweets and, above all, hot breads should be shunned.

Fruit in season and out is the boon of the yellow head. Sift on everything else before you cut down your allowance of oranges and apples from the daily menu. The only possible exception in the fruit line is seedly berries, which are often too acid and clog the intestines. Quite as important as diet is becoming dress. Some girls with a skin like a clay bank persist in wearing ecru, purples and greens.

Reds can generally be worn by the sallow girl, most shades of blue and, above all, a soft rose pink. The fancy for brown which is prevalent with sallow women, while a better choice than ecru, does not give enough contrast unless high lights are there in whites.

White never fails to be becoming, as it seems to clear up the muddiest skin. It must be pure white, however, without a tinge of cream.

The woman with olive complexion will find the narrow line of black velvet ribbon that is now worn with evening gowns a positive boon. The black well up against the face—the band should be worn high on the throat—tends to whiten and clear her skin and makes possible a frock of a bad color. Gold beads should be charily worn by the sallow girl. Certain tones of gold are hideously unbecoming, though the pale lemon tint is not out of the question.

One cannot lay down hard and fast rules as to color. To say blue is becoming does not mean Alice or porcelain tints, nor does the same shade of blue look well on every sallow person.

There is but one way to definitely know what can be worn. Test it in every light. Do not trust to your own judgment, but have with you an unbiased friend who is honest enough to say what she thinks.

Let no clever person tempt you by flattery into thinking you can wear with impunity colors that would try a milk and roses skin.

PROPER TREATMENT FOR DYSENTERY AND DIARRHOEA

The great mortality from dysentery and diarrhoea is due to a lack of proper treatment at the first stage of the disease. Chamberlain's Colic, Cholera and Diarrhoea Remedy is reliable and effectual medicine, and when given in reasonable time will prevent any dangerous consequences. It has been in use for many years and has always met with unvarying success. For sale by C. Y. Lowe.

Presbyterian Church

Services will be held at the Presbyterian Church, the first, second and third Sundays of each month at 11 a. m. and 8 p. m. Sunday School and Christian Endeavor at their usual hours. All are welcome. CEO. ROACH, pastor.

TWENTY FIVE CENTS IS THE PRICE OF PEACE

The terrible itching and smarting incident to certain skin diseases, is almost instantly allayed by applying Chamberlain's Salve. Price 25 cents. For sale by C. Y. Lowe.

NEEDLEWORK NOTES.

When doing fine hand work keep a saucer of cornstarch near by, occasionally dip the fingers into it and wipe them with a soft towel.

A great amount of crossbar goods are used in women's underwear. Being so durable, it is highly recommended. There are medium heavy kinds and one variety more dressy because of the sheer material. This is, strange to say, generally embroidered, although nightgowns are usually lace trimmed.

When sewing many women place a needle in the machine and use that one needle for all kinds of work with all kinds of thread, from No. 59 machine thread to the very finest. This makes an ugly stitch, often a thread loop from time to time. Always use a fine needle with thread used to tuck fine lingerie. The stitch is smoother, and the goods do not have the large holes made by an extra large needle.

Charming little booties of white kid are made for the baby and embroidered with the featherstitch in pink or blue silk. The patterns for the diminutive boots are the same as that used for the knitted slippers of older people. First the tiny sole is cut, then the upper. The one is sewed to the other, the seam is fastened at the heel, and the top is bound in ribbon. The feather or brier stitching is then put all around the seams and just below the ribbon binding, and baby's shoes are finished.

An excellent way of making children's bib aprons is by using the regular yoke patterns, cutting the back deep enough so that a narrow piece of the goods comes under the arm. Instead of the same depth yoke in front, cut the material as long as the child's dress, rounding the goods at the side if you prefer. Join the back yoke to the front piece, cut the sleeves and sew in. Face the yoke, neck and sides with bias strips of the material. Two buttons will be sufficient for the back. When finished you will have a bib that not only entirely covers the front of the child's dress, but also protects the sleeves.

CHAMBERLAIN'S COLIC CHOLERA AND DIARRHOEA REMEDY THE BEST AND SUREST

"It affords me great pleasure to state that I consider the preparation known as Chamberlain's Colic, Cholera and Diarrhoea Remedy the best and surest of good results of any I have ever used in my family," says P. E. Herrington, of Mount Aerial, Ky. This is the universal verdict of all who use this remedy. Its cures are so prompt and effectual that people take pleasure in recommending it. For sale by C. Y. Lowe.

He Dazed Lew Wallace.

Shortly after the first success of "Ben-Hur" Lew Wallace had occasion to go over to London and one day picked up a pirated copy of the novel at a railroad newsstand. To his amazement he found the subtitle left off, a preface interpolated and one of the chapters rewritten. Of course he boiled with rage, and as soon as possible he called on the publisher. That gentleman coolly admitted his crime and told Wallace he thought the amended form better adapted to the British taste, doncherknow. His gall was so stupendous that the novelist was awed and went away without spilling his gore.

HELP FOR THOSE WHO HAVE STOMACH TROUBLE

After doctoring for about twelve years for a bad stomach trouble and spending nearly five hundred dollars for medicine and doctors' fees, I purchased my wife one box of Chamberlain's Stomach and Liver Tablets, which did her so much good that she continued to use them and they have done her more good than all of the medicine I bought before.—SAMUEL BOYER, Folsom, Iowa. This medicine is for sale by C. Y. Lowe. Samples free.

Advertise in the RECORDER and you will get results.

MANNING THE STATIONS.

Discipline Aboard Ship at Sea in Times of Emergency.

At no time is the perfect organization aboard ship so well illustrated as in the time of an emergency. The slightest scent of danger in the wind must find every man ready. And every man is ready. Every man has a number. Every man has a station. A bell tap may send your dining room steward off at a run just when he is serving your soup. At the bell tap he is no longer your steward. He is "No. 78" in the ship's emergency organization, and when he gets to his station he finds Nos. 54, 45, 238, 117, 248 and some others there to act with him like a machine. Aboard a big ship there are sometimes as many as sixty stations about the vessel, and at the sound of an alarm bell thirty seconds have not elapsed before every man has responded to his number at his station and is ready to act, to fight fire, to man the lifeboats, or what not.

Up in the wheelhouse is further exemplification of what system will do. Within reach of the officers are a dozen contrivances of machinery that connect with every part of the ship. A touch of one lever closes a bulkhead in this or that compartment of the hold, a touch of another man's lifeboat so-and-so, and a lever there mans any one or all. Here is a telephone, its wires extending to every part of the ship, and an officer's voice carried to a distance station in the bowels of the ship so magnified by mechanical means that it can be heard twenty feet from the receiver and fairly bellows its orders.

A sailor or steward never knows at what minute, day or night, he may be called to his station. At the sound of the signal bell he must be at his post. There is a drill of some kind every day aboard ship, but the men never know whether they are running to a real fire or only a drill. Boats are uncovered, falls overhauled, davits swung out. Every boat must have its compass, night signals, fresh water and provisions ready for immediate action. From the chart room the captain can start a signal in the most remote part of the ship simply by pressing a button, and the flashing of tiny electric lights faithfully record how every detail of the drill is being carried out. A chart gives the location of all bulkheads, and a tiny light sparkles when this or that water tight compartment is closed. In case of a collision every bulkhead below the water line is closed by a turn of a lever in the wheelhouse, making the modern ship practically unsinkable.—Van Vliet Adling in Bookkeeper.

Rouse's coal at the Estabrook warehouse. 211f

Contractor and Builder

Having moved to Bandon from Myrtle Point I will take up the business of contracting and building. Satisfaction guaranteed in all cases. I also have the Matheny & Rogers Well Auger and will be prepared to sink wells to the depth of fifty feet. I will also install flues and chimneys. Anyone desiring work in these lines call on or address

J. R. JOHNSON.

Box 153, Bandon, Oregon

BOOTS - AND - SHOES

You can't expect to get \$2 worth for \$1, but you can get your money's worth at

M. BREUER'S

Dealer in Boots and Shoes.

Repairing neatly and promptly done at lowest living prices

FURNISHED ROOMS

AT

The Pacific

MRS SARAH COSTELLO

Nice clean rooms 25 and 50c a night; \$1.25 a week; \$5 a month

BANDON --- OREGON

Boyles' Jewelry Store

Carries a fine line of

Watches, Clocks and Jewelry

AGATES CUT AND POLISHED

Agate Jewelry Made to Order

FINE ENGRAVING

If you wish a bottle cold---

Call at the Eagle.

If you love the goods that's old---

Call at the Eagle.

Taint no use to sit and blink

If you really need a drink,

Just make a sign or ring a bell,

And you bet they'll treat you right

Down at the Eagle

Alvin Munck, Prop.

BANDON, OREGON

Lodge and Professional Directory

Lodges are Requested to Notify this Office on Election of Officers and on Change of Meeting Night. Cards under this Head are 50c per in., month

Lewah Tribe No. 48, Imp. O. R. M.

MEETS every Tuesday evening at 8 run at the Bandon Wigman. Sojourning chiefs in good standing are cordially invited to attend. C. T. Fieger, Otto Newman, C. of R. Schem.

Masonic.

BANDON LODGE, No. 130 A. F. & A. M. Stated communications first Saturday after the full moon of each month. All Master Masons cordially invited. C. I. Kime, W. M. Lloyd Rosa, Secretary

I. O. O. F.

BANDON LODGE, No. 133, I. O. O. F. meets every Wednesday evening. Visiting brothers in good standing cordially invited. J. A. McCord, N. G. R. B. Derby, Secretary.

Rebekah Lodge No. 126.

MEETS in K. of P. hall every second and fourth Fridays. Practice nights first Friday of the month; Social evening the 3d Friday of the month. A cordial invitation extended to all members in good standing. Maggie White, N. G. Clara Goetz, Secretary.

Knights of Pythias

DELPHI LODGE, No. 64, Knights of Pythias. Meets every Monday evening at Knights hall. Visiting knights invited to attend. H. M. Morrison, C. G. B. N. Harrington, K. of R. S.

Modern Woodmen.

TABLE ROCK CAMP, No. 9176, M. W. of A. meets the 2d and 4th Wednesdays of each month at K. P. hall. Visiting neighbors cordially invited to attend. E. E. Oakes, Clerk. R. W. Boyle, H. C.

DR. E. W. ROSSITER

PHYSICIAN AND SURGEON

BANDON OREGON

Office and residence in Panter residence property next door to Bijou Theatre

Norton's Book Store

New Location, New Goods, New Prices

Having moved my store to the building opposite Trowbridge's store I now have on hand a full line of

Books, Stationery, Cigars, Tobacco, Etc.

The largest assortment of POST CARDS ever brought to Bandon. Prices always right.

Bandon

BOTTLING WORKS

SOLE AGENTS FOR

National Brewing Co. Beer. Bottle and Steam Beer.

Bandon - - - Oregon

A. MC NAIR

THE HARDWARE MAN

BRIDGE & BEACH Stoves, Ranges and Heaters have in them so many excellencies that they are now acknowledged the greatest sellers on the coast and they are growing in favor every year. We have the exclusive agency in Bandon for these household and office necessities, and prices range exceedingly modest in either case.

TINNING AND PLUMBING A SPECIALTY.

Our Assortment of Hardware, Tinware and Edged Tools is Most Complete.

SUNSET

Sunset Magazine offers the readers of this paper the best opportunity of the year

REVIEW OF REVIEWS . . . \$3.00 ALL FOR

SUNSET MAGAZINE . . . 1.50

WOMAN'S HOME COMPANION 1.25 \$3.00

AND FREE with your order, a beautiful premium, a 75-page book illustrated in four colors with 125 Western views.

SUNSET MAGAZINE

SAN FRANCISCO, CALIFORNIA

BANDON STEAM LAUNDRY

Family Washing a Specialty.

First Class Laundry Work Guaranteed. Special attention given to fine woolen goods.

Cleaning and pressing Mens' Suits and Ladies' fine skirts given prompt attention

F. A. BATES, Proprietor