

## Northern Curry Co. and Langlois.

Curry county joins Coos on the north and extends from the ocean 20 or 30 miles inland. The surface is quite level near the ocean, then further east it becomes rolling and when three or four miles from the ocean we reach the foothills of the low coast ranges.

We feel justified in stating that Northern Curry has a climate unexcelled by any other spot on earth. It is equable, healthful, agreeable and there is only 13 degrees difference between the average summer and winter temperature. Just think of it! The nights are uniformly cool, but the temperature seldom falls below freezing any season of the year.

The leading industry in Northern Curry is butter making. The mild rainy season insures an abundance of grass, and the range stock require no feeding in winter. San Francisco furnishes a ready market for the butter and offers rates which make the industry profitable to the dairymen. The butter making season is nine months long, prices ranging during that time from 18 to 35 cents.

Stock raising is successfully followed here, hundreds of head of cattle being shipped south every year to supply the California market. Sheep raising is very profitable.

Poultry raising has every condition in its favor, the market for eggs ranging from 15 to 60 cents. Garden products are successfully grown everywhere.

Among the fruits successfully cultivated are apples, prunes, cherries, all small fruits, etc. We have no intense summer heat, and so peaches, grapes and cereals are not much grown here. The soil varies from rich bottomland, which is very fertile and deep, to hill land, which is principally used for pasture.

We have good graveled roads.

All may work who desire to do so. Wages vary from \$35, paid to milkers on the dairies, to \$2 to \$3 per day to mechanics.

There are many mountain streams furnishing an abundance of pure water to man and beast, and trout, salmon and other fish for our tables. Larger streams are Sixes river, Elk river and Flore's creek. Flore's creek is well bridged, and noted for its fine scenery. As it nears the ocean it widens into a beautiful lake, much spoken of because of its attractiveness, and is an ideal summer resort of the future.

The mineral and other resources of this part of our county are yet largely undeveloped. We note some progress from year to year, but when we are connected with the world by rail instead of stage, our forward march will be rapid.

Langlois, the central town of Northern Curry stands midway between Bandon on the north and Port Orford on the south. It is a thriving town of about 150 people, who are well disposed, industrious and kind hearted. It contains the usual industries of small country towns, viz: A general merchandise store, two halls, hotel, candy store and billiard room, two blacksmith shops, sawmill, resident physician, etc. They have good schools, a flourishing Sunday school, and two prosperous lodges, viz: The Woodmen of the World and Women of Woodcraft.

They have no saloon, and a quiet, peaceable community.

That Coos is the ideal stock country, must be admitted by all who have given the matter any consideration and are at all familiar with the conditions.

First and foremost of all, Coos county has been and still is a lumber country. The conservative estimates place the present amount of merchantable timber at twenty-seven billion to forty billion feet. It is conceded by all that in the near future the great bulk of this timber will be cut and marketed and the hills whereon stood the magnificent pines will be bare except for the undergrowth. Then the question arises as to how these hills may be utilized to bring the best results. Fruit raising has been tried by many and proven to be very profitable. Stock raising has been undertaken perhaps more extensively than anything else and has always rewarded the industrious and prudent.

It has been the practise heretofore to set fire the tops and underbrush left on the ground after a considerable area has been logged off. Experience has demonstrated that the month of August is the best time to do this burning. That is the driest season of the year and the brush will turn better. Also, when burned at this season, the brush seems easier or more thoroughly killed and is not apt to spring up again from the roots.

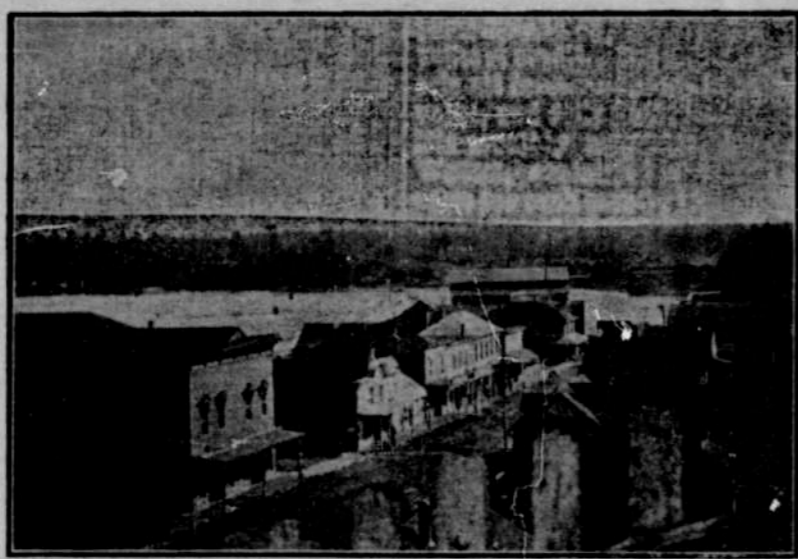
After the ground has been thoroughly burned over and just before the early fall rains, grass seed should be sown in liberal quantities over the burned district. Most people who have tried it seem to favor orchard

through our town some time ago. These cattle were all two years old; had been bought at weaning time and turned onto hill pasture prepared as above described, and had never been fed a mouthful, but had lived, thrived and fattened in the hills; winter and summer—two winters and one summer, with absolutely no expense or labor to the owner from the time he purchased them until he drove them to market. And this is being repeated year after year by practically all our stockmen.

We would suggest to our dairymen that they should each own tracts of this hill pasture where they may fatten their unprofitable milkers and young stock. To those seeking investment, we know of no more promising or surer opportunities than are offered in Coos County stock ranges.

Sheep and goats have been found to thrive on this pasture equally as well as cattle; and in addition to meat, the wool and mohair are source of large profit. Sheep and goats have not received the attention in the past which we believe they deserve.

It seems that goats are especially adapted to this country. Thousands of acres are lying idle, bringing the owners absolutely no income whatever and at the same time they appear to be the natural element of the goat. Too steep and rocky for cultivation; overgrown with poison oak, sallal, thimble berries, salmon berries and huckle-berries and other small shrubs that no other stock would eat but on which goats would thrive, it seems a crying shame that some enterprising party with small capital would not buy up these tracts and stock them with goats. Perhaps in time the goats would kill all this vegetation. Then the land may be seeded as before suggested for seeding burnt



Looking Down Main Street, Bandon--From an Old Photograph.

grass as being the kind best adapted to our hill lands. It grows luxuriantly, keeps green all the year round, and produces a good quality and flavor of beef and mutton. If not too heavily pastured this grass will constantly re-seed the land and eventually kill out all other growth. Can you find a country anywhere that can be so easily transformed from a dense forest to a place with "cattle on a thousand hills?"

But we have not yet told the best part of our story. And that is, that stock will live all the year through on this feed. No labor required in putting up winter feed. At a few of the highest altitudes in the county, a few inches of snow may fall during the winter and cover the feed for three or four days. In these localities, unless the stock raiser has lower ground where his stock may feed these few days, it is advisable to have enough hay put up to feed during that time. But these localities are so scarce and the snowfall so slight and of such short duration that in speaking of the county as a whole they are scarcely to be considered.

One of the finest droves of beef cattle we have ever seen was driven

hills, and the goats replaced with cattle.

These are not experiments we have been suggesting. They have all been tried and found successful. Of course there have been a few failures. But so there are in any and all businesses. Men have profited from the failures of others and learned from their examples to shun the rocks which have caused their wrecks.

We said there have been a few failures. But on further consideration we are unable to recall a single failure in Coos county stock raising. However, we are willing to concede that there have been a few. On the other hand, we might name a considerable number of men who have succeeded in this line, and among them several who have made a sufficient amount of money to enable them to live at ease the remainder of their lives.

In addition to all the advantages we have mentioned, it should be remembered that we have two deep sea harbors on the coast of Coos County—the Coquille river and Coos bay. They afford us the means of transportation by water—the cheapest there is. And we have the San Francisco market, the greatest on the Pacific coast, almost at our door. Ships from our ports cross the Pacific ocean, carrying our produce to the Orient.

## PATRONIZE HOME INDUSTRY

By Smoking

### BOWMAN CIGAR CO.'S FINE CIGARS.

The  
Sign  
of  
Quality



No  
Middle-  
men's  
Profits

### A TALK TO SMOKERS---

We want to show you in these few words why our products are better, and why you are assured of a smoke unequalled by trust products of twice the price. In the first place the common brand, the kind you see advertised on bill boards everywhere, are made either by machinery or in sweat shops, by boys or Chinamen. They pass through the hands of several jobbers before reaching this coast, each having a whack at the profits. The advertising on each individual cigar is about one-fourth of its cost, all of which the smoker has to stand for. Naturally, a cheap grade of tobacco must be used to give all their profits. The cigar reaches the coast dry and hard, and any experienced smoker knows a cigar is at its best a few days after it leaves the cigarmaker's table, the aroma and choice blended flavor is not dried out and you do not have the feeling of smoking a roll of straw.

We put first-class tobacco in our different grades, and do not sell through a jobber. Our product is made under sanitary conditions, and we do not dope it in any way with opium or any of the various other harmful drugs to kill the cheap tobacco effect, and to stimulate a desire for the article. We are a home enterprise and employ local labor. A good trade has been enjoyed thus far, and we believe we will flourish where the tendency to patronize home industry prevails.

### BOWMAN CIGAR COMPANY

BOB BOW MAN  
YANKEE EFFORT

DON VENTURA  
WALPOLE

## The Family Liquor Store

MARSDEN'S

### Weinhard's Brewery Depot

GEO. A. STOLTZ, Mgr.

Weinhard's Bottle Beer, Finest Wines  
and Liquors for Table Use  
a Specialty.

Ranchers and Farmers May Secure any  
of our Standard Liquors in Bulk  
Your Patronage Solicited.

Weinhard's Brewery Depot  
BANDON.