

### Bandon Woolen Mills

The Bandon Woolen Mills was incorporated in May, 1904, and the officers of the company are: Elbert Dyer, President, W. D. Marshall, Vice-President, Geo. P. Topping, Secretary, and C. Y. Lowe, Treasurer. E. Dyer, W. D. Marshall, R. H. Rosa, A. McNair, and R. E. L. Bedillion are the present directors of the company, and R. E. L. Bedillion is the general manager. This plant is a fine addition to our many industries, and is owned entirely by the business men of the little city-by-the-sea. Too much credit cannot be given those who promoted the plant,

development in other lines. During the present year the school authorities have been kept busy providing additional school room for the rapidly increasing attendance. Already two extra teachers have been added since the schools opened in September, and the indications are that one or two more will be needed before the close of the school term. In addition to the main building three outside rooms have been fitted up to accommodate the increased attendance. More school room is needed and steps are being taken to provide it in the near future. A fine site, well located for the purpose, has been purchased, and in the near future a commodious twelve or fourteen room building will be erected thereon, giving the school the best of housing and equipment.

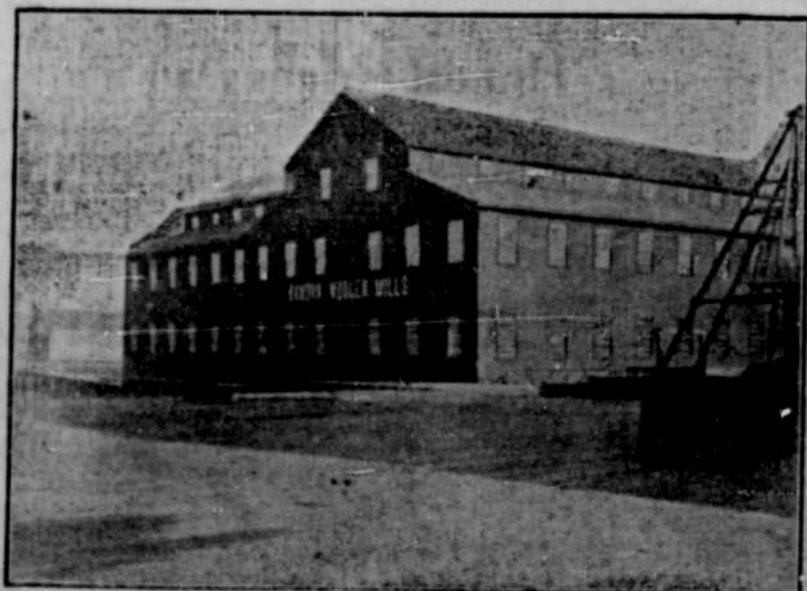
authorities to assure to all who make their home here the best of school privileges. This spirit maintained will insure for Bandon better schools from year to year.

The school officers for the district are Gurley Boak, Geo. P. Topping and Charles Kime. Clerk, Mrs. Laura Logan. Teachers:

Miss Bertha Wilkins, First Grade.  
Miss Minnie Yeo, Second Grade.  
Miss Effie Collier, Third Grade.  
Miss Clara Davies, Fourth Grade.  
Mrs. Myrtle Myers, Fifth Grade.  
Miss Margaret Murphy, Sixth Grade.  
Miss Carrie Rodine, Seventh and Eighth Grades.  
Mrs. H. G. Ostien, High School Assistant.  
H. G. Ostien, Principal of High School, and Superintendent.



Bandon Woolen Mills.



The growth of the public schools is keeping pace with the rapid de-

and who also helped very much in the construction of the same. This plant is not only one of Bandon's leading industries at the present time, but is also operated successfully, and is the means of distributing about two thousand dollars monthly in the different families about town. The plant employs many young women who would be unable to get work in other industries. This plant has been in operation about two years, and is making an excellent grade of goods, which is all shipped to Eastern markets, thereby bringing to Bandon about seven thousand dollars per month. This plant is not confined to one class of goods, but in addition to manufacturing all kinds of flannels and carriage linings, they have a complete plant for the making of all kinds of Gent's clothing and the finest of cassimeres. The mill has a beautiful location, fronting on the Coquille River, with a large wharf in front, where deep water vessels can land and discharge cargoes; by being so located, this company is saved the charges of wharfage and drayage on goods going to or from the plant. The Bandon Woolen Mills is no longer of an experimental nature, but the success of same is now an assured fact.

The school enrollment numbered over three hundred the first month of the year, and new pupils are entering nearly every day. Nine months' school will be maintained the present year. The eight years of work as provided by the state course of study is carried on, and the full four years' of high school work is offered in the high school.

The school board, teachers, and patrons are all working together with a new and increased interest this year to build up a school that will be first-class in every particular, and second to none. Monthly Teachers' and Patrons' meetings are being held, where topics of general school interest are discussed. These meetings will bring all school interests in closer touch, and will greatly increase the efficiency of the schools. The finances of the district are in good condition, and the funds ample to meet the cost of an efficient school; and it is the purpose of the school

### Strawberries in Coos.

Can you imagine a berry that would not go to the bottom of an ordinary teacup, but remains suspended against the sides? Coos Bay has produced such a berry.

Fourteen berries to a heaping quart box is what is shown in that measurement.

A case of 24 boxes running from 14 to 18 berries in the box, when you come to the wholesale department.

A single vine with 160 matured and maturing berries were seen and the count taken by the writer, after many berries had already been gathered from it, and this was of the ordinary run of the patch selected at random.

As for profit: take your pencil and figure it out—160 berries the way they run, counting 20 berries to the quart, should make at least two gallons of fruit; at 50 cents a gallon that vine is worth a dollar for a season. But cutting it down a few, call it worth but 25 cents; in the patch shown of about a quarter acre, were 1000 plants, meaning at a very low estimate that it would produce in money \$250 a year. Can any crop or any country beat that?



**A. McNAIR,**  
The Hardware Man.

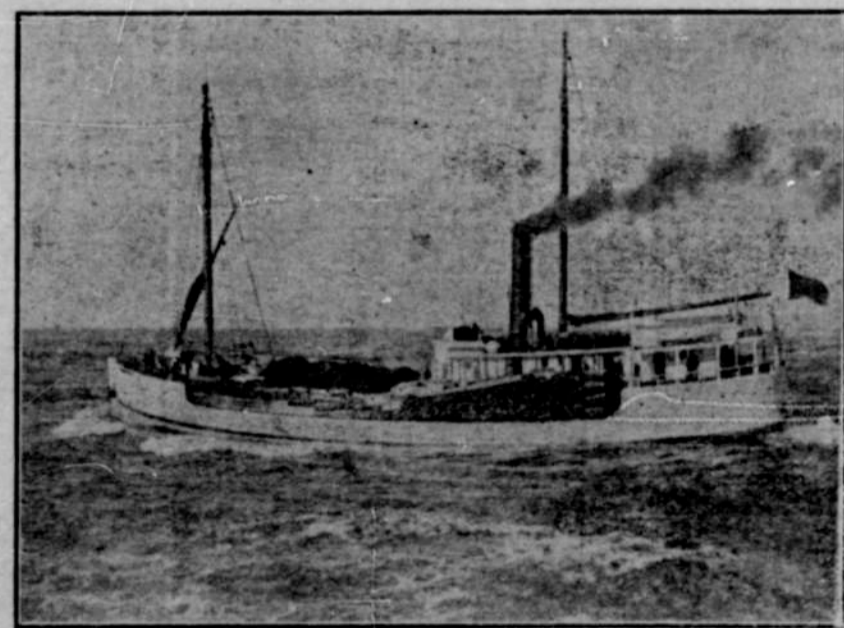
Hardware of All Kinds.  
Tin Shop in Connection.

Sporting Goods, Agricultural Implements, Plumbing, Stoves and Ranges.

Paints, Oils and Varnishes.

Bandon, Oregon.

### The Speedy Passenger Steamship Elizabeth, New and Modernly Fitted,



CAPT. J. OLSON, Master.

Carries Freight and Passengers Between Coquille River Points and San Francisco. Special Accommodation for Passengers. Built Especially for Coquille River Traffic.

J. E. WALSTROM,  
Central Warehouse, Agent, Bandon.

E. T. KRUSE,  
Managing Agent, San Francisco.