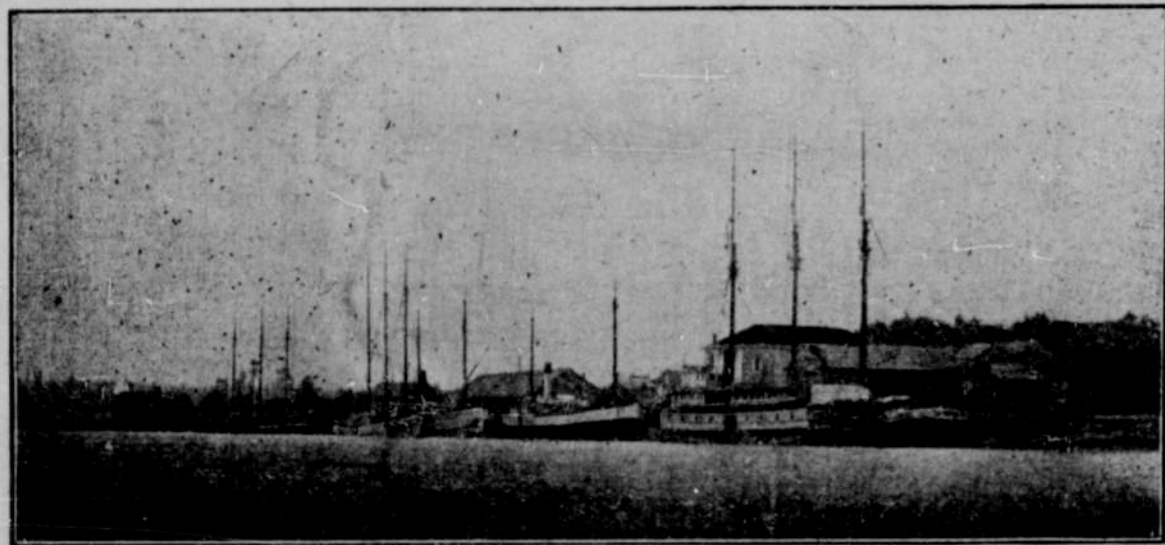


## Descriptive of the Fourmile Country, South of Bandon.

Fourmile Creek is about eight miles below Bandon regardless of the name which is very misleading. The creek does not seem to be four miles from any particular spot nor does the name refer to the length of the stream. We have never been able to find anyone who could tell why it was so named. Some portions of this country were settled many years ago, and a few of the farms are under good cultivation, the most notable being the dairy ranch of the Cope Brothers, on the South Fork, and that of Mr. Shaw near the mouth of the creek.

The land is rough and mountainous, but there are always desirable building spots even on the roughest. It is more easily cleared than is usual in these wooded countries, and the soil is very productive, especially on the hillsides and flat tops of moun-



Vessels Loading at the Wharves of Bandon Warehouses.

tains. The bottom land here has proven to be inferior in quality when compared with the higher lands; the finest gardens are found on the uplands.

Fourmile country is fast settling up, and yet there is land to be had if one will go back among the hills to look for it. It is to be expected that the first settlers will take the land nearest the streams, and consequently most accessible. At the time these lands were taken, the discomforts and hardships were even greater than are to be met with at the present time, yet how common it is to see the look of disappointment on the faces of those who are looking for land when they are told that they must strike out into the woods.

The first settlers have made it possible for these who come later, opening up roads, clearing away timber and letting in the sunshine, so that now these openings furnish grass in abundance. One young man who has taken a claim here finds that he can cut a good crop of hay the first year just by making a blockade to keep out the neighbors' cattle. The fires that swept through this country about forty years ago cleared up a large section. There are tracts of prairie land covered with mesquite or velvet grass, and not a stump to be seen, only a few charred tree trunks. These places are back in the mountains, it is true, but there are trails leading to them, and they are better traveling than the roads on the river bottom, for the hill roads are dry most of the year.

The big fires cut into the valuable tracts of timber so that at the present time only a small amount is to be found of the old growth, while a heavy new growth covers a large portion of the land. The destruction of the large timber makes the land more easily cleared and more valua-

ble for cultivation. The most fertile of all is that which has a growth of vine maple or alder. These strips are very easily cleared and make the best building spots on account of the close proximity to water.

With the rich soil and our unrivaled climate, this country is destined to be the garden spot of Oregon. Vegetables of all sorts, berries and other fruits, thrive here with very little care, and no insect pests worth mentioning. Wheat, oats, rye and barley are cut for hay, while clover and vetches are raised for the dairy cows.

The principal industry of the past has been sheep and cattle raising, but as the land is being taken for homes the ranges are cut up and this industry must give place in a great measure to the cultivation of the soil. There are portions of

The railroad will cross the creek about a mile from its mouth. There is a good wagon road now, which, with a little improvement, will make a highway with an easy down hill grade, by means of which the timber and produce can be taken out to market, and we predict great changes in the near future affecting the prosperity of the Fourmile country, both materially and socially.

There is still some very fine timber on the sheltered portions which escaped the ravages of the big fire; immense firs, Port Orford and red cedars. Even in the burned districts there is a large quantity of down timber of the red and white cedar which will be in demand for matchwood and shingles. This will furnish employment right at home for a man and his team and make the

lands known as Indian Allotment lands dotted here and there through the whole length of the Fourmile country. These lands will continue to be used as free range for all until some action is taken toward throwing them open for settlement; this may not occur for several years. It is seldom necessary to feed stock in the winter, and many stockmen never make any hay at all. Sheep and cattle live out on the open hillsides all winter and are fat in the spring. Sometimes at long intervals there have been heavy losses on account of severe weather, but it is very unusual. The man who prepares for emergencies has nothing to regret at least, and nothing to lose.



Lighthouse at Bandon.

This country has always been the hunter's paradise. By the elk horns now found we know that the elk were very plentiful at one time, it is said that there are a very few in this vicinity yet. Deer are found in large numbers, but with the coming of the settler they are more shy, keeping further back in the hills. Within the last four years I have seen four in my dooryard and several others out on the hills. Bears, wildcats and panthers also inhabit this region. The land along the streams for a distance of five miles is all taken.

building of good roads an object.

There are several good locations in this vicinity for a shingle mill and timber enough to keep it in operation for some time to come. An industry of this kind would help the clearing of the land and be a general benefit to the community.

The second growth fir of this section is of exceedingly fine quality being unusually tall and straight and free from limbs. Much of this timber is large enough to be sawed into lumber while the smaller growth may be used for piling. A sawmill and a pulp mill are projects worth considering by enterprising business men looking for places for investment of capital. A branch railroad or tramway can be built connecting with the main line. This can be done at a nominal expense and the raw material or the

finished product can thus find an outlet. With the opening up of the country new industries will spring to life.

The greatest factor in the prosperity of a community is contentment, without it there is little incentive to the promoting of permanent institutions. It is rare in this community to hear complaints and wherever this is encountered it is some "chronic kicker" who has the habit of being dissatisfied. It is pleasing to note the cheerful hopeful atmosphere and one can but wish success and prosperity to those faithful toilers who are straining every energy in the building up of that greatest of all institutions, the home.

## Xmas Hints for Buyers Who are Looking for Christmas Tide Gifts.



It is well known that we, who handle goods for holidays, know pretty well what will please, and in selecting our stock we get only what will be appreciated by the various recipients. Not that we can judge all people the same, but our holiday line is carefully selected, useful and each article is dainty and is the finest of its kind.

A swell line of hand painted Japanese and China Dishes, at prices ranging from 25 cents to \$10, all hand work from the cheapest piece to the most expensive. Another fine gift would be a Bottle of Perfume, especially for the Christmas trade. These are Reigler's best perfume and come in all sizes.

A line of box stationery that has never been surpassed in Bandon now in. The latest and finest paper in fancy boxes, especially for this season at prices from 25 cents to \$4 a box. The boxes may be utilized for gloves or handkerchiefs. Our line of Christmas candies both in bulk and boxes would be hard to duplicate and could not be excelled in town. All prices.

Toilet and Manicure Sets, something especially fine for this line at prices to please. Our Squaw Bags are worthy of mention, and they are the latest hand bag novelty.

A line of the famous Conklin Self-filling Fountain Pens on display. These are fully guaranteed. Money refunded cheerfully if not as represented. Prices up to \$10.50.

Cigars in Christmas boxes. Meershaum Pipes—What can a smoker more appreciate?

We have Christmas Cards, all kinds and at all prices. Many other useful articles too numerous to mention in this space, may be found extremely suitable for this season. Call and see our stock, anyway.

## The Bandon Drug Co., Bandon, Oregon.

STEIGER & KERR'S  
OCCIDENTAL STOVES  
AND RANGES  
—NEVER FAIL—



Builder's Material and Supplies  
Heavy and Shelf Hardware

Honest Prices and a  
Square Deal to All.

The Bandon Hardware Co.,  
Opposite the Postoffice.