

## McKinley Monument.

The McKinley mausoleum, which was dedicated by President Roosevelt October 7, stands on an eminence to which has been given the name of Monument Hill, about two miles due west of the McKinley home in the city of Canton. It is not an ornate affair, but its simplicity is relieved by sufficient artistic embellishment to make it an object of beauty, as well as one of massive proportions and breadth of design.

Four states have contributed a share of the material which has been used in the building of the monument. The granite used in the approaches and the mausoleum proper are from the quarries of Millford, Mass. Tennessee has furnished the gray marble for the interior of the tomb, while the sarcophagi, which now hold the bronze caskets in which lie the bodies of Mr. and Mrs. McKinley, are of dark green granite from Windsor, Vt. The base upon which the sarcophagi rests is black granite from Berlin, Wis.

From the first step of the approach to the monument, the actual top of the structure is 153 feet 6 inches—the mausoleum itself being 98 feet 6 inches high above the summit of the mound. The top of the dome has an oculus 15 feet in diameter, through which comes a softened light, which adds greatly to the beauty of the interior.

The mausoleum is 78 feet 9 inches in diameter. In the center of the floor between the dome stands the sarcophagi containing the bodies of the president and Mrs. McKinley, and in niches on the north side of the dome are the caskets containing those of the two daughters, Ida and

Mary, who died in infancy.

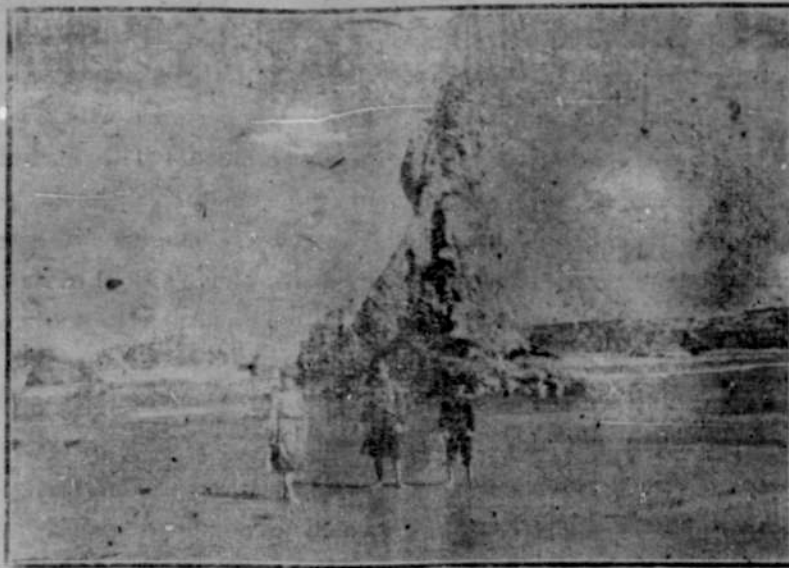
Huge doric columns are placed around the interior in such a manner as to appear half buried in the sides of the building. The floor is of mosaic marble, having been brought from many states for the purpose.

Half way down from the top of the 125 granite steps that lead up to the main entrance on the south side of the mausoleum stands an heroic bronze figure of President McKinley representing him in the attitude usually assumed when speaking, his left hand holding a roll of manuscript and the right hand in the trousers pocket. Behind the figure is a bronze chair encircled with a wreath and draped with the flag of the United States. The bronze figure which is 9 feet high, stands on a pedestal 18 feet from the base to the feet of the figure.

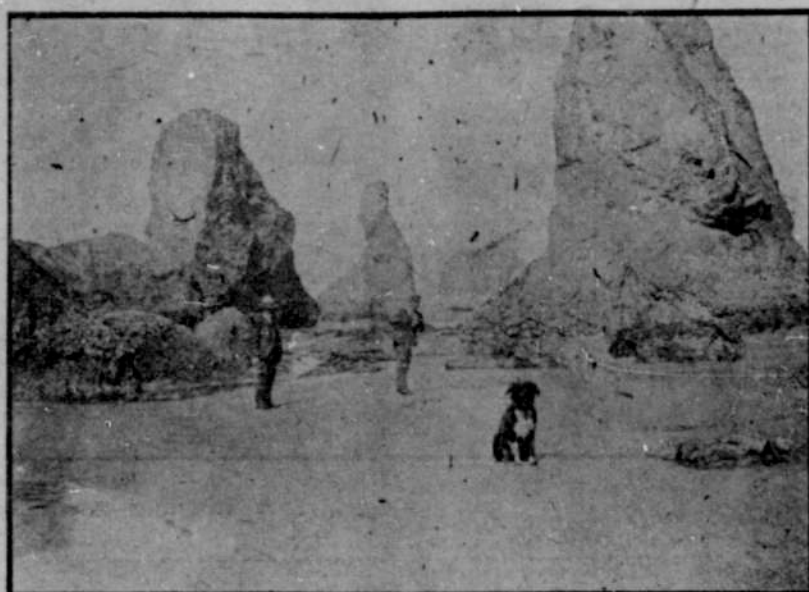
Twenty-six acres of ground were purchased by the monument commission, and the utmost art of the landscape gardener has been lavished upon the grounds. Natural streams flow past the base of the mound, and trees and flower beds have been arranged with an eye to the greatest artistic beauty.

From the entrance to the grounds on the south to the foot of the mound is 590 feet, and along this distance a double driveway 175 feet in width has been constructed. Between the two sides of the driveway is a lagoon, which is constantly filled with fresh water. Long rows of trees flank the lagoons and driveways.

The mausoleum and grounds have been built and arranged at a cost of \$500,000, and it is the intention of the commission to raise an endowment fund of \$1,500,000, which precludes the charging of a fee for ad-



TWO PHOTOGRAPHS OF THE UNRIVALED  
BANDON BEACH SCENERY.



mission.

At the next meeting of the mausoleum trustees, custodians will be chosen, and it is the intention to ask for the indefinite detail of soldiers of the regular army to guard the tomb.

The architect was H. Nauburn Magonigle, of New York, and the designer of the bronze figure standing before the mausoleum, was Charles Henry Nichols.

## Oregon Apples Are Far In The Lead.

"Choice apples will command high prices the coming winter," said a commission merchant today. "Oregon is fortunate in having a fair crop of the fruit this year, though the output is, of course, under the normal. It is the eastern demand that will this year make a firm market here for all varieties of winter apples."

"In the Atlantic coast states for the most part in the middle western states and even in the Rocky mountain country, the apple crop is short, and consumers in those states will have to look to the Pacific coast for a good part of their needs in the apple line."

"Good Kings, which are about the best apples in the local market at this time, are worth \$1.65 a box, and it is no trouble to sell them at that figure. I believe it is safe to predict that they will sell for \$2 a box within two weeks. The market is now short of good apples, and the chances are that there will be a scarcity for several weeks, and when the regular winter shipping sorts are ready for the market there will be so great a demand for them in the east that they cannot be expected to sell cheap here."

"Spitzenbergs and Spys will

hardly sell here for less than \$2 a box, and it is altogether possible that they will command a better price than that when the market for the winter sort opens and the fruit begins to move. There are now some apples on the local market that sell for less than \$1.25 a box, but they are hardly a factor in the market. The demand for even such as these is such that they do not stand long unsold." Oct. 10.

## What Next?

A number of administration organs pinched by the exactions of the tariff fed paper trust have finally joined in the demand that the tariff on paper and wood pulp be repealed. Certainly it should be, for it has no other effect than to put a premium on the destruction of our own forests and enrich a few pampered tariff barons. But when these administration organs have succeeded in ridding themselves of a tax that the foreigner does not pay, will they kindly come to the assistance of several millions of us who are compelled to pay, the tariff tax, that the foreigner also does not pay, on shoes, clothing, hats, thread, nails, wire, sugar, lumber, coal, oil and its by-products, leather, cordage and numerous other things? If the tariff on paper and wood pulp pinches the newspaper proprietors, how can they deny that the tariff on other things also pinches the people who must purchase those things?

Send us the names of  
Persons to whom you  
wish copies of this issue  
sent, enclosing stamps  
for payment. Price is  
3 copies mailed for 25c.

# To the Prospective Resident!

We submit, following, a partial list of properties listed with us that should be well worth your perusal. We are not Curb-stone Real Estate agents, and are in a position to be of mutual benefit to our clients.

### Real Estate List.

Large lot and new house in Bandon \$650, good location.

3 lots and nice house, good location in Bandon \$650.

1 ranch 185 acres 4 1/2 miles from Bandon well stocked ready for business, fine orchard, 75 acres of bottom land \$13,000.

40 acre ranch 6 1/2 miles from Bandon has 400 cords of matchwood on it \$750.

162 acre ranch in Curry county near Langlois \$800.

Fine residence block, 200 feet river front with landing, full bearing orchard, large dwellings 8 other buildings, with furniture and fixtures, fine location for a store or saloon. \$2000.

Several fine business lots in best business part of Bandon from \$1,500 upwards.

1080 acres of ranch land, residence building, seven hundred acres of bottom land, balance number one bench land, fine lake fishing and hunting. Price \$33,000.

5 acres just outside of the corporation good level land. \$750.

2 one acre tracts, adjoining town cheap.

280 acres improved ranch, fine bearing orchard, 90 acres bottom land, 10 miles from Bandon. Large amount of white cedar on it, price \$4000.

House and 2 lots in town, good location, land set out in strawberries, \$550.

River front ranch, 1/2 mile river front on deep water. 177 1-3 acre coal land—\$3500.

Houses to rent, Coos and Curry property for sale, ranches of all sizes, in both counties for sale.

Store room to rent cheap in the

best part of Bandon, up and down tairs.

General merchandise store with stock and fixtures with building and large lot, doing a business of \$25,000 to \$30,000 per year, well located, and long established business, which can be doubled by the right parties. Price \$9000.

Manufacturing plant for sale. Good paying business. Big frontage on deep water. First class business proposition on Coquille river—\$25,000

A number of first class deep water front mill sites for sale cheap.

5 timber claims, cruise 3,000,000 feet each, mostly white cedar, handy to roads and easy to log. Price \$2500 each.

Lots \$15 and up, located in all parts of town and surrounding addition. Property of all kinds bought and sold at living prices.

Agents for the Agricultural Insurance Co., of Watertown, N. Y., and Glens Falls, N. Y., Fire Insurance Co. Rates Reasonable.

# BANDON REAL ESTATE Company,

C. T. BLUMENROTHER, Manager