

...Bandon's Exclusive Dry Goods Store...

Mrs. Thos. Anderson

.....Dealer In.....

Dry Goods and Ladies Furnishings



In a few days we shall move to our new quarters and open up new goods, where we will be pleased to meet you. Call and see our new store. It is different to others. It is so arranged that it will be no trouble to show the goods. We offer best quality and up-to-date merchandise. We offer it at prices no higher---and in many instances less---than other stores. Our entire attention is given the one line; we have made it a specialty and a study, hence our success. If you have never bought here, now is the time to begin.

We show a fine assortment of staple goods as well as the season's latest novelties.

Trimming Buttons Made Up to Match Suitings.

Mrs. Thos. Anderson

We Carry Only the Very Latest in Suitings.

Bandon, - Oregon.

Bandon Churches...

In Bandon there are seven church organizations, four of which own their buildings, and all have a good membership. The religious influence of these churches has done, and is doing much toward building up a moral and temperate community. It is said that Rev. Swafford has the honor of preaching the first Protestant sermon in Bandon. It was delivered in the open air on a romantic spot, at the western base of Tupper Rock. It was in the year '75 or '76. The first bell in Bandon is said to be the one in the Episcopal church, which was donated by Mrs. Sellwood. A brief history of some of the Bandon Churches is given below:

METHODIST EPISCOPAL.

This Society was first organized in 1832, by the Rev. L. J. Jones, the Presiding Elder of the district. The Rev. Quimby was the first regular pastor stationed here. Services were first held in the Presbyterian Church, until 1835, when a church was erected. The charge has been served by the following pastors; part of the time in connection with Myrtle Point and the last few years being part of the Coquille and Bandon charge: Revs. Quimby, McCain, Buckner, Baldwin,

Brink, Goodpastre, Bryan, Moore Myers, Holcombe, Beatty, and the present pastor W. R. F. Browne. The church is now in a flourishing condition, with good Sunday School, and Junior and Senior Epworth League Chapters, and an energetic Ladies Aid Society. There is no debt on the property. Efforts are being made toward having a resident pastor, making this the headquarters of a new charge.

PRESBYTERIAN.

Fifteen years ago—Feb. 6, 1891, the Presbyterian Church of Bandon was organized by the Rev. Eneas McLean. This was the beginning of Presbyterianism on the Coquille. At the time there were 6 charter members to enter into the organization, namely: Mr. Samuel D. Barrows, Mrs. Deette Barrows, Mrs. Catherine Charleson, Miss Jane Charleson, Mrs. D. T. Barrows, and Mrs. Ella M. McLean. With these persons as a nucleus, the church has found a place for steady service and gradual growth. For awhile its membership included a contingent in Curry County until a church was organized at Port Orford. Almost simultaneously with the beginning of the church, a Sunday School was organized with 14 pupils. This was followed before very long with a Young People's Society.

The church was incorporated May 27, 1891 as the First Presbyterian Church of Bandon. It was soon after this and yet during the ministry of Mr. McLean that the present suitable building was begun and finished.



PRESBYTERIAN CHURCH, BANDON.

Following Mr. McLean seven ministers have served the church: Revs. H. A. Mosser, A. Marcellus, W. C. Scott, Robt. Eunis, Geo. Gillaspie, A. Haberly, and Geo. H. Roach. The church building was dedicated Jan. 31, 1904, free of debt. This paved the way materially for growth and greater efficiency. During the mission services of J. E. Snyder and Mr. Jeffries in May 1905, the membership was doubled. Thus upon the foundation that has already been laid the church seeks to build worthily, and to grow commensurately with the growth of the community about her.

EPISCOPAL.

Bishop Scott, the first Bishop of the Protestant Episcopal Church in Oregon, died in 1867 and was succeeded by Bishop Morris in 1869, who, in 1871 appointed Rev. E. Bonnell to the charge of the tide water and coast district of Douglas, Coos and Curry. The points where services were held were Scottsburg, Empire City and in a building on the north bank of the Coquille River above Randolph Slough, also at Langlois, Port Orford and Ellensburg, now Gold Beach. Following Mr. Bonnell the ministers in succession were: Revs. Stevens, Wells, (now Bishop of Spokane) and Sellwood, who in addition to the places above mentioned, officiated at Gardiner, Marshfield, Coquille City and Bandon. In 1884 Rev. Wm. Lund took charge and was succeeded in April 1889, by the present rector Rev. Wm. Horsfall, who held his services in Rosa's Hall and in a room of the building now occupied by the Bandon Drug Co. In 1893 the corner stone of the Episcopal Church was laid by Bishop Morris. The church, which was built by Wrenshall Brothers, contractor, was opened for services in 1895 was consecrated by the Bishop in 1895 as the Church of St. John by the name.

St. Mary's Catholic Church was dedicated about twenty years ago. Services are held about once a month by Father Donnelly of Marshfield.

REORGANIZED CHURCH OF JESUS CHRIST.

This church was organized in Bandon, Feb. 19, 1901, by W. L. Harris, acting under authority of Apostle G. T. Griffiths. He was assisted by Elder C. E. Crumley. The membership at that time was about 130, but since then the district has been divided into three branches, and the Bandon branch has a membership of 64. The Sunday School was organized in June, 1899. The Religio was organized about four years ago, and meetings are held every Friday night. Church services are held every Sunday morning and evening by the pastor, D. E. Stitt. The sixth annual reunion of this church will be held in Myrtle Point, commencing July 27th, and continuing for ten days. Apostle G. T. Griffiths, Elders Keeler, Chapman and Clapp, Priest Edgar H. Smith, and the local elders will be present.

The First Day Advents have an organization and services are held at Twomile. J. S. Tilton is the pastor.

The M. E. Church South and Methodist Protatant have organizations and hold services occasionally.

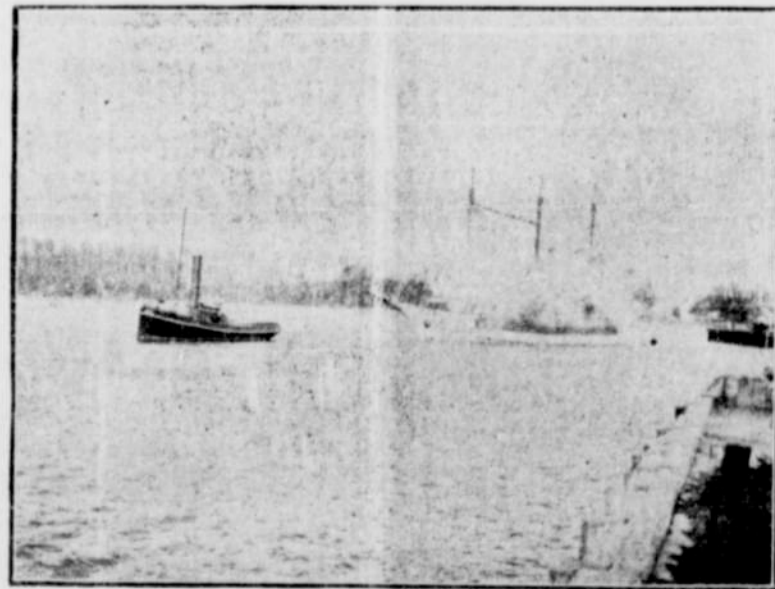
Lodge....

...Directory

Bandon is well supplied with lodges and all seem to be in a healthy condition financially and with a growing membership. The following have organizations here: A. F. & A. M. Eastern Star, I. O. O. F., Rebekahs, K. of P., F. of A., A. O. U. W., Degree of Honor, M. W. A., Royal Neighbors, W. O. W., Fraternal Aid, The G. A. R., W. R. C., Longshoreman and W. C. T. U. also have organizations.

W. R. Haines Music Co.

The W. R. Haines Music Co. Marshfield, will refund all expense of transportation, including a days' stop at Marshfield, to anyone purchasing a piano, coming from the following places or tributary thereto: Langlois, Bandon, Coquille and Myrtle Point. Have several different makes of all styles and finish. We carry piano players, pipe and reed organs, talking machines and a full line of sheet music and musical merchandise, also Domestic sewing machines. Easy payments.



BANDON HARBOR. Tug Triumph Towing Schooner Ruby.

FRUIT GROWING

While there are no commercial orchards in the immediate vicinity of Bandon, numerous family orchards show what the possibilities are in that line. Apples, pears and plums including prunes can be grown on all the uplands, the tree being thrifty and vigorous and bearing in profusion, fruit of superior quality. Cherries also do well and English walnuts will undoubtedly prove a profitable crop. For small fruits it cannot be excelled. Strawberries yield enormously, frequently bearing continuously from May to October. Blackberries, raspberries, currants gooseberries all are wonderfully productive. The writer of this article has traveled more or less through a majority of the union and has visited the best fruit growing sections including the famous Santa Clara and Vaca Valleys of California and has no hesitancy in saying that for general fruit farming this county is not excelled if equalled any where in the United States.

These same uplands grow fine vegetables, wheat, oats, and grass, and when we take into consideration the fact that in the famous valleys in California above referred to, that lands are valued at prices ranging from \$150 to \$600 an acre, while lands here equally productive and profitable, can be bought for one-tenth that price and even less than that, the opportunity to lay the foundation for a competence for life at a very small outlay, must be apparent to every practical mind. No one need fail in this line who will work. Capital is not a necessity. Employment can be had at wages much higher than in California or the East, except in skilled labor, and pluck and industry are the only requisites for success. In fact, it is doubtful if any where on the globe, the poor man, who will use both brain and brawn, can find better openings than in this part of Oregon. Come and be convinced.

W.