



VESSELS LOADING AT PROSPER MILL CO. WHARF.

BUSY PROSPER.

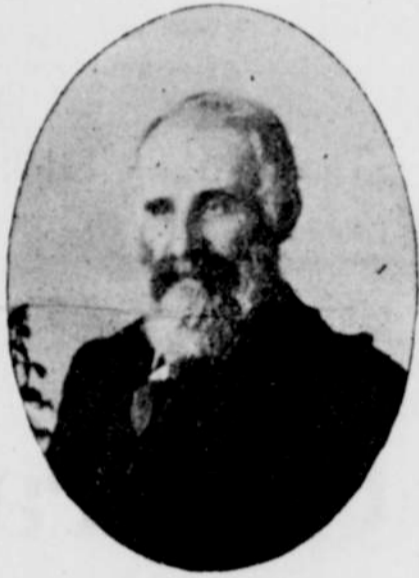
A Thriving Little Community. A Few Notes About its People and Enterprises.

The busy little town of Prosper is located on the south bank of the Coquille river about 2½ miles above Bandon. It is the principal place of importance between Bandon and Coquille City. The population is about 100 and is growing. During the past year a number of people have built homes and located here.

The place has a good school about eight months in the year with an average daily attendance of 22 pupils. At present there is no church building but services are held occasionally in the hall.

With its sawmills, shipyard and cannery the name of Prosper is suggestive of busy and prosperous times.

The town of Prosper was founded by Mr. A. Pershbaker.



A. PERSHBAKER, Founder of the Town of Prosper.

Mr. Pershbaker came to Coos county in 1867, and having had bequeathed to him by a younger brother a small merchandise store, entered his first business venture at Randolph in 1870. He gave the business his strict attention and with many struggles, brightened with brilliant prospects, he made it a successful undertaking. Randolph in those days was quite a lively place as it was the supply point for a large section of country. For about twenty-three years Mr. Pershbaker was engaged in business at this place and shared in the benefit from the black sand harvests which made Randolph a noted place in those days.

In 1887 he commenced work on his sawmill and had it in frame. In 1888 the machinery was installed, and sawing commenced Nov. 18th. The mill had a capacity of 20,000 ft daily. Wm. Hammerburg was foreman and T. P. Hanly head sawyer. For several years he conducted the store at Randolph and the sawmill at Prosper, but later combined the two at Prosper. In 1893 a new store was built

near the mill. The store building and stock from Randolph was moved on scows to its present site and was converted into a warehouse, while the new one a substantial up-to-date two-story structure was occupied on the first floor as the retailing merchandise department. In January 1895, after a season of excessive rainfall a landslide occurred which carried the building into the river wrecking it beyond repair. Fissures in the hill were discovered a week before the landslide occurred and the stock on the first floor and household goods on the second were removed to a place of safety. The loss of the building was estimated at \$3,000. In 1895 another building was erected beside the warehouse in which the stock was placed and which still marks the business center. In 1896 Mr. Pershbaker completed a handsome, modern residence in the west part of town where the family at present reside.

In 1903 Mr. Pershbaker retired from active business, selling the mill and store to Sudden & Christenson of San Francisco and now bears the name of the Prosper Mill Co. Many changes have been made since the transfer, the capacity of the mill increased, electric light plant installed, wharfs and booms enlarged and various other improvements made.

PROSPER MILL CO.

The Prosper Mill Co. bought the mill property of A. Pershbaker in December, 1902. Sudden & Christenson of San Francisco are the principal owners. They are also interested in the Aberdeen Lumber & Shingle Co. of Aberdeen, Wash., and the Siler Mill Co. of Raymond, Wash. When this company came into possession of the mill they immediately commenced the work of remodeling the plant and extending the wharf and boom. The mill makes an average run of over one million feet monthly, and has lost very little time during the past three years, probably not over a week. The company now has sixteen million ft. of logs contracted for on the upper river for the logging season of '06-'07. The steamer Elizabeth loads at this mill. The schooner Ruby has been taking lumber from this mill ever since she was built. The Lizzie Prien loads here, and there are always from four to six vessels running regularly.

The company now has under advisement and will make a change some time this month from what is

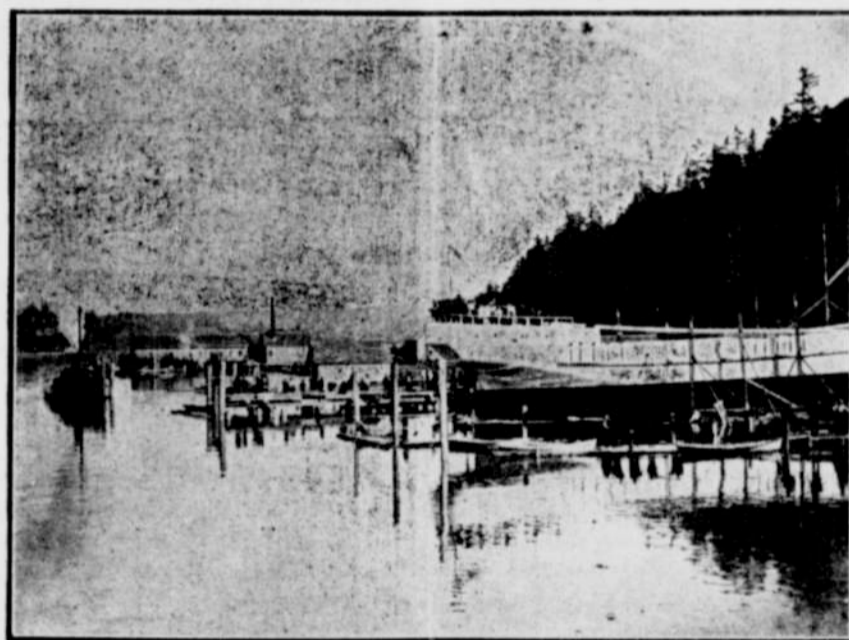
known as the shot-gun feed to the Beck feed, which will allow them to cut lumber 80 ft. in length—the present length is 56 ft. At the same time they will put in a system of live rollers which will facilitate handling and increase the output from 45,000 to 55,000 ft. daily. It is the intention to install a pony band saw a little later. These extensive repairs will cause the mill to close down for a short time, but it is thought that the work can be accomplished in a week or ten days.

The company also have a store in connection with the mill and carry a complete line of general merchandise and make a specialty of loggers' supplies.

Wm. Hicking, the manager of the Prosper Mill Co., came from Aberdeen, Wash., to take charge of the business when the mill changed hands. He is an indefatigable worker, and it is due to his good management and strict attention to details that the mill has made such a good record in continuous running and up to the limit output.

SHIPYARD.

A number of vessels have been built in Prosper, viz.: Prosper, Mas-



LAUNCHING SCH. OREGON.

cott, Winchester, Mizpah, Oregon, and two steam schooners, Coquille River and Aurelia. A permanent shipyard and dry dock have been fitted up by E. Heuckendorff, who came here from Marshfield about one year ago. Mr. Heuckendorff is now building a large steam schooner for Sudden & Christenson, of San Francisco, which will be ready for launching soon. The vessel will be christened the "Raymond" and will carry lumber from Raymond, Wash., to San Francisco. He is also building at the present time a large scow for the Prosper Mill Co. with a capacity of 150,000 ft. of lumber which will be used in scowing lumber to Bandon.

SALMON CANNERY.

In 1894, the cannery, which was

built a few years prior by J. R. Gilstrap, was burned, the cause unknown. In 1904 another cannery was built which is now being successfully operated by a stock company of which R. W. Bullard is the president, Sam Nass manager, and Mrs. S. W. Faby secretary. The fishing season opens about August 15th and continues until Nov. 20th. Silverside salmon is the principal output. This cannery is equipped throughout with modern, up-to-date machinery, and is the means of distributing a large amount of money to the inhabitants of the lower river during the fall months.

CARMAN & CRITES.

On the opposite side of the river from Prosper is the Carman & Crites sawmill. This mill was built about three years ago by Messrs Carman & Crites, who came from Gray's Harbor, Wash. The mill is equipped with a band saw and has a capacity of 65,000 ft. daily. At present it is said to be the best equipped mill on the river. Since January 1st they have been sawing logs for the Cody Lumber Co. A number of new cottages have been built on their property this year for their employees.

The Wheeler Real Estate Co.

BANDON, OREGON.

Agents for Farm, Coal and Timber lands and Bandon properties.

Reliable information as to the country and general conditions free to all inquirers.

San Francisco connection.

Large bodies of coal and timber lands. Tracts of all sizes for Fruit, Dairy or Stock farming.

T. B. WHEELER, MANAGER BANDON OFFICE.

If You are Thinking of Making a Change

write and let us tell you about one of the

Finest Valleys on the Coast

Where the climate is ideal and crops were never known to fail. We have a valley over 40 miles long with a fine river running through it emptying into the ocean. It is lined with saw mills and factories and there are unlimited opportunities for others as there is timber enough to last for the next hundred years. We have some fine bargains in timber land as well as farm and dairy land. We also have some fine bargains in town property in one of the best towns in the county noted for her fine schools and churches of nearly every denomination.

THESE ARE A FEW OF OUR BARGAINS:

- \$500.00. 9 room house and 3 lots, good location.
- \$2,500. Fine house, all modern improvements and one acre of land.
- \$4,400. A 41½ acre dairy ranch, all well improved, fine location.
- \$3,350. A good dairy ranch, 42 acres, well improved. 8 cows, good separator and other farm implements. Home market for everything produced.
- \$1,200. 200 acres good timber land.
- \$1,280. 160 acres fine timber land.

If you don't see anything here you want, write and let us know what you want and we will try and get it for you. Write or call

COQUILLE VALLEY DEVELOPMENT CO.

COQUILLE, Coos County, OREGON.



HEUCKENDORFF'S SHIPYARD, PROSPER.

BANDON CONCERT BAND.

One of the organizations of which the town is proud is the Bandon Concert Band. The band is equipped with the finest set of instruments in Southern Oregon, and when it comes to playing they can deliver the goods. Open air concerts are given almost every week and they always have a large and appreciative audience. The present membership is as follows:

- Frank Bowker, Director.
- Clark Allison, 1st Clarinet.
- John D. Monroe, 1st Clarinet.
- Phil W. Pearson, 2nd Clarinet.
- Geo. P. Topping, 1st Solo Cornet.
- C. S. McCulloch, Solo Cornet.
- H. Manciet, 1st Cornet.
- T. W. Robison, 2nd Cornet.
- Ernest Boak, Solo Horn.
- Geo. Manciet, 1st Horn.
- Haldon Foss, 2nd Horn.
- Carl Tilton, 3rd Horn.
- J. L. Stitt, 1st Trombone.
- Fred Gribb, 1st Trombone.
- Jas. Lanont, 2nd Trombone.
- D. A. Patterson, Baritone.
- Wm. Tenbrook, Bass.
- H. Nelson, Bass.
- C. T. Bismarck, r. snare drum.
- Roy Gibson, Bass Drum.
- Geo. P. Topping, Gen. Manager.