

To Our Many Friends and Patrons GREETING!

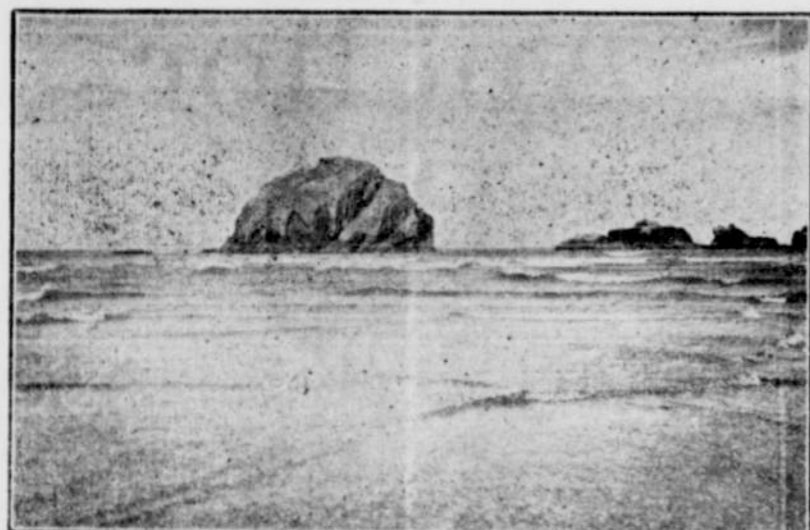


WE have about completed our first year's business among you, with entire satisfaction, and take this opportunity of thanking you for the success we have attained and the liberal patronage given us during

the past year. Our business has exceeded our highest expectations and we are flattered with the thought that **SQUARE DEALING TO ALL and PARTIALITY to none, BEST QUALITY GOODS and LOW PRICES** has been the key-note of our success. We are ever striving to obtain bargains for our customers and in the future it shall be our aim to give each and every one the same attention as in the past. The wise buyer wants the best that his dollar will buy. He doesn't want a dollar's worth that requires another 25c. to make it worth a dollar. He may be fooled into thinking he gets \$1.25 for his dollar--just once. If you like a straight deal, goods actually worth their price, latest things, lowest prices and everything guaranteed as represented, try this store.

Our line consists of everything usually carried in a general stock. We think we can show you the largest and best selected stock of Dress Fabrics, Muslins, Fine Linens, Summer Wash Stuffs, Hosiery, Ribbons, etc. ever displayed in Bandon--and you will find the price in every instance to be right. Our Shoe Department is by far the largest in town and we have shoes for every member of the family. We keep our Grocery stock fresh and carry a full assortment of choice and staple Groceries, Smoked Meats and Flour. We devote a great deal of attention to our Mens' Furnishing Department. You will find here the largest line of Hats, Shirts, Neckwear, Hosiery, Fancy Vests, Mens' and Boys' Ready-to-Wear Clothing. All kinds, sizes and prices.

O. A. TROWBRIDGE, Bandon, - Or.



SPHINX ROCK, BANDON BEACH.

Strawberries in Coos.

Mammoth Fruit of Luscious Quality.

Strawberries in Coos County?

Well we guess, some!

Can you imagine a berry that would not go to the bottom of an ordinary teacup, but remains suspended against the sides? Myrtle Point has produced such a berry.

Fourteen berries to a heaping quart box is what is shown in that measurement.

A case of 24 boxes running from 14 to 18 berries in the box, when you come to the wholesale department.

Berries that measure from 5 to 7 inches in circumference quite the ordinary.

A single vine with 160 matured and maturing berries were seen and the count taken by the writer, after many berries had already been gathered from it, and this was of the ordinary run of the patch selected at random.

H. B. Steward of this place has demonstrated what may be done in the berry line by developing the above results. His achievement reads a good deal like an Arabian Night

fairy tale but can be verified by any doubting Thomases.

Mr. Steward's patch lies on a sloping hillside. Standing at the lower side the visitor sees veritable wind-rows of berries lying tier upon tier, from the ruddy ripened fruit of remarkably fine flavor and texture to the drooping blossoms spreading its petals upon the ground. He began picking berries early in May and promises friends some of the fruit, freshly picked from his vines, for their dinner next Christmas. With favorable seasons and proper breeding and cultivation there is no telling what the soil and climate of Coos county may not accomplish in the berry line.

As for profit, take your pencil and figure it out--160 berries the way they run, counting 20 berries to the quart, should make at least two gallons of fruit; at 50 cents a gallon that vine is worth a dollar for a season. But cutting it down a few, call it worth but 25 cents; in the patch shown of about a quarter acre were 1000 plants, meaning at a very low estimate that it would produce in money \$250 a year. Is there any crop or any country to beat that?

Mr. Steward took land that a few years ago was considered almost worthless, but he has gone at berry production in a scientific manner and

will make it a success! He has secured pedigreed plants that have been bred up for years by specialists in berry culture and he thinks that further improvement may come to them from Oregon soil and climate. He has at present 22,000 plants of eleven varieties under cultivation, but four varieties of which are in bearing. Those producing are the August Luther, Magoon, Improved Mammoth and Eleanor. The others planted are the Glen Mary, Enormous, Crescent, Tennessee Prolific, Sample and Aroma. The August Luther and Magoon have shown the best results, thus far, but Mr. Steward expects to show something to equal or exceed them in other varieties another season. He moved onto his place but three years ago when it was covered with stumps and native growth and the development shown has been made when he was not busy at his trade as a contractor and builder. He has six acres that he proposes to leave in berries at no distant day, bringing him a steady and ample income. The Hood River and Willamette valleys have attained to some reputation in the berry line, but Mr. Steward is a pioneer in demonstrating what the Coquille valley may do. Other valleys will need to look to their laurels when the Coquille is developed and its reputation established in this industry. It will not, in Mr. Steward's instance, now take a back seat for any country in the world. But wait until there are hundreds of growers like Mr. Steward and it will lead them all where Oregon berries are obtainable.--Enter prize.

Souvenir Postal Cards

2 for 5c

at

**RICE'S
Jewelry Store,
Bandon.**

Wonderful Natural Resources in Curry County.

Port Orford, Or., It is stated with much truth that no county in Oregon is quite so interesting from many viewpoints as Curry, probably the least known and understood of any in the state. Sixty years ago it was a wilderness traversed by half-hidden trails; today it is a district of stage routes and trails, proud of one port only, where a coastwise steamer touches regularly on its from San Francisco to Coos Bay and return.

Lying along the Pacific ocean at the southwestern corner of the state, Curry county has gained a high degree of picturesque importance, but far and away beyond this last mentioned fact, is the county's acknowledged wealth of natural resources. Abundant in standing fir, cedar, pine, myrtle and oak, it is one of the richest timber sections on the Pacific coast. Mining prospects in gold, silver and copper, developed, undeveloped and those yet uncovered, place Curry county in line with some of the best known mineral districts in the northwest. There are paying placers on any one of the dozen or more small streams and rivers that turbulently tear ways through forest ravines on their windings to the sea, and back for miles along Rogue river are quartz prospects which need but development to prove their wealth, while the stream itself supports some of the most prosperous salmon fisheries on the coast. Within a half dozen miles of Port Orford, the port town of the county, gray granite and gray marble are found in immense deposits, the quality of the stone equalling any like product in the world's market. As a hunting and fishing preserve Curry county ranks probably, with any section in the northwest. It is a far cry from the present back to the days when In-

dians hunted the elk on forest trails and in river bottoms, but within the last month three elk were seen on the scrub land along Sixes river, 30 miles from the ocean.

Returning to Port Orford there are many interesting things to say. The little town lies at the side of the only natural harbor between San Francisco and the straits of Eel Fuca, Tichenor bay, or Ewing harbor, as it is nautically called, lies 10 miles south of Cape Blanco, latitude 42.44, longitude 124.30 west, and is a deep broad, capacious roadstead, having on the west and north a headland, perpendicular on the harbor side and 350 feet in altitude; it has the very best holding ground of any roadstead on the coast, composed of sand, loam and decomposed slate. A quarter of a mile outside of the extreme south point of the heads the water deepens rapidly and soon attains a great depth, the effect of which is to permit heavy ground swells setting in at the roadstead. From the south point of the heads, due east to the base of Humbag, a mountain peak, the harbor is four miles broad. It is exempt from all sunken dangers either in it or in its approach. It is equidistant between San Francisco and Puget sound and 220 miles south of the Columbia river. The land is high

and prominent effectually protecting the harbor on three sides. The heads are formed of most durable rock, with bold water from seven to ten fathoms immediately against them. The heads afford at hand all the material and of excellent quality with which to build a breakwater, which would have the effect of manning a bleak stretch of coast 600 miles in length with a harbor of refuge, which now it has none.

The war department has estimated that a breakwater 2,000 feet long could be constructed for less than \$3,500,000, which would give available protection to about 90 acres, with a depth of from 6 to 12 fathoms. A number of years ago congress appropriated \$150,000 for preliminary work on such a construction, which was never used. The assurance of a rail road down the coast from Marshfield to Eureka, thence through California to San Francisco over the Santa Fe leads the people of southwestern Oregon and masters of coastwise vessels to believe that the breakwater scheme will again be agitated.

Present conditions in southwestern Oregon demand suitable facilities, and so soon as they are obtained rapid progress will be made in a score of industries for which the natural resources of the country has so well prepared it. A wealth of the finest granite and marble will lay untouched; hundreds of square miles of valuable timber will stand uncut; quarter sections of land superbly suited to stock raising and dairying will remain covered with scrub growth; coalfields, prospected but undeveloped, will continue in their primitive state, unless adequate means to get the goods to market are supplied. The railroad is going to be built down the coast and the fact is gratifying. It will be the sure means of adding to the state of Oregon wealth which now lies hidden.



FUN FOR THE LITTLE FOLKS ON BANDON BEACH.