



Bandon Recorder.



Oregon Historical Society

Volume XXII.

BANDON, OREGON: THURSDAY, JULY 12, 1906.

Number 28.

BANDON, Coos Co. OREGON.

Hustling City by the Sea Has Many Advantages And is Surrounded by a Rich and Fertile Country.

Bandon is situated at the mouth of the Coquille river, in Coos county, Oregon, and less than half a mile from the Pacific ocean. The business portion of the town is located along the river front while the principal residence district is on the level plateau which rises abruptly a short distance back from the river. From many residences on this bluff a magnificent view of ocean and river is had, and its desirability as a place of residence, both winter and summer, is making for it a name that insures Bandon of being the popular "home city" of the county.

Bandon has a population of about 900 people and is growing rapidly. The increase the past year in population, postal receipts, new business houses and number of buildings erected has made a fine showing and the indications are that the town is just starting on an era of great development. The town has good schools and churches and is supplied with good pure water by a gravity system. The town as yet has no electric lights but two or three parties have such an enterprise in project and it is very probable that a lighting system will be installed in the very near future.

Not many years hence Bandon and adjacent territory will be the summer play ground of Southern Oregon. It has the most delightful cool, invigorating climate; it has the most picturesque, varied, romantic scenery to be found along the coast, and there is not in all its phenomena of air, sea or land, a solitary element of danger to life limb or health. Our section is free from destructive storms, cyclones, tornadoes, typhoons, thunder, lightning, earthquakes, extreme heat or cold, and is remarkably free from such insects pests as mosquitos, flies, gnats and ticks. Our lakes and streams abound in brook and lake trout, and the river affords good fishing at certain seasons of the year. Deep sea fishing can be indulged in by those who prefer that kind of sport. In the forests and hills can be found deer, bear, cougar, wildcats and other animals. Ducks, geese and snipe are plentiful in season and afford plenty of sport for those who prefer bird shooting. Camping out is rendered particularly pleasant by the glory of the surrounding scenery, the luxury of climate, the abundance of fish, game, rock oysters, clams, crabs and wild fruit.

Bandon is not dependent alone on her fine scenery and famous beach to

make a town. Our real future greatness will be brought about to a great extent by manufacturing industries and a big roll. The more people we have the greater will be the demand for all farm and dairy products, an incentive for hundreds more to cultivate our now non-producing lands and thus add more population and wealth to the section.

The advantages here for manufacturing are many. In the first place we have the most equable climate in the United States (according to government reports) and factories can operate the year 'round. Cheap fuel is a very important item to be looked after and we have it, both wood and coal,

tap this section, and there are many rumors concerning another transcontinental railroad building into Coos county. The Coquille river is navigable for 40 miles, and a number of boats make regular trips daily.

Following is a list of manufacturing industries now located here:

- Bandon Woolen Mills.
- Bandon Mfg. Co.
- Salmon Cannery.
- Broomhandle Factory.
- Wood pipe Plant.
- Bandon Foundry.
- Brewery.
- Match Factory.

There are numerous large sawmills in the vicinity of Bandon. At Parkersburg, 7 miles up the river, the Coquille Mill & Tug Co. have a mill with a capacity of 40,000 feet daily. At Prosper, about three miles from Bandon, are the mills of the Prosper

Adjacent to Bandon is an unlimited supply of timber suitable for pulp and paper making, and a pulp and paper mill will probably be built here. Furniture making is also an industry that would pay well.

Bandon is one of the progressive towns of Oregon; not a large town yet, but one that is making a steady and substantial growth. A town with a future? Yes. Nature is kind to Bandon. Situated within almost a stone's throw of the majestic Pacific, the great open highway insures us the cheapest of transportation facilities. At her feet is the beautiful Coquille river which flows through one of the garden spots of the Pacific northwest—the Coquille valley. River boats ply up and down its placid waters for a distance of 40 miles from the ocean, giving the inhabitants of the entire valley easy access to the

COOS COUNTY IS WELL KNOWN.

Best Advertised Section in Pacific Northwest the Past Year. Immigration and Capital Coming.

Much has been written about Coos county, Oregon, in recent years, and just now it is probably the best advertised section of the state. Coos county is generally referred to on the outside as "Coos Bay" or the "Coos Bay country;" especially is this true of people who have never visited this favored bit of Coast country. But it matters not by what name this section is known, the all important feature is to spread the story of its magnificent resources, its climate, soil, and other manifold advantages, to as many people as we can and in as many ways as we can. The home-seeker looking for a more congenial climate in which to make a home, or

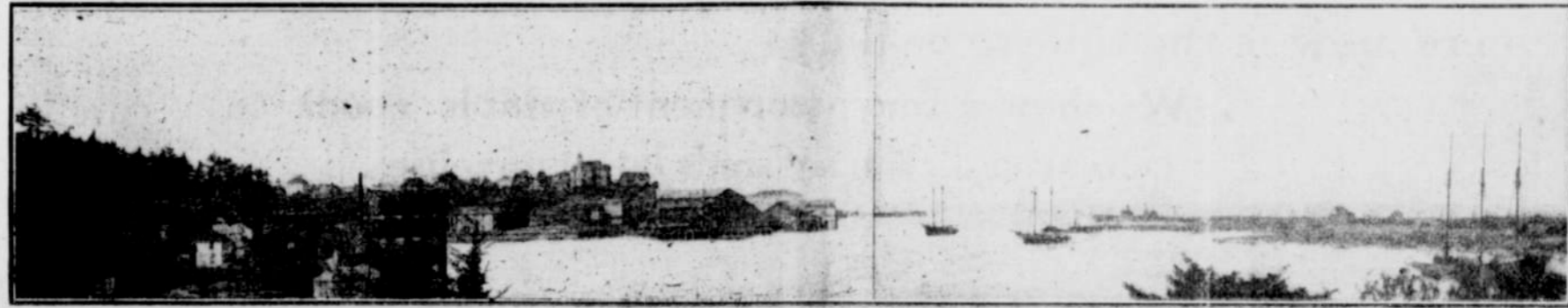
water, several steamers making regular trips from San Francisco and Portland, and several stage lines from the railroad in Douglas county, but we are out of the beaten path of travel, and people looking for locations hesitate to make the trip on account of the sea voyage or the hardships of staging it.

However, regardless of these obstacles, the people are coming—hundreds of them—and from present indications the population of Coos county will be greatly augmented this year. The fact that the Southern Pacific is now building a railroad from the main line at Drain into Coos county, is serving as an impetus for people to come and get a foothold before the big rush that is sure to follow.

And those who come will not be disappointed—that is, those who come with the intention of going to work and help develop the wonderful resources of this section and making the same effort to win success that is required to accomplish this end elsewhere. Those who expect to find golden eagles growing on trees, and no effort required to fill their pockets, may be disappointed, but that is not the class of immigration we want. We want men to develop our coal and timber resources, to build factories and mills, and to clear our rich river bottom lands that they may become productive.

The development of our natural resources is yet in its infancy. Our timber lands and our coal lands offer a great range in the field of development. Our rich valley lands are only partially developed and the glades and uplands are practically untouched, but some day will be found valuable for some branch of agricultural pursuit. The tide of development is now turning and many strangers are coming in to investigate the possibilities of this old, yet new country. When it becomes better known that here is a small empire where crops never fail, where drought never comes, and the cooling breeze of the grand old Pacific causes the warmest summer days to be pleasant, where the fresh pure air makes the population celebrated for its health, then will we see the old Coquille valley a hive of industry and pretty homes and well-kept ranches spring up where now is naught but stumps and brush and fallen timber.

The railroad from the interior is all that is needed to make Bandon a great summer resort.



BANDON, Coos County, OREGON.

and indications of oil. The whole country is underlaid with coal and the development of this industry hardly commenced. In many places where development work has been done, three and four strata from three to six feet thick, overlay each other. These coal lands lie immediately upon, or so close to the Coquille river, that the coal can be put aboard the vessel at slight expense.

We have good transportation facilities with California ports, a fleet of steamers and schooners being engaged in the traffic. The Southern Pacific is building a coast railroad in order to avoid the Siskiyou mountains in Southern Oregon. This road will

Mill Co. and Carman & Crites, with a capacity of 55,000 and 65,000 daily. Near town are also located R. H. Rosa's sawmill, E. Dyer's sawmill, Hunt Bros.' sawmill, Langworthy & Osborne's sawmill. E. Dyer has a shingle mill south of town, and the Bandon Manufacturing Co. is making a specialty of white cedar shingles.

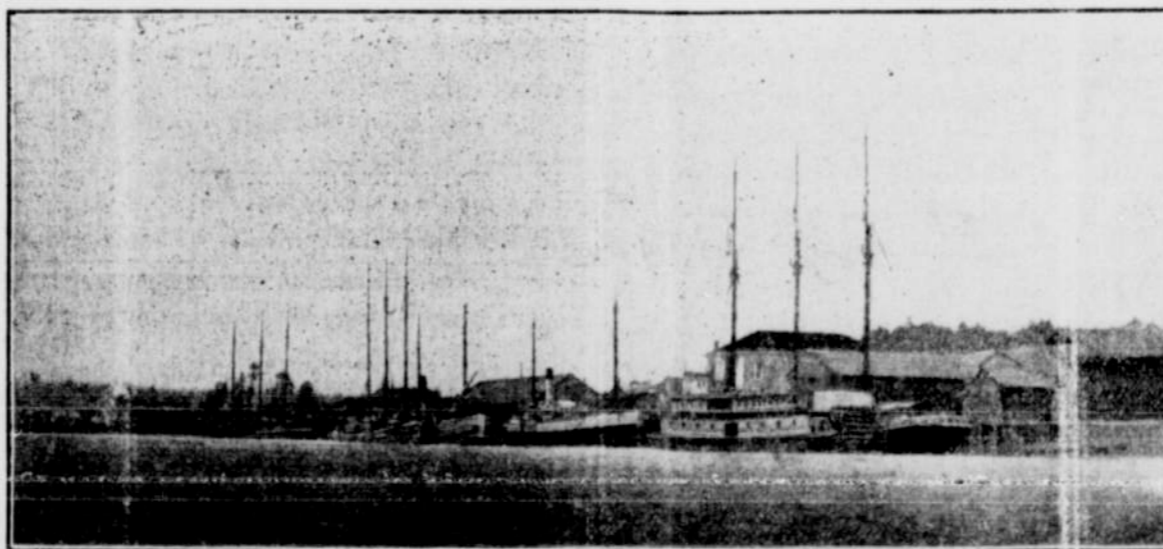
The Cody Lumber Co. will build a large saw mill with a capacity of 75,000 ft. daily, and have it in operation by March 1st. It is reported that this company will also operate a sash and door factory.

Stock is being subscribed for a \$200,000 pulp and paper mill.

sea with their products. The coast railroad survey passes through East Bandon, and it will not be many years until the overland trains from Portland to San Francisco will be stopping at Bandon station and unloading thousands of tourists during the year to feast on the scenic delights of Bandon beach. There can be no monopoly on the transportation business at Bandon—we will have too many outlets, and thus our exports and our imports will be handled at a minimum of cost.

The population of the town has been increasing steadily, and you find no "for rent" signs in Bandon. Our buildings are always well filled and

the capitalist looking for profitable investments, will each find that Coos county is pregnant with opportunities. They will find that this is not a new country in one sense of the word for we have men and women with families who were born and raised here, but it is yet a new country in so far as the development of its latent resources are concerned, but this is easily and satisfactorily accounted for. As yet the steel bands of the railroad have never penetrated our deep forests and rich valleys to give us communication with the outside world, or rather, to put the outside world in touch with us. True, we have fair transportation facilities by



VESSELS LOADING AT BANDON WHARVES.



BANDON BEACH. THE SCENIC BEACH OF OREGON.

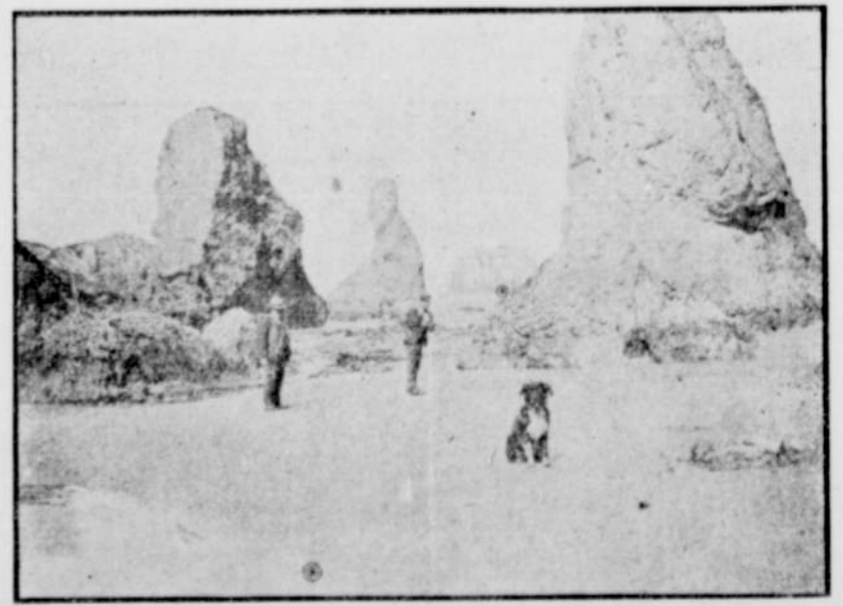
It is estimated that there is ten billion feet of merchantable timber in Coos county. The timber growth consists of fir—red, yellow and white, red and white cedar, spruce, hemlock, yew, myrtle, maple, ash, white and live oak, alder, dogwood, madrone, chinquapin, and numerous smaller growths. Thousands of cords of white cedar are shipped from Bandon to San Francisco for the manufacture of maces. It sells for from \$6.50 to \$7.00 a cord. It is also a valuable wood for finishing purposes and ship building. The myrtle is a beautiful graine wood and takes a magnificent polish, and is valuable for furniture making.

The principal timber resources of the county are on the Coquille river,

paying interest on the money invested. The financial standing of the city is excellent. Its debts have all been paid in full—in fact it is the only town in Coos county that is out of debt and has money in the treasury.

The waters of the Coquille and its tributaries teem with the king of all food fish—the salmon—at certain seasons of the year. There is a large salmon cannery at Bandon and another at Prosper, three miles up the river. The two canneries last year put up about 19,000 cases of salmon and distributed about \$14,000 to the fishermen along the river.

The industry here is the second largest in the state—being next to the Columbia. Over \$1,300 in licenses was paid to the state last year. A salmon hatchery is to be established by the state on the Coquille river this year.



BANDON BEACH. THE SCENIC BEACH OF OREGON.