

Attention!

Portland Area Tribal Members:

A meeting will be held on Nov. 5, 2007, at 6 p.m. to discuss the future of the Portland Area Office and the services it provides to the PDX membership. Tribal Council has left it up to the membership to decide the fate of this important institution. If you would like to contribute to the discussion, make recommendations about the services and cultural programs currently offered and/or future services that might be offered in the Portland Area, or if you have never been to the Portland Office and wish to stop by, we would love to have your input. Since the Portland Office is a family, we will celebrate our meeting with a potluck dinner.

Our goal is to present Tribal Council with a detailed action plan that outlines the future of the Portland Area Office and presents a cost-effective analysis for which the Tribe can continue to operate the satellite office. We will also be seeking members for a committee that will function to find a suitable permanent office for the Tribe to consider purchasing in accordance with Tribal Council's stated goals. Portland Area members are preferred but all Tribal members are welcome.

The Portland Satellite Office is located next to the Ross Island Bridge at 3312 S.W. Kelly Ave., Portland, Oregon 97201

Questions or comments, call 503-235-4230.

Tribal members receive Potlatch Fund grants

Grand Ronde Tribal members Chuck Williams and Dara Dickinson are recipients of \$1,000 each from the Potlatch Fund's 2007 Native Arts grant cycle.

Funding for the 2007 cycle was provided by the Ford Foundation and grants totaling \$37,500 were given throughout the Northwest.

Williams, who lives in The Dalles, received a grant to produce the 2009 version of the "Undamned River People" calendar, which features portraits of Native Americans of the Lower Columbia River Basin.

Dickinson, who lives in Willamina, received a grant to support the artistic development of her designing Native regalia with equipment, tools and supplies.

Home For Sale

28475 McPherson Rd.
Grand Meadows Lot # 32
Contact David Riggs at 503-879-5864

Home For Sale In Grand Meadows

Grand Meadows
28475 McPherson Road #35
Grand Ronde, OR 97347

Asking Price: \$73,000 reduced price for paint and carpet allowance.

3 bedrooms, 2 baths, 1,400 square feet, large yard, extra parking, lots of natural lighting, Master bedroom has full bath and walk-in closet, kitchen has an island and pantry, outside storage unit, large concrete patio, room to build garage and still have extra parking.

If you are interested in purchasing or viewing the property, call Denise Harvey at 503-577-2860.

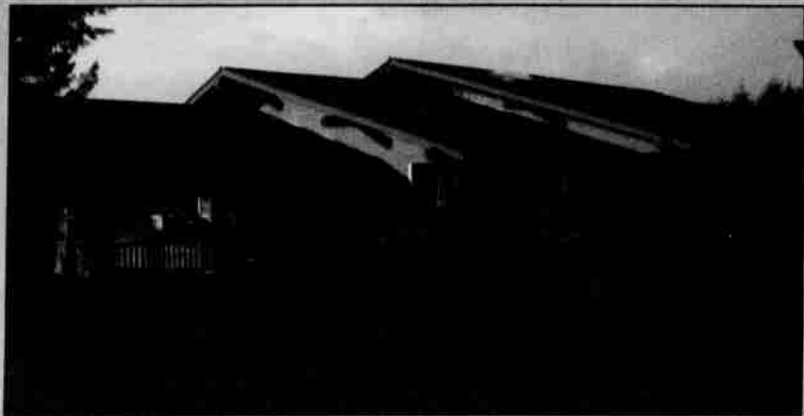


Elder Foster Program

"A Place To Call Home"

Our Elder Foster Care lodges are committed to offering quality care to our Elders and to help them remain as independent as possible, while providing the personalized assistance they need. At our lodges, a wide range of services are available in a comfortable setting where privacy is respected and maximum independence is supported.

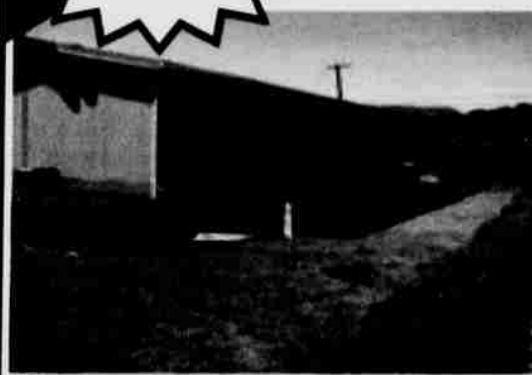
For information, contact Joan Englund, Elder Foster Program Director, at 503-879-1694.



Manufactured
Home for Sale

A Homeownership Opportunity for you in Grand Ronde!

Offers to Purchase will be accepted from CTGR Tribal members for the home until noon on Monday, October 1, 2007




Grand Ronde Tribal Housing Authority

Call GRTHA for offer forms, maximum offers accepted will be \$82,650. Multiple maximum offers will result in a lottery drawing for the successful buyer. For viewing phone (503) 879-2401.

28475 McPherson Rd #3
• 1998 Marlette Doublewide
• 1404 square feet
• 3 bedroom / 2 bath

Coastal SIGNS

A Full Service Electrical Sign Company

DESIGN SALES SERVICE
REPAIR INSTALLATION NEON

42825 SW Fort Hill Road
Post Office Box 1243
Willamina, Oregon 97396
Office 503-876-8994 • Billy Bobb - Sales 503-510-1190
www.coastalsignsllc.com