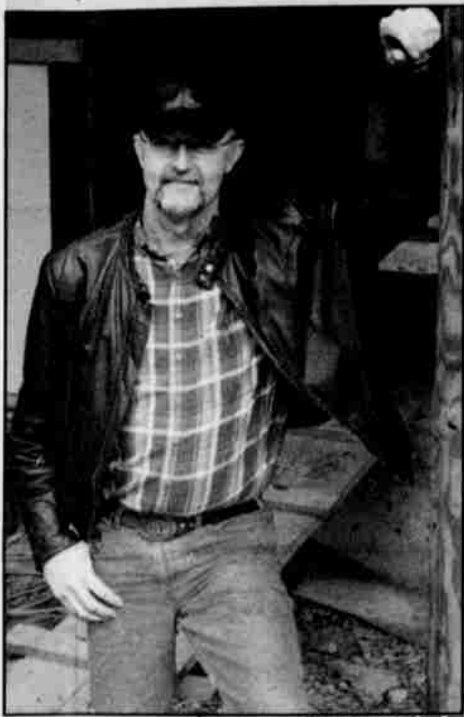
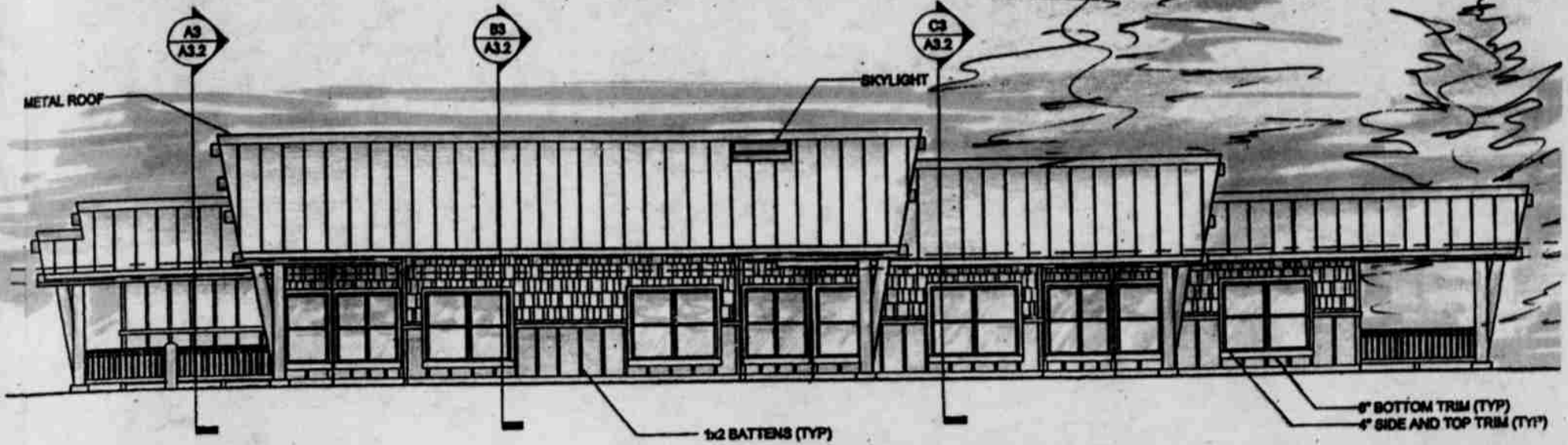


Artistic Drawings courtesy of Duane Hussey, Development & Construction Coordinator for the Tribe.



If You Build It... Above is the architect's take on what the Elder's Foster Care homes will look like from the front; below are the interior layouts showing an assortment of amenities, from a centrally located dining area, laundry and kitchen to adjacent living and game rooms. At right is a picture of what one of the buildings looked like early in April. At left, Duane Hussey, from the Tribal Housing Department.

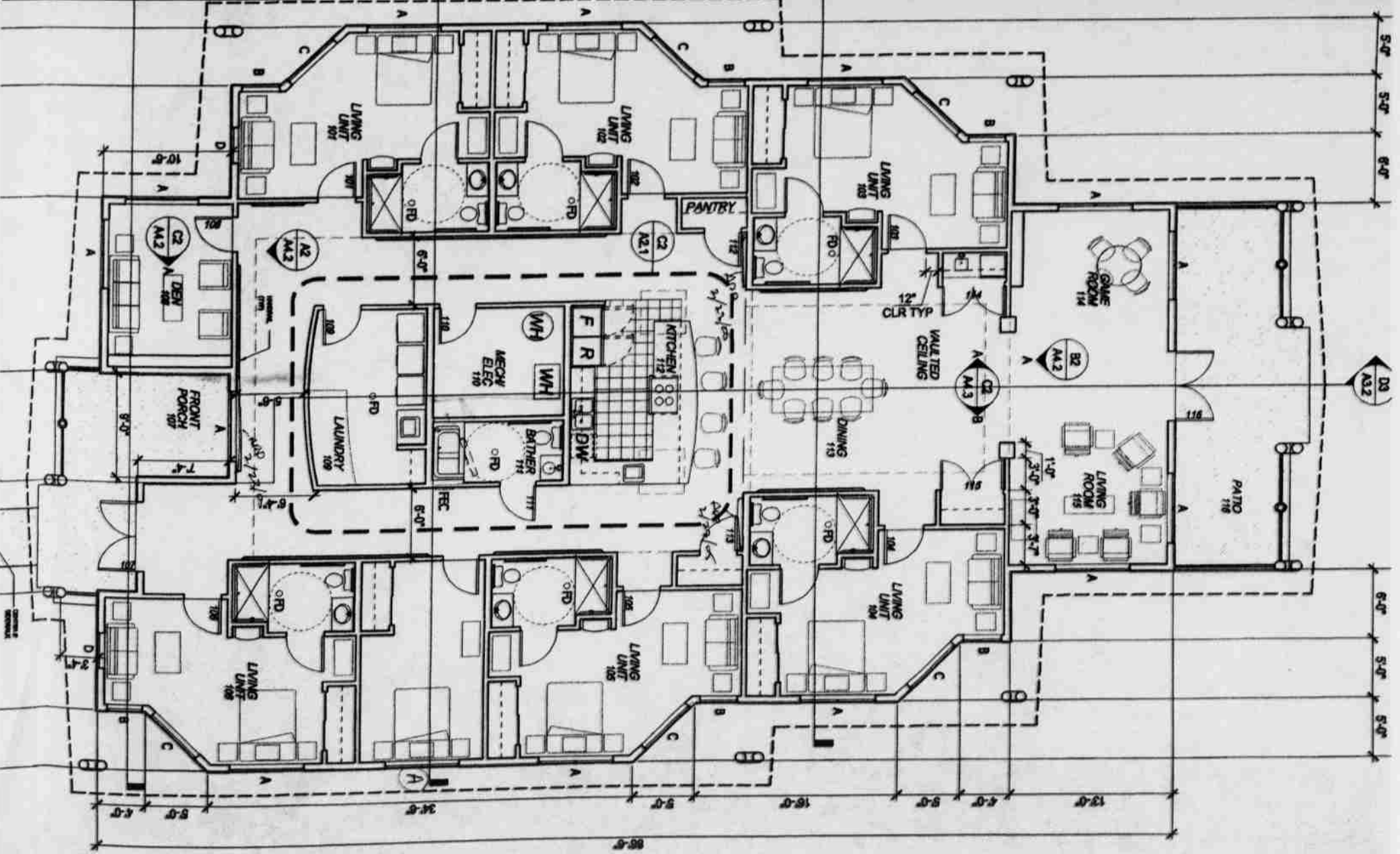


Photo by Toby McClary

Photo by Ron Katten