

Kwelth Tahlkie Update

CULTURE BOARD MEETING ANNOUNCEMENT

Kwelth Tahlkie Culture and Heritage Board will hold its monthly meeting at 10 a.m. on August 8 in Conference Room A (upstairs) in Spirit Mountain Casino. Tribal members are always welcome to attend.

The August 8 agenda includes: closed interviews of Board Member candidates, first hour; Executive Director hiring progress report; and discussion of past and upcoming cultural activities.

POLK COUNTY MUSEUM VISITORS WELCOMED

Representatives of Polk County Historical Society visited the tribal offices recently inviting collaboration on the exhibits for their new museum. The museum is a two-story structure under construction at the Polk County Fairgrounds in Rickreall. Visiting the Kwelth Tahlkie Culture and Heritage Board office with a copy of the museum's floor plan were Georgia and Howard Weldfang, Nancy Greening and David Jacob.

Heritage Board announces Logo Contest

The Kwelth Tahlkie Culture and Heritage Board is seeking two (2) new logos for use by the Board. A contest is being held to find these logos.

The contest will be open to all Native American youth in two categories. One winning logo will be picked from each. The categories are: grades K-8 and grades 9-12. A prize of \$100 will be awarded to the winning student in each category.

The deadline for the competition is

Friday, August the 28. Designs should reflect the Culture and Heritage of the Confederated Tribes of Grand Ronde.

All applicants are encouraged to provide their personal information at the time of submitting their designs on a separate piece of paper.

Submissions should be sent to:
KTC&HB, c/o Kathleen Mitchell
9615 Grand Ronde Road
Grand Ronde, OR 97347

Discovering uses for native plants

By Shawn Hostler

When your grandpa was sick were there certain plants he used to feel better? Did your grandma use certain plants in a home remedy? Did your dad use such and such to smoke meat? When it comes to the traditional uses of plants, you may know more than you think.

I remember my grandma telling me that Indian tea grew up the hill, near the well on the allotment. And my mom telling me that her grandma used a mustard on cuts to draw out the redness, the infection.

I would like to hear from you on any work already done, sources of information, ideas you have or projects I can help with concerning uses of native plants. All this information will be part of the Tribe's Cultural Resources data base. We hope that this information will be used as a reference for tribal members, families, educators, and others. Call Cultural Resources at 1-800-422-0232 or 879-2319 with your ideas and suggestions.

SOME USES FOR NATIVE PLANTS: Remember, always know for sure what you are picking or using from the woods.

• There used to be only one kind of native blackberry. The *Trailing Blackberry* or the *Dewberry*. It is low growing along the ground. It has many medicinal uses and is delicious to eat.

• *Oceanspray*, *Creambush*, or *Ironwood* can be used for digging sticks, spear and harpoon shafts, bows and arrow shafts, as pegs for construction, inner bark scrapers, cattail mat needles and recently, knitting needles. It can also be used as a blood tonic to help combat diarrhea, especially in children. The wood is made even harder and stronger by heating it over fire. Afterwards it was often polished with the plant Horse Tails.

• *Horse Tail*, *Scouring Rush*, and *Giant Horse Tail* are a very ancient group of plants. They grew to the size of trees when the dinosaurs roamed the earth. There are four different species. All have a high amount of silica. They can be used for polishing wood or soft metals, eaten early in the spring (but should not be eaten in large quantities), and making a yellow dye. The most impressive use is that when boiled down to a lotion, Horse Tail can be used as an astringent to cleanse and stop bleeding of external wounds.

• Got a sunburn? You could have used a salve of *Western Hemlock* pitch and deer tallow to prevent it. Hemlock has many uses such as a dye, a poultice or poultice coverings, liniments and many others.



SPIRIT MOUNTAIN TRIBAL MEMBER EMPLOYEE PROFILE

Tersa Stewart

Title: Safety/Employee Development Assistant

Hire Date: "I worked for SMDC from 1994 to 1996, then I came back to work here in August of 1997."

Family: Parents, Roger and Darlene Aaron; Grandparents, Orville and Ramona Leno and Jim and Janice Aaron; Brother, Trevor Aaron.

Residence: McMinnville

Background/Education: Graduate of Willamina High School; various computer trainings.

Duties of current position: "I assist Deb Childers, Safety Specialist, with FMLA and Worker's Comp. filings. I also help with the Employee Development Team as needed."

Joys of the job: "I love the team environment. We really are a team."

Most interesting thing about the job: "Basically, learning all the processes for FMLA, Worker's Compensation, and trying to maintain safety. It helps that I am attending the Portland State University's Human Resources generalist course. It makes things a lot easier."

Hobbies: Crafts, cross-stitching, embroidery, painting, and poetry.

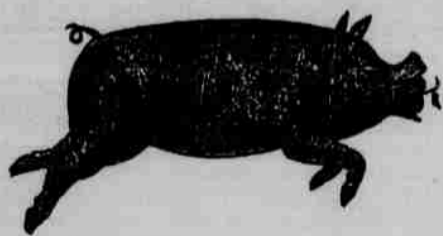
Philosophy or personal creed: Everything happens for a reason.

What brought you to working for SMC: "I started working for the Development Corporation, and later took this position at Spirit Mountain Casino when it came open."

Misc: "A majority of my family works at SMC and the Tribe, I consider the Casino to always be part of my family and hope that all the great work from the current employees continues and makes a future for my kids and family that we would not have otherwise."



AND THIS LITTLE PIGGY WENT TO SPIRIT MOUNTAIN.



Come party Hawaiian style August 7th & 8th at Spirit Mountain Casino. On Friday, groove to the live Caribbean music of *Curare* (6 p.m.-10 p.m.), and have a chance to win a Hawaiian vacation. Those in their beach clothes are eligible to win additional prizes. On Saturday, experience a real Hawaiian luau along with traditional music and fire dancing as performed by *Polynesian Moments*. Eat pig, learn the hula, and have another chance at winning a Hawaiian vacation. Vacation drawings are at 11 p.m. each night. Drawing tickets handed out 5 p.m. until the drawing. Must be 21 and present to win. Spirit Mountain Casino, Hwy. 18, Grand Ronde. 1-800-760-7977. www.spirit-mountain.com



HAWAIIAN SURF PARTY WEEKEND