

# ~ Culture & Heritage Language Lesson ~

## Ichishkiin ~ Warm Springs

Practice "Hide & Seek" with your family, in your language. Use the lesson plan to add new words in the phrase.

### Lmq'ink.

Ititámak pútmtyaú.

Áwaqitnk \_\_\_\_\_

Q'ínunk

Áyaxnash!

Mna iwachá?

Awiíamachnk \_\_\_\_\_

Q'ináti.

Iyáxanash



## Kiksht ~ Wasq'u

Be ready for the spring, the time to dig will be here sooner than you expect it to be!

**GawaxemdiXBet Aqdulaba  
Wixbama Itxlem.**

**GawaxemdiXYamt,  
Isq'ipast Stumt.**

**Ibiaxi yumt.**

**Itqwał tğumt**

**Itdwak tğumt**

**Itchxwan tğumt.**

**Itgamwa tğumt**

**Dan Yumt?**

**GAWAXEMDIXBET,  
kánawi dan yumt!**



## Numu ~ Paiute

Here is an example of how you can use your stuffed animals to practice your language.

Hee esoo?

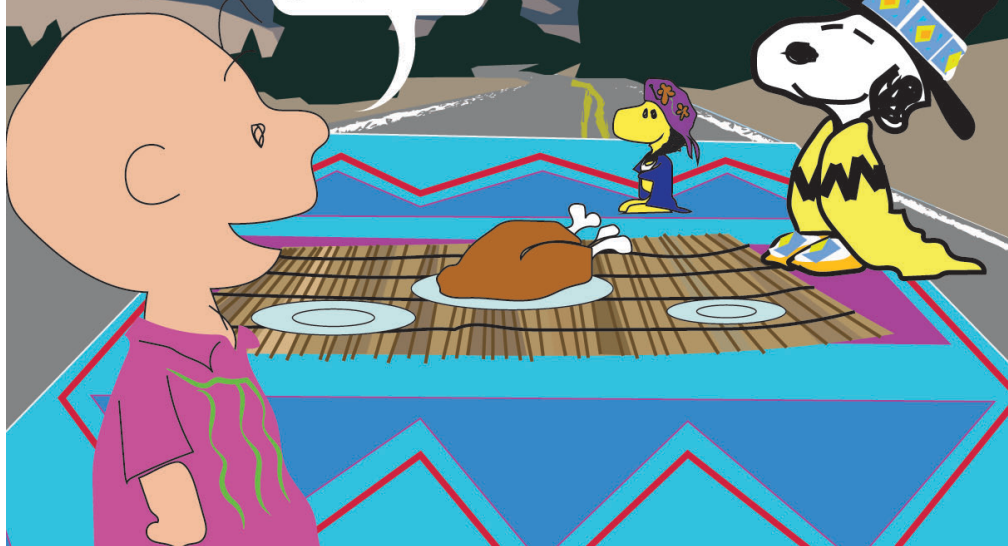
Esoo sadu'u.

Ha'yoo nane'a?

"Snoopy" mee nane'a.

Ki Micky Pongaadze.

Unuetse!



## Numu ~ Paiute (continued from lower left)

### PROCEDURES:

#### 1. Introduction:

Take the stuffed animals out of the bag, hold them up, and say their names. Then set each animal down in front of the class. Let the class repeat the names of the animals.

Esoo sadu'u.	This is a dog.
Ya'a kammu.	Here is a rabbit.
pongatze	mouse
pongedya	skunk
pataki	raccoon

#### 2. Implementation:

##### Take One

Hold up a bag with the stuffed animals in it. Tell each student to take one. Ask them what it is. Then go around the class and do a chain drill, with each student asking another students what their animal is.

Sumuoo kwuoo.	Get one.
Hee esoo?	What is it?
Esoo pongatze.	This is a mouse.

##### Put it Back

Tell each student to put their stuffed animals back into the bag.

Mago'o wi mu toonow.	Put them in the bag.
Mago'o wi a tuku.	Put it in the bag.
Punowse mu tuku.	Put them all back.

##### Describe It

Ask questions about the color, size, and names of the stuffed animal the a student has. Have them answer. One-word answers are just fine. When the students are ready to speak more, have them ask questions to each other about what the stuffed animal looks like.

##### What Color is It?

Ha'oo tabu'a?	What color is it?
Esoo toha kammu.	This is a white rabbit.
Oha puhu tooa'a.	It's a yellow baby duck.
Unuetse!	So cute!

##### Big or Little?

Esoo paba'yoo puute tutse'yoo?	It is big or little?
Ya'a paba'yoo sadu'u.	Here's a big dog.

##### Long or Short?

Esoo naka ooduooyoo puute meetse'yoo?	Are the ears long or short?
Nagutza uduoo naka ka'yoo.	It has very long ears.
Esoo meetse naka ka'yoo.	It has short ears.

##### What's Its Name?

Ha'yoo nane'a?	What's its name?
"Snoopy" mee nane'a.	Its name is "Snoopy."
Ki Micky Pongaadze.	It's not Micky Mouse.

## ~ Student lessons for the classroom ~

### Numu ~ Paiute

#### PAIUTE LANGUAGE PROGRAM LESSON PLAN

UNIT:	ANIMALS UNIT	BY:	Shirley Tufti, Pat Miller, Alice Harman
LEVEL:	Beginning	FOR:	Home-Based Learning
LESSON:	Stuffed Animals	TIME:	15 Minutes at a Time

#### GOAL:

For students to learn the names of some common domestic and wild animals, and to review colors, sizes, and names.

#### OBJECTIVES: The student will be able to:

1. Follow directions to take a stuffed animal out of a bag and put it back, for full control.
2. Ask and answer "What is it?" for full control.
3. Ask and answer "What color is it?" for partial control.
4. Ask and answer "Is it big or little? Long or short?" for full control.
5. Ask and answer "What's its name?" for partial control.