



Spilyay Tymoo

Coyote News, est. 1976

August 21, 2013 Vol. 38,

August - Shatm - Summer - Shatm

P.O. Box 870
Warm Springs, OR 97761

ECR WSS
Postal Patron

OREGON HISTORICAL SOCIETY
1230 SW PARK AVE.
PORTLAND, OR 97205

U.S. Postage
PRSR STD
Warm Springs, OR 97761

50 cents

School work nearing next phase

Construction work on the Warm Springs k-8 school is progressing at a good pace, and is a slightly ahead of schedule, said Rick Molitor, school district superintendent.

The leveling work at the 22-acre site is nearly done, and the water and electrical pipes are now on site.

The foundation and footing work is scheduled to start by the end of September or early October, Molitor said. "We are on schedule to open in the fall of 2014," he said.

Meanwhile, a ground-breaking is scheduled for this week at the site of the new Madras High School football stadium, athletic complex, and performing arts center. The ground-breaking at the stadium site is scheduled for 10 a.m. this Thursday, August 22.

At the Warm Springs k-8 site, about 25 workers are on hand, including a number of tribal members. To learn about employment opportunities at the site, call Job Cre-



The water lines arrived on the site last week.

Dave McMechan/Spilyay

ation and Development at 541-553-3324.

With the levelling work nearly done, the outline of the new school is coming into view.

The athletic field will be located on the large flat area along Chukkar Road. The roadway into the parking lot is visible next to the construction manager trailer. The

school building itself will be located beyond the parking area toward Tenino Road.

School district voters approved the Warm Springs school, and the new athletic complex and performing arts center, in the spring of 2012. Tribal member voters approved the \$20 million k-8 project that summer. The tribes are sharing the cost of the building, and acquired a \$6.8 million loan guaranty from the USDA for funding.

School start Sept. 9

The first day of school for students in grades 1 through 6, and grade 9 at the high school is Monday, Sept. 9. Students in grades 7 and 8 at the middle school, and 10 through 12 at the high school, start on Tuesday, September 10. Kindergarten students start the week of Sept. 7.

— Dave McMechan

9-1-1 matter at Council

On the reservation, when you call 9-1-1 from a ground line, the call goes directly to Warm Springs dispatch.

When you call 9-1-1 from a cell phone, the call first goes to an off-reservation dispatch center, such as at Condon or Bend. The call is then routed to the Warm Springs dispatch center, adding some time to the emergency response.

The question of dispatch, and fire and safety response time, came up earlier this week at Tribal Council. Charlotte Herkshan requested the subject be on the Tribal Council agenda.

Mrs. Herkshan lost her home to a fire in July. With the home went all of her beadwork and beads, family photographs, and personal items of loved ones. "I lost everything," Charlotte said. The fire response time, she said, was over 20 minutes.

Stan Suenaga, Public Safety General Manager, said there have been some issues at dispatch that are being worked out through training and other means. "We're reviewing tapes, and making sure all policies are being followed," he said.

Charlotte and Councilwoman Evaline Patt said the emergency response time has been an issue at least since the early 1980s. "And nothing has changed," Charlotte said. Public Safety needs to improve the emergency response process, said Council Chairman Austin Greene, "so we can avoid further loss of homes."

See 9-1-1 on 12

Tribes' Willamette Valley project approved

The Confederate Tribes of the Warm Springs is pleased to announce the acquisition of a 277-acre property, the Red Hills Conservation Area, through the Willamette Wildlife Mitigation Program.

The Bonneville Power Administration provides funds as mitigation for loss of wildlife habitat from inundated acres from the construction of federal dams within the Willamette Valley.

In 2010 the BPA and the State

of Oregon signed a landmark agreement to jointly protect Willamette Basin wildlife habitat through creation of the Willamette Wildlife Mitigation program.

They developed a memorandum of understanding (MOU) in 2012 that included involvement by Confederated Tribes of the Warm Springs, the Siletz Indians and Grand Ronde tribes, the City of Eugene, Metro, non-governmental organizations like the Nature Conservancy, and other interested par-

ties. This collaborative public process led to a development of criteria to determine properties that would best benefit from this conservation strategy through land acquisition or establishment of a conservation easement.

This is similar to the agreement that was developed for the purchase of the Pine Creek Conservation Area in the John Day Basin.

In 2012 the Confederate Tribes' Branch of Natural Resources identified the Red Hills

property located within Yamhill County, in the Willamette Valley, as a property that met the developed MOU conservation strategy for mitigation lands.

Through the review process as outlined in the MOA, the Confederated Tribes presented this proposal in 2013. The proposal was ranked number one out of 16 for ecological values and funding.

Please see RED HILLS on 8

New museum feature points out little-known aspects

The audio tour guide greets the visitors as they approach the museum, saying:

The Museum at Warm Springs shares the beauty of the culture, traditions and history of the Confederated Tribes of Warm Springs... From the inside of the museum to the outside, the museum tells a wonderful story...

The audio narration is provided through the visitors' smart phones, I-phones or cell phones.

The tour guide is Debbie Stacona, museum development officer.

Native music provides the background, as Debbie continues the tour:

Every detail of the museum building has a story. The architects worked closely with the tribal community to tell our story through design.

The first feature you see is the creek leading you up the walkway to the museum, as water is essential to all living things. Because of the importance

of water we placed the stream at the beginning of your visit...

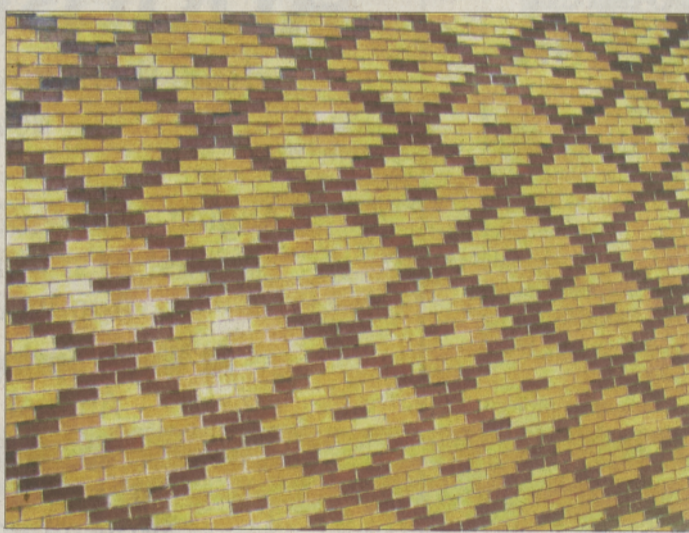
Blue floor tiles continue the image of the stream into the museum, through the building and continuing outside again to the central patio area.

But before entering the building, the tour guide continues her narration:

The fascinating brickwork around the building walls is an actual huckleberry basket design, a basket we have in our collection.

Our elders said, 'Not all things are perfect,' so when making artwork, beadwork or basketry, they intentionally placed a wrong color in the design. In the brickwork of the building, there is an intended flaw in the design—somewhere. See if you can find that brick out of place...

Finding the out-of-place brick is very difficult; Deb finally noticed it after working at the museum for six



Dave McMechan/Spilyay

The brickwork of the museum walls is in the design of a huckleberry basket that the museum has in its collection. Somewhere on the building (not in this picture), one brick in the design is intentionally out of place.

years. Some other segments from the tour narrative, still before entering the building:

The circular lava rock wall at the entrance to the museum resembles a drum. Drums have been and remain an

important part of Native culture and ceremonies.

Above the entrance is the word Twanat carved in granite. In the Warm Springs language Twanat means to follow, such as to follow traditions and culture.

The brass door handles on the entrance doors resemble the feather bustle on men's regalia. As you tour the museum grounds, see if you can find more places where the feather bustle shape is used...

The visitors will access the audio tour on their phones at five stops around the museum. Deb worked with the OnCell service in creating the audio tour.

"We can't have tour guides for every group of visitors," she said. "OnCell is one way of sharing all these added stories of the museum with the visitors."

The project was made possible through a grant from the Portland General Electric Fund.

See MUSEUM on 7



GET YOUR KICKS ON HIGHWAY

26

Warm Springs Oregon

Hot August SUMMER NIGHTS!

Win a 2013 Ford Mustang or \$15,000 Cash!



See page 12 for details.