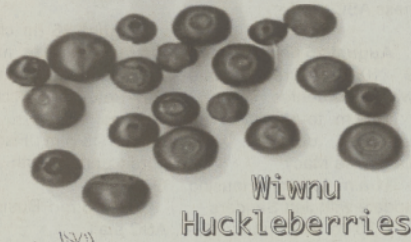


THE CONFEDERATED TRIBES LANGUAGE LESSON

Ichishkiin



Wiwnu
Huckleberries



Lup'ui
Cedarbark Basket



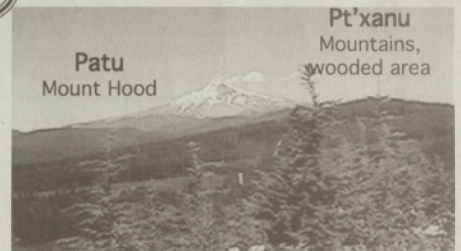
Anpsh
Big willow basket

Sapalwit
Thanksgiving feast

**Wiwuwaash iwa tlaaxw
pt'xanupa pänkni Patuna.**
The huckleberry patches are all around Mt. Hood wooded areas.

**Lup'ui atash wiwapasixa atash
ku atmaanixa wiwnuna.**
We use cedarbark baskets when we pick huckleberries.

**Awasalwixana wiwnu wat'l
ikwn auku tmaanit namilaiki
wiyanaknuwitash.**
We have thanksgiving feast for huckleberries before we pick to stor for our use.



Wiwuwaash
Huckleberry Patch



Cultural Arts & Crafts for Family @
The Culture & Heritage Department Cultural Room
Tuesday's & Thursday's 1:00pm to 7:00pm
Schedule is subject to change.
Please call for information and list of materials needed.
C&H 553-1543 or 3424

Kiksht

Qadamt amshuya?
Where are you all going to go?

Anshuya itkaágwax-yamt.
We're going to go to the mountains.

Dan kuba amshgiu~a?
What are you going to do there?

**Shangi naígima dukst aga idunayax
Highrock ba.**
A little while ago, someone said the huckleberries are ripe at HighRock.



Qngi aish alma amshuya?
How are you going to go there?
I-átmubil ngi alma anshuya.
We're going to go by car.

Amtnitla tun iishkálímax patl idunayax ngi.
Bring me three big baskets full of huckleberries!



**Kwtkwat anshkduxama
idunayax.**
We're going to pick huckleberries.

Dukst chi aga idunayax?
Are the huckleberries ripe now?

Qdash ashmsh~útkka itskíntwamax kwab:
Watch out for the bears!



K'aya sqw'ap amuya itskíntwamax-ba.
Don't go near the bears!

N u m u



U kawona mabetsabel!
Get your Baskets Ready!



Kawona!! Kawona!!
Baskets!! Baskets!!

Hanano ta memeowkwe?
When are we leaving?
Meno'o
Now

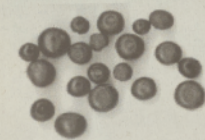
Ewow tsapoka ka sa'a kwitu.
Get lots of Berries for later use.

Te tuammu ika pesa sopedya.
Our children love to pick berries,



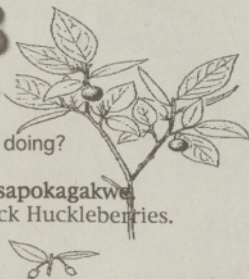
Ya tabeno pesa tabedooapunne!
Today is a very nice sunny day!

Noyoona nanuma pesa natumasina.
This a fun family outing for everyone.



Hemma u hane?
What are you doing?

Tame togabonoa tsapokagakwe.
We're gonna go pick Huckleberries.



Onoo yise ume wutsumekwe!
So they can get full of Berries!



Hano u me'a?
Where are you going?

Tame kibawitu meokwe!
We will go to the mountains!

