

# Clements taking on variety of work

By Ashley Aguilar  
Spilyay Tymoo

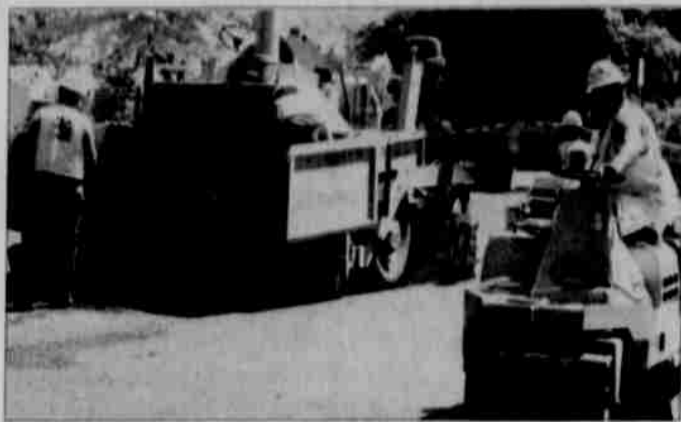
Warm Springs has found a new local contractor, Rudy Clements, former housing maintenance supervisor. Clements is now operating his own business, RC Construction.

He had worked for the tribes in the Housing Department for years. He resigned on May 1 of this year.

Even though he resigned from the Housing Department, his work is not yet done for the tribes. Clements is pursuing his career in the private sector, contracting work with other departments.

"I've got the skills to put together a project," said Clements. "I want to help Warm Springs Construction."

So far, Clements has done contracts through Credit, Hous-



Ashley Aguilar/Spilyay

A recent project for Clements was the paving of the basketball courts on the campus.

ing and Community Counseling Work has included everything from remodeling homes to paving basketball courts.

The tribe shows its support of local tribal members like Clements by contracting with him as opposed to looking off the reservation.

Just recently Clements fin-

ished paving a new basketball court on campus, and later put in different posts for the basketball hoops. The contract for this project was through the Community Counseling Department.

Clements has a family business, and it includes his son Chris, daughter Chantel, and

stepson Drew Pennington. All are in the mix, doing what they can to help.

Clements said he wishes to thank Hap Taylor & Sons for help with the recent basketball court project. He also appreciates working with Tribal Construction, the Recreation Department and Bureau of Indian Affairs Maintenance.

Anyone interested in contacting Clements for work on a project can call his cell phone at 541-419-4823.

## MAUPIN CAFÉ & PUB

Open seven days a week

7 a.m. till midnight or later

Serving a full menu

Pool table

In Maupin on Highway 197 before the bridge

Warm Springs, please support the businesses you see in the Spilyay. Thank you!

## Huckleberry Harvest Aug. 26-27

The Tenth Annual Huckleberry Harvest is August 26-27, a Friday and Saturday. The harvest is the main fund-raiser for the Museum at Warm Springs.

The Friday evening activities will be at the museum, starting at 5 p.m. There will be educational demonstrations Saturday morning at the museum, a behind-the-scenes tour of the permanent museum collections, and traditional dances at 11 a.m.

The theme of this year's Huckleberry Harvest is, "Yesterday, Today and Tomorrow."

The Saturday evening activities, including the auctions and dining, are at Kah-Nee-Ta. For information call 553-3331.

## Forest Products Industries contributes to museum

Warm Springs Forest Products Industries recently presented the Museum at Warm Springs with a \$10,000 Twanat Museum Business Membership check.

Ralph Minnick, WSFPI chief financial officer, and Lou Torgeson, WSFPI controller, presented the check to Carol Leone, museum executive director, and Dora Smith, museum development officer.

Membership helps the Museum at Warm Springs with raising funds to support general operations through the year, and to fulfill the museum's educational mission.

The Museum receives about one third of its budget

through Tribal Council appropriations, and raises the balance through membership, donations, admissions, gift shop sales, grants, and special events.

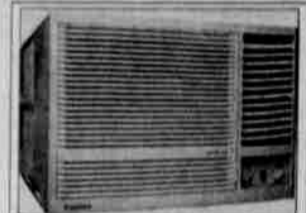
Warm Springs Forest Products Industries has been a longtime supporter of the Museum at Warm Springs through membership and exhibit sponsorships.

WSFPI is also a major participant in the museum's annual Huckleberry Harvest, as a corporate table sponsor, and as a buyer in the silent and oral auctions.

A business interested in becoming a member may contact the Museum at Warm Springs at 553-3331.

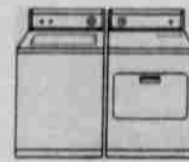
## Ralph's TV & Furniture

**15% OFF  
DINING ROOM  
SETS**



**Air  
Conditioners  
while supplies  
last**

**We now have  
Speed Queen  
washers & dryers**



**Open regular hours  
during remodeling  
9-6 Mon-Fri  
9-3 Sat.**



**Ralph's TV & Furniture**

**475-2578**

525 S.E. 5th St.  
Madras OR 97741

## Numu (Paiute) immersion classes

Through Sept. 2 the Numu (Paiute) language group is offering a half-day language lesson time for your child ages 4-6.

This immersion lesson is like summer school, only more fun.

The classes is held in the basement of the Education building.

Classes start at 8:30 a.m. and end at noon. There is room for only 15 students, and the class

is already half-full.

Previous students of the Numu language, no matter what age, are encouraged to come. Parent volunteers are needed.

If you would like more information regarding the class schedule, registration, or maybe what immersion is, then call the language trailer to speak to Carla, Shirley or Pat at 553-3575.

## Young Achiever Joshua Moody Sponsored by Les Schwab

Joshua Moody is one of seven students working with the Workforce Development Summer Program at the Kah-Nee-Ta High Desert and Resort Casino golf shop. Moody is 16 years old, and will be a junior this school year.



His job is to "meet and greet" the people who come to golf at Kah-Nee-Ta. Other things he does on the job are picking the balls on driving range, washing the carts and parking them.

The best part of the job is "tournaments, because it's the best way to get more tips," Moody said.

During the summer the golf courses are usually busy, giving the students a chance to get some hands on experience.

Moody's chose to work at the golf shop "because I wanted to golf, and to work out. It's a good job, and a way to learn different things," he said.

— By Ashley Aguilar

UNICEL USE #935

# AFTER-SCHOOL PRACTICE

Motorola V505 pocket-sized camera phone

**1**

Talk when you like with **600 True Nationwide Minutes** **Only \$40** monthly access

- Unlimited Nights & Weekends within the local Unicel network
- Unlimited GSM Unicel-to-Unicel calls within the local Unicel network
- Nationwide long distance

**2**

Add one feature. **Get a Second FREE.**

Add Night & Weekend Calling starting at 6 p.m. for only \$5 monthly access

Get Unlimited incoming calls **Absolutely FREE!** (A \$5 monthly value)

Features apply within the local Unicel network.

**3**

Save on a **HOT NEW PHONE.**

**\$30 to \$50** Mail-in Rebates

**4**

Download a little fun!  
AP News, games, sports, the latest weather and more.

**PLUS FREE CAR CHARGER OR CASE\*** \$14.95 value

\*Free accessory at participating locations.

**UNICEL** THE WAY WIRELESS SHOULD BE.

To find a Unicel location near you, call or click: 1-800-GO CELLULAR (452-3558) [WWW.UNICEL.COM](http://WWW.UNICEL.COM)

**UNICEL RETAIL STORE:** Redmond: 946 SW Veteran's Way, Suite 102 (Fred Meyer Plaza)  
**UNICEL AUTHORIZED AGENT:** Madras: Cellular Unlimited, 875 S. Hwy. 97  
 Unicel is an authorized provider of Lifeline and Link-up services.

Unicel is a service of RCC Holdings, Inc. Offer is subject to terms of wireless service agreement, data services terms and conditions and calling plan details. Additional charges will be included for each line of service to help Unicel defray its costs of complying with federal and state regulatory obligations, as follows: 3.104% USF charge; additional cost recovery fees of \$1.18 and .88 roaming charges are incurred; roaming taxes as passed on by our roaming partners and a \$2.00 roaming administration fee. These charges are not taxes or government-required charges. Credit check and security deposit may be required. \$30 activation fee applies to each line. Offer is not available on additional lines. Night & Weekend hours are from 9 pm through 6:59 am, Monday through Thursday, and from 9 pm Friday through 6:59 am Monday. Phone prices after rebates range from \$9.99 to \$179.99. Allow 8 to 10 weeks for rebate delivery. Rebate expires 10/31/05. Phone screen image has been enhanced for clarity. Digital features and service are not available in all areas and may vary due to atmospheric, topographic and other conditions. Approved GSM phone required. Must be at least 18 years old with positive ID. Customer must verify physical address within the local Unicel network to obtain service. Federal, state and local taxes and surcharges apply. Limited time offer, good while supplies last. Other restrictions apply. See store for details.