

CAFE offers student enrichment

The Child And Family Enrichment (CAFÉ) Project is an after school program for students at Jefferson County Middle School. The program takes place at the school and provides a supervised after school environment, with access to enriching experiences. Award-winning literature is a regular part of the CAFÉ program. An evening meal is provided to CAFÉ students and bus transportation home is provided. There is no enrollment fee.

The CAFÉ Project is divided into three terms, so that students

with after school conflicts for part of the year can still register for CAFÉ terms that do not interfere with other activities. CAFÉ terms are: October to December 17; January 3 to March 4, 2005; and March 7 to May 27. CAFÉ takes place Monday through Friday on full school days, with the exception of the first Friday of each month. The program begins after school releases and dismisses at 6:10 p.m.

For more information, contact Anne Scheideman, CAFÉ Project Director, at 475-6192.

Middle school students post outstanding attendance

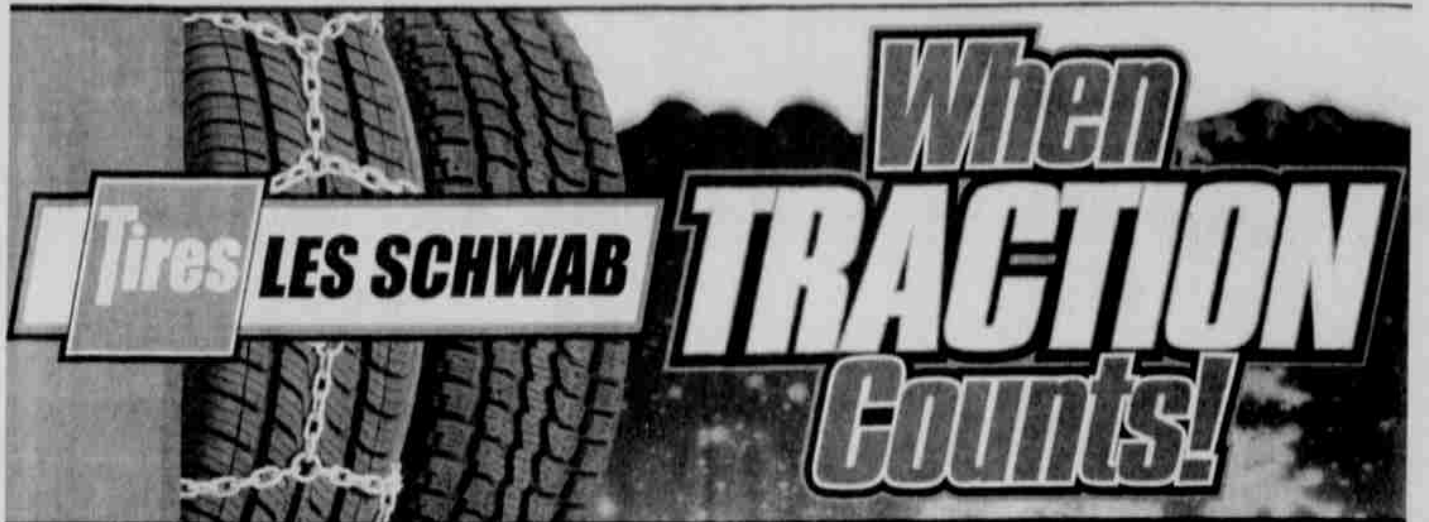
(Continued from page 7)

Ambrose Meanus, Olivia Parkins, Leighton Pennington, Tim Red Dog, Jenny Red Fox, Carlos Reynoso, Troy Sam-Smith, K-Lei Smith-Strong, Stefan Sutterlee, Victor Switzler, Jr., Curtis Thompson, Jr., Cole Watson.

Seventh grade:
Marissa Ahern, Jamie Ball, Angela Bellanger, Hillary Camas-Alire, Traci Colwash, Seth David, Spencer Ellsbury, Chezzeray Frank, Elias Gilbert, Dylan Joseph, Luther Keo, Brittan Lumpmouth, Merima Made, Kristi Olney, Katherine Quaid, Damian Reynoso, Cassandra Sam, Latasha Sampson, Jason Smartlowit, Martin Smith-Mennealy, Rodney Smith, III, Tyrell Smith, Jessica Tacza, Allee Tewee, Dena Thomas, Ferman Tufti, Jr., Devin Winishut, Charles Wolfe,

Karlen Yallup, Marissa Yaw.

Sixth grade:
Jay Blackwolfe, Douglas Brisbois, Archie Caldera, Michelle Charley, Charlene Chee, Daniel Cloud, Mikayla Collins, Cyrus Conner, Ashlynn Danzuka, Alice Farias, Martin Frank, Wyatt Frank, Waymon Harry, Leslee Henderson, Arianna Henry, Jaylon Holliday, Stefan Jones, Alan LeClaire, Renee Miller, Chelsie Patt, Justin Queahpama-Mehlberg, Tanisha Reynoso, Ashley Smith-Sampson, Alvis Smith, IV, Joella Smith, Linda Smith, Mallory Smith, Larry Spino, II, Leo Sportsman, Amanda Squiemphen-Yazzie, Antoinette Tallbull, Laura Thomas, Dorothea Thurby, Kenneth VanPelt, Nicole Wahnetah, Jesse Wallulatum, Robin Warner, Chantel Williams, Kendra Wolfe.



LES SCHWAB BATTERIES

WHICH BATTERY IS RIGHT FOR YOU? Ask the professionals at Les Schwab. Different vehicles require different cranking amps. At Les Schwab, we'll make sure the battery you get is the right one for you.

40 MONTH WARRANTY 39.95	60 MONTH WARRANTY 49.95	XHD 72 MONTH WARRANTY 69.95	XTREME POWER 84 MONTH WARRANTY 79.95	POWER PAK 72 MONTH WARRANTY 113.17
-----------------------------------	-----------------------------------	---------------------------------------	--	--

BATTERY EFFICIENCY
A battery is only 50% efficient at 0°F. At 70°, the same battery is only 85% efficient. But how the engine needs your battery to start (crank) to turn it over at 0°F is 4 times that of 70°. This is why most batteries will fail in extreme cold or hot conditions.

FREE BATTERY CHECKS • NO APPOINTMENT NECESSARY • TRAINED PROFESSIONALS • LATEST IN TESTING EQUIPMENT

CHAINS

PASSENGER CHAIN RETURN PROGRAM

IF YOU DON'T USE YOUR PASSENGER CAR CHAINS, RETURN THEM FOR A FULL REFUND AFTER THE LAST LEGAL DATE FOR STUDDED TIRES. Return Program does not apply to Spitzke Spider Devices.

SIERRA CABLE LINK TIRE CHAINS
STARTING AT **25.95**
AN ECONOMICAL CHOICE!

LES SCHWAB QUICK FIT™ DIAMOND TIRE CHAINS
PASSENGER STARTING AT **63.95**
PASSENGER LIGHT TRUCK

THE LES SCHWAB QUICK FIT™ DIAMOND CHAINS THEY TAKE THE WORK AND FRUSTRATION OUT OF USING TIRE CHAINS. THEY GO ON AND OFF QUICKLY AND FIT RIGHT TO PROVIDE FACILE TRACTION DURING TOUGH WINTER DRIVING CONDITIONS.

Green Spot Welders

Welding repair, Machine Shop, Portable Services and Welding Supplies

Custom made furnishings

(541) 475-2519
108 NW 4th Street
Madras, OR 97741

Tribal Dancers wanted to perform at **Wy-Kan-Ush-Pum Gala**, a salmon feast and native art auction benefiting tribal salmon restoration efforts.

May 21, 2006 Portland, Oregon. Travel stipend available. To apply, call Cheron (503) 238-3555.

Can art save salmon?

The Columbia River Inter-Tribal Fish Commission is seeking donations of fine artwork from tribal artists for auction at the Fifth Annual Wy-Kan-Ush-Pum (Salmon People) Gala in May 2006, a fundraising event celebrating salmon and art, that will raise money for tribal salmon restoration efforts. There are generous benefits and promotional opportunities for all donations received before February 1, 2006. Please contact Cheron Calder at (503) 238-3555, or write calc@critfc.org for more information. All contributions are due by April 15, 2006.

salmon people

ALIGNMENT

For Better Handling and Tire Mileage

Every car should at least have a thrust alignment. It relates all 4 wheels to a common center line to insure maximum tire life and a centered steering wheel.

Over 80% of all cars built today should have a 4 wheel alignment. Most front wheel drives and some rear wheel drives have rear wheel adjustments. We invite you to ask us about it.

STANDARD ALIGNMENT 22.95	THRUST ALIGNMENT 45.95	4 WHEEL ALIGNMENT (Shims included) 69.95
---------------------------------	-------------------------------	---

SNOW WHEELS

STARTING AT **21.00**

WHEN YOU BUY A SET OF SNOW WHEELS YOU SAVE TIME AND MONEY - UP TO \$45 EACH TIME YOU HAVE YOUR SNOW TIRES INSTALLED OR REMOVED.

SHOCKS & STRUTS

PASSENGER

18.50	29.95
--------------	--------------

STROTS ARE AVAILABLE IN MOST APPLICATIONS. Call for pricing on strut assemblies.

LIGHT TRUCKS & SPORT UTILITY VEHICLES

29.95	38.95
--------------	--------------

59.95

COMPLETE BRAKE SERVICE

Of the many parts in your car, light truck or sport utility vehicle, none are more important than those which make up your braking system. At Les Schwab, we're proud of the brake service we provide our customers. That's why we do it right, and we do it complete. We feel a brake system is only as good as its weakest part. Here's what we do:

COMPLETE REAR DRUM BRAKE SERVICE 1. High quality brake shoes 2. Resurface drums 3. Set new self-adjust return springs 4. All new wheel cylinders 5. Adjust parking brake 6. Bleed & Adjust entire system 7. Free replacement 25,000 mile warranty \$149.95 (MOST CARS)	REAR DRUM BRAKE ASSEMBLY 1. High quality brake shoes 2. Resurface drums 3. Set new self-adjust return springs 4. All new wheel cylinders 5. Adjust parking brake 6. Bleed & Adjust entire system 7. Free replacement 25,000 mile warranty \$149.95 (MOST CARS)	CALIPER ASSEMBLY 1. High quality brake pads 2. Resurface rotors 3. Adjust wheel bearings 4. Bleed & Adjust entire system 5. Free replacement 25,000 mile warranty \$174.95 (MOST CARS)
---	---	---

FREE BRAKE INSPECTIONS MOST VEHICLES

OVER 380 LOCATIONS TO SERVE YOU Open Monday-Friday: 8:00 am - 6:00 pm. Saturday: 8:00 am - 5:00 pm.

Dave's Homes

Expect the best - Don't settle for less!

- * Poured concrete stemwall foundation
- * Homes 924 square feet to 2600 square feet
- * Custom changes available
- * Includes all utilities and excavation required by Tribal Credit
- * Free Sky Dive with every purchase

Join the off-site construction revolution today!
located behind Safeway in Madras, 680 NE Hwy. 97: 541-475-2766