

THE CONFEDERATED TRIBES LANGUAGE LESSON

Language Lessons

Isiksiyáash John-nm. *John got friendly with me.*

Páyu iwa tq'ix. *She is very precious.*

Átauwitamash táaminwa. *I will love you always.*

Au ipapálst'an tmíinwa. *Their marriage is forever now.*

Patmáisha chána tkwina. *Everyone respects Valentilne's Day.*



Iwá tmnat naknúwíla. *Respect your spouse.*

Niix ai iq'itshksha. *It is good he is paying attention.*

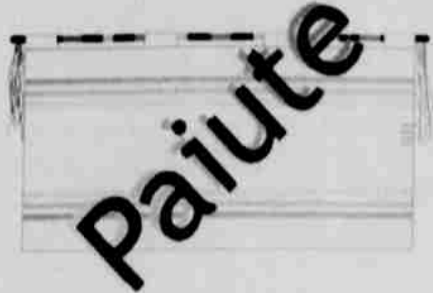
Niix atashwá páxtwait. *We have a good friendship.*



Átmnashaash kwána wínshna awála áyatna. *I love or I am in love with him or her.*

John-nmash isiksísha. *John is getting chummy with me.*

Isiksiyáash John-nm. *John got friendly with me.*



atsa	red
oha	yellow
atsasodyoidu	pink
poo'e	green
epoohe	purple
oa	orange
poohe	blue
ese	grey
toohoo	black
toha	white

Colors

A Poem By Valerie Switzler

Red is the color of the blood that makes our heart beat. The heart is the symbol of life.



Itatbalaumit kimank ilgauwulkt qidau engi ilxagwamniit dux dux alixalxuxa. Iyagwamniit qidau engi alxaxlukt itgaxiwulx.

Yellow is the color of the sun that beats warm in the sky. The sky a symbol of God's power of creation.

Igishumit kimank agałax qidau datla igushuxba. Igushuxaxba Shaxel Ishtamx kanawi dan Idiaxiwulx.

Pink is the color of the flowers that bloom in the spring. Spring is when life starts anew.

Kanawi qengi itk'iwax wax aluxaxa gawaxemdux. Gawaxemdux kanawi dan ashumax ayumda.

Green is the color of grass that covers the hills. Hills that majestically grow the foods that we need.



Daptcax alumda wachkti kwidau itpcupnax saqwba idunamksh. Kwaba yax daba atgumda kanawi dan itxlem aluxaxa.

Purple if the color of huckleberries that grow in the fall. Fall is the time of harvest of food for the year.

Idabagumsh kmalaladix aluxaxa. Kmalaladix wit'ax dauka kanawi dan itxlem aduksda.

Orange is the color of the sky when the sun sets or rises. The sun is the keeper of time that divides day from night.

Dagash kimank igushax qanchix agałax aluxlaida awachi alatbaya. Agałax aluchwxida chushdix alutaida.

Blue is the color of water that gives us life. Life is a gift from the creator that we must cherish.



Daptcax kimank ilchqwa agalluda waxlutk. Yaxka Shaxel Ishtamx chalxlutk waxlutk agigimxinaunxwtma kanawi danba.

Black is the color of night that lets us rest. Rest replenishes our spirit to take on the challenges of the next day.



Datal kimank xabaxix qidau engi adenxent'aimachgwa. Atgalxul itxiwulx atdanshul mank lablad xiwulx anshgugigaya bama kadux.

White is the color of buckskin that covers a newborn babies board. Children are borrowed from the creator until the can worship Him on their own.

Datgup kimank as'eqs'eq ipaskwal akiluxaxdix ilk'ask'asba ilkau. Itkadutinksh kimank giuxamishtxt shaxel ishtamx qanchiptbet laich qengi axilgiuludamida.

Atsa is the color of our pupe that makes our piwe beat.



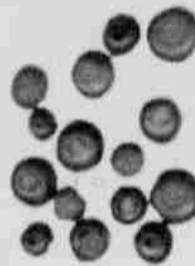
Oha is the color of the taba that beats warm inthe koomeba.

Atsasodyoidu is the color of the tonega that blooms in the tamano.

tamano.

Poo'e is the color of the waapu that covers the kaamu.

Epooh'e is the color of togapono'a that grows in the tatza.



Oa is the color of the koomeba when the taba sets or rises.

Poo'h'e is the color of paa that gives us life.

Ese is the color of agi that is the staple of life.



Toohoo is teh color of togano that lets us uwe.

Toha is the color of tusongopu that covers a hoopa.

pupe	blood
piwe	heart
taba	sun
koomeba	sky
tonega	flower
tamano	fall
waapu	juniper
kaamu	hills
togapono'a	huckleberries
tatza	summer
paa	water
agi	salmon
togano	night
uwe	sleep

Ichishkiin Word Find!

L Á K A S T P I N A P T
 Ú S E T P Í P U Á K W S
 C Í Q W Í A M P A X A T
 Á A X Y L N U X S H Í N
 Ú Í L T M W Í S Q A Q A
 K E A K W C H M X L L M
 C H M U K S T U Y I I U
 M P T X N I N S H S Á S
 S K W Í Y X M C Á H Í H
 T I S K A I Q N A X S H

Word-Find Answers

Naxsh	Luca	Tiskai
Lamt	Lakas	Pcxninh
Paxat	Spilya	Chmuk
áa	Pinapt	Yamash
Wisqaga	Xwayama	Cmst
Pípu	Napt	Musmuscn

Community Language Classes

Kiksht

Mondays, 3:30 to 5 PM
 Language Trailer
 (Behind the Education Building)

Thursdays, 3:30 to 5 PM
 Dance Practice, Community Center

Numu

Wednesdays, 3:30 to 5 PM
 Language Trailer
 (Behind the Education Building)

Ichishkiin

Tuesdays & Thursdays, 3:30 to 5 PM
 1st Floor Training Room
 Educaiton Building

Tuesdays & Thursdays, 2 to 3 PM
 Natural Resources

Tuesdays & Thursdays, 6 to 8 PM
 Simnasho Longhouse