

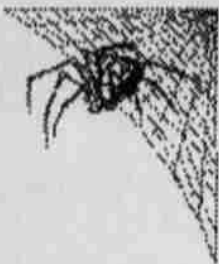
Sahaptin Language Lesson

Sahaptin Language Lesson

WANAQ'IT MONSTER STUFF ISKAUSKAUTPAMA TUN TUN

Tat'aliya

Witch Woman, or Basket Woman, that eat disobedient children. There is a legend on how, Tat'alia became a myth to help teach children to obey.



Uluuts (or) Tcs

Something scary, unsafe, used to discipline or warn a crawling baby or a toddler.



St'iyaha

Stick Indian, Little people, like elf's. All ages of people were warned about

the Stick Indian, he will get you lost.

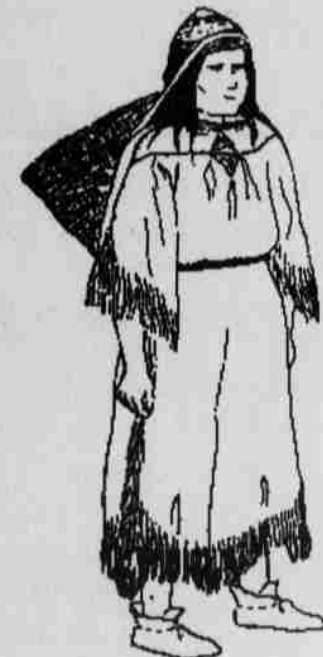


Łch'ach'a

Spirit of a dead person, believe to appear or haunt a person, which was used to discipline any age people.

NAPŁKWI

**MONSTER SENTENCES
ISKAUSKAUTPAMA SNWIT**



Tat'aliya, tkwatała anakuma maiyanashma pawa chau yikni, awala qw'shm.

Witch woman or basket woman, that eat disobedient children.

Uluuc's ku C's, iwa mcc'ip ku iyia, tuwiyach'ut, wautskaukt, awala taaxwat miyanashna anaq'upn iwa sapxwninla awala wiyantwit.

Something scary, dangerous which was used to discipline or warn a crawling

ing baby or a toddler.

St'iyaha, ksks pt'xanupama tanan, taminwatash patuyach'uknxana St'iyahamiki, tlaaxw miyanash ku nch'inch'i tananma pawacha taaxwanii, ku tuwiyach'unii.

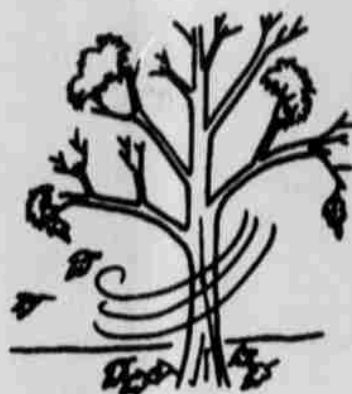
Stick Indian, little people, like Elfs. All ages of people were always warned and disciplined by the elders at the mountains about the Stick Indian.

Łch'ach'a, Tl'yawimami Łch'ach'a kunkein papatuwaich'ukinxana, papataaxwaxana, papatalaxitxana nami tananma.

Spirit of a dead person, believed to appear or haunt a person, which is used to discipline any age of people.



Mtaalkwi



Au iwa Tiyam
It's now falltime.

Au tlaaxw plapla ixauyachanwisha
All the leaves are falling down.

Tlaaxw Miyanash Iwata Kw'alani chi alxaixpa
All the children are happy for this Month because of Halloween



Anaku sc'at itxanata kuuk papaishta Tat'aliama.
When it gets dark thats when the Ghosts and goblins will appear.

Wa'au papachu sc'at
Especially at Midnight.

Aaaahna! Mc'c'p!
Oh! How scary!

Ah! Shaax!
Oh how fierce!

Shapa xalk'uknm!
You scared me!

Wau'aiyanam ai wa!!
You are so tricky or your a trickster.

Hananui inawa!
Those scary sounds are sounding very mischievous or troublesome.



Xlaak pawnpta Kanti miyanashma.
The children will get a lot of candy during Halloween.

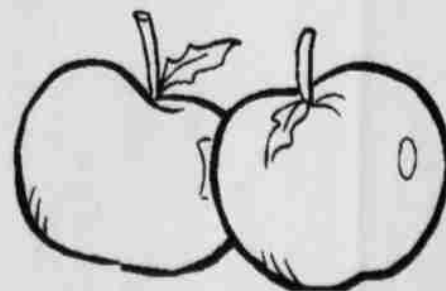
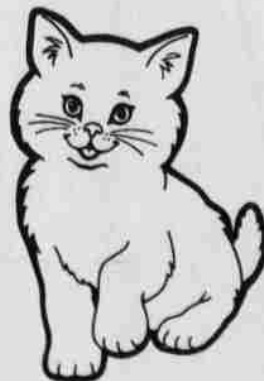
**PINAPŁKWI/PAXAŁKWI
THURSDAY/FRIDAY**

Chi iwa halloween pama llaxaukt ku Tiyamitpama laxaukt.
This is Halloween and Fall time Coloring.



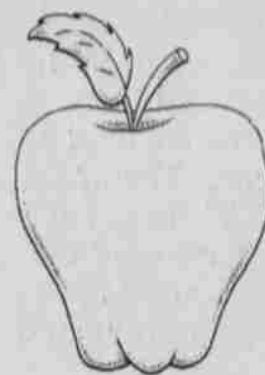
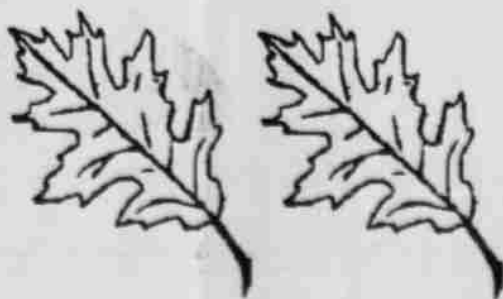
Chi iwa maxsh Shantlu
This is an orange pumpkin or squash.

Chi iwa chmuk P'uus
This is a black cat.



Chi iwa mxsh apples
This is yellow apples.

Chi iwa luch'a plapla.
These are fall brown leaves.



Chi iwa luc'a apples
This is a red apple.

Chi iwa plas Ich'ach'a
This is a white skeleton or ghost.



WHEN IS YOUR FAVORITE LANGUAGE ON THE AIR?

October

Sun	Mon	Tue	Wed	Thu	Fri	Sat
1	2	3	4	5	6	7
		Sahaptin				
8	9	10	11	12	13	14
		Wasco				
15	16	17	18	19	20	21
		Paiute				
22	23	24	25	26	27	28
		Sahaptin				
29	30	31				
		Wasco				

November

Sun	Mon	Tue	Wed	Thu	Fri	Sat
			1	2	3	4
5	6	7	8	9	10	11
		Paiute				
12	13	14	15	16	17	18
		Sahaptin				
19	20	21	22	23	24	25
		Wasco				
26	27	28	29	30		
		Paiute				

Agency Language Classes

@ the Language Trailer
behind the Old Boys Dorm
Begins week of Sept. 25th

Paiute Language
Wed. 6-7 PM

Sahaptin Language
Tues. & Thurs.
3:30-4:30 PM

Wasco Language
Mon. 6:00-7:00 PM

Sahaptin Language Classes

@ Simnasho Longhouse
Tues. & Thurs.
6:00-7:00 PM

