

Sahaptin Language Lesson

Sahaptin Language Lesson

Wanaq'it
Monday's Lesson
Hawital Ku Nami Piap

Chi alxaix iwanisha Hawital
This the month of April.

Chi wanicht Hawital iwä anakush snwit xawisha
This name Hawital is from the word ripen.

Hawital alxaix kuuk iwä pinäkw'alat namä piäpmiki
This month of April is when we celebrate the day Jesus Christ resurrected.

Chi Hawital alxaix pinaptipa Ikwipa kuuk iwä pinäkw'alat namä piäpmiki
On the fourth day of April is Easter.

Chi alxaixpa kuta kuuk Nami piap itaxshiya mtaatipa Ikwipa
Also this month on Easter day is when Jesus Christ resurrected on the third day.

Au iwä Wawaxam kuuk auku t'ax tunx tunx inatixa natit ku xnit
You know when it turns springtime, because thats when all the flowers and roots and trees bloom.

Hawital alxaixpamtaaminwa ituxtuxnxna
In the month of April it always rains. (April Showers)

Kuushxi t'ax puui ic'c'uupnxa kü xlaak waipxt iwanaxa
The snow melts and the streams run down into the creeks and rivers.

Napikwi
Tuesday's Lesson
Np'wilamä T'axxtun

Np'iwilama	Fishermen.
Nch'i Wana	Columbia river.
Ashuxni	Dipnet and
gilnet.	
Auxt	Set net.
Wautanash	Scaffold.
Twanúwaash	Vine maple
used for poles.	
Txws	Hemp used for net.
K'iya	Hook made of
bone.	
Taixai	Fishing spear.
Nusúx	Salmon.
Wat'ama	Boat.

Mtaalkwi
Wednesday's Lesson
Ceremonial Fishing

Kä'witai pawinaxa nch'i wanayau
The ceremonial fishing is done in the Columbia River.

Np'iwilama pakúxa ashuxni Nch'i Wanapa
The fishermen use gillnets at the Columbia River.

Wat'amakí panp'iwixa Nch'i Wanapa
Boats are used at the Columbia River.

Wautanashpa panp'iwixa Nch'i Wanapa kü tunx tunxpa wanapa
Scaffolds are used at the Columbia river and surrounding areas.

Taixai kü K'iya iwacha äni pipshmiki
The spear and hook were made of bone.

Txws ku twanuwaash pan'piwixa Nch'i Wanapa.
Indian hemp (nets) and Vine maple wood(Poles) were used at the Columbia River.

Pinapikwi
Thursday's Lesson
Núsux Ku Shushainsh

Nusux Kü Shushainsh wawaxmi iwachai chnxamsh Nch'i Wanapa
The salmon and steelhead are migrating in the spring run.

Atwashatanam nusuxna lakamiinai
Salmon can be canned for later use like in salmon soup or gravy.

Ch'lai iwä anit nusúxmi
Salmon can also be pounded into a fine powdery form.

Inat'it iwä Nusúx ku Shushainshna
Salmon and Steelhead can be smoked for later use.

Suulit iwä nusúxna kü waitwat waptuki
Salmon can be salted and eaten with potatoes.

Ashapalamulaitanum Yaaxti kü kúmkumna
Salmon eggs and salmon heads can be boiled.

Paxalkwi
Friday's Lesson
Mishmashwa ku Tun Chi Iwa

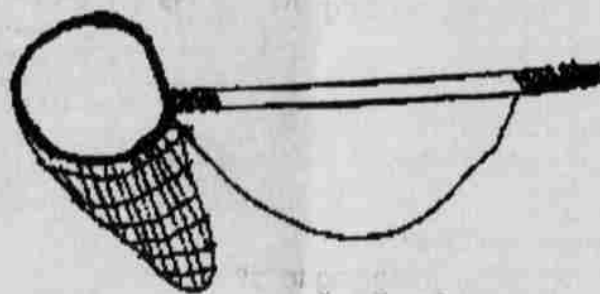
Dallas mishmashwa Ashuxni
Ii washaash ai Ashuxni

Suzie mishmashwa Lakamiin
Ii lakamiin ashwa

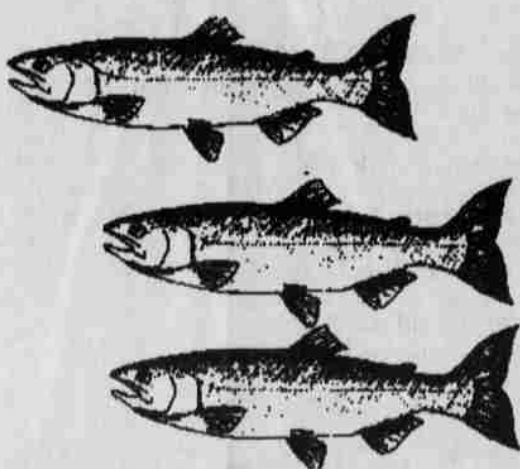
Dallas mishmashwa Wautanash
Ii wautanash Ashwa

Suzie mishmashwa Núsux
Ii washaash ai Núsux

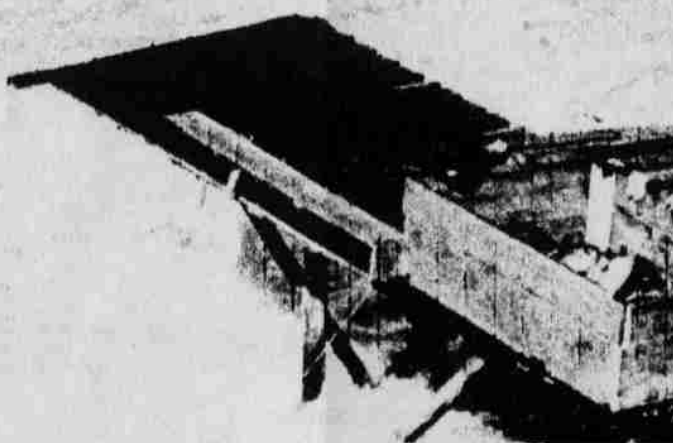
Tun chi iwa _____



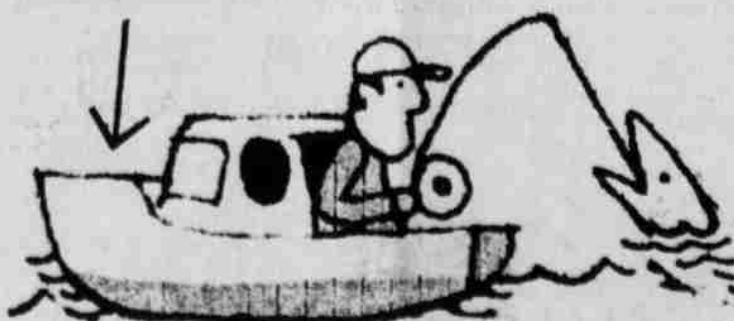
Tun iwa _____



Tun chi iwa _____



Tun iwa _____



SILENT AUCTION
RESULTS 12: 00 MAY 2, 2000
Did you get the item you were bidding on?

May 19 & 20 , 2000
WORKSHOP for PARENTS
of WSE and ECE
Tribal Language
Program Students!!
Place: To Be Announced!

PRE-REGISTRATION FORMS ARE AVAILABLE AT WS LANGUAGE LEARNING CENTER. (Old Boys Dorm)

We will have workbooks available so your child will continue to learn over the summer! Copying of tapes will also be available! Come Join us even if you are an uncle, aunt, grandma, grandpa. or caretaker of a language learning child! Thank you!

Language Classes

Sahaptin Language Classes for WSE Parents
Tuesday 5:00 to 6:00 at the Language Trailer

Sahaptin Language Classes for Community Members
Tuesday & Thursday 4:00 to 5:00 at the Admin. Conf RM #2

Wasco Language Classes
Monday 6:00 to 7:00 @ the Language Trailer

Brown Bag Kiksht Language Lessons
Tuesday and Thursday's 12:00 to 1:00 @ the Language Trailer

Computer Language Games and Stories are available for your use at the Computer Lab at the Old Boys Dorm. See Valerie.

When is your favorite Language Lesson on KWSO? A Reminder...the Language Teachers will be on furlough at the end of this month.

May 2000

Sun	Mon	Tue	Wed	Thu	Fri	Sat
	1	2	3 Paiute	4	5	6
7	8	9	10 Sahaptin	11	12	13
14	15	16	17 Wasco	18	19	20
21	22	23	24 Paiute	25	26	27
28	29	30	31 Sahaptin			