

# Sahaptin language lessons

## Sahaptin Language Lesson

**Wanaq'it**  
Monday's Lesson  
Hawital Ku Nami Piap

Chi alxaix iwanisha Hawital  
This the month of April.

Chi wanicht Hawital iwä anakush snwit xawisha  
This name Hawital is from the word ripen.

Hawital alxaix kuuk iwä pinäkw'alat namä piäpmiki  
This month of April is when we celebrate the day Jesus Christ resurrected.

Chi Hawital alxaix pinaptipa ikwipa kuuk iwä pinäkw'alat namä piäpmiki  
On the fourth day of April is Easter.

Chi alxaixpa kuta kuuk Nami piap itaxshiya mtaatipa ikwipa  
Also this month on Easter day is when Jesus Christ resurrected on the third day.

Au iwä Wawaxam kuuk auku tl'aax tunx tunx inatiixa natit ku xnit  
You know when it turns springtime, because thats when all the flowers and roots and trees bloom.

Hawital alxaixpamtaaminwa ituxtuxnna  
In the month of April it always rains. (April Showers)

Kuushxi tl'aax puui ic'c'uupnxa kú xlaak waipxt iwanaxa  
The snow melts and the streams run down into the creeks and rivers.

**Napikwi**  
Tuesday's Lesson  
Np'wilamä Tl'aaxtun

Np'wilama  
Nch'i Wana  
Ashuxni  
gilnet.  
Auxt  
Wautanash  
Twanúwaash  
used for poles.  
Txws  
K'iya  
bone.  
Taixai  
Nusúx  
Wat'ama

Fishermen.  
Columbia river.  
Dipnet and  
Set net.  
Scaffold.  
Vine maple  
Hemp used for net.  
Hook made of  
Fishing spear.  
Salmon.  
Boat.

**Mtaalkwi**  
Wednesday's Lesson  
Ceremonial Fishing

Kä'witai pawinaxa nch'i wanayau  
The ceremonial fishing is done in the Columbia River.

Np'wilama pakúxa ashuxni Nch'i Wanapa  
The fishermen use gillnets at the Columbia River.

Wat'amakí panp'iwixa Nch'i Wanapa  
Boats are used at the Columbia River.

Wautanashpa panp'iwixa Nch'i Wanapa kú tunx tunxpa wanapa  
Scaffolds are used at the Columbia river and surrounding areas.

Taixai kú K'iya iwacha äni pipshmiki  
The spear and hook were made of bone.

Txws ku twanuwaash pan'piwixa Nch'i Wanapa.  
Indian hemp (nets) and Vine maple wood(Poles) were used at the Columbia River.

**Pinapikwi**  
Thursday's Lesson  
Nusúx Ku Shushainsh

Nusúx Kú Shushainsh wawaxmí iwachai chnxamsh Nch'i Wanapa  
The salmon and steelhead are migrating in the spring run.

Atwashatanam nusuxna lakamiinai  
Salmon can be canned for later use like in salmon soup or gravy.

Ch'lai iwä anit nusúxmi  
Salmon can also be pounded into a fine powdery form.

Inat'it iwä Nusúx ku Shushainshna  
Salmon and Steelhead can be smoked for later use.

Suulit iwä nusúxna kú waitwat waptuki  
Salmon can be salted and eaten with potatoes.

Ashapalamulaitanum Yaaxti kú kúmkumna  
Salmon eggs and salmon heads can be boiled.

**Paxalkwi**  
Friday's Lesson  
Mishmashwa ku Tun Chi Iwa

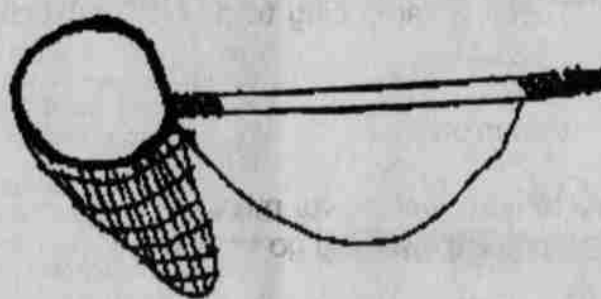
Dallas mishmashwa Ashuxni  
Ii washaash ai Ashuxni

Suzie mishmashwa Lakamiin  
Ii lakamiin ashwa

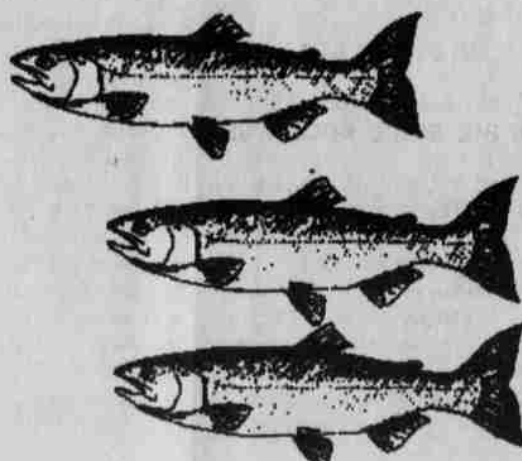
Dallas mishmashwa Wautanash  
Ii wautanash Ashwa

Suzie mishmashwa Nusúx  
Ii washaash ai Nusúx

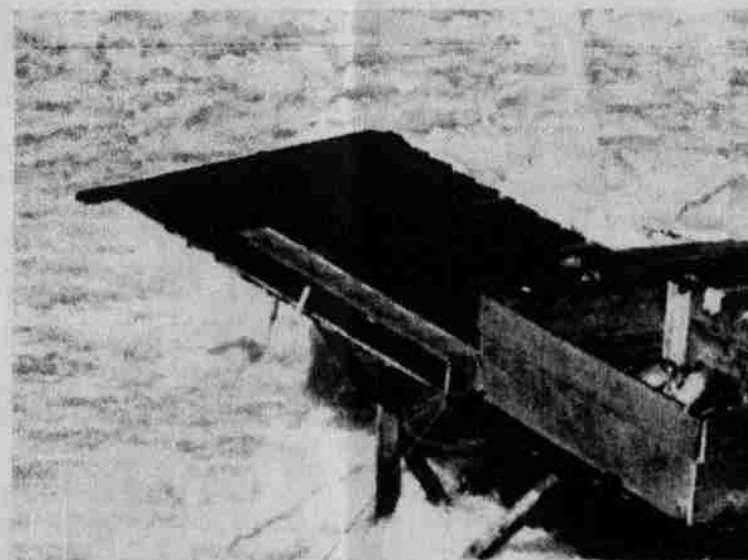
Tun chi iwa \_\_\_\_\_



Tun iwa \_\_\_\_\_



Tun chi iwa \_\_\_\_\_



Tun iwa \_\_\_\_\_



**Ichishkiin Sapsikw'at**  
Sahaptin Language Classes  
Classes Still Going!



Agency

**Parent/Student Classes:**

Language Trailer: Tues 5-6:00 pm

**Brown Bags:**

Administration (Conf #2 & #3): Tue & Thu  
IHS: Mon & Wed TIME CHANGE TO 4:00 PM

Simnasho

**Simnasho Longhouse:**

Sundays: After 8:00 AM breakfast

Thursdays: 6-7pm.

Instructors: Suzie Slockish, Dallas Winishut and Arlita Rhoan

Come join us! We're all family, let's learn together!

PAIUTE

Language Classes

Still going!!!

Instructor: Patricia Miller



Check with Pat on Homebase location!  
Come join us! We're all family, let's learn together!

**Kiksht**  
Wasco Language Classes  
Mondays  
6:00-7:30



Starting again April 12, 1999  
At the Language Trailer behind old boys dorm

Elders Gladys Thompson and Madeline McInturff lead us through lessons you want to learn!

Come join us!

We're all family, let's learn together!

DID you enjoy yourself at the Language Summit? Let us know what you thought drop us a