

# Paiute language lessons

## Paiute Language Lesson

Deer Hunting Season  
Sumu Tabeno  
Monday



Ta awamoasu tuhoawiga!  
Let's go hunting early in the morning!

Hano u adu?  
Where is your rifle?

U ha'a nabakapu ka'yoo?  
Do you have bullets?

U kwehe kakwatoo!  
Sharpen your knife!

Awamoasoo te'a yotseoo!  
So get up real early!

Waha Tabeno  
Tuesday



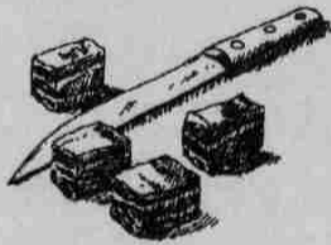
Hano ta tuhoawigakwe?  
Where should we go hunting?

Kibanagatu ewa'yoo tuhudya!  
There's a lot of deer in the mountains!

Nu manege'yoo poone!  
I seen five of them!

Nume sumuoo tonapaow!  
We knocked one over!

Yise oo tuhaneo!  
Now were going to butcher it!



Pahe Tabeno  
Wednesday  
Everyday Conversation!



Hemma u poone?  
What do you see?

Nu u kaaze poone!  
I see your car!

Haga u poone?  
Who do you see?

Nu umu poone!  
I see them!

Umu ha'a ume poone?  
Did they see you?

Watsu Tabeno  
Thursday  
Everyday Conversation!

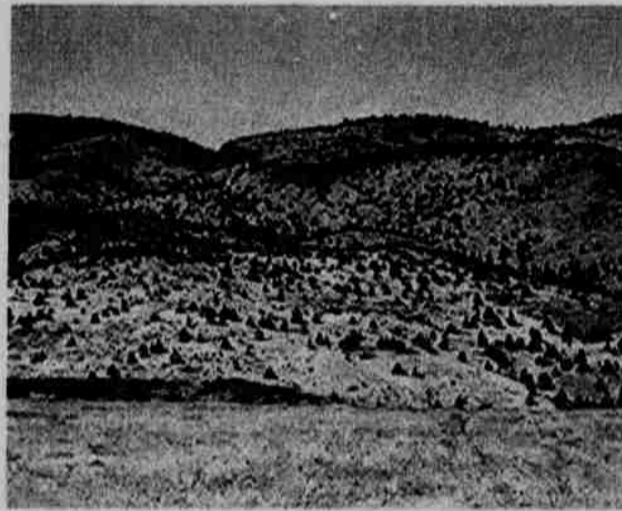
Ya'atoo kemmow!  
Come over here!

Oobe hoonakwe tubemooa!  
Go play outside!

Hemma u petzape?  
What do you like?

Ewow nu hemma petzape!  
I like lots of things!

Pakwe Tabeno  
Friday



Ta awamoasu tuhoawiga!  
Let's go hunting early in the morning!

Hano u adu?  
Where is your rifle?

U ha'a nabakapu ka'yoo?  
Do you have bullets?

U kwehe kakwatoo!  
Sharpen your knife!

Awamoasoo te'a yotseoo!  
So get up real early!

Hano ta tuhoawigakwe?  
Where should we go hunting?

Kibanagatu ewa'yoo tuhudya!  
There's a lot of deer in the mountains!

Nu manege'yoo poone!  
I seen five of them!

Nume sumuoo tonapaow!  
We knocked one over!

Yise oo tuhaneo!  
Now were going to butcher it!

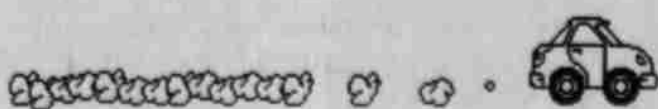
Hemma u poone?  
What do you see?

Nu u kaaze poone!  
I see your car!

Haga u poone?  
Who do you see?

Nu umu poone!  
I see them!

Umu ha'a ume poone?  
Did they see you?



Ya'atoo kemmow!  
Come over here!

Oobe hoonakwe tubemooa!  
Go play outside!

Hemma u petzape?  
What do you like?

Ewow nu hemma petzape!  
I like lots of things!



### KIKSHT WASCO LANGUAGE CLASSES

<b>COMMUNITY CLASS</b> LANGUAGE TRAILER 6:00 - 7:00 MONDAYS BEGINNING OCTOBER 5	<b>HOMEBASE CLASS</b> JOANN SMITH/IRENE TOWE RESIDENCE THURSDAY EVENINGS MORE INFO TO COME CALL 553-3393
<b>HOMEBASE CLASS</b> MADELINE MCINTURFF'S HOME 6:00-7:30 TUESDAYS BEGINNING SEPTEMBER 29, 1998	<b>INSTRUCTORS:</b> GLADYS THOMPSON AND MADELINE MCINTURFF

Paiute Classes have been postponed until further notice.

### ICHISHKIIN BROWN BAG LANGUAGE LUNCHES

<b>ADMINISTRATION</b> CONF RM #3 12:00-1:00 PM TUESDAYS & THURSDAYS BEGINNING OCTOBER 6	<b>WSE PARENTS</b> LANGUAGE CLASS TUESDAYS BEGINNING OCTOBER 6
<b>INDIAN HEALTH SERVICE</b> ATRIUM A 12:00-1:00 PM MONDAYS AND WEDNESDAYS BEGINNING OCTOBER 5	<b>INSTRUCTORS:</b> ARLITA RHOAN, SUZIE SLOCKISH, AND DALLAS WINISHUT

EVERYONE  
WELCOME

## November 1998

Sun	Mon	Tue	Wed	Thu	Fri	Sat
	11:00 SAH 8:30 WAS 2:00 Comp	8:30 WAS 2:00Meth 101	8:30 PAI 11:00 SAH	8:30 PAI 2:00Meth 101	11:00 SAH	
1	2	3	4	5	6	7
	11:00 SAH 8:30 WAS 2:00 Comp	8:30 WAS 2:00 Meth 101	Holiday	8:30 PAI 2:00 Meth 101	11:00 SAH	
8	9	10	11	12	13	14
	11:00 SAH 8:30 WAS 2:00 Comp	8:30 WAS 2:00 Meth 101	8:30 PAI 11:00 SAH	8:30 PAI 2:00 Meth 101	11:00 SAH	
15	16	17	18	19	20	21
	11:00 SAH 8:30 WAS 2:00 Comp	8:30 WAS 2:00 Meth 101	8:30 PAI 11:00 SAH	Holiday	Holiday	
22	23	24	25	26	27	28
	11:00 SAH 8:30 WAS 2:00 Comp					
29	30					

## December 1998

Sun	Mon	Tue	Wed	Thu	Fri	Sat
		1 8:30 WAS 2:00 Meth 101	2 8:30 PAI 11:00 SAH	3 8:30 PAI 2:00 Meth 101	4 11:00 SAH	5
6	7 11:00 SAH 8:30 WAS 2:00 Comp	8 8:30 WAS 2:00 Meth 101	9 8:30 PAI 11:00 SAH	10 8:30 PAI 2:00 Meth 101	11 11:00 SAH	12
13	14 11:00 SAH 8:30 WAS 2:00 Comp	15 8:30 WAS 2:00 Meth 101	16 8:30 PAI 11:00 SAH	17 8:30 PAI 2:00 Meth 101	18 11:00 SAH	19
20	21 11:00 SAH 8:30 WAS 2:00 Comp	22 8:30 WAS 2:00 Meth 101	23 8:30 PAI 11:00 SAH	24 8:30 PAI 2:00 Meth 101	25	26
27	28 11:00 SAH 8:30 WAS 2:00 Comp	29 8:30 WAS 2:00 Meth 101	30 8:30 PAI 11:00 SAH	31 8:30 PAI 2:00 Meth 101		

Meth 101=Methodology 101 Teaching Techniques for Ind. Lang.  
SAH=Sahaptin Workgroup WAS=Wasco Workgroup  
PAI=Paiute Workgroup COMP=Computer Workshops