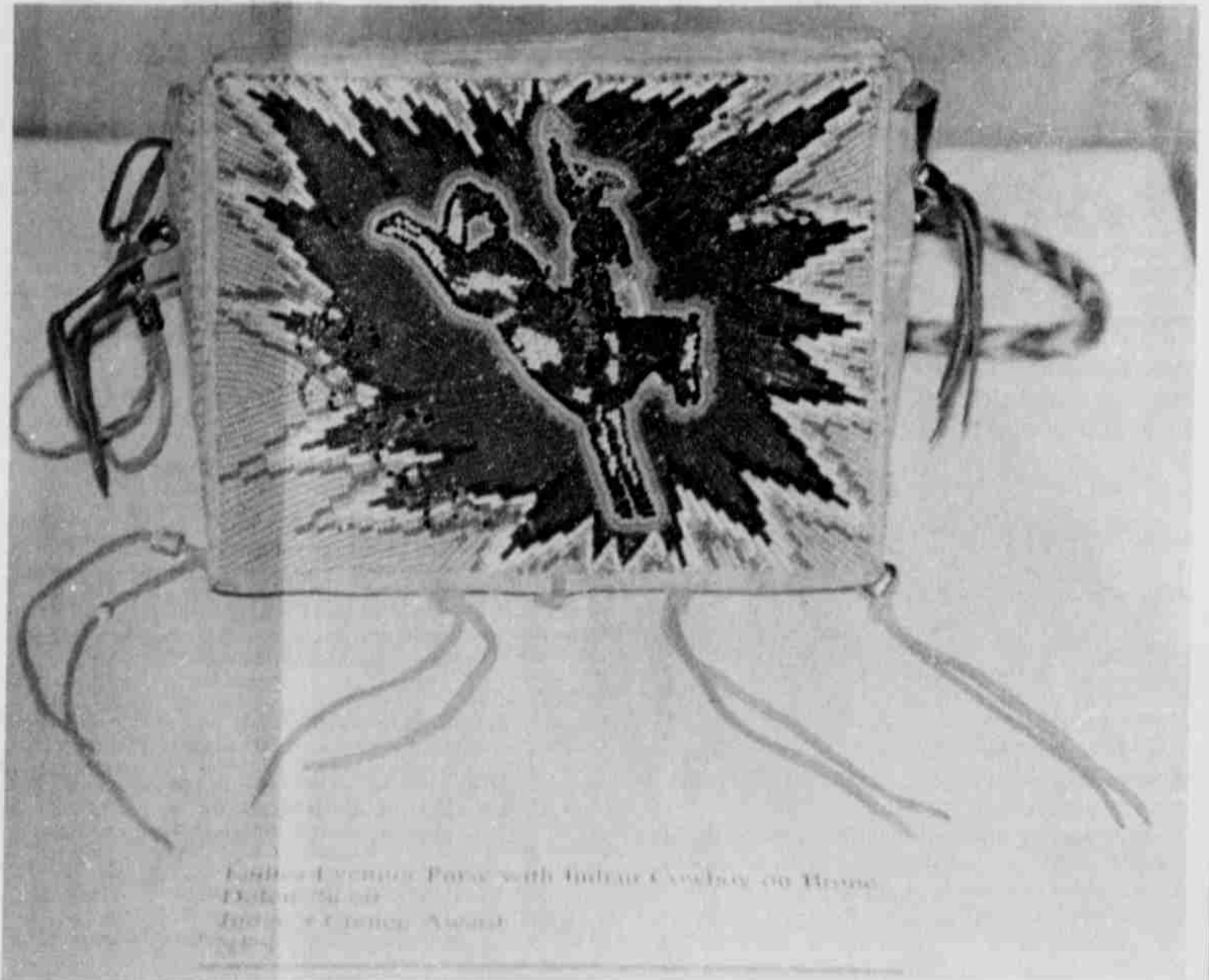


Fourth annual tribal member artshow draws beautiful entries

The Changing Exhibit Gallery at the Museum At Warm Springs is temporary home to beautiful items handcrafted by tribal members.



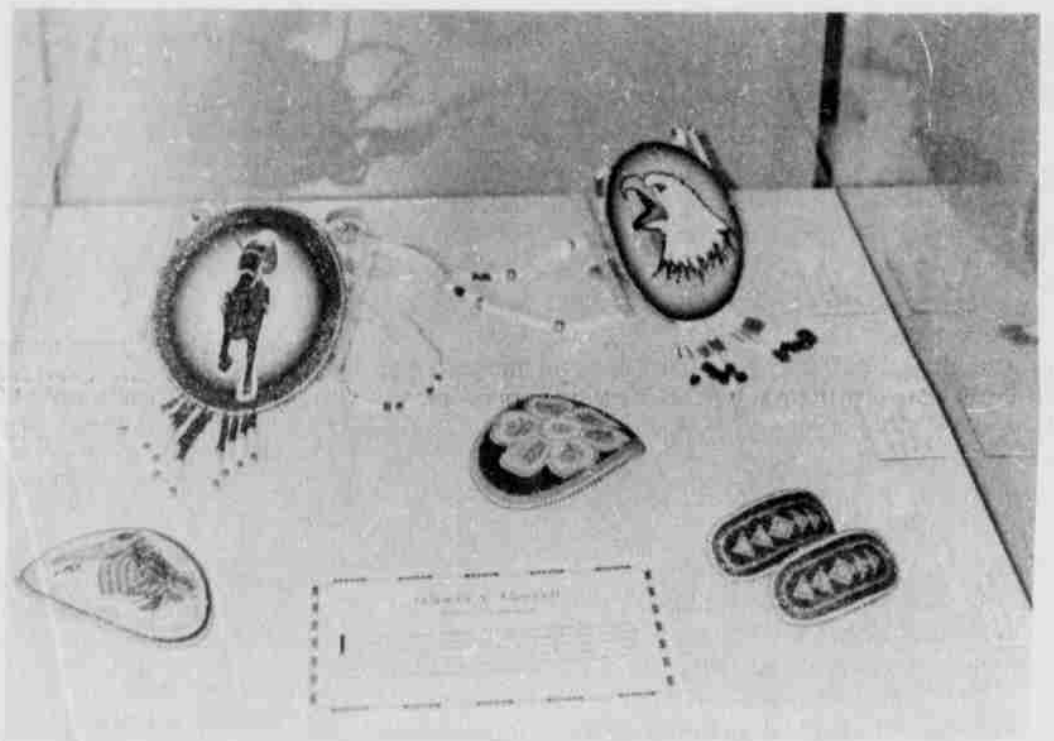
Evening purse, made by Delsie Scott, received the Judge's Choice Award.



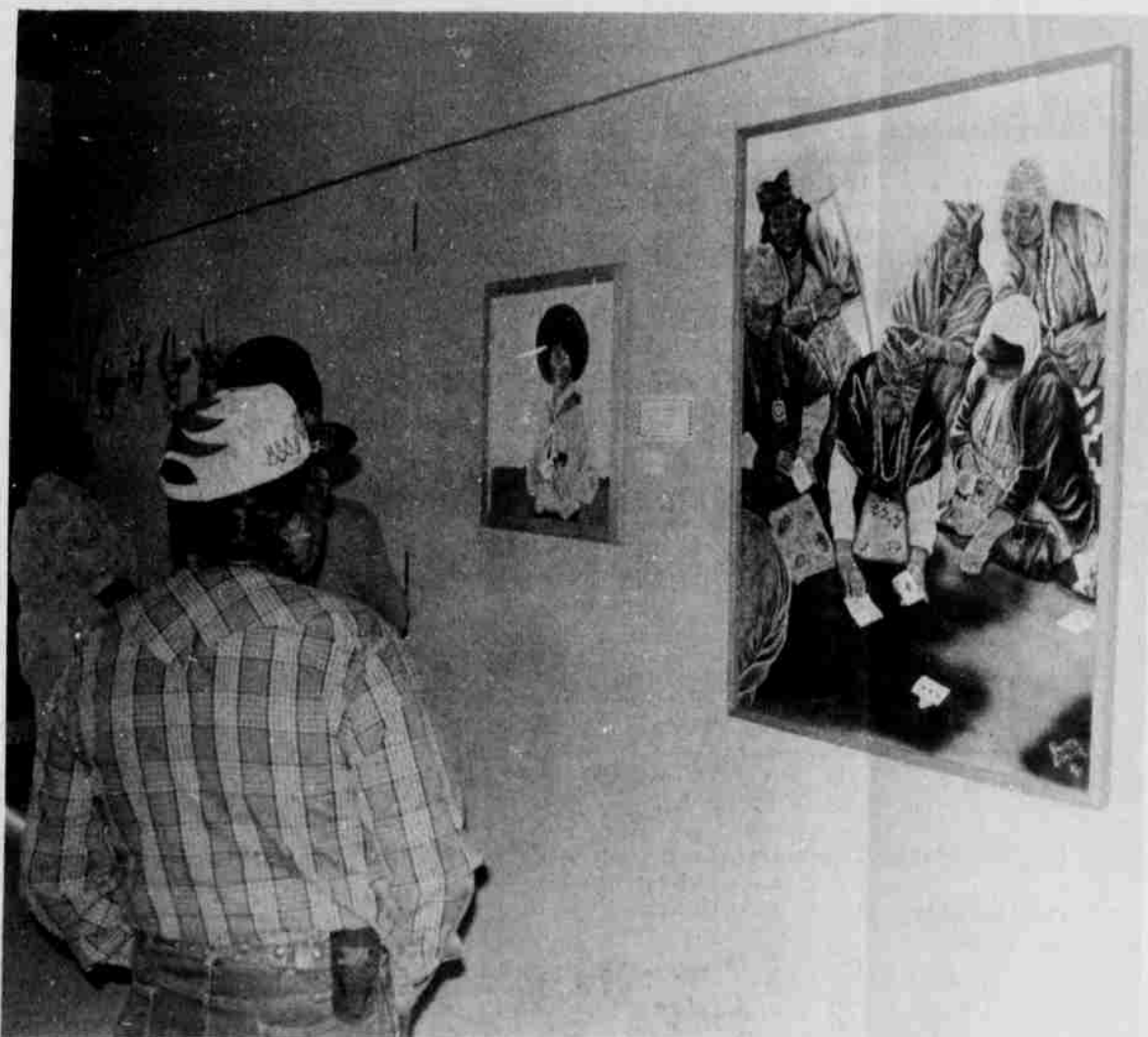
Delsie Scott proudly displays the plaque commemorating her participation in the show.



Geraldine Jim accept honorable mention from Timberline Lodge Executive and Willie Stacona.



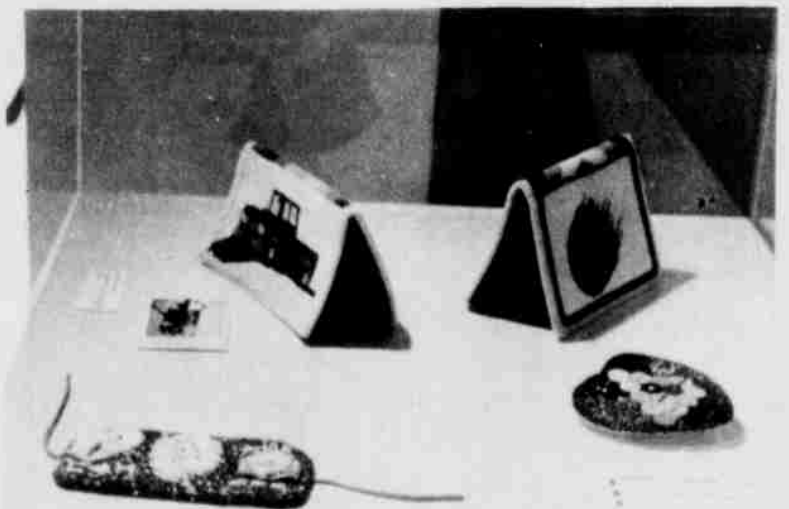
Wanda VanPelt's award-winning work was part of the show.



Wilford Jim views painting by Roxanne Langnese.



Simnasho Woman by Lillian Pitt.



LaDonna Picard's beadwork was part of Art Show.