

## Remodeled Kah-Nee-Ta Village due to open in April

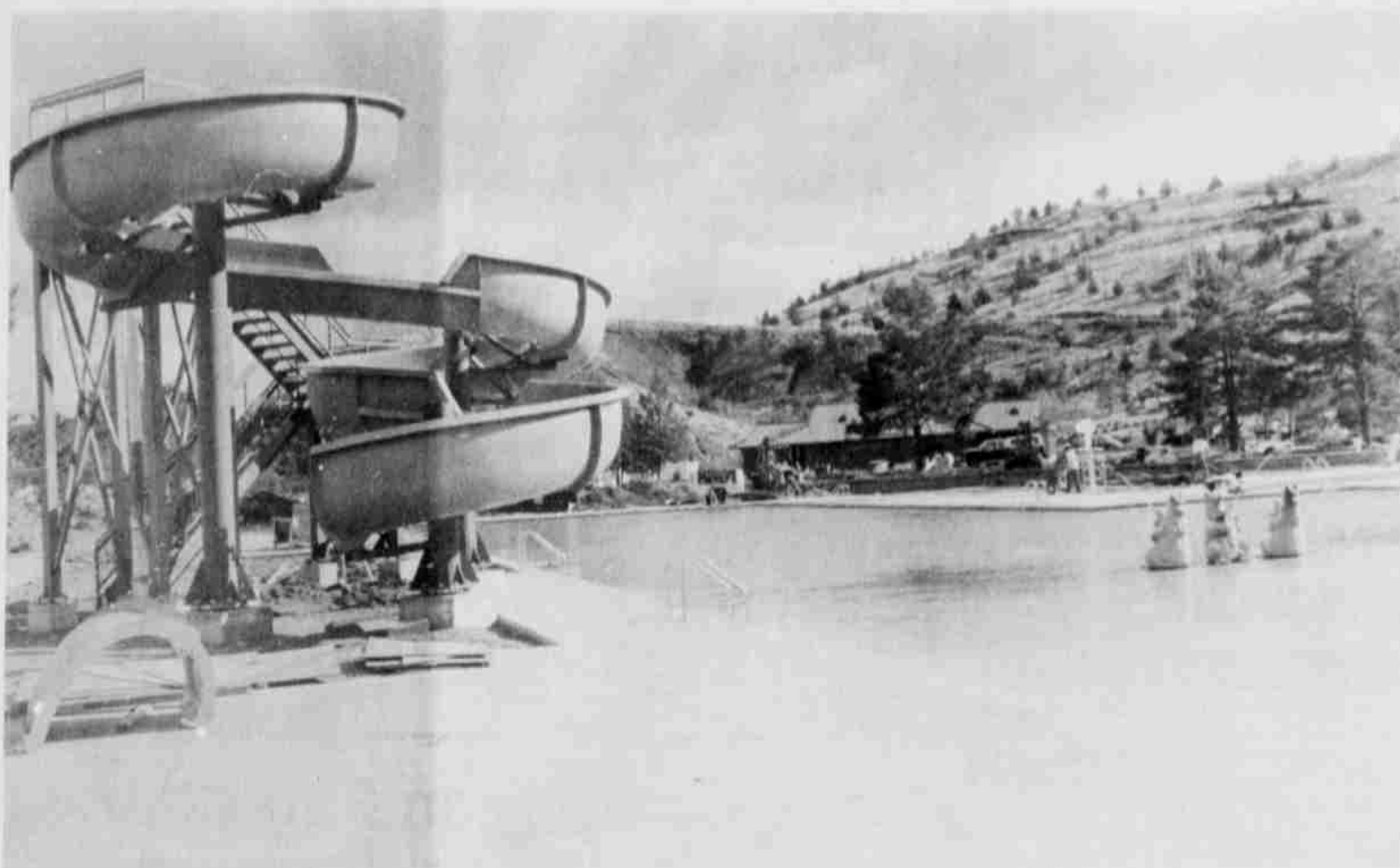
You may have thought, following the Flood of '96, that Kah-Nee-Ta Village was gone forever. The devastating waters ravaged the Resort, leaving virtually no building untouched. Construction equipment and earth moving vehicles followed the flood waters—in just weeks, the remains of the ruined buildings were gone, replaced by plans for the future.

The Confederated Tribes has received federal emergency funds to help with rebuilding costs. Insurance has also kicked in. The Tribes, themselves, contributed financially to the reconstruction efforts. A total of \$8.5 million will go toward rebuilding—about half of which will come from the Tribes.

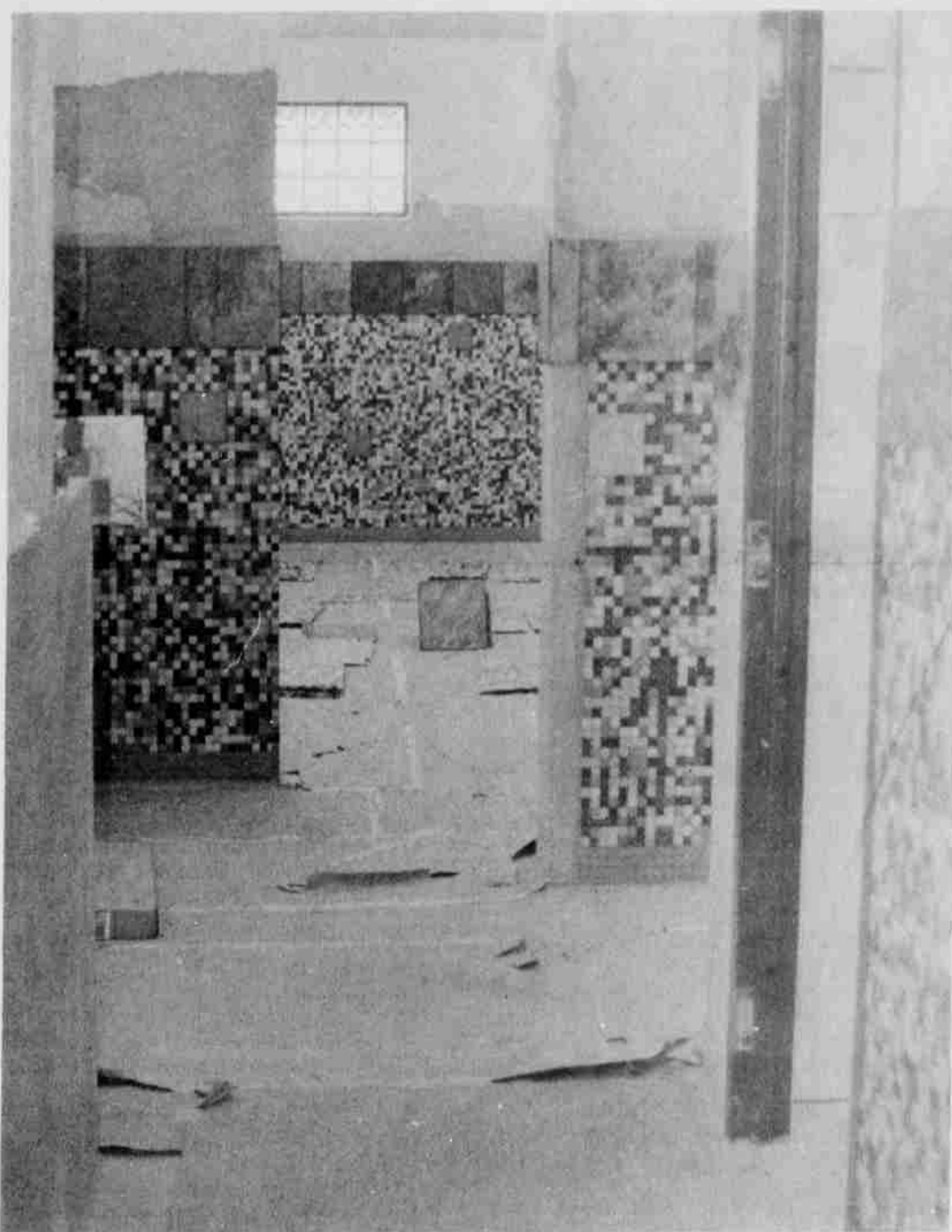
The Flood has had far-reaching effects on the Resort's financial stability, but, says General Manager ZuAnne Jarrett, year-end figures, though not final, could have been much worse. The Lodge, faced with infrastructure problems brought about by the flooding, fared well and was at peak capacity during the resort's busy season.

Unseen problems, such as decaying sewer lines and weakened electrical lines, have caused officials the proverbial Exceldrin headache # whatever. Those unseen problems have increased construction costs, but the project is coming in at or below initial estimates.

Jarrett expects the pool and teepee area to be operational by April, with the apartment-like rental units up and running in July. The teepees have been moved closer to the river, where the cottages were, and the new motel rooms are where the teepees were, at the base of the hillside. The changes make sense and should appeal to guests. There will be no charge for day-use parking and vehicle traffic in the Village will be limited to registered guests. The Village will include a basketball court, volleyball pit, putt-putt golf, a sand box, a spa with hot baths and other amenities as well as a snack shop and mini-market. The restaurant will be located on the north side of the river close to the parking lot. An interpretive center is also planned as part of the restaurant and will be the starting point for an extended trail system.



Village Pool, when complete, will include a modern water slide.



Village Bathhouse is ultra modern and visually pleasant.



Teepee area is greatly improved and include concrete pads and laundry and shower facilities.



Thirty units will be available to guests sometime in July.



Flood of '96 took its toll on the Village.