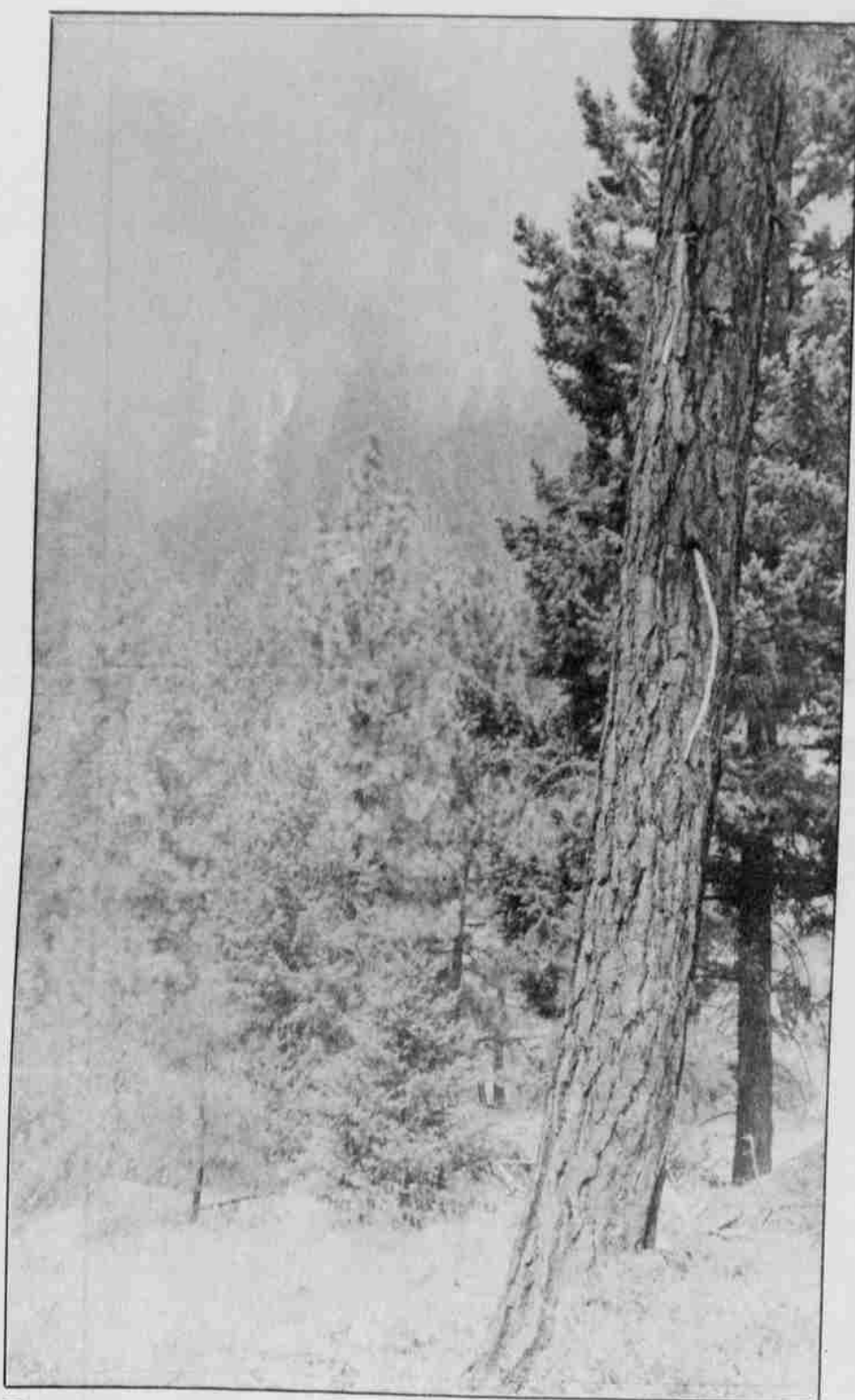




A first aid station provides immediate care for injured individuals and is an essential part of fire camp.



A cow skull was charred white.



Flames racing through the trees in Mutton Mountains created noise and their own path.



The blaze burned furiously between the Catholic Church and residences on Miller Heights.



A helicopter flies low over the Industrial Park on its way to retrieve water from a portable tank.



Fire crews were successful in protecting the homes on Walsey Lane and the Warm Springs Plaza.

Spilyay Tymoo photos  
by  
Bob Medina, Selena Boise and Donna Behrend