



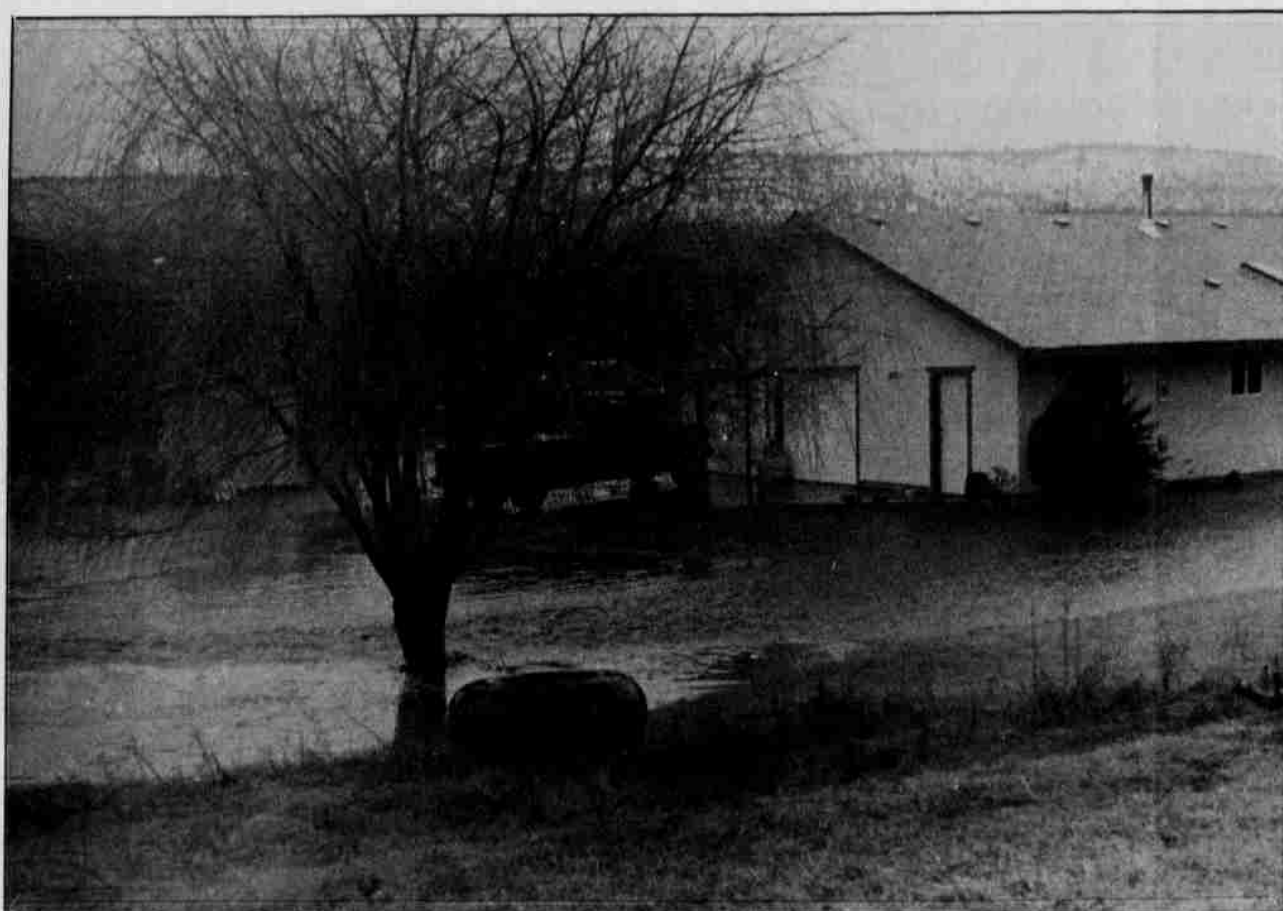
The approach to Thompson Bridge on Shitike Creek was completely destroyed.



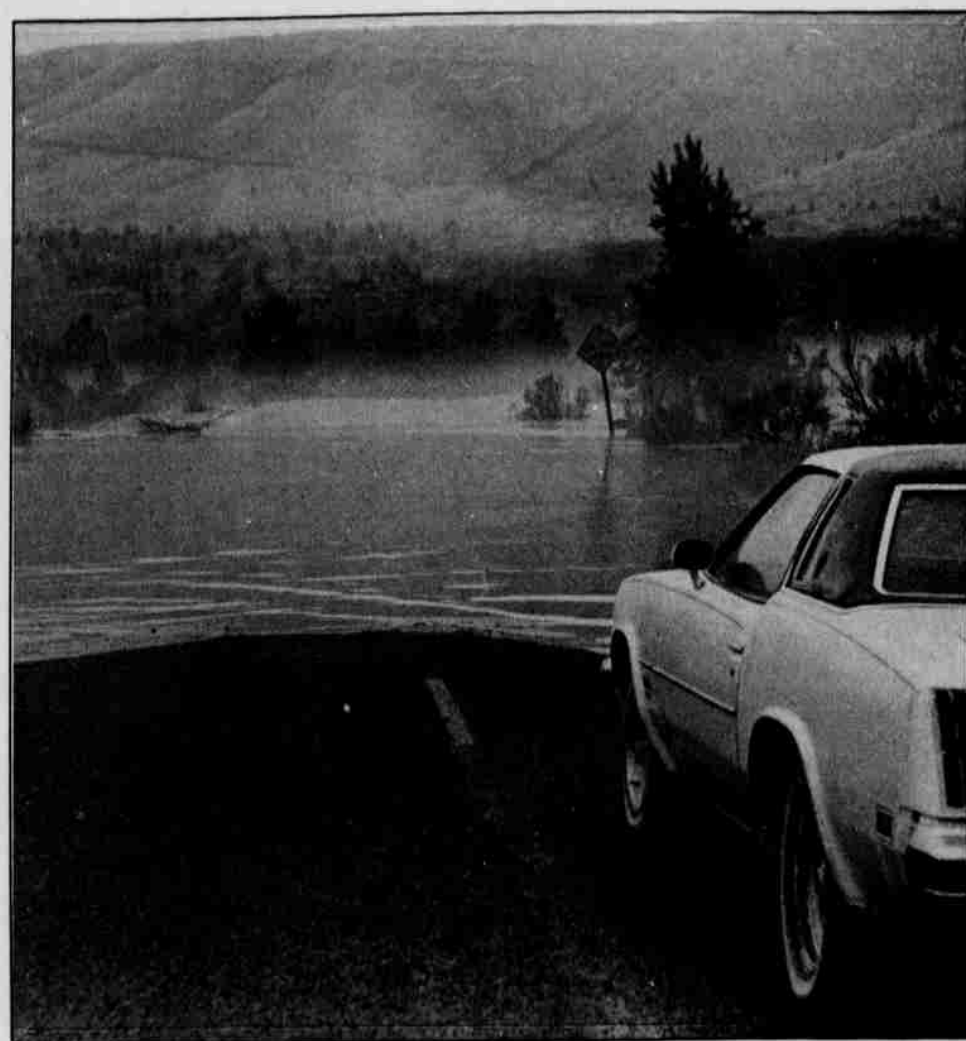
Tribal employees picked up their payroll checks at Warm Springs Market since work was cancelled for more than two days.



High water at the intersection of Tenino and Hollywood caused motorists to slow down.



The Beymer's emergency evacuation vehicle was ready and waiting.



The Heath bridge became a no-lane bridge during high water. The bridge remains out.