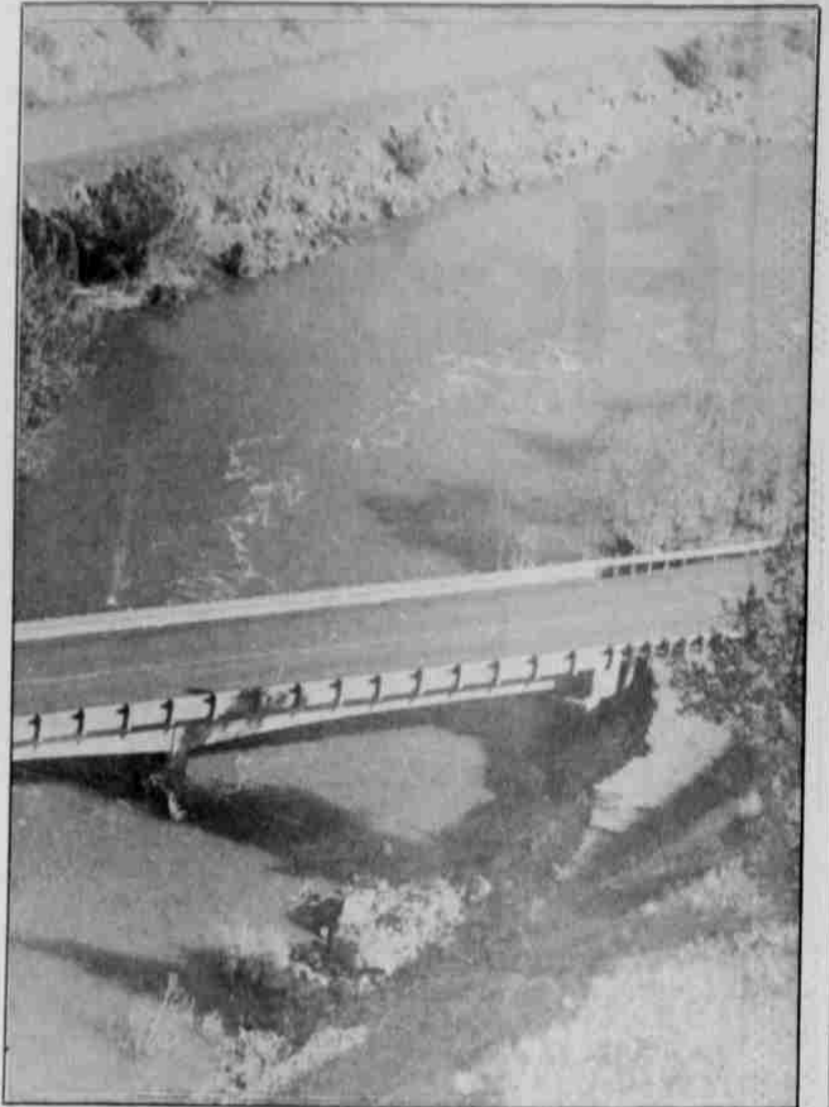


The lower-end of Warm Springs Forest Products was under water early on during the flood.



The approach to the bridge over the Warm Springs River was washed away. The bridge will remain closed for an indefinite period of time.



Wednesday's rains caused the Switzler road up Tenino Valley to wash out, trapping the Switzlers at home.



The footbridge joining the mill yard and office was washed away during the high water.



Elmer Quinn Park was boiling with high water.



Village pool decking was tossed around by the powerful current.