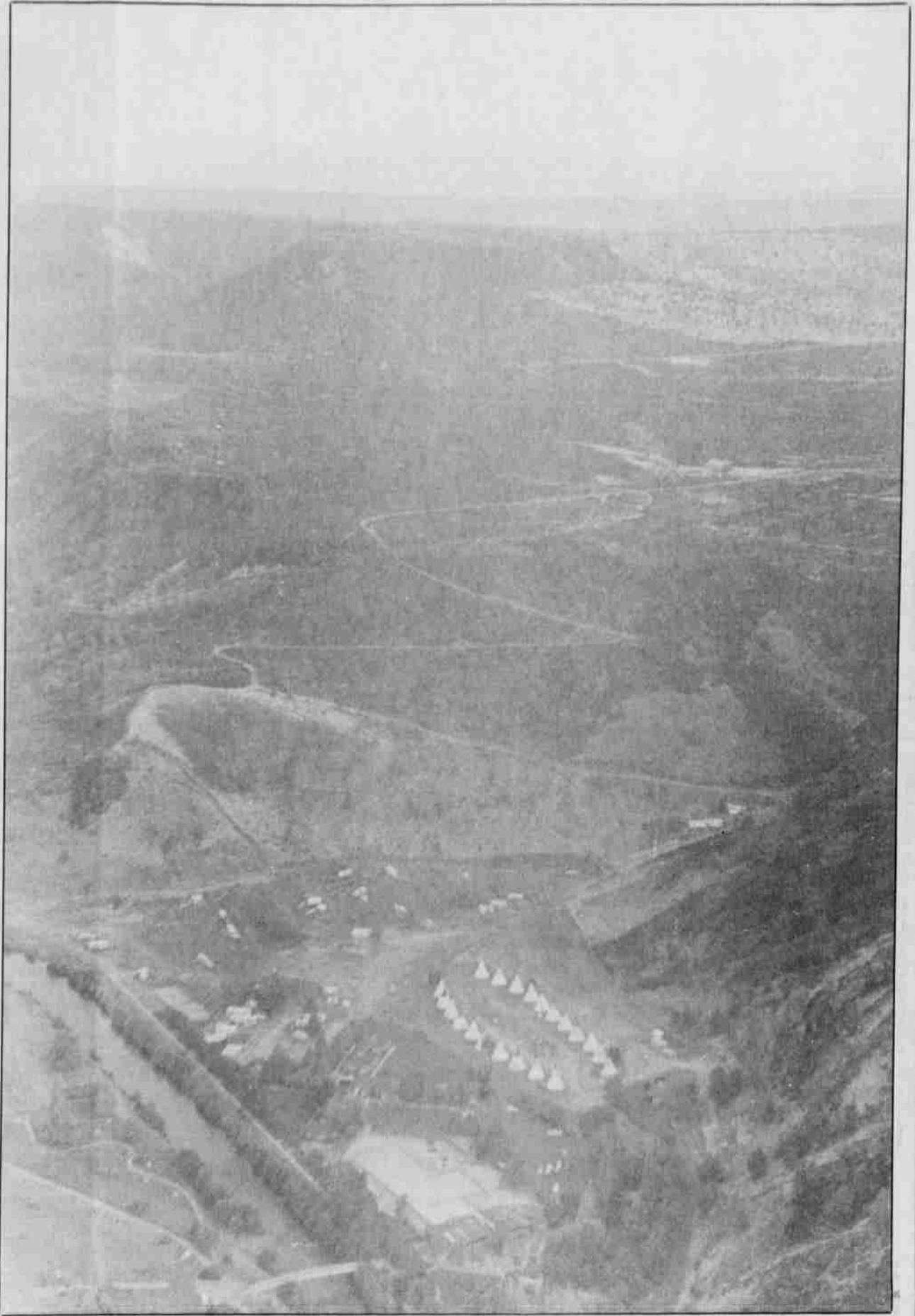




The dispatch center at Fire Management was the core of communications for fire crews.



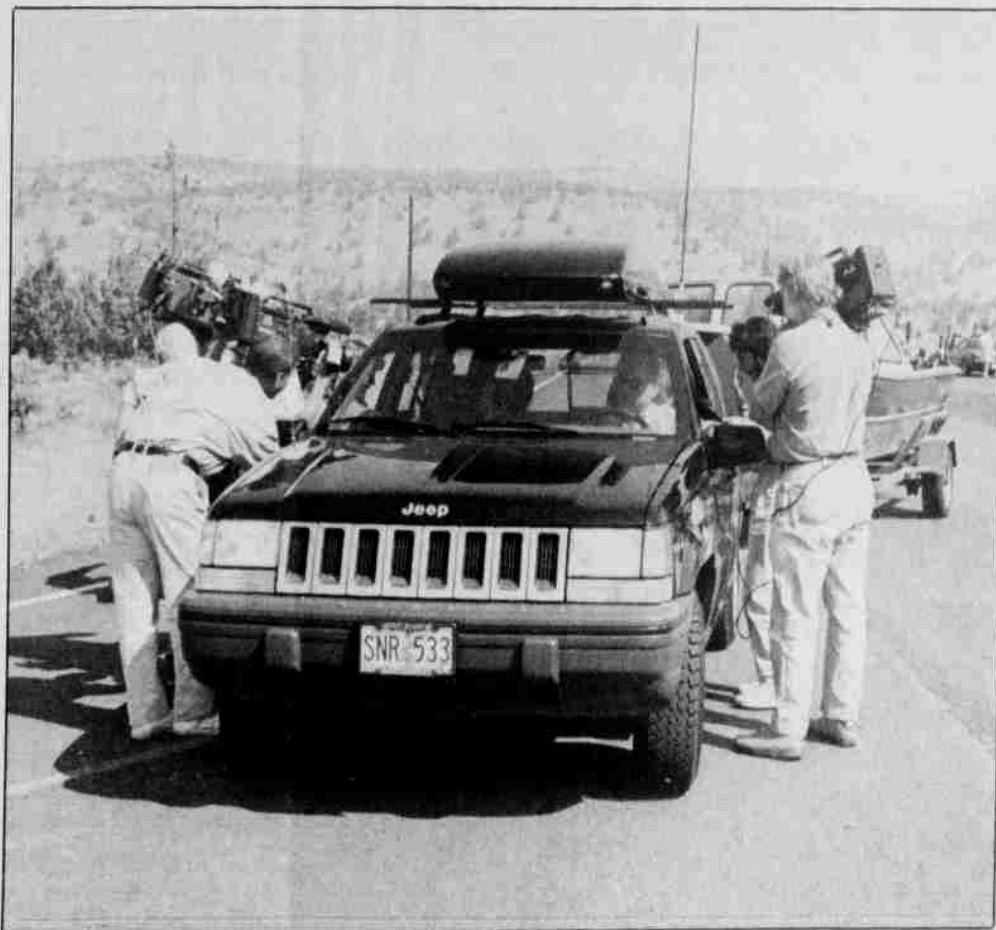
Aerial view of Kah-Nee-Ta Village shows how close fire actually came. The Resort reopened for business Thursday, Jly 28, but officials say that business is down as a result of the fire.



Sleeping pads were made available to fire fighters.



Only minor injuries, such as this sprained ankle, were sustained during the fire.



The media was in full force on Highway 3, anxious to get the "BIG ONE" and all the latest breaking news before competitors.



A backburn at Dry Creek looked rather ominous Wednesday, July 28. The fire was lit to prevent further damage by the wildfire.