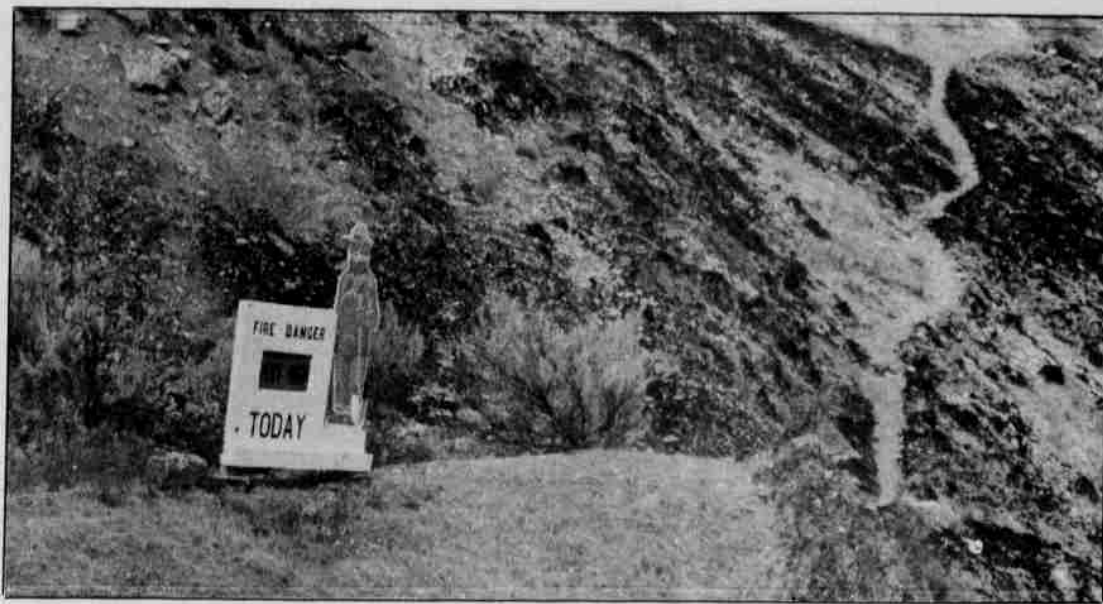




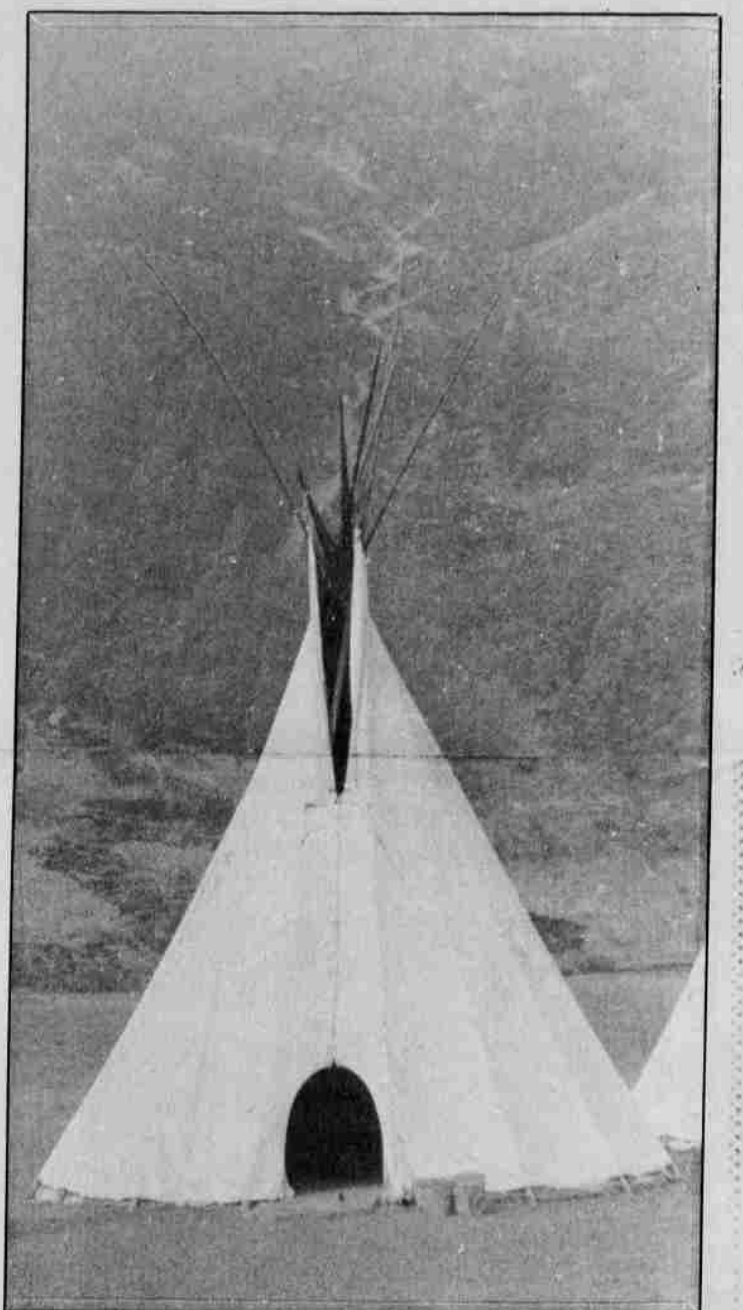
A weary fire fighter rests his head on a table following a meal.



Sleeping domes popped up throughout the Industrial Park area for the duration of the fire.



Smokey's fire level sign at Kah-Nee-Ta Village resisted fire and offered an understatement as far as fire danger.



The teepees at Kah-Nee-Ta Village were threatened by fire, as flames came within about 25 feet of the canvas structures.



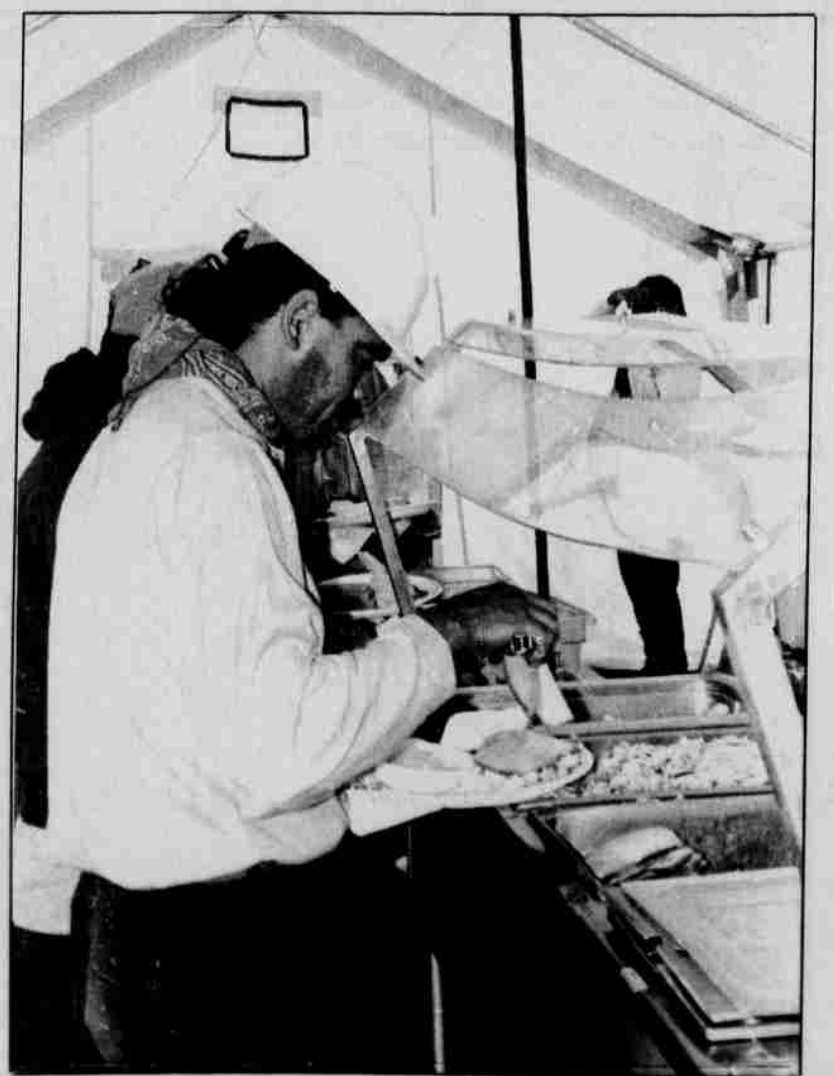
The Williams' home at the base of Eagle Butte is nothing but ruins following the fire that sped through the area.



All that remains of the barn at the LeClaire place near Simnasho is chared iron.



The Ponchos were lucky in that they only lost their old Chevrolet pickup. Fire came very close to their home in Wolf Point.



NuWay Catering served three meals a day to fire fighters.