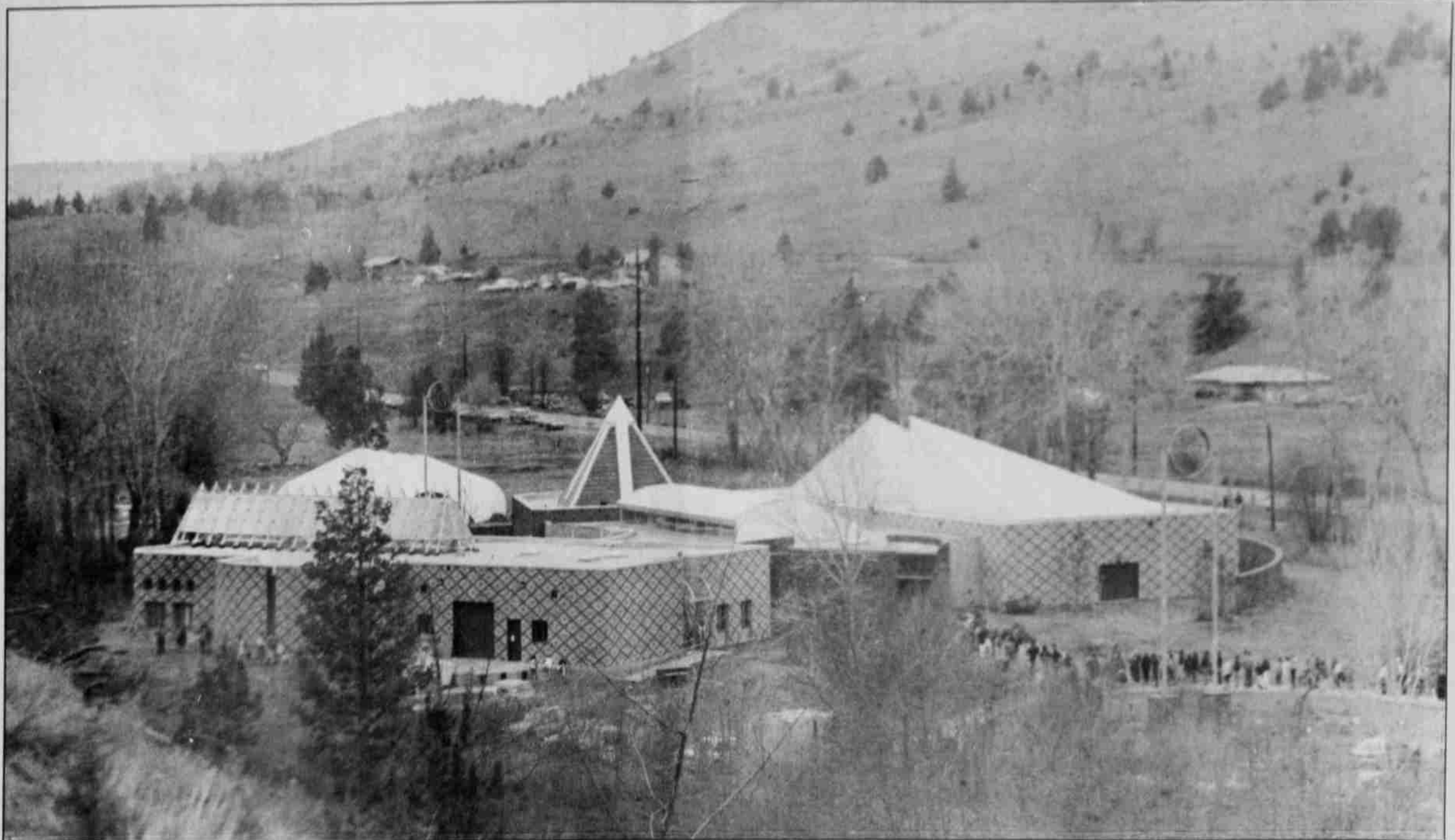


# Two-day celebration opens a tribute



Nearly 2,500 people visited the Museum at Warm Springs on Sunday, March 14. Visitors waited in long lines for nearly two hours before entering the Museum. Cars lined Highway 26 from the Museum to WSFPI.



"To the Great Spirit", a bronze work done by Allen Houser in 1992, graces the Museum lobby. Other pieces of Houser's work will be on display at the Museum until September.



A curious onlooker carefully examines the traditional outfit worn by Joe Tuckta during exhibition Sunday, March 14.



The Wasco Welcome Dance was part of the opening ceremonies during Saturday's activities.