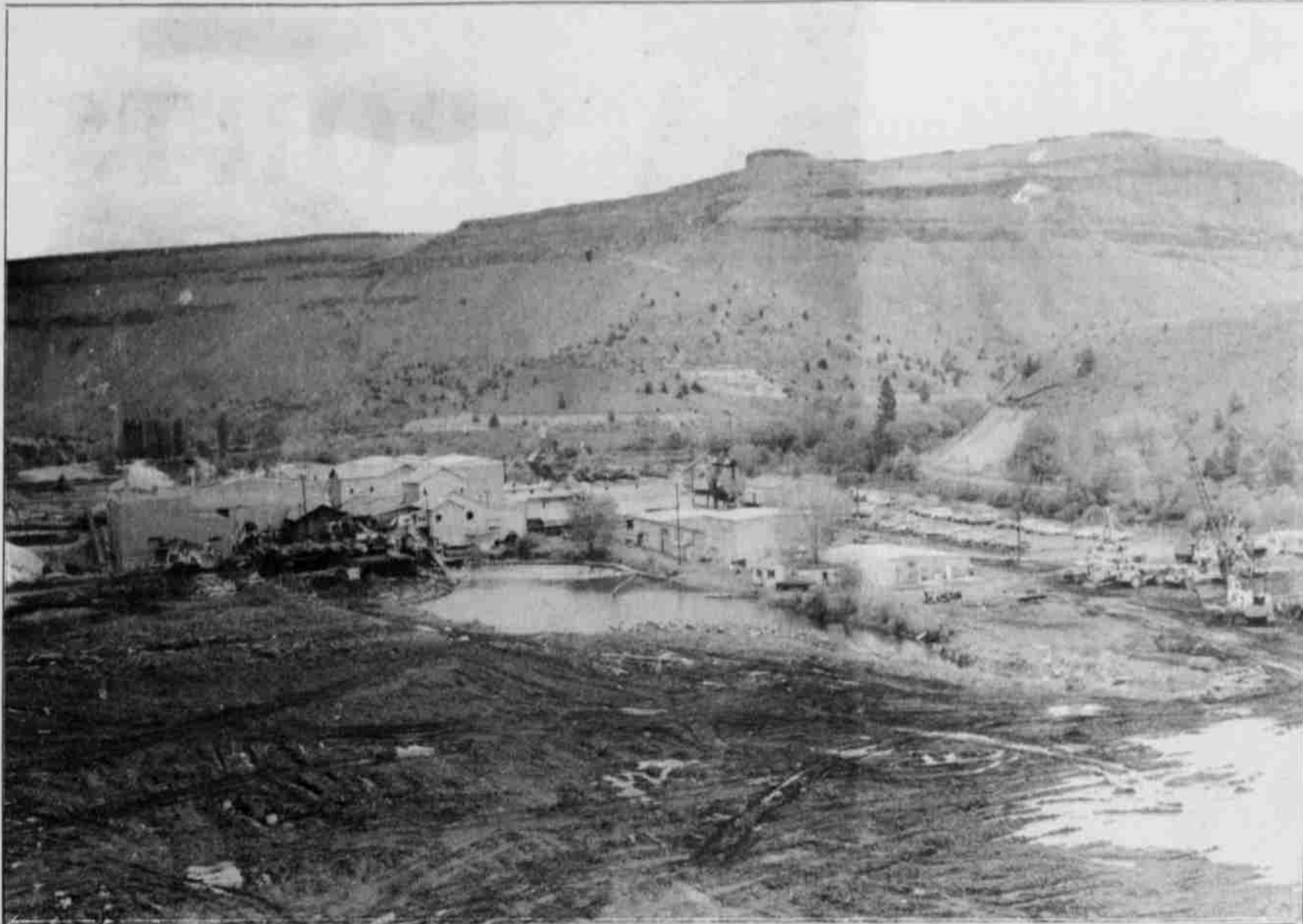


Addition to take WSFPI into future



The mill yard before renovation began May 1 looked different than it does now.

Work to make way for the new small log mill at WSFPI began May 1, 1989. The log yard looked like a huge sand box for Tonka toys as bull dozers, cranes and dump trucks moved and removed debris in the yard. Layer after layer of the smelly, decaying wood by-products were dumped on the hill behind the mill.

Once all the debris was removed and the area was leveled, loads of gravel and soil were brought in to help stabilize the area.

The log pond is now about one-third smaller. The space once occupied by water is now almost free-way smooth and nearly ready to accommodate part of the new operation.

Construction on the actual building is expected to begin later this month with completion set for about a year or so later.



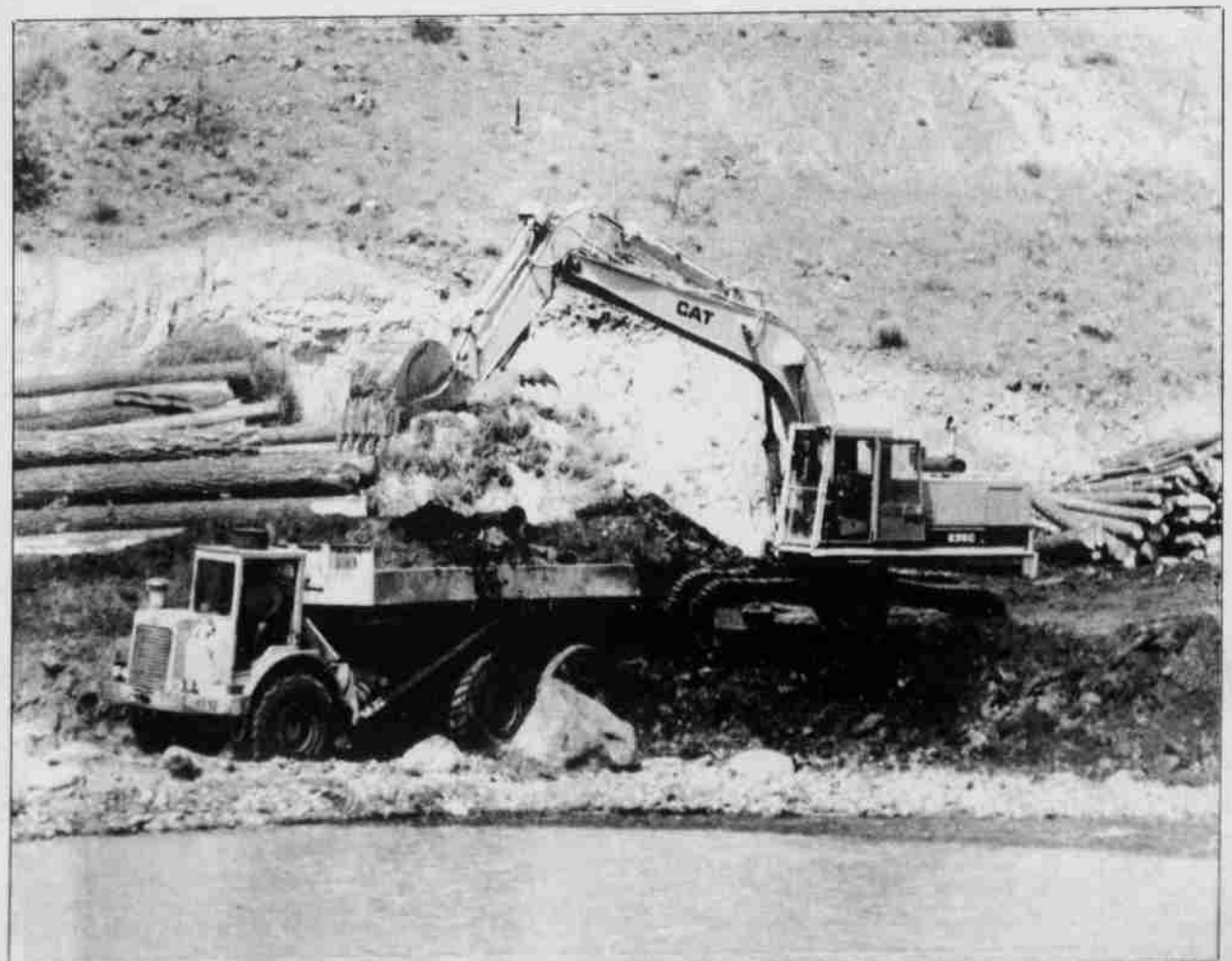
While a roller and dump truck prepare the yard for future construction, a shovel, in the background, continued to unload log trucks.



The log pond has been reduced by one-third since renovation began.



A smaller pond was necessary to make way for the small log mill building.



It was Tonka toy land while a CAT loaded 22-cubic-yard dump trucks with debris.

*Spilyay Tymoo photos
by Donna Behrend*