

Phone company offers alternatives

If you make few local phone calls, should you pay the same for your service as a person who makes lots of calls? Logically, no. And, that's why Pacific Northwest Bell gives you three choices.

All three options give you private line service and unlimited incoming calls, without any additional charge. Depending on how you use your phone, the monthly phone service plan you chose can save you money.

PNB Service Choices

Premium Flat Rate Service. This is the traditional and most popular local service choice. Depending on the size of the telephone exchange in which you live, the monthly rate ranges from \$18.05 to \$20.33 per month. It is the right choice for

people who make a lot of local calls.

Basic Measured Service. For \$13.35 per month, you receive \$3 of local calling, without any additional charge. Beyond the \$3 allowance, when and where you call, and how long you talk and how often you call will determine your monthly charge. This service is designed for the customer who makes a moderate number of local calls each month.

Budget Measured Service. Priced at \$11.35 per month, this is PNB's least expensive monthly service. There's no \$3 allowance, and each call you make adds to the monthly charge. This is the right service for customers who make few local calls each month and who generally rely on their phone service as a "life-

line" to the outside world.

All of these rates include a \$2 FCC Subscriber Line Charge. Charges for optional features, such as Convenience Calling or Touch Tone service, are excluded.

Measured calls discounted

A unique advantage of measured service is that local calls you make weekdays between 5 p.m. and 8 a.m., plus on weekends and holidays are discounted 35 percent.

You also should know that about 80 percent of all local calls are within the shortest of four mileage bands: 0-8 miles. For this distance, a 10 minute call would cost 23 cents. For calls of 17 miles or more—the longest mileage band—a 10 minute call would cost 38 cents.

Which monthly service is right for you?

The right choice for you depends on your calling habits. One way to find out which plan suits you best is to calculate a monthly total depending on when, where, how long you talk and how often you call. An easier way is to try the plan that seems to fit your needs, then switch back if you don't save money. There's no charge for switching.

If you have questions about any of the PNB monthly service plans, call PNB's business office or its toll-free Let's Talk Bureau, at 1-800-555-5000.

"Equal pay" can ease burden

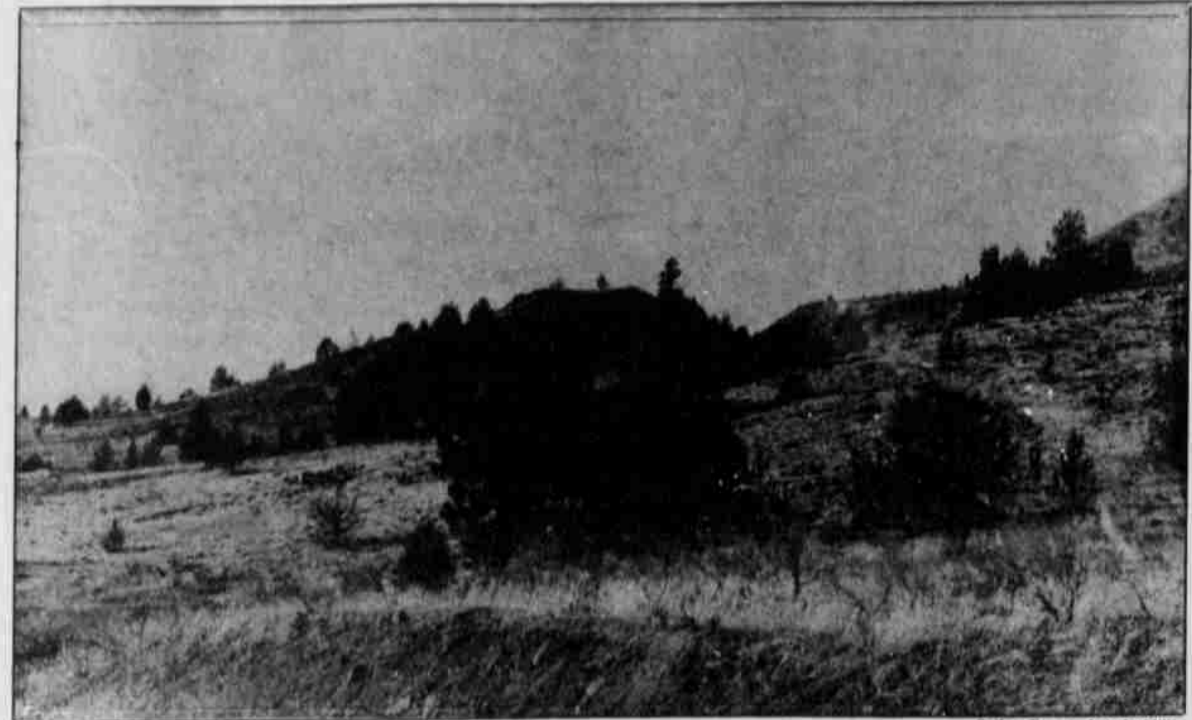
In "naturally air-conditioned" Oregon, the energy costs of being comfortable comes all at once—in the winter.

So if the thought of last winter's utility bills still results in a few shivers, it might be time to see what can be done to take some of the sting out of winter heating bills next year.

One of the newer approaches is Pacific Power and Light Company's innovative "Equal Pay" plan which is particularly appealing to senior citizens or others living on a fixed income, said Dennis Quaid, Madras manager for Pacific Power.

"More often than not, an average customer spends half their total annual energy budget in only two months each year, December and January. Worse, this peak in heating costs comes right in the middle of the holiday season when many of these customers would like to use their limited financial resources for other purposes."

"To make it easier for these customers to stay warm during cold weather without financial worry, we offer enrollment in "Budget Balancer" each spring," said Quinn. "Once a customer enrolls, the amount needed for electric energy for each of the next 11 months becomes fixed."



Spilyay Tymoo photo by Miller

The latest winner of the Geo Quiz photo was Deborah Jackson, who correctly identified the photo as being just east of Nee Nee Springs, just north of Red Lake, in Simnasho. Here is another photo for someone to call in its exact location and win a year's subscription to Spilyay. Have it mailed to a relative or a buddy or a loved-one. Call 553-1644 with your answer.

Kupans for sale

Production design and custom made Kupans are available at Green Spot Welders in Madras. Stop by to see what's available or call 475-2519 for more information.

To enroll or obtain information on the Pacific's Budget Balancer program, Quinn suggested either calling the Madras Office by telephone or dropping by so a customer office representative can explain how the program works and determine the exact amount of the fixed monthly charge.

Enrollment in Budget Balancer this year will be open between April 20 and May 19, said Quinn.

Court Notice

In the Matter of:
Anthony Raymond Valde
Milton Holliday
Petitioner
Notice of Hearing for change of name
Case No. D047-87

The above individual has filed a Petition with this Court to change his/her name from Anthony Raymond Valde to Anthony Raymond Holliday. A hearing on this matter has been set for 9:00 a.m., on the 24th day of April, 1987, at the Warm Springs Tribal Court. Any person who may show cause why this Petition should not be granted must file such objection in writing on or before the 24th day of April, 1987. This shall be done in writing and filed with the Court. Dated this 23rd day of March, 1987.

Lola Sohappay
Tribal Court Judge

Remove studded tires

Spring is officially here, the clocks have been moved ahead one hour for daylight savings time and now all studded tires must be removed from cars by midnight, Thursday, April 16.

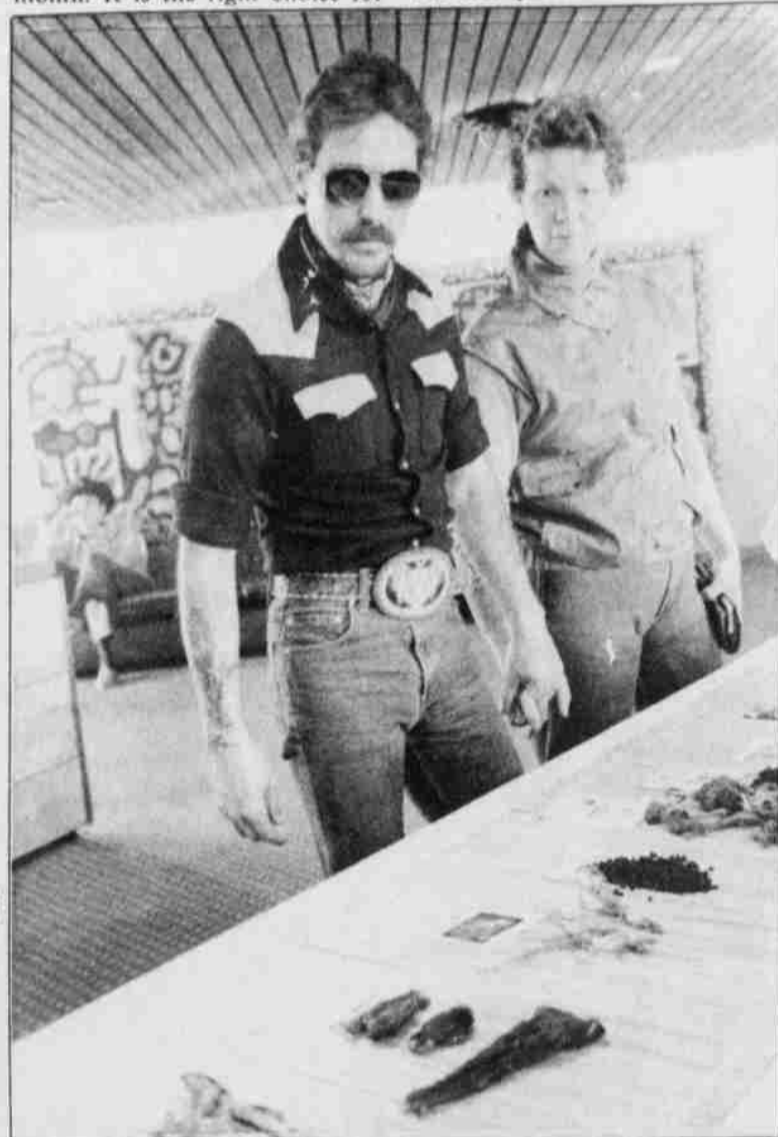
Math skills

Continued from page 7

ance addressing specific needs in pre-college science and mathematics instruction were developed by NASEA. These three types are: 1. content assistance to strengthen the quality of instruction, content mastery and teaching skills of staff in selected schools; 2. Science and cultural assistance to strengthen the relationship between classroom instruction and the cultural perspectives students find outside the classroom; 3. Science networks and systems assistance to develop mechanisms to strengthen the sharing of needs, plans, program content and successful instruction models between schools in selected geographic areas.

NASEA needs your help, financial support is needed to carry out these plans. Funding for general operations support will enable the organization to function more effectively. This will also enable the executive director to carry out the purposes for which NASEA was conceived and toward so many individuals who have given instinctively of their time. NASEA is affiliated with American Indian Program of the Phelps-Stokes fund and grants for the organization or its projects are being received by the fund for NASEA. The NASEA expects to develop sources of future self-support as, for instance, through sales of its curriculum materials. You can make direct contributions, become an association member or assist in identifying sources of support in your area for NASEA.

For further information, contact Gary Allen, Executive Director of the Native American Science Education Association, phone (301) 262-0999.



The Root Feast Art Show held at Kah-Nee-Ta April 4 featured the work of local artists and helped present the culture of Warm Springs to visitors. Tom and Marla Stites view display of plants used traditionally by Warm Springs people.

Infant/child CPR different

In a photo published in the last issue of Spilyay Tymoo Cardio-pulmonary resuscitation was being administered by Cindy Larson and Arlene Boileau. It was explained that the CPR was being performed on an infant. That was incorrect according to Warm Springs Fire and Safety CPR instructor and

training officer Harvey Yordy. The dummy lying on the floor was one of a child. An infant is usually held and only finger tips are used for depressions.

Classes in CPR are offered monthly for those interested. Call 553-1634 to register and for more information.



Corrections officer Luke Sanders spent an hour with the students in Miss Soliz's classroom assisting in the building of models. Sanders, who recently underwent heart surgery, has not been able to return to his job full time. Sanders went to assist the teacher as a part of a public relations gesture of the Police department.

SUBSCRIPTION TO SPILYAY TYMOO

SEND SUBSCRIPTION TO:

SPILYAY TYMOO, PO BOX 870, WARM SPRINGS, OR 97761

NAME _____

ADDRESS _____

CITY _____ STATE _____ ZIP _____

SUBSCRIPTION RATES: \$6.00 PER YEAR IN THE U.S.
\$12.00 PER YEAR OUTSIDE THE U.S.

All members of the Confederated Tribes of Warm Springs will receive the Spilyay Tymoo at no cost. Spilyay Tymoo is published bi-weekly by the Confederated Tribes of Warm Springs.



AMERICAN INDIAN CULTURAL RESOURCES CONFERENCE

Kah-Nee-Ta Resort
Warm Springs, Oregon

May 7-9, 1987

sponsored by

The Affiliated Tribes of Northwest Indians
The Association of Oregon Archaeologists
The Confederated Tribes of the Warm Springs Reservation of Oregon

This conference is a forum for the various Northwest tribes, anthropologists, museum professionals, historians, land managers, and all others interested in American Indian culture, to take council in discussing common concerns. Its purpose is to foster a spirit of regional cooperation in the understanding of past and present lifeways of indigenous people of the Northwest, and the maintenance of native cultures and traditions.

The conference format consists of a series of workshops designed for active participation of all in attendance. Topics include cultural resource management and legislation, burial and sacred object repatriation, public education, the responsibilities of researchers and land managers to the Indian community, and the establishment of regional communication networks.

Senior party planned

Graduation is nearing for seniors at Madras High School. And to commemorate the end of their 12 years in school, seniors are encouraged to attend the chemical-free, all-night party at Griffiths Sports Center in Beaverton Saturday, May 30.

Students will leave the high school immediately after graduation, travel to Beaverton for a night of activities and return to Madras at 6:30 a.m. for breakfast at the Madras Elks Lodge, all for \$15 per person. Registration can be paid to Janet Cowden at the school.

Local merchants and parents are donating prizes for a drawing that

will be held. A special drawing will be held for those students who register early. All prizes will be displayed at the high school.

Five committees have been formed and parents and other interested persons are encouraged to participate. The five committees are donations, food, decorations, entertainment and publicity.

If a student is unable to attend because of financial difficulties, they are encouraged to contact either Steve Hillis or Julia Blincoe at the high school so that arrangements can be made for the student.

For further information contact Peggy Boyle at 475-2052.

PP & L to install sign

A new electronic outdoor sign capable of carrying a wide variety of messages including weather information and public service announcements will soon be installed at Pacific Power and Light Company's Madras office.

In addition to automatically displaying and temperature 24 hours a day, the new sign will have the capability of displaying a wide variety of information including information more efficient uses of energy along with non-commercial community announcements, said Den-

nis Quinn, manager of Pacific's Madras District.

Quinn said the new sign is presently being built in Bend and should be installed in about six weeks. The sign will be the first of its type for Pacific Power.

Unlike similar signs which display only weather information or require pre-programming messages, the new Pacific power sign has the capability of being programmed from a computer keyboard in the office.