

Warm Springs News

OREGON HISTORICAL SOCIETY
1230 SW PARK AVE
PORTLAND, OR 97205

25°

Spilyay Tymoo

Coyote News



VOL. 10 NO. 13

WARM SPRINGS, OREGON

JUNE 21, 1985

Crews join to battle blaze

by Donna Behrend

A control burn at the Warm Springs dump near Dry Creek scheduled for this week was hastened last weekend by high winds and unusually dry weather conditions. Warm Springs was the site of the state's largest range fire of the year as approximately 2,600 acres of grass, sage brush and juniper were scorched by the fire. Although it is unknown exactly what caused the fire, it is suspected that someone may have thrown a match or other burning material into the dump and that the wind caught the flames that touched off the extremely dry grass surrounding the dump.

Over 270 firefighters from the B.I.A., Tribe, U.S. Forest Service, BLM and Yakima battled the blaze for almost two days before getting it contained Monday morning. The fire was controlled by 6 p.m. Monday evening and mop-up procedures will continue through the week.

Two families were evacuated by Warm Springs Fire and Safety and North Unit Fire Department at the onset of the fire at 3 p.m. Saturday afternoon. Andrew David, who was not at home at the time, and Maryann Meanus waited about four hours until their homes were out of danger. The water treatment plant, in the middle of the fire was threatened, but no serious damage occurred. At one point on Sunday afternoon, it was thought that WSFPI and the Wolfe Point housing subdivision were in danger but the fire was halted before it reached

those areas. Alice Florendo was also alerted about the rapidly-spreading fire.

According to Forest Manager Bob Harned there was very little resource damage. Winds of 15 to 20 miles per hour fanned the fire during day time hours and let up at night. This in addition to the average temperature being 90 degrees and the relative humidity at 14 to 15 percent, caused the fire to be very difficult to control. There was also "a real shortage of manpower," said Harned. It took firefighters from two different forests and three different ranger districts to make up one crew of 20. Approximately 35 Warm Springs residents worked on the fire. 20 of whom comprised the Warm Springs fire crew.

Harned and acting fire management officer Dan O'Brien each stated that the dump has caused numerous fires in the past. O'Brien stated that he was "surprised it hasn't burned there more frequently." Harned said that the dump is a "community problem. It has burned the north half of the reservation and it will burn the west half if we continue to handle it the same way." He suggested that it be a controlled dump so that someone would be at the site at all times to ensure that future fires do not get out of control.

Estimated cost of the fire has reached \$270,000 including approximately \$65,000 for the ten or 11 loads of fire retardant dumped from bombers that came out of the Wenatchie, Washington and Redmond Air Centers.

Copter crashes on Webster Flat

by Pat Leno-Baker

A helicopter pilot, Randolph Floyd, 24, was taken by Emmanuel Hospital Life Flight helicopter from Webster Flat following the crash of his aircraft on June 13.

On a routine flight, Floyd experienced difficulty with his craft and he radioed the Madras airport. The message was monitored and relayed at the airport by Tribal pilot Jerry Armstrong.

At that time the pilot landed the craft on Webster Flat. Warm Springs police officer Chris Still observed the craft land and went to the scene. A mechanic was dispatched from the airport to assist the pilot. The mechanic repaired a faulty fuel line. Floyd then tested the craft and hovered about ten minutes, he then started to return to the Madras airport. According to statements from the mechanic and Still, the

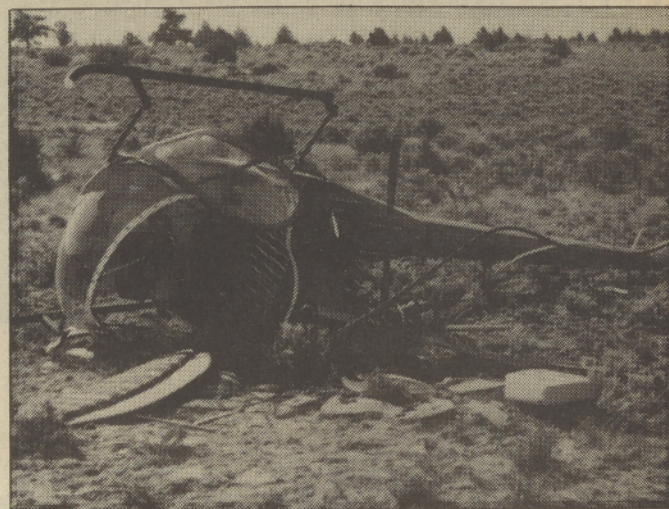
craft flew about a mile when it appeared to drop out of sight and then it "bounced back into view and then dropped again."

Still and the mechanic drove to the crash site where he apparently dropped and found the copter on its side facing north. The pilot suffered serious injuries. At that time, Still requested an ambulance and rescue crew.

The pilot appeared to be suffering spinal and back injuries. Emergency Medical Technicians responded to the scene. It was decided at that time that moving Floyd by ambulance over the rough terrain was not a wise move, according to Fire Chief Jerry Huff.

So Floyd, was removed from the scene by the Life Flight helicopter. Life Flight was called and they prepared to fly over

Continued on Page 2



Pilot Randolph Floyd was seriously injured when his craft crashed on Webster Flat.



Whitewater fun

Shitike Creek gabion provides whitewater in which youngsters can play on hot summer days.

Pi-Ume-Sha celebrates 1855 treaty

by Lenora Starr

Pi-Ume-Sha is the powwow that almost wasn't and so this year it is extra special.

According to Bernice Mitchell, coordinator of the Pi-Ume-Sha powwow the burden of raising \$14,000, the cost to sponsor the powwow and the loss of their son Jackson "Big-O" Mitchell was almost too heavy. How-

ever, with a little help from Tribal Council and a few encouraging words, the annual Treaty Days Powwow will be celebrated again this year.

Sonya Heath, Saraphina Scott and Tonya Mitchell are the three girls who will be vying for the title of Miss Pi-Ume-Sha.

Recent high school graduates,

the girls will be selling raffle tickets with the title going to the girl with the highest amount of ticket sales. Tonya Mitchell has special aspirations for the title as she will be donating per centage of her ticket sales toward a memorial for her brother. In regards to Tonya's bid for the title, her mother said, "She's doing it for him."

The encampment will open Thursday for the visitors to set up camp and the Pi-Ume-Sha events will officially begin Friday with the grand entry at 7

p.m.

The celebration does not limit itself to the encampment grounds for there are events being set outside the circle of the encampment such as the Tenth Annual Pi-Ume-Sha Rodeo and the tenth Annual Stickgame Tournament. There will also be a marathon, traditional parade, softball and golf tournament.

This year marks the sixteenth annual celebration. Traditionally, Pi-Ume-Sha, meaning "good-times" is a celebration of the 1855 treaty.

Apportionment discussed

by Marsha Shewczyk

During the last Tribal Council election the first representative from the Agency district took his seat with 255 votes. It took only 118 votes to seat the first choice Simnasho representative and 32 votes to place the Seekseequa representative on the council. The imbalance was noted.

Concerned that a vote in one district weighed as much as seven times more than a vote in another district, and concerned, too, that a violation of "one man, one vote" sited in the equal protection clause of the American Civil Rights Act of 1968 was being violated, tribal member Rudy Clements appealed to Tribal Council, encouraging them to open the matter for public discussion.

In Clements' letter to Tribal Council dated March 17, 1985, he appealed for open meetings. "I am aware that comments have been expressed in recent public meetings on this matter and feel that the people must have an opportunity to express their feelings and concern about our present system of placing leadership on the Tribal Council."

The Simnasho District meet-

ing held June 18 focused attention on this subject of apportionment. Confusion as to the meaning of the term was widely expressed by Simnasho District voters.

According to author of the initial letter to Tribal Council regarding apportionment, the term refers to geographic divisions in which people are registered to vote with application for proper representation for each area.

The possibilities for reapportionment are numerous, Clements stated at the meeting. It is important, primarily, that the vote for each person have equal value.

The confusion in regards to apportionment could be clarified with informational workshops. Council member Delbert Frank emphasized, "We'll not make decisions until our people are totally familiar with what to do."

Simnasho people expressed the desire to maintain districts. There was a positive tone expressed by some at the possibility of extending the choice for representative reservation-wide rather than just district-wide.

Some district members strong-

Pi-Ume-Sha Calendar

FRIDAY, JUNE 20

- 7:45 a.m. Mens softball tournament at the Community Center ball fields
- 7:00 p.m. Pi-Ume-Sha Powwow opening session and grand entry
- 9:00 p.m. Coronation of the 1985 Pi-Ume-Sha queen, powwow grounds
- 9 p.m.-2 a.m. Indian Night Out dance, Kah-Nee-Ta Lodge, Adults only, \$2 per person

SATURDAY, JUNE 21

- 7-7:45 a.m. Pi-Ume-Sha Run registration, Community Center, \$8 per person
- 8:00 a.m. Pi-Ume-Sha Run starting time, 2.2 mile and 5.4 mile runs
- 8:00 a.m. Fry Bread Open Golf tournament at Kah-Nee-Ta resort
- 8:30 a.m. Mens softball tournament, Community Center
- 9:00 a.m. Judging for the Pi-Ume-Sha parade held at the W.S. Elementary School
- 10:30 a.m. Traditional dress parade starting at school and ending at Community Center, route on Warm Springs St.
- 1:00 p.m. 10th annual Pi-Ume-Sha All-Indian Rodeo held at the new rodeo grounds on highway 3 (Kah-Nee-Ta road) adults-\$3, children 12 and under-\$1.50, Seniors-free
- 1:00 p.m. Powwow afternoon session and grand entry
- 3:00 p.m. Stick game tournament at the powwow grounds 7:00 p.m.
- 9:00 p.m.-2:00 a.m. Powwow evening session and grand entry
- Western dance at Kah-Nee-Ta Lodge, music by El Coochise and the Country Express

SUNDAY, JUNE 22

- 6 a.m. to 10:30 a.m. Buckaroo Breakfast, Agency Longhouse, \$3 per plate
- 8:00 a.m. Fry Bread Open Final Day
- 9:45 a.m. Mens Softball tournament
- 1:00 p.m. 10th Annual Pi-Ume-Sha Rodeo
- 2:00 p.m. Powwow final session and grand entry