

# Mill Gears Up As Logs Rumble In

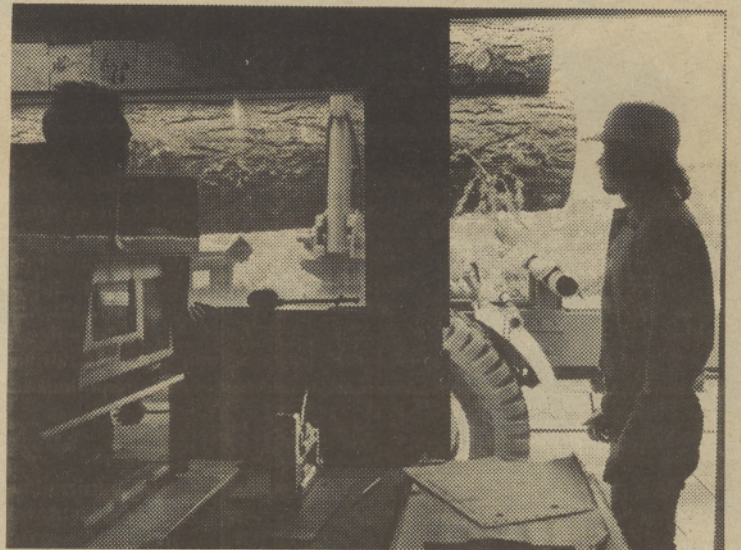


A caravan of log trucks wheeled into the Warm Springs Forest Products decking area May 15 to unload their first cargos of the 1978 logging season. Scalers said they

were coming in twice as fast as they could measure the logs, causing a back-up like the one above. Loggers were eager to get loads out of the woods since the accepting date had been moved back two weeks.



The whole load is removed from the trailers in one bite of a LeTourneau. Logs are scattered out for scaling purposes, then scooped up again to be decked.



Weighmaster Dwayne Samson checked more than 80 loads by 11:30 a.m. on the first day of logging season. Samson makes sure trucks and their loads don't exceed the 80,000 lb. limit and records the species of the loads. Most of the logs coming in that day were Ponderosa Pine.

Photos by Cynthia Stowell



B.I.A. Scaler L.A. Stevens went about his business calmly amidst the dust and bustle of heavy equipment, but said it helps to have eyes in the back of the head. Scalers determine the net and gross volume of the wood by measuring the length and diameter of logs. Board feet are deducted for rot, the extent of which is estimated according to formulas.



After the logs are scaled they are marked with a silver X and shuttled over to the growing log decks. LeTourneau operators raced against time on Monday, the first day for accepting logs into the mill, their hasty maneuvers raising dust and decibels.