

SALVAGE LOGGING

Mickey Brunoe's Outfit



It's a one-man task to drive and load the log truck with a self-loader which is what Mickey Brunoe uses in his salvage logging operation. Brunoe is the only one of the tribal loggers who has a self-loader.

One of the two salvage logging operations on the reservation, Mickey Brunoe's outfit has been in operation for almost nine years, now.

He and his five employees have been working in the Miller Flat area for the past few weeks and are currently hauling about four loads a day to the mill.

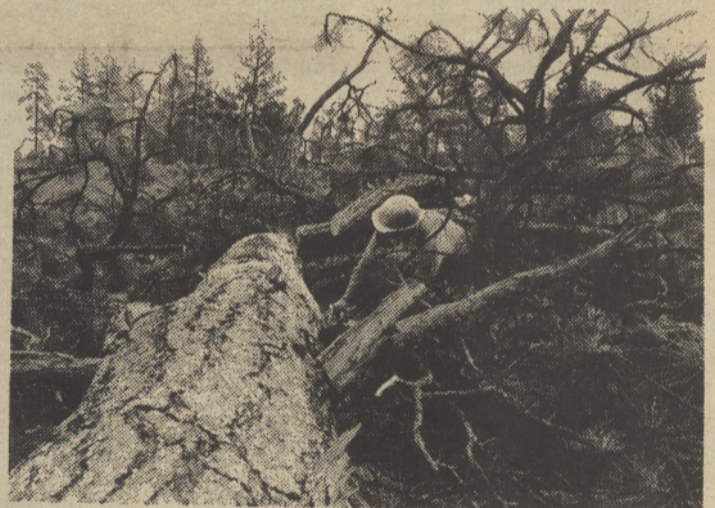
Salvage logging differs from green logging in that salvage operations harvest a more scattered supply of logs and generally take fewer trees in any single area.

This kind of logging operation helps protect the timber stands by weeding out diseased and damaged trees, as well as harvesting downed trees which would otherwise be lost or create a fire hazard later on in the season.

Of note is that Brunoe is the only one of the tribal loggers with a self-loader. It makes sense because his supply of logs is spread out and he doesn't have to move a great amount of machinery each time he moves to a new location.

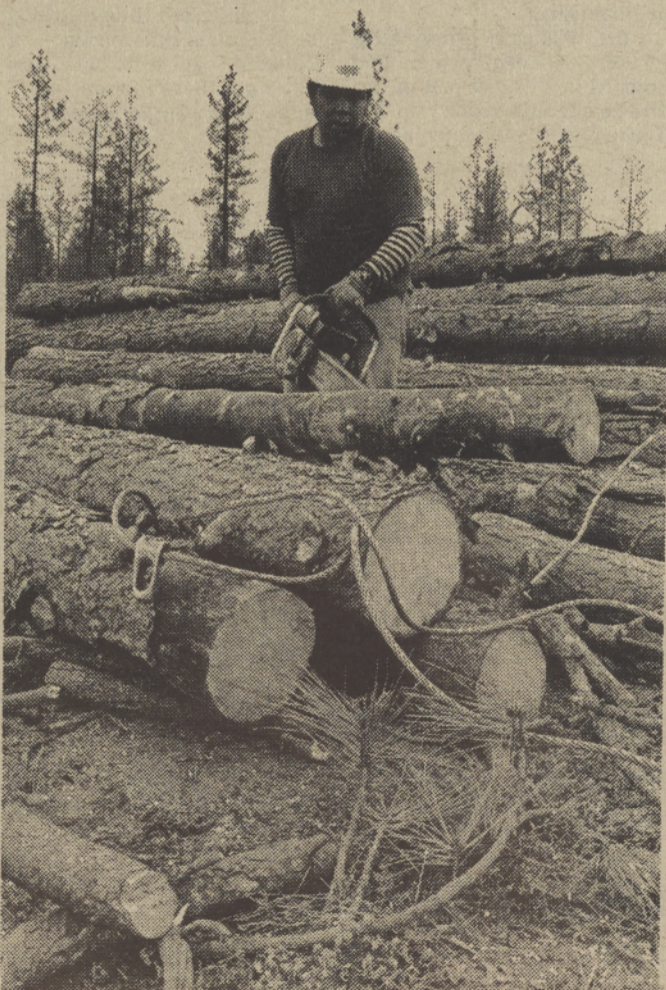


A close-up of the self-loader in operation with Brunoe at the controls.

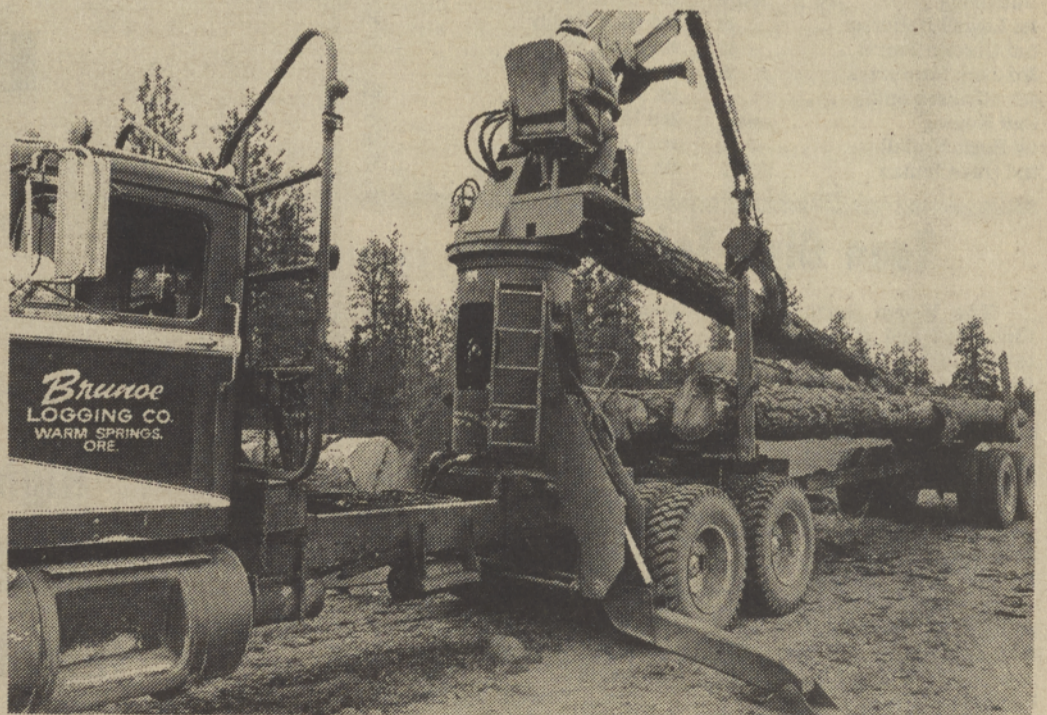


Joe McInturff, a tree faller for Brunoe, limbs and bucks this dying pine. Marked by the forest service, a large number of trees this year are being killed by the pine beetle, and salvage loggers help weed out such diseased trees.

PHOTOS BY
SANDY RANGILA



Lyle Katchia, skidder operator, choke setter, and knot bumper prepared a deck of logs at the landing site for quick loading.



Loading up for his third haul of the day, Brunoe hustled from the cab of the truck to the hydraulically operated self-loader. There is a minimum of equipment to shuffle around so he can load easily in scattered locations, something the salvage logger must contend with.