

Labor Shortage In Lebanon Area Seen With Berry Season

Unemployment During April at Higher Level Than in 1956 But May Work Offers Growing

LEBANON (Special)—A labor shortage in the local area could become a reality within a few weeks, according to information from the employment office. Strawberry harvesting will require around a thousand pickers, starting the last week in May or the following week.

During April, 43 per cent more workers were unemployed than at the same time a year ago.

A fast back-to-work pace was set in March, but slowed in April. Turnover was at a minimum because of the scarcity of new jobs, both in sales and services and in logging and lumbering. Garage and service stations reported fewer employees than a year ago, as did most grocery stores.

Agriculture work increased in April, through planting of grains

Dallas Bosses Paid Tribute By Students

DALLAS (Special)—Retailing class members honored their employers at a Dallas High School distributive education class banquet recently at the Chamber of Commerce rooms.

Supt. Ellis Neal welcomed employers, their wives, students and special guests. O. I. Paulson, Salem, state vocational education director, spoke. Roger Bakke was master of ceremonies.

Henry Dalpez, manager of the local Safeway store, told of changes in retailing through the years.

Ed Caillier, instructor for the distributive education class was presented with a gift on behalf of the club.

Members and officers of the class are Roger Bakke, president; Larry Dierks, vice president; Jay Ann Grooms, treasurer; Charlotte Dunn, Carol Clark, Milton Chiesle, Lorry Daniels, Eugene Giesbrecht, Dennis Ediger, Lavina Friesen, Diane Hads, Jerry Lanzi, Bill McKown, Jeanette Rogers, Bob O'Neal, John McQueen, Donna Rempel and Jerry Lefley, who was state delegate to Oklahoma City for the national convention in April.

YESTERDAY'S CLOSE N.Y. STOCK QUOTATIONS

(By The Associated Press)

Admiral Corporation	11 1/2
Allied Chemical	87 3/4
Allis Chalmers	36
Aluminum Co. America	100 3/4
American Airlines	18 1/4
American Can	42 1/2
American Cyanamide	81
American Motors	6 3/4
American Tel. & Tel.	178 1/2
American Tobacco	73 1/2
Anaconda Copper	63
Armco Steel	53 1/4
Atchafalpa Railroad	23 3/4
Bethlehem Steel	46
Boeing Airplane Co.	49
Borg Warner	42
Burrhus Adding Mach.	46 1/2
California Packing	43 3/4
Canadian Pacific	40 1/2
Caterpillar Tractor	98
Celanese Corporation	15 3/4
Chrysler Corporation	77 1/4
Cities Service	67 1/2
Consolidated Edison	44
Crown Zellerbach	32
Curtis Wright	41 3/4
Douglas Aircraft	81 1/4
du Pont de Nemours	198 1/2
Eastman Kodak	97 1/4
Emerson Radio	6 1/4
Ford Motor	56 3/4
General Electric	64 1/2
General Foods	41
General Motors	43 1/2
Georgia Pac Plywood	34 1/2
Goodyear Tire	66
International Harvester	55 3/4
International Paper	102 1/2
Johns Manville	33 3/4
Kaiser Aluminum	46 3/4
Kennecott Copper	113 1/2
Libby, McNeill	11 1/4
Lockheed Aircraft	46 1/4
Loew's Incorporated	20
Montgomery Ward	28 1/2
New York Central	31 3/4
Northern Pacific	45 1/2
Pacific Gas & Electric	49
Pacific Tel. & Tel.	158 1/2
Penney (J.C.) Co.	80 1/2
Pennsylvania R. R.	21 3/4
Pepsi Cola Co.	23 1/4
Phileo Radio	17 1/4
Puget Sound P. & L.	29
Ranger Corporation	26 1/2
Rayonier Incorp.	34 1/2
Republic Steel	54 1/2
Reynolds Metals	64 1/2
Richfield Oil	63 1/4
Safeway Stores Inc.	69
St. Regis	33 1/2
Scott Paper Co.	60 1/2
Sears Roebuck & Co.	27 1/2
Shell Oil Co.	66 1/4
Sinclair Oil	66 1/4
Southern Mobil Oil	53 1/4
Southern Pacific	44 1/2
Standard Oil Calif.	54 1/2
Standard Oil N.J.	61 1/2
Studebaker Packard	80
Sunshine Mining	7 1/2
Swift & Company	34 1/2
Transamerica Corp.	29 1/2
Twentieth Century Fox	27 1/2
Union Oil Company	58 1/2
Union Pacific	29 1/2
United Airlines	28 1/2
United Aircraft	77 1/2
United Corporation	7 1/2
United States Plywood	34 1/2
United States Steel	65
Western Union Tel.	18 3/4
Westinghouse Electric	38
Westinghouse Electric	48 1/2
Woolworth Company	48 1/2

'Cascade Royalty and Court



King and Queen of the May and their court, above, will have places of honor Wednesday night at Cascade Union High School. Their coronation will climax Achievement Night program for parents.

Pre-School Clinic Set For Dallas

DALLAS (Special)—Children who will enter the first grade next fall and their parents are invited to visit the Morrison and Lyle schools May 17 for a pre-school "roundup."

Children who will be 6 on or before Nov. 15, 1957, are asked to come at 1 p.m. to visit the first grades. Their parents are asked to come at 2 p.m. and meet in the lunch rooms.

Mrs. Jane Domkowski, county health nurse, Ellis H. Neal, city superintendent, principals of the grade schools and first grade teachers will speak to the parents.

Those families who live north of Washington street and in the vicinity of the new Whitworth school are asked to visit the Lyle school and those living south of Washington street should visit the Morrison school.

360 Lyle School Pupils in Spring Event at Dallas

DALLAS (Special)—Some three hundred sixty pupils of Lyle school participated in the school's spring festival Friday night at the Dallas high school gymnasium.

Theme of the production was "This is My Country," with Linda DeWitt depicting Miss Columbia and Billy Warkentin as Uncle Sam. Also portrayed were Paul Bunyan by Jackie Todd and Johnny Appleseed by Joe McMahon.

Parents and teachers made the colorful costumes and background scenery.

Cascade to Crown May Queen, King

CASCADE UNION HIGH (Special)—Miss Karen Vose and Dale Magee will be crowned queen and king of the May at a ceremony Wednesday night at Cascade Union High School.

The coronation will be part of a program which will climax Achievement Night displays and performances for parents. The annual event attracted more than 800 last year, according to Bob Stewart, vice-principal.

Others in the court, selected by vote of seniors, are Joan Kronbuegel, Jeanette Townsend, Alice Graves, Kurt Norlin, Glen Bruce and Jim Uhrhammer.

Open house in each department will begin at 7:30 p.m. and the program at 8:30. Don Smith, public speaking student, will be master of ceremonies.

Mrs. John Selim, dramatics teacher, will be in charge of a

skit to be presented: Miss Nancy Roden will direct the physical education portion of the program; and Rod Weita will direct the band numbers.

Junior and senior girls in formal dresses will wind the traditional May pole.

Classroom displays will show student projects, equipment and accomplishments.

Valley Dates

KEIZER—Roy Hewitt will show slides of his tour of Central America at the regular social meeting of the Keizer Grange at 6:30 p.m. Wednesday at the Grange Hall.

WOODBURN—Woodburn Post and auxiliary, Veterans of Foreign Wars, will meet Wednesday at the library club rooms. At the last meeting Mrs. Les Jordan of Molalla, district president, was a visitor.

Mrs. W. L. Jones and Mrs. Mayme Palmer, will serve refreshments at the May 15 meeting.

WOODBURN—Mrs. W. A. Barlow, Marion county president of the Women's Christian Temperance Union, will speak at the monthly meeting of the Woodburn unit Friday, May 17. The meeting will be at the Woodburn library club rooms, beginning at 2 p.m.

AMITY—A Well Child Clinic is scheduled to be held at the Amity grade school on Thursday morning, May 16, from 9:30 a.m. until noon. Assisting with the Clinic will be Mrs. Ida Williams and Mrs. Ivan Shields.

Stayton Petition Urges Clean-up of City Mill Race

STAYTON (Special)—Asking cleanup of the millrace through Stayton, a petition bearing 74 signatures, was presented to the May meeting of the City Council.

The petition asked the Council to take steps necessary to prevent the placing of garbage and sewage in the Oregon Pulp and Paper company's ditch. The Council turned the petition over to Councilman Jack Powell for investigation. He is to report his findings to the June meeting of the council.

3 Units Install As Meets End In East Salem

EAST SALEM (Special)—Three East Salem and Middle Grove home extension units installed new officers at final meetings the past weekend. Next meetings will be in October.

Meeting in the home of Mrs. Emory Good, Middle Grove unit officers were installed by a county committee member, Mrs. J. Brines.

Mrs. John Cage will act as chairman; Mrs. John Van Lannen, vice-chairman and treasurer; and Mrs. William Scharf, secretary. Mrs. Fred Scharf, chairman for the past year presided at a business meeting and the project was discussed.

Swegle unit met in the home of Mrs. William Hartley. The project demonstration was given by Miss Barbara Feeler, county agent.

Mrs. Dan Stauffer, chairman for the year, presided at the business meeting following the noon luncheon. Mrs. Royal Wenig installed as new officers, Mrs. Harold Holler, chairman; Mrs. Ronald Nopp, vice-chairman; Mrs. Carl Pruitt, secretary-treasurer.

Lansing Neighbors unit met for a covered dish dinner in Grace Lutheran Church for the final yearly meeting. Mrs. Wendell Sebern installed as new officers, Mrs. Roy Glover as chairman; Mrs. Maynard Nelson, vice-chairman; and Mrs. Robert Hamilton, secretary-treasurer.

Special guests were Mrs. Harlan Scott and Mrs. H. John Stricklin. Mrs. William Kuiper presided.

Play School for St. Paul Opens

ST. PAUL HIGH (Special)—The annual play school for pre-school children sponsored each year as part of the work of the home economics classes of St. Paul Union High School started Tuesday, and will be held in the mornings through May 17.

The first week, May 6-10, the school was held on Tuesday and Thursday morning and the second week it will be held on Monday, Wednesday and Friday. The time will be 9 a.m. until 11:45 a.m. each day.

Only children from 3 to 4 years of age will be admitted and parents who would like to have their children attend may telephone Miss Ley at the St. Paul Union High School. The enrollment will be limited to the first 15 children applying.

Activities include story telling, clay modeling, painting, music hour, refreshments, outdoor play and indoor play.

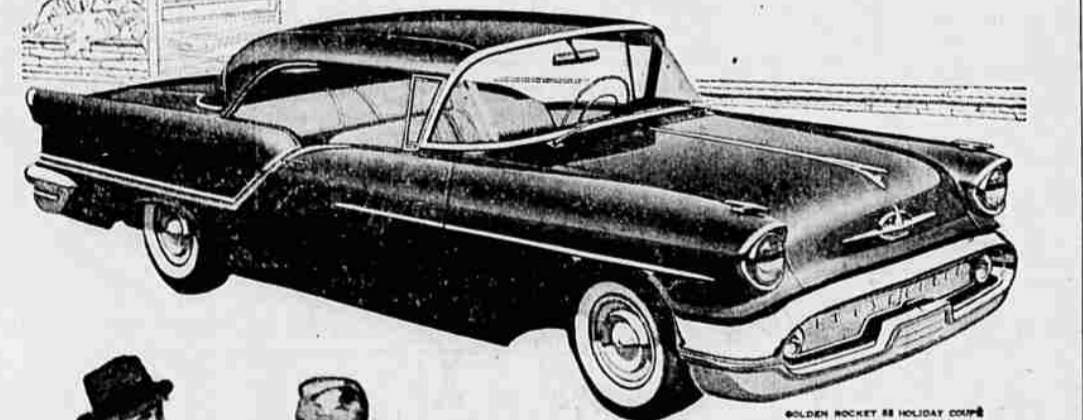
Stolen Car Found

LEBANON (Special)—A car stolen from Marion E. Platt of 1210 Chestnut St. in Albany Saturday night was located Sunday afternoon in Lebanon, parked in Cascade school yard.

OLDSMOBILE



POWERED TO THE WESTERN WAY OF LIFE



"Come on try it... there's nothing like a J-2 Rocket!"

Olds Owners: Let me show you. This J-2 Rocket* is like two engines under the hood.

Friends: Neat trick—how does it work?

Olds Owners: It's a new progressive carburetor system. Gives you more economy... or extra power for safety. Take your choice.

Friends: Economy sounds swell... but with a big car like this...?

Olds Owners: You bet! They engineered the J-2 Rocket Engine for our kind of driving... top efficiency at normal driving speeds because it's fueled by one carburetor.

Friends: How about that extra power?

Olds Owners: Give it 1/2 throttle and two extra carburetors cut in. It's mighty reassuring to know you've got that extra power in the bank.

Friends: I get it. Economy when you want it—power when you need it.

Olds Owners: Correct. But talking about it won't give you the whole story. This one you've got to drive. Climb in—let's go.

PERSONAL NOTE: Your Olds dealer would like you to try J-2, too! It's available now on all models, including the Golden Rocket 88, lowest-priced Rocket Engine car. Be his guest for America's newest driving experience.

*Optional of extra cost.

SEE YOUR AUTHORIZED OLDSMOBILE QUALITY DEALER May is Safety Month—Check Your Car... Check Accidents!

GENERAL ELECTRIC

FILTER-FLO

Automatic Washer With Suds - Saver

FOR ONLY \$259.95

NO LINT FUZZ ON CLOTHES! Lint is trapped in filter. Sand and soap scum are automatically removed. Wash water is cleaned and re-cleaned to give you cleaner clothes!

Matching General Electric Dryer for \$199.95

Fast Drying — Automatic Porcelain Top — Porcelain Drum

Suds Return System—saves hot, sudsy filtered water for a second wash. Here's a truly economical way to wash and it's so automatic you don't have to "baby-sit" with complicated controls. This washer also has a "water saver", which saves gallons of hot water on small loads.

Terms as Low as \$5.25 per wk. for the pair

NO MONEY DOWN EXTRA LARGE TRADE-IN!

A. & W. GREEN STAMPS

MASTER SERVICE STATIONS, INC.

365 N. Commercial

SALEM'S OLDEST SALEM'S LARGEST

FRANCHISED DEALER APPLIANCE DISPLAY

OPEN Monday Night Till 9 P.M.

OPEN Friday Night Till 9 P.M.