

Faculty Full At Amity High For New Year

Girls PE Instructor Completes Staff Of Union School

AMITY (Special)—The hiring of Miss Ruth Henthorn of Willamina as girl's physical education instructor completes the Amity Union High School faculty roster for 1957-58.

Miss Henthorn, who will be a spring graduate of Oregon State College, also will instruct classes at the high school in biology and general science in addition to the girl's physical education. She replaces Miss Clydine Seward, who leaves Amity to enroll in graduate work at the University of Tennessee.

TWO OTHERS HIRED

Two teachers hired previously in a special school board meeting held in April were Mrs. Audrey Jones of McMinnville who will instruct in the English department on a part time basis and George Halter of Myrtle Point, who replaces Lou Hemrich as vocational agriculture instructor. Halter assumes his duties in Amity on July 1.

All other members of the Amity Union High School were re-hired for the 1957-58 school year.

Farm Labor Office Opens

SILVERTON (Special)—Otis Polk of Silverton, under the State Farm Labor sponsorship, is managing the local Farm Labor office.

Offices are on S. Water street near the Silverton downtown section, and opened for business last week, a month earlier than in former years, due to the unusual weather rushing the growth of crops. Hoing of new strawberry acreages, and stringing and training in the hop fields are under way.

The manager said that berry picking could begin as early as May 28 to June 1.

Emergency Equipment for Mt. Angel Abbey



MT. ANGEI—The Rev. Timothy Sander, O.S.B. (center), custodian of the Civil Defense emergency hospital unit at Mt. Angel Abbey, helps unload a crate with the aid of Frater Novice Tom Mitchell (left) and Brother Noel. Unloaded were 460 pieces for the 200-bed hospital unit.

Valley Dates

WOODBURN—Evergreen Assembly No. 12, Order of the Rainbow for Girls, will elect officers at a meeting Wednesday at Masonic Temple. Miss Carole Foster, worthy advisor, will preside.

GERVAIS—The Gervais Grade School Mother's Club will hold their May meeting on Thursday at 2:30 p.m. in the school basement. The event will be a no-host refreshment meeting.

MOLALLA—Dick Welle has arranged a program for the annual Chamber of Commerce employee-dinner Thursday evening in the grade school at 7 p.m.

WILLAMINA—A Well Child clinic will be held at the Methodist church Thursday from 9:30 a.m. until noon. Mrs. Harry Shipley and Mrs. Al Endres will assist the county health doctor, Dr. Ethel Reuter.

Hospital Equipment Arrives at Abbey

Loading was under direction of F. G. Wetherell, assistant medical officer of the state Civil Defense Agency; Major Gen. John Hargreaves and Capt. Wallace Wharton.

For Double Purpose

The hospital unit will be used either during a natural disaster declared by the President or one caused by enemy action, according to Abbot Damian Jentges, O. S. B., said that patients at Portland's Providence Hospital will be moved to Mount Angel Abbey in such an emergency.

Equipment included bedding, oxygen, three anaesthetic machines, pharmacy, sterilizing room items, triage and X-ray machine.

Colton Women Elect New Staff

MOLALLA (Special)—When 14 members of Colton Extension Unit met recently in the home of Mrs. Fred Affolter, broiled meals were demonstrated and served by Mrs. Affolter and Mrs. Edith Aulston. Mrs. Elvera Lundmark decorated a cake for the occasion.

New officers elected were, chairman, Mrs. Fred Affolter; vice-chairman, Mrs. Myrtle Carroll; secretary, Mrs. Glenn Olson; treasurer, Mrs. Edith Kaiser. Members voted to contribute \$5 to Molalla ambulance fund.

The next meeting of the unit was set for Tuesday, May 28, in the home of Mrs. Les Crawford. The lesson for the day will be "Furniture touch-ups."

'Mint Queen' Candidates Listed at Jeff

JEFFERSON (Special)—Candidates for the queen of the Mint Harvest Festival, to be held here July 27 and 28, appeared at the Square Dance Jamboree Saturday night, May 4, at the high school.

Candidates and sponsors are: Freshman class - Carol Hart. She is sponsored by Jefferson Grocery, Mason's Market and Hoevel's Barber Shop.

Sophomore Class-Julaine Pilcher; Sponsors, Karl's Market, Lee's Sweets, Jefferson Hardware.

Junior Class-Sandra Stephenson; Sponsors, Barna's Shell Service, Freres Building Supply, Cobb Manufacturing Company.

Senior Class-Leona Hammond; Sponsors, Terminal Garage, Wickert & Dimick and Terminal Cafe at High School at large-Sandra Dawson; Sponsors, Rick's Garage, Bert's Repair Shop and Santiam Oil Co.

FU Told of Pending Laws

CENTRAL HOWELL (Special)—A complete report of legislation of particular interest to farmers that has gone through both Houses of the Oregon Legislature was given by Rep. Guy Jonas to members of the Marion County Farmers Union in session Saturday evening at the Legion Hall in Mt. Angel.

At the last meeting in January, a resolution was presented pertaining to the use of food crops grown on this coast and urging the Army to contract more of them for use of the Armed Forces. Sen. Wayne Morse took up this matter with the Armed Forces and a copy of their letter was received explaining the method of purchasing food items and naming all the cities in the U. S. which depot the various items of food.

State President Harley Jibby spoke on natural resources, especially Hells Canyon Dam and again on land controls and how they will affect the farmer.

David L. St. John and Wendell Barnett spoke on the cooperative committee.

H. B. Rolph spoke on organizational work.

Mrs. Clarence Johnson announced that Gov. Holmes had designated the week of May 20-26 as Conservation Week.

The annual meeting of the Oregon Farmers Union Cooperative Assn. will be at Mayflower Hall, Salem, on the evening of May 21.

Officers Take Over 2 Units Of Extension

WOODBURN (Special)—Sofa pillow was the topic for study of both the Woodburn and Union extension units Thursday. The Woodburn unit met in the library club rooms with Mrs. Joe Walker Sr. as hostess. Project leaders were Mrs. Frank Chapelle and Mrs. Charles Byers.

New officers were installed by Mrs. Eldon Hart and included Mrs. Delbert Seely, president; Mrs. V. L. Reinecke, vice president; Mrs. Frank Chapelle, secretary and Mrs. Lewis Paulson, treasurer. This was the last meeting of the group until fall.

Mrs. Charles Pantle was hostess at her country home for the Union extension meeting. Fifteen members were present. Guests were Mrs. Floyd Pantle and Mrs. Merle Henn.

New officers installed by Mrs. O. M. Shervem, past president, were Mrs. Lester Henn, president; Mrs. Lyle Skiller, vice president; Mrs. Ray Jackson, secretary-treasurer.

Leading the project on sofa pillows were Mrs. A. Louis Steffan and Mrs. Jack Evans. Next meeting will be in October.

Auxiliary Has New Officers

SILVERTON (Special)—Officers for the coming club year were elected at the regular meeting of the members of the Silverton Lions Auxiliary, in the Oak Street cafe social rooms, with Mrs. Harry Kroner, presiding.

The profits of the Home Show candy sale were given to the Silverton ambulance fund as a memorial to the late Hilda Smith, the club's first president.

A cash donation to the general cancer fund also was made.

Elected were Mrs. Harry Kroner, immediate past president; Mrs. Vester Seydell, president; Mrs. Bruce Billings, vice-president; Mrs. Clifford Almquist, secretary; and Mrs. Ernest Southmayde, treasurer.

Officers elected are to be installed at a special meeting during the summer, jointly with the officers of the Lions club.

Mrs. John Becker was presented the supper award.

Mill City Eighth Grade to Finish

MILL CITY (Special)—Graduation ceremonies for the eighth grade of the Mill City elementary school will be held Tuesday evening, May 28, at the school gymnasium. The ceremonies will be under the general supervision of Mrs. Donald Sheythe, eighth grade

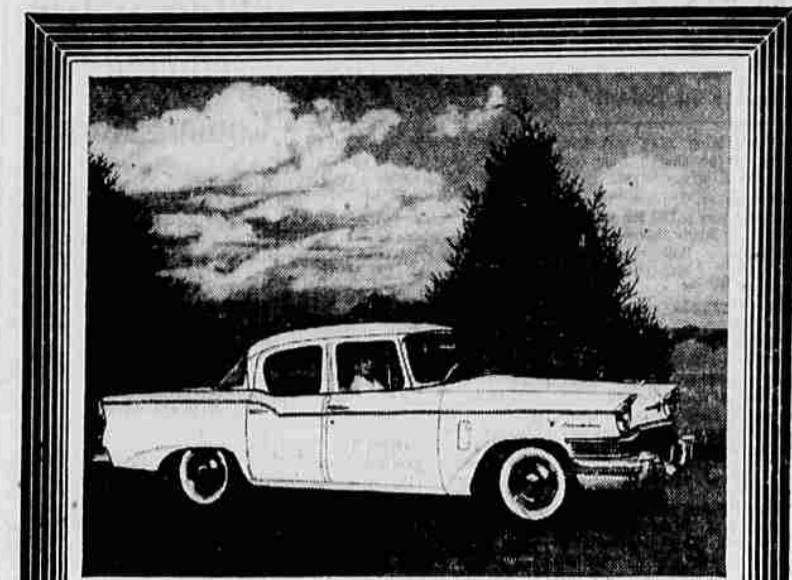
instructor. Lawrence Brent is school superintendent.

The eighth graders will attend a "get-acquainted party" at the Santiam Union High School Friday evening, May 10, with the Freshman class acting as hosts.

President George Washington received an honorary degree in 1790 from Brown University in Rhode Island.

Fairfield Elects

FAIRFIELD (Special)—Mrs. Richard McAnnally was elected chairman of the Fairfield Extension Unit at the last meeting in the Waconda school. Other officers elected were Mrs. Donald Nusom, vice-chairman; Mrs. Richard Schweinfurth, secretary and Mrs. Couper, treasurer. They will be installed May 28.



The Studebaker Commander, one of 18 different models

Before you invest in any car this year, check all the extra value Studebaker offers: exclusive Twin Traction, with drive power in both rear wheels... low silhouette styling, with headroom to spare... the luxury ride of variable-rate springing... six power choices, with traditional Studebaker economy... Craftsmanship that protects your investment, mile after mile, year after year. See your dealer today.

Studebaker-Packard CORPORATION
Where pride of Workmanship comes first!

BONESTEELE SALES & SERVICE INC.,
370 N. Church Street, Salem

GET AHEAD WITH A BILL CLEAN-UP LOAN!

Pay leftover seasonal bills and reduce high monthly payments with a prompt loan here. We like to say "Yes!" when you ask for a loan. Phone for your loan in one visit, or come in.

Loans up to \$1500 on Auto, Furniture or Salary
105 SOUTH HIGH STREET, SALEM
Ground Floor, Oregon Building - Phone: 2-2464
OPEN EVENINGS BY APPOINTMENT—PHONE FOR EVENING HOURS
Loans made to residents of all surrounding towns

Beneficial FINANCE CO.

YESTERDAY'S CLOSE New York Stock Quotations

By The Associated Press

Admiral Corporation	11 1/2	Leew's Incorporated	20
Allied Chemical	89 3/4	Montgomery Ward	37 3/4
Allis Chalmers	34 3/4	New York Central	31
Aluminum Co. America	97 3/4	Northern Pacific	45 1/2
American Airlines	19 1/4	Pacific American Fish	13 1/4
American Can	42	Pacific Gas & Electric	49 3/4
American Cyanamide	80	Pacific Tel. & Tel.	128 1/2
American Motors	6 3/4	Pennsylvania Railroad	81 3/4
American Tel. & Tel.	177 3/4	Pepsi Cola Co.	23 3/4
American Tobacco	74 3/4	Philco Radio	16 1/2
Anaconda Copper	65 3/4	Puget Sound P & L	28 3/4
Arco Steel	54 1/4	Radio Corporation	35 3/4
Atchafalpa Railroad	24 3/4	Rayonier Incorporated	25 3/4
Bethlehem Steel	46 3/4	Republic Steel	53 3/4
Boeing Airplane Company	47 3/4	Republic Metals	59 3/4
Borg Warner	42	Richfield Oil	66
Burroughs Adding Machine	42 3/4	Safeway Stores Inc.	69
California Packing	43 1/2	St. Regis	33 1/4
Canadian Pacific	35 1/4	Scott Paper Company	57 3/4
Caterpillar Tractor	93 1/2	Sears Roebuck & Co.	26 3/4
Celanese Corporation	15 3/4	Shell Oil Co.	83 3/4
Chrysler Corporation	76 3/4	Sinclair Oil	65 3/4
Cities Service	68	Socony-Mobil Oil	58 1/2
Consolidated Edison	44 3/4	Southern Pacific	43 3/4
Crown Zellerbach	50 3/4	Standard Oil California	52 3/4
Curtiss Wright	42 3/4	Standard Oil N. J.	60 1/4
Douglas Aircraft	80 1/4	Studebaker Packard	7 1/4
du Pont de Nemours	194 3/4	Sunshine Mining	7 3/4
Eastman Kodak	94 1/2	Swift & Company	35 3/4
Emerson Radio	6 1/4	Transamerica Corporation	40 3/4
Ford Motor	57 1/4	Twentieth Century Fox	27 1/4
General Electric	64 3/4	Union Oil Company	58
General Foods	43 3/4	Union Pacific	30 3/4
General Motors	43 3/4	United Airlines	29 3/4
Georgia Pacific Plywood	33 3/4	United Aircraft	74 3/4
Goodyear Tire	83	United Corporation	7 1/4
International Harvester	34 3/4	United States Plywood	32
International Paper	102 1/2	United States Steel	64 1/2
Johns Manville	47 3/4	Warner Pictures	25 3/4
Kaiser Aluminum	44 3/4	Western Union Tel.	19 3/4
Kennecott Copper	115 3/4	Westinghouse Air Brake	31
Libby, McNeil	12 1/2	Westinghouse Electric	59 3/4
Lockheed Aircraft	45 3/4		

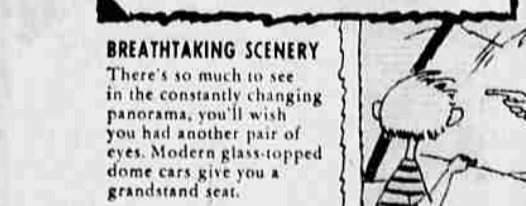
Vacation Time!

There's more fun per mile when your family travels via S.P. & S. Ry.



DELICIOUS MEALS

The dining car meals are always tasty and attractive. Menus are varied and priced to please your pocketbook.



BREATHTAKING SCENERY

There's so much to see in the constantly changing panorama, you'll wish you had another pair of eyes. Modern glass-topped dome cars give you a grandstand seat.



LUXURIOUS COMFORT

S. P. & S. Trains are modern and up to date in every way. Reclining coach seats, deluxe Pullman accommodations, and the friendly club lounge car will make your trip comfortable and enjoyable.

For information call:
R. C. Tetlaff
Oregon Electric Freight Depot

General Offices: American Bank Bldg., Portland, Ore.
SPOKANE, PORTLAND and SEATTLE RAILWAY SYSTEM
Ship and Travel "The Northwest's Own Railway"

for Mother

GE Model M-17

PORTABLE MIXER

- Weights Less Than 3 Pounds
- Hangs Up Like A Saucepan
- Three-Speed Control

\$14.95
Pay Only 50c Per Week

FREE! FIRE KING OVEN WARE
MIXING BOWL WITH EACH MIXER
7" Size With Suction Base for Less Mixing Mess!

NO MONEY DOWN!
GREEN STAMPS!

OPEN Mon. thru Fri. 9 P.M.

MASTER SERVICE STAMPS, INC.

OPEN Fri. thru Sat. 9 P.M.

365 N. Commercial

my new first national checkbook... in color!

NOW... YOUR CHOICE OF THREE COLORS FOR YOUR FIRST NATIONAL CHECKBOOKS!

You may choose blue, green, or red in either of two styles... handy wallet style or neat folding snap cover.

Open your First National checking account today. Get the checkbook of your color-choice. And, as always, enjoy the convenience of First National's personalized checks, with your name and address printed FREE on every check!

Come in anytime, from 10 to 5, Monday through Saturday... for your new, exciting checkbook in the color of your choice!

Wallet or Snap-Cover styles in blue, green or red.

As always... FREE Personalized Checks!

SALEM BRANCH
FIRST NATIONAL BANK
OF PORTLAND
FIRST NATIONAL BANK OF PORTLAND