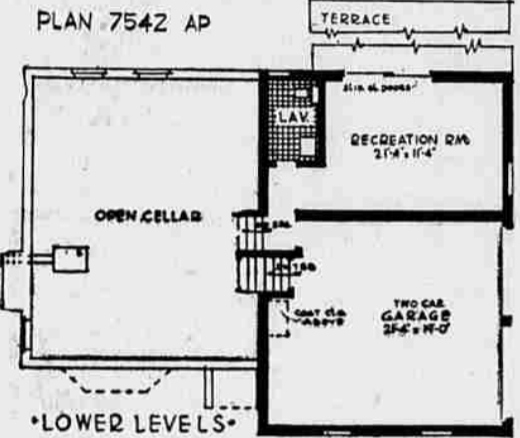
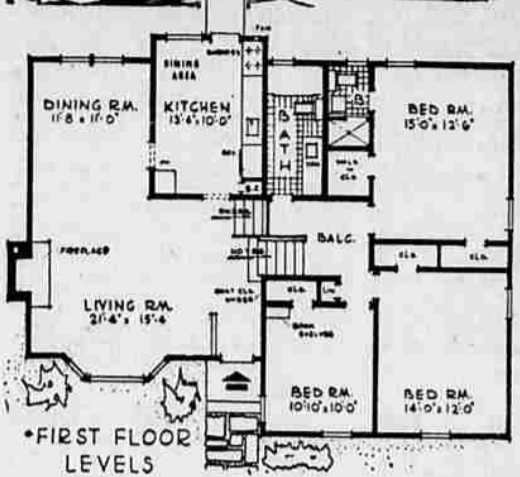


HOMES FOR AMERICANS



HOW A SPLIT-LEVEL puts basement space to work by raising part of it to grade level. This house has a built-in two-car garage, a big recreation room with sliding glass doors to garden terrace, and an extra lavatory on the lower level. The house covers only 1,338 square feet. This is plan 7542AP by Herman H. York, architect, 90-04 161st St., Jamaica 32, N.Y.



BEFORE YOU OPEN YOUR WALLET . . . GET ALL THE FACTS!

- POWER**
More than enough—never marginal!
- GUARANTEE**
Complete satisfaction or your money back!
- PARTS**
Repair parts available for at least 10 years!
- BRAND NAME**
Craftsman—a name you can trust for quality!
- SERVICE**
We service what we sell—nation-wide!

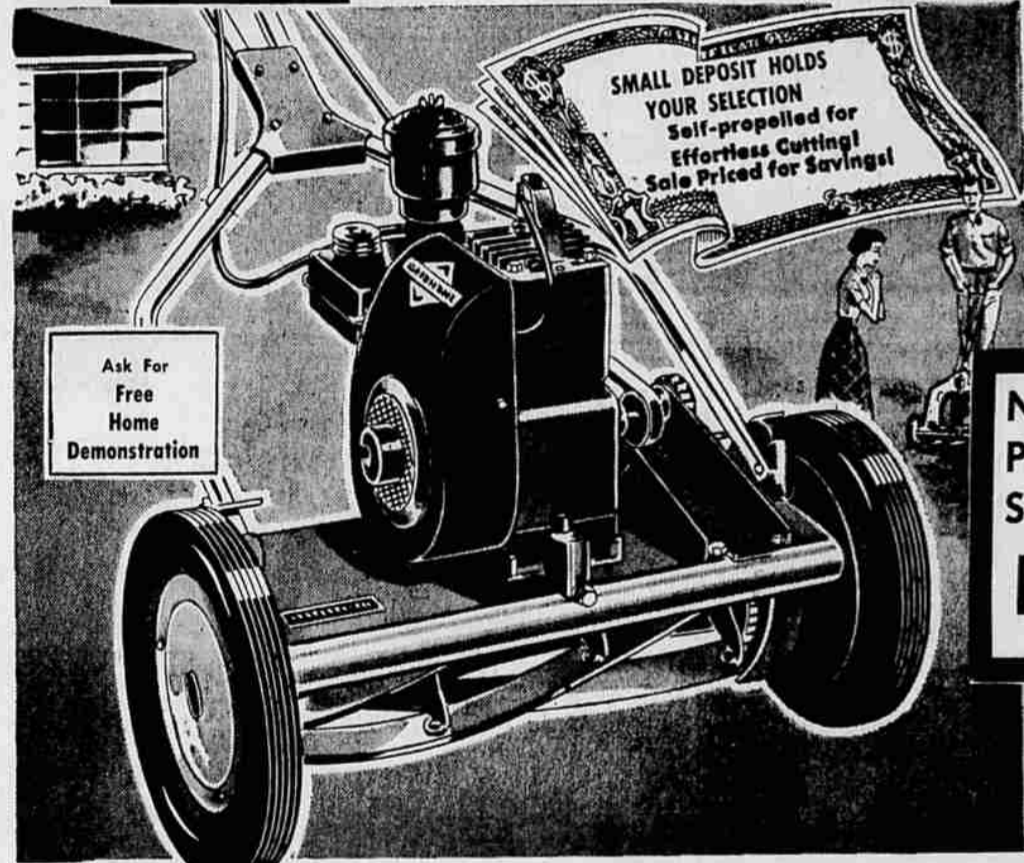
SHOP and COMPARE - BEFORE YOU BUY!

BEWARE

OF ARTIFICIAL LIST PRICES*

You may not be saving a penny! Beware of mower sizes, —if's the size of the blade, not housing, that determines the swath to be cut! *Sears will not establish artificially high list prices in order to show dollar savings! Our Prices shown are Every Day Low Prices. Shop for both QUALITY and PRICE . . . not price alone.

SEARS Is Power Mower Headquarters!



SELF PROPELLED!
18 INCH REEL TYPE

Not Artificial List Price . . . But, Sears Every Day **LOW PRICE!**

69.95
ONLY 7.00 DOWN

- Carbon steel 5-blade reel, knife bed
- Throttle and clutch controls on handle
- Efficient belt-chain drive operation
- Powered by 1 3/4 HP, 4-cycle gas engine

<p>16-inch Electric Rotary Power Mower Dunlap 39.95 Quiet—easy to operate and very economical! Shielded Amstemped blade resists nicking. Steel housing. At Sears, "MEASURE THE BLADE!"</p>	<p>16-in. Rotary 1 1/2-H.P., 2-cycle Gas Engine Dunlap 39.95 Grass, twigs discharged at rear through hinged door as wide as mower. Lighter than most hand mowers! "MEASURE THE BLADE!"</p>	<p>18-in. Rotary Mower With One Knob Control Craftsman 69.95 4-position one knob control—run, idle, stop, shock. More convenient! 2 HP, 2 cycle engine—recoil starter, governor. "MEASURE THE BLADE!"</p>	<p>Trimmer Design 19-inch Rotary Mower Craftsman 94.95 2 HP, 4-cycle engine. Automatic recoil starter. Left wheels recessed into housing for close trim to walls, trees. "MEASURE THE BLADE!"</p>
<p>Husky 22-in. Rotary Mower With 2 1/2 HP Engine 4-cycle 99.95 With labor-saving leaf mulcher. Plus recessed wheels for side trim. Powerful 4 cycle engine. Recoil starter. "MEASURE THE BLADE!"</p>	<p>All-New Craftsman Rotary—21-in. Cut 3 3/4 HP 114.95 New Craftsman 4 cycle engine with one knob control, recoil starter. Amstemped blade, trimmer design. "MEASURE THE BLADE!"</p>	<p>18-in. Power Mower Automatic Recoil Starter Craftsman 119.95 Throttle control on handle! 1 hp Briggs & Stratton engine. Recoil handle to start . . . lower to stop! Save at Sears! "MEASURE THE BLADE!"</p>	<p>Self-Propelled 21-inch Rotary Mower 4-Cycle 154.95 No pushing—It drives itself! Safety foot pedal clutch for disengaging blade. 2 3/4 HP engine—recoil starter. "MEASURE THE BLADE!"</p>

The NEW CRAFTSMAN ENGINE—The Only Power Mower Engine That Has All These Advantages:

- ONE KNOB CONTROL—Gives you fingertip command of engine
- QUART GAS TANK—Gives up to 3 hours running
- FULL PRESSURE OIL SYSTEM—keeps oil system hot like your car's
- QUICK-ACTING RECOIL STARTER—Gives you almost instant starts
- FULL YEAR GUARANTEE—Not just the usual 90 day guarantee
- 2 YEARS FIELD-TESTED—2 years in design and development

4 CYCLE 18" Rotary
MEASURE THE BLADE!
79.95
8.00 Down

- 2 H.P. 4-CYCLE ENGINE
- TUBULAR STEEL HANDLE

Gives smooth cut without scalping lawn! Mower trims both front and sides. Height of cut adjusts from low to 3-in. Recoil starter with automatic governor control. Lightweight steel housing.

SHOP AT SEARS Mondays and Fridays 9:30 A.M. 'til 9:00 P.M. All other shopping days, 9:30 A.M. 'til 5:30 P.M.—Park Free

550 N. CAPITOL **EM 3-9191**

ON THE HOUSE

By DAVID G. BAREUTHER, AP Real Estate Editor

ARCHITECTS SET the pace in design, but must yield to demand in the matter of certain essentials. That's why more and more closet space is being incorporated into new homes throughout the country. Prospective home owners—especially the ladies—have made it plain that plenty of closet space is a "must" in any house they eventually purchase.

Unfortunately, the willingness of architects to meet this need is of no help whatever to the millions of Americans who have older houses which lack a sufficient number of closets. It is amazing how many old houses, built sparsely in every other way, do not have enough closet room. This lack is sometimes met by breaking into walls to build more closets or by construction or buying closets which set up in corners or against walls. And sometimes it isn't met at all, the family moving along on a catch-as-catch-can basis, with a merry scramble for space each time guests are expected.

Improve Use

The one solution to the problem which does not involve breaking into the walls or losing floor space is to make more use of the closets you already have.

The ordinary clothes closet has a wooden or metal rod stretched across its width to hold suits, coats, dresses and other garments which are placed on hangers. It has a shelf, also across the width and just a little higher than the rod. And it has a hook or two on the inside of the door. The clothes rod usually is jammed, the shelves are packed with hats, boxes and what-not . . . and the floor is covered with shoes, rubbers, slippers and a few articles you just didn't know where else to put.

One look at a closet of that sort and you could not help but get the feeling that it is filled to capacity. But the chances are that it has plenty of waste space. For instance, there usually are several feet of space in the closet above the single hat shelf. Put a couple of extra shelves there and you've immediately gained a considerable amount of valuable space. With three shelves, the bottom one can be used for things which you use very often, the middle one for things you need occasionally, the top one for items which are taken down only every few months or perhaps once a year.

Supported by Strips

These shelves can be attached in any one of several ways. The simplest is to attach two strips of wood to opposite sides of the closet and then lay the shelves on the strips. The attachment of the strips to the walls should be strong, but the shelves need be kept in place only with small finishing nails. Or you can screw metal supports into the walls and place the shelves on them.

Small shoe stands, either ready-made or constructed at home, will bring order out of that mixed-up collection of shoes, slippers and rubbers on the closet floor. Incidentally, the chances are that when you sort out the shoes to

put them on stands, you'll find two or three pairs that you haven't used for years but just didn't get around to throwing away.

The inside of the closet door often neglected except for one or two hooks, can be used for hanging ties, hats, trousers, dresses, blouses and many other articles of clothing . . . if the space is properly utilized. Those little metal holders that come in so many different sizes and shapes are ideal for this purpose. You can even put narrow shelves on the inside of the door if you have articles that fit on them. Here's one idea along that line for the lady's closet: attach a mirror to the inside of the door at level, with narrow shelves both above and below the mirror to hold cosmetics. Be sure to put edging around the shelves so that none of the bottles or other items will slide off.

Move Rod Back

These additions to the back of the door can be made in most closets without interfering with the clothes. Once in a while, adding shelves or anything else to the door may cause them to brush against the hanging clothes when the door is shut. In that event, you'll notice that there are a few inches to spare at the rear of the closet. Take down the clothes rod and move it back a couple of inches by repositioning the two supports. After that, the door will shut easily without the shelves touching the clothes.

One final note: because of the added weight on the door, eventual sagging can be prevented by adding a third hinge midway between the top and bottom hinges.

LEGALS

No. 17149
ADMINISTRATOR'S NOTICE IN THE CIRCUIT COURT OF THE STATE OF OREGON FOR MARION COUNTY PROBATE DEPARTMENT IN THE MATTER OF THE ESTATE OF NINA R. JOHNSON, Deceased.
NOTICE IS HEREBY GIVEN THAT WM. D. MILLER, has by Order of the Circuit Court of the State of Oregon for Marion County, been appointed administrator of the Estate of NINA R. JOHNSON, deceased. Case No. 17149.

All persons having claims against said estate are required to present them, duly verified, and vouchers to said administrator at 117 Pacific Building, Salem, Oregon, within six months from the date of this notice.

Dated and first published: March 13, 1957.

WM. D. MILLER
Administrator of the Estate of NINA R. JOHNSON, Deceased
GEO. E. GROSS
117 Pacific Building
Salem, Oregon
Attorney for Administrator
March 13, 20, 27, Apr. 3, 10

NOTICE OF FINAL SETTLEMENT
Notice is hereby given that Dona Helen Andall, administratrix of the estate of Fred K. Andall, deceased, has filed her final account as such administratrix in the Circuit Court of the State of Oregon for Marion County, and that Friday, the 20th day of March, 1957, at the hour of 10 o'clock in the forenoon of said day, at the Courtroom of said Court in the County Courthouse in Salem, Marion County, Oregon, will be appointed by said Court as the time and place for hearing objections to the said final account and the settlement thereof.

Dated and first published this 27th day of February, 1957.
DONA HELEN ANDALL,
Administratrix.
MAYNOR & SHELTERLY
Salem, Oregon
Attorneys
Feb. 27, March 6, 13, 20