

'Best Pastor Ever' Exposed As Ex-Convict

Kansas Preacher Says He's Been in Prison Nearly 20 Years

ELMDALE, Kan. (AP) — Calvin Laskey had revived the Elmdale Christian Church and more than trebled its membership in the nine months he was pastor, but today he's in jail.

The FBI said his record showed he'd been convicted 26 times on felony charges. Sheriff Francis Towle said Laskey himself acknowledged he had been in prison most of the past 20 years.

Elmdale is flabbergasted. "He was the best preacher we ever had," said Miss Carrie Wood, 88, and a lifelong resident of this little town (population 180) in the Flint Hills of southeast Kansas.

"We got value received," said George Dawson, Elmdale banker and member of the church board. "He didn't take a cent from us. That's the surprising thing about it."

"I don't figure I'm out anything," said Tom Wells, farmer and insurance agent who loaned \$125 to the preacher. "I think he balanced the scales by all the good he did. It might be just a case of split personality, some kind of insanity. The man was very pious."

The Elmdale Christian Church almost had faded away when the lanky 43-year-old Laskey appeared on the scene nine months ago and talked himself into the pastorate. He said his name was Dean Barton and he'd been a Presbyterian preacher. The Christian Church is made up of self-governing congregations. Many of the smaller ones do not demand credentials of their ministers.

Elmdale Christian grew to 70 members. When Sheriff Towle stepped in and arrested Laskey he was instructing a class of 15 who planned to confess their faith and join the church on Easter. Laskey pleaded guilty Monday to a charge of illegally marrying a couple Dec. 2. He was sentenced to six months in jail.

The sheriff began to suspect Laskey after hearing one of his stirring talks to service clubs about being a prisoner of war in Korea. Laskey said he'd lost his discharge papers. He said you couldn't get duplicates. Towle knew that wasn't true.

The FBI's record on Laskey dates back to a boy's industrial school at Ottawa, Canada, when he was 14. He was committed to a Montreal insane asylum after conviction of forgery in 1935 but escaped in three months. He has served terms in the Arizona and Minnesota prisons for stealing. He escaped from jail in Boston in 1945. The U. S. and Canadian armies and the U. S. Navy have desertion charges against him.

Mill Workers Will Push for Fringe Boosts

SEATTLE (AP) — Non-wage benefits such as pensions and health and welfare coverage will be sought in negotiations this year, Earl Hartley, executive secretary of the Western Council of Lumber and Sawmill Workers said here Wednesday.

Hartley made the announcement after telling delegates to the council's annual convention that industry-wide bargaining set up by the Washington-Oregon Governors' Committee has collapsed.

In the past, the union generally has passed up such fringe benefits for wage increases. Hartley said employer representatives notified union leaders at their last meeting at Portland they could no longer bargain for the whole industry. At that meeting the union presented its demands for a new contract April 1.

That throws bargaining back to the union districts and locals and the employer associations that conducted negotiations before the industry-wide program was set up, but it does not signal a strike, Hartley added.

Timber Sale Seen Spur to Pulp Industry

WASHINGTON (AP) — The pulp and paper industry may spread throughout Oregon because of the Agriculture Department's recent decision to sell sub-alpine timber. Sen. Neuberger (D-Ore) said Wednesday.

The department agreed to sell a stand of small-sized lodgepole pine trees in the Umpqua National Forest. It is to go into pulp use.

"The verdict sets a precedent, because on wise use of this sub-alpine timber depends the possibility of adding pulp manufacturing in substantial measure to forest payrolls in our state—a state which is hit again this winter by one of America's highest regional rates of unemployment," Neuberger said.

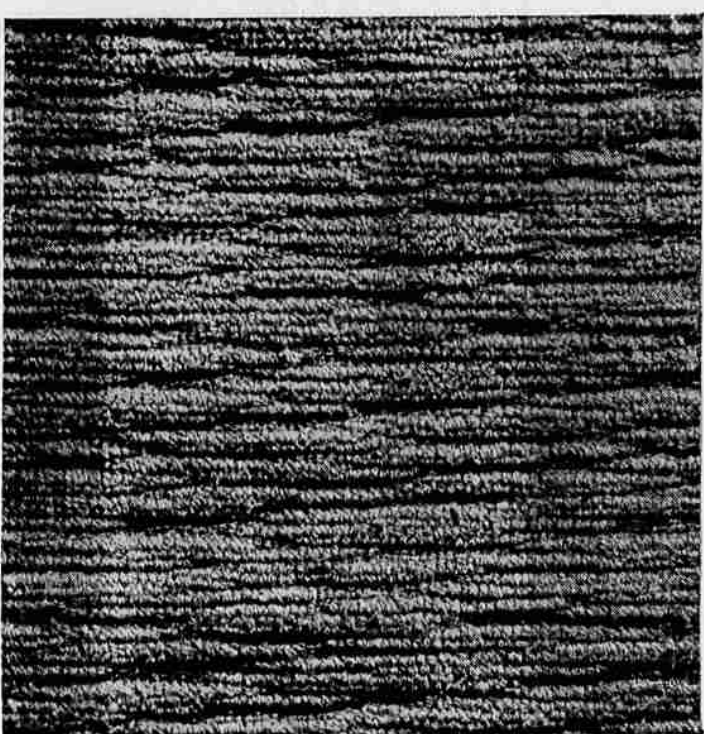
The senator said the decision was delayed nearly two years because some of his opponents tried to use the matter as a political charge.

Danish Air Force units have taken over the U. S. Air Force base in Narsarsuaq in southern Greenland.

starts Friday 9:30 a.m. . . . shop 'til 9p.m.



February Sale of Home Furnishings



Luxury carpeting at real savings!

broadloom sale

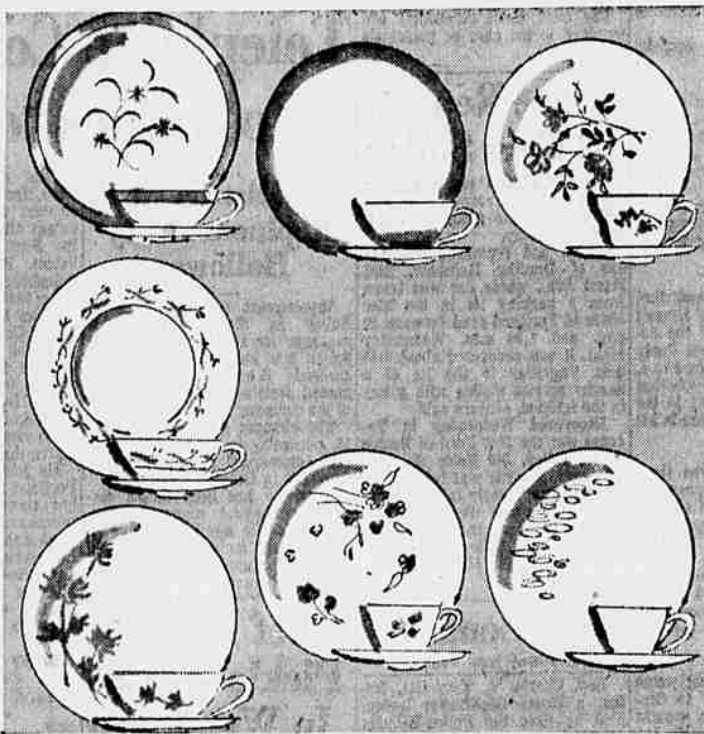
REG. 5.95 LONG-WEARING TWEED . . . super practical, accident-resistant. Brown/beige, brown/gold, forest floor. 12 ft. widths, any length. **4.95** sq. yd.

SOLUTION-DYED BROADLOOM . . . new Random textured weave in smart color combinations. Heavy quality, special introductory price. **5.95** sq. yd.

12.50 WILTON CARPETING . . . 4 patterns; 12 colors. Choose Hi-low ribbed tweed, heavy plush pile carved pattern; multi-color random texture weave; hi-low short ribbed or bark design. **8.95** sq. yd.

27x18 RUG SAMPLES **\$1** 27x54 SAMPLES **\$3**

Lipman's Fine Carpets, lower level



7 patterns in fine china and pottery

dinnerware sale

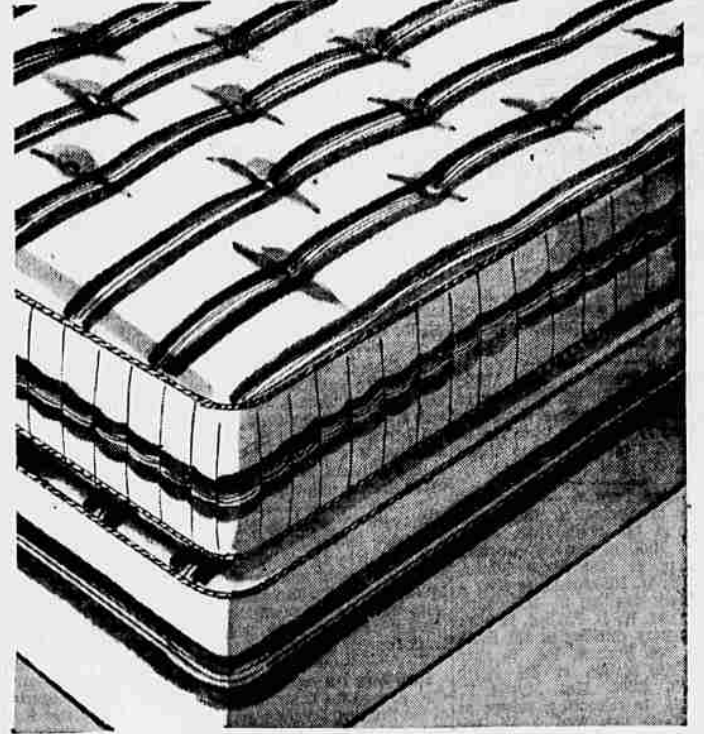
china imports

Reg. 89.98 . . . 98 pieces (included 6 extra cups) ----- 69.98
ANDREA (top left) LEONA (center left) LILI (bottom left)

domestic pottery

Reg. 39.95 WILD ROSE, 57 pieces (top right) ----- 19.95
Reg. 44.95 CHAMPAGNE, 79 pieces (right, 2nd from top) ---- 24.95
Reg. 39.98 CARMEL, 67 pieces (bottom center) ----- 24.95

Lipman's Chinaware, 1st floor



save on box springs too . . . many features!

mattress sale

59.50

REG. 59.50 EA. SLUMBER QUEEN mattress and box spring, 10 yr. guarantee. 252 coils. Perfect body balance unit. 8 oz. ticking. Twin or full size. **29.75** ea.

REG. 149.50 FOAM-KING . . . allergy-free foam rubber mattress. No-sag . . . adjusts to fit body weight. Twin or full bed size. **99.50** set

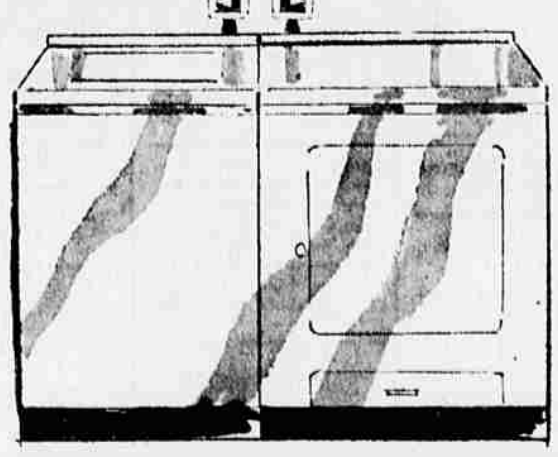
REG. 159.50 Deluxe Foam-King extra firm foam mattress **119.50** set

REG. 69.50 POSTURE QUEEN . . . mattress and box spring. Extra firm posturepedic built in unit insures perfect rest. Twin or full bed sizes. Real buy! **34.75** ea.

Lipman's Mattresses, lower level

famous laundry pair reduced for the first time!

Frigidaire washer and dryer



both for only **299.95**
save over \$100
pay \$15 month

224.95 washer **179.95** dryer

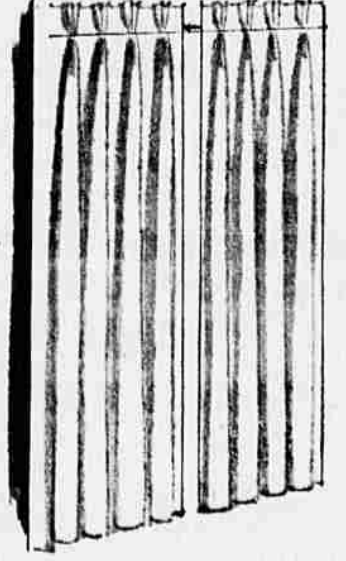
169.95 \$10 mo. **139.95** 9.50 mo.

Super model makes wash day easy. Rub-free agitator washing. Saves up to 1800 gallons of water a year. Uses less current. Saves detergent. Spins clothes drier and shortens drying time.

Lipman's Appliances, third floor

special purchase savings in new, lovely fabrics!

Lipman's customized draperies



usually 1.98 yd. **1.79** yd.

Glamorize your windows now at savings. Your choice of plain and textured fabrics in sun-resistant colors: ice pink, beige, rose beige, natural, spruce green, toast, turquoise, seafoam.

Draperies, lined or unlined, are made in our own work room to your measurements. Choice of chromespun or sateen lining. Below measurements include the necessary overlap and returns for traverse drapes.

Price includes labor and material

	unlined	lined		unlined	lined
single widths	40x36 lengths	10.40	11.76	3 widths	135x72 lengths
1 1/2 "	65x45 "	16.50	20.34	3 1/2 "	156x81 "
2 "	90x54 "	23.80	28.92	4 "	180x90 "
2 1/2 "	110x63 "	31.95	40.60	4 1/2 "	200x90 "
				5 "	230x90 "
					41.04
					51.03
					60.72
					63.31
					75.90
					52.02
					64.68
					79.92
					89.91
					99.90

Lipman's Draperies, 2nd floor

SAVE AS YOU SPEND WITH S. N. GREEN STAMPS