

# Miller's Valentine

The Best Place to Shop . . . After All

Romance is in the cards when you choose your Valentine greetings from our heart-winning assortment. We have cards for everyone . . . cute, sophisticated, sentimental!

Also . . . Special Valentine Gift Wrappings - Gift Shop



Advertised in CHARM

Sizes 12-16

\$55.

- BLUE
- PINK
- AQUA
- GREEN

Miller's Gift Shop Is a Treasureland of Valentine Gifts . . .

Beautiful cut crystal vases, bowls, creamer and sugars and many other fine gifts such as Hummel figurines, bone china cups and saucers, milk glass, etc. And from Italy . . . the gorgeous colored glass. Vases, baskets, in gold, turquoise, pink and white. Shop Miller's Gift Shop now for all the lovely new gift things for Valentines.

**Dainty Valentine Handkerchiefs**  
Lace, embroidered, applique, etc. . . . . **\$1.00**  
Others priced from 50c to \$3.98.  
Gift wrapped for Valentine's Day.

**Silk Scarfs With Hand-Rolled Hems**  
In fashion's smartest accent colors for Spring! Give her a colorful pure silk scarf to wear with her coat or suit . . . these are very **\$1.00** specially priced!

**Flowers . . . Buttonieres**  
**50c to \$1.00**  
Give her a new boutonniere or lapel flower. New ones just received!

**Women's Dress Gloves**  
Eight-button styles . . . 140 count cotton in "rose-petal soft textures" in all the pretty new pastel shades as well as white. . . . . **\$3.95**  
Others priced from \$2.00 to \$5.98.

**Women's Clutch-Style Handbags**  
In grained calf leathers completely washable. Many with double zipper compartments. **\$2.98 to \$5.95**  
Priced . . . . .

**Cuddly Toys for Tots**  
**\$1.00 to \$2.98**  
Made of nylon plush and foam rubber. Some are terry covered. Washable. Dogs, cats, elephants, monkeys, etc. Downstairs.

**Valentine Gifts for Men and Boys**  
Shirts, ties, handkerchiefs, belts, pajamas, wallets, jewelry, socks, sweaters, luggage, Boy Scout gifts, and oceans of others to make him especially happy on Valentine's Day.

A Fine Way to Say She's Your Valentine . . . Give Her **COSTUME JEWELRY**

New! Ceramic earrings in spring colors. Shiny new red heart-shaped jewelry novelties. **\$1.00**  
POPPIT rope pearls . . . **\$1.79**  
Beautiful Riehlieu pearls in 1, 2, 3 strand styles. **\$2.49 to \$25.00**  
Musical Ballerina jewelry boxes . . . . . **\$9.98**  
New! Modern compacts for the personal gifts. **\$2.95 to \$14.95**

**Ship'n Shore' cute 'n curvy broadcloth**

**1.98**

for her Valentine



sizes 3 to 6x, 7 to 14

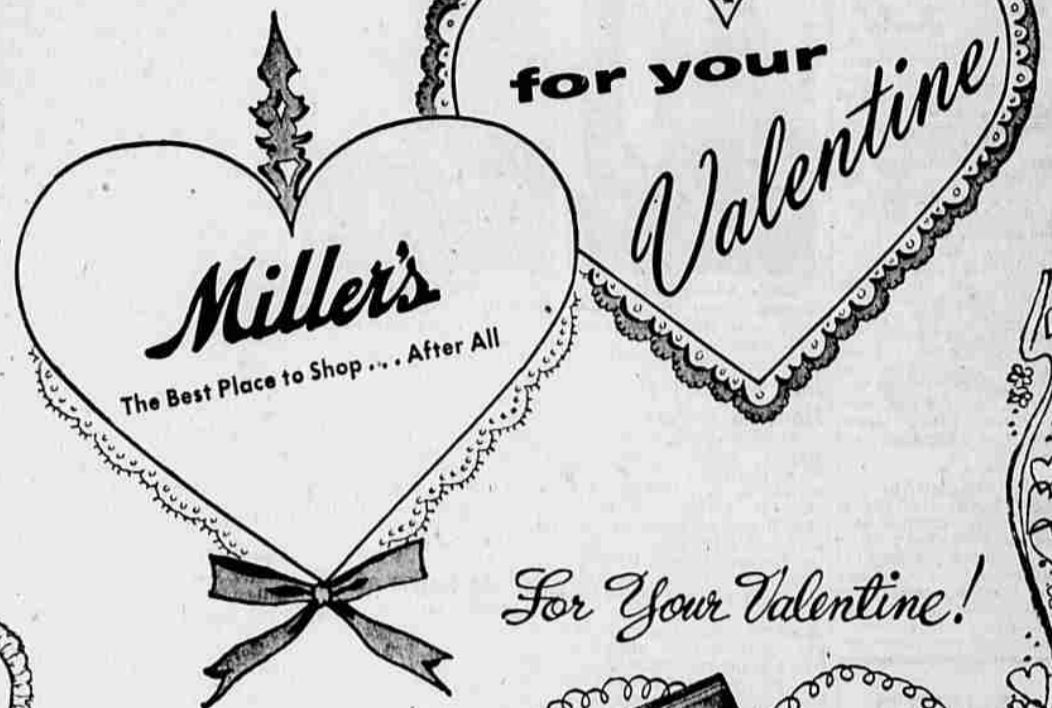
A well-rounded fashion! Soft little sleeves. Sweet curve to the collar. Long tails that stay in, keep waistlines so trim. In finest combed cotton that sings in the suns. Sugar white, mint pastels, lollipop brights. Come see more Ship'n Shore blouses!

Ship'n Shore

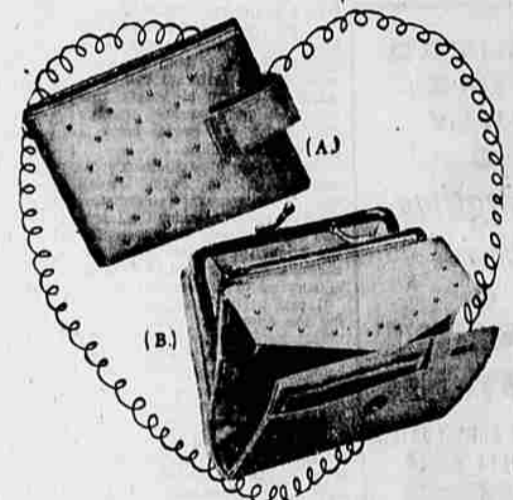
DOWNSTAIRS

## Winning Ways to Her Heart

Open Fridays and Mondays  
9:30 to 9:00  
Other Days  
9:30 to 5:30



For Your Valentine!



the Persian Princess by **PRINCESS GARDNER**

in beautiful polished cowhide a gleam with tiny jewels

A. The REGISTRAR . . . removable photo-card case, expanding change pocket. **\$5.00**  
B. The Continental FRENCH PURSE . . . roomy, leather-lined coin purse, pick-a-bill slot. Valentine Red, White, Pastels and other fashion colors. **\$2.95 plus tax**  
Matching Eye Glass Case . . . \$2.95  
Matching Key Gards from . . . \$2.95 plus tax  
Matching Cigarette Case . . . \$3.95

Get your money's worth for your money . . . get **PRINCESS GARDNER**



Her favorite perfumes are here.

DIRECTOIRE by Charles of the Ritz



Directoire is the fragrance of a splendid era. A lightly-exciting floral blend bottled, packaged and sealed in France. Perfume **\$27.50, \$10.00.** Other Directoire-scented delights from **\$3.50.** (All prices plus tax.)

**Russell Stover CANDIES**  
Sweeter than words on Valentine's Day



valentine hearts

packed with a pound of fresh, delicious chocolates . . . **\$1.85**  
Other "Hearts" **75c to \$5.50**



assorted chocolates

**\$1.35 1 lb. box \$2.60 2 lb. box**

EXCLUSIVE AT MILLER'S

Ask For Free Ticket on Valuable Prize!



Any girl's first choice . . . **BELLE-SHARMEER** stockings in her own personal leg-size! She couldn't be pleased more, if you bought out the store!

fully-fashioned 1.35, 1.65, 1.95  
seamless 1.50, 1.65, 1.95

bruv 8 to 10% for slender or small legs  
modite 8 1/2 to 11, for average legs.  
duchess 9 1/2 to 11 1/2, for tall, larger legs.

Appropriately Gift Wrapped For Valentine Gifts



you're so well suited in a **WHITLEY-ETTE** if you're 5-foot 5" or under



Sizes 10B to 16B

\$55.

- BEIGE
- PINK
- AQUA
- BLUE

what a joy for the 5-foot 5" and under figure! **WHITLEY-ETTE** fits right the first time

So perfectly proportioned to suit the smaller figure, Whitley-ette looks as if it were made for you alone. Let's take this wonderful silk and wool tweed, with its jaunty cut-away box jacket. You spy it. You try it on. And, unmistakably, it's yours! Come see this smart tweed, just one in our Whitley-ette collection!

DRESS FASHIONS . . . 2ND FLOOR