

Keith Powell Home Retains Flavor of Victorian Times

House Built During 1890s

Powell Home Dates From Mauve Decade

By BEN MAXWELL
Capital Journal Writer

Keith Powell home, 1116 Mission St., Salem's towered and filigreed mansion conceived by Dr. Luke A. Port in the mauve decade, stands today as a monument to Victorian decor and spacious living of the 1890s.

Dr. Port, perhaps of English birth, had been in Her Majesty's Indian service. When he came to Salem in the mid-1890s he ac-

quired a drug store on State street and from that apothecary shop conducted his medical practice. He was an educated gentleman of fastidious taste and tradition has it that turbaned, soft-spoken Hindustani servants moved silently about the oak paneled rooms of the Mission St. mansion to serve his every need.

Architect Unknown

Who the architect and builder of Dr. Port's mansion might have been is not known. But construction dates after September 25, 1893 when he acquired the site from J. H. Albert, Salem capitalist. Tradition has it that secret panels cover hidden recesses built into the house at Dr. Port's request.

After a series of misfortunes the doctor left Salem about 1900 and died in San Diego some five years later. A decade later the property was acquired by the late Judge George G. Bingham.

Mrs. Keith Powell accounts for nine rooms in Dr. Port's 60-year-old dwelling, the only known home in Salem to have a port-cochere (a gateway for vehicles entering the courtyard). Five rooms are on the lower floor, four on the upper.

Paneled in Oak

Downstairs dining and library rooms are paneled in select Eastern oak now bearing the patina of age. All have been appropriately furnished with pieces becoming to the period. A front entrance opens into a hallway served by a grand stairway illuminated by mellow light from leaded colored glass side-lights opposite an ornate newel post.

The platform at the top of paneled oak flight is lighted by similar windows. Mrs. Powell has chosen a figured, period wallpaper to become the hallway of this construction interval.

A massive paneled fireplace with carved oak for pilasters and cap features a recessed chimney window of colored leaded glass dedicated to the memory of Omega Port.

Dr. Port's two children were Alpha and Omega. Omega, a studious and pensive boy, had been committed by his father to "the usefulness of humanity." It was determined that he should continue his studies about analytical chemistry in a German university and in accordance with the best English tradition he was embarked on a British vessel for the Cape Horn passage to Europe.

The Glenavon, a heavily laden carrier in the grain fleet, went down with all aboard in a raging gale south of the Azores, Dec. 22, 1887. Dr. Port refused to accept early reports of the disaster but when it became clear beyond doubt that Omega had perished with his shipmates he commemorated the memory of his son by an east window in his new home that admits through stained glass the first light of a new day.

Home Repairs Dos... Don'ts



LIQUID RUBBER painted on hose and bound with tape will stop minor leaks.

AP Newsfeatures

DO...repair pinhole leaks in a rubber hose by allowing to dry thoroughly and applying coat of rubber-base cement, liquid rubber or any similar product which specifically states that it can be used to mend rubber.

DO...allow the mending material to set, apply a second coat and wrap tightly with black electrical tape.

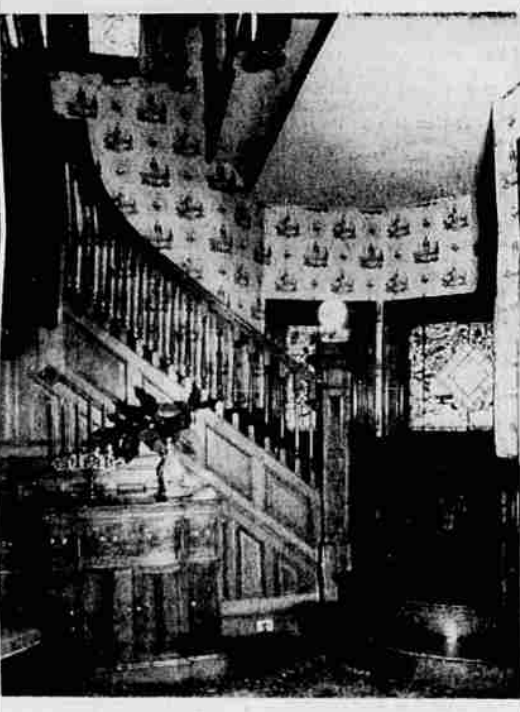
DO...repair larger leaks by cutting out the bad section of the hose with a sharp knife.

DO...connect the cut ends with an inexpensive metal hose splicer.

DO...if the leak is at the end of the hose, near the coupling, check first to see whether a new washer is needed and, if not, buy a new coupling, which is held in place either with prongs or a clamp arrangement.

DON'T...forget that, in wrapping electrical tape around a repaired section, start the tape a couple of inches on the other side.

DON'T...cut out a damaged part of the hose in a careless manner; the cut must be made straight up



Keith Powell home, 1116 Mission St., was constructed to meet the rigid standards of Dr. Luke A. Port, a learned and fastidious physician and apothecary of 65 years ago. It stands today as a monument to Victorian decor and spacious living in earlier Salem. The front entrance to the home, opens into a paneled oak hallway shown in the second picture. All rooms have been furnished by the Powells with appropriate late Victorian furniture. The oak paneled and ornately carved fireplace below displays a recessed commemorative window in stained glass dedicated to the memory of his son, Omega Port, lost at sea in 1887. (Capital Journal Photos)

and down if the splicer is to fit properly.

DON'T...neglect, when using the ordinary splicer with prongs, to pound the prongs with a hammer so they grip the hose tightly.

DON'T...make extra repair work for yourself by kinking the hose, one of the most frequent causes of leaks.

Questions Answered

By MARK M. TAYLOR

Is it the proper time to fertilize trees now? R.H.

It is preferable to fertilize trees in the early spring rather than at this time. To fertilize now would tend to encourage new growth which might be susceptible to frost injury. Fertilizing in early spring when the tree starts into active growth provides the needed sustenance to maintain a good growth and set flowers or fruit.

What would be a good shrub to use along the top of a low retaining wall? The wall is narrow. E.S.

I was fascinated with a garden wall, of similar description, once, where the shrub used was Daphne cneorum. It is a low, creeping, evergreen shrub with fragrant pink flowers. It can be made to grow over the wall and trail down its sides, if desired.

Your Garden Notebook

DO YOU KNOW?

The cultivation of roses, violets and lavender as commercial sources of material used in perfumery is confined, largely, to southern Europe?

Many colors, such as mulberry, plum, peach, geranium, heliotrope, lavender, lilac and violet bear the names of flowers or fruits from which the color was derived?

The Madrona tree is sometimes known as Oregon laurel?

The Heath family includes the true heaths (Erica), Heathers (Calluna), Rhododendron, Arbutus, Azalea, Andromeda, Mountain laurel and Firethorn?

COMING EVENTS—

Oct. 24-26—Holly Society of America, Multnomah Hotel, Portland.

Oct. 24-26—Seattle Chrysanthemum Show, Norway Center, Seattle.

Dec. 6-7—Oregon State Horticultural Society, Corvallis.

The Kuril Islands, between Alaska and Siberia, get their name because "kuril" is the Russian word for smoking. There are active volcanoes on the islands.

GAS FURNACES

Natural Gas Will Be Here This Month

CALL TODAY 3-8555

Eve. 4-8790 or 4-8821

Free Survey & Estimate

Guaranteed Installations

36 Mo's to Pay

GENERAL MOTORS DELCO-HEAT

Salem Heating & Sheet Metal Co.

1085 Broadway

Capital Journal GARDEN PAGE Rhododendron Garden Favorite

It is doubtful whether any plant, in recent years, has attained the general popularity in Northwest home gardens, as has the Rhododendron. A popular misconception is the Azaleas are a separate genus of plants, but this is not true as they are members of the great Rhododendron group.

The Pacific Northwest, with its naturally acid type soil, abundant moisture and moderate climate, makes an ideal home for this most colorful group of plants.

Over 2000 Species

The genus Rhododendron is made up of more species, varieties and hybrids than any other group of ornamental woody plants, over 2000 having been listed.

The plants are both evergreen and deciduous, colorful and, sometimes, fragrant flowers.

It has been found more different kinds of Azaleas and Rhododendrons can be grown successfully in the Pacific Northwest than anywhere else in the country.

Both of these plants, commonly called Azaleas and Rhododendrons, are, properly, members of the genus Rhododendron, there being no clear cut rule for distinguishing Azaleas from Rhododendrons. True Rhododendrons are evergreen, though there are exceptions, and Azaleas are, mostly, deciduous, though there are evergreen kinds. The true distinction between Azaleas and Rhododendrons lies in the number of stamens in each flower, Azaleas having five with Rhododendrons having ten.

Need Acid Soil

All azaleas and rhododendrons should be given acid soil conditions, their roots kept cool and moist and surrounded with humus. Mulches of oak leaves, peatmoss, and pine needles are splendid and may be left on all winter.

The mulching of these plants protect the roots that are close to the surface of the soil and keeps the soil cool and moist during summer weather. In winter it becomes a protection against freezing and, in decomposing, adds an acid fertility to the soil that the plants like.

Requirements, then, for successful growth of these plants are good drainage, sufficient moisture and plenty of humus.

In planting these lovely shrubs as they are received from the nursery, they will come with the earth ball intact wrapped in burlap (called balled and burlaped), dig a hole to receive the ball of earth so the top of the root ball will be just one inch below the surface of the soil. Do not attempt deeper planting than in the nursery as these plants have shallow root systems which should not be buried too deeply.

Can Be Moved Easily

One great advantage of rhododendrons over most flowering shrubs is their ability to be moved at any size, so, you may purchase large sized shrubs ready to give a great

display of bloom next season without fear of loss.

Too much shade may cause a lack of flowering wood to be formed, and, thus, fewer flowers, together with a leggy growth. Thus, light is necessary to produce flowers and a few hours of direct sunlight daily is recommended, despite the common assumption rhododendrons do best in shady locations. Extremes of either sunlight or shade should be avoided.

Single Azaleas belong to the Rhododendron group, their culture is similar. Perhaps the most frequently seen azaleas in this area are the Mollis hybrids in various shades of yellow and orange through red. These are deciduous shrubs that put on a colorful display in May.

The Rhododendron Kaemfiri is another splendid deciduous azalea of the taller growing kind, sometimes reaching a height of ten feet. Flowers vary in color from light pink to red, blooming in May and June.

A native azalea worthy of consideration in home gardens in the Northwest is Rhododendron occidentale, found in Southwestern Oregon. Its bloom are white in color. Flowers vary in color from light pink to red, blooming in May and June.

Of the persistent leaved (evergreen) azaleas, perhaps, the Kurume group is best known and most popular. The flowers of the Kurume azaleas are small in comparison with others, but, what they lack in size they make up for in quantity of bloom, the bloom being so profuse the leaves, often, are completely hidden.

Now is the best planting season, though it is possible to plant from August into May.

Tree Planting Time Arrives

By MARK M. TAYLOR
Capital Journal Special Writer

Late fall is the best time to plant the shade trees desired to provide protection from future summer sun, for the natural moisture at this season helps the plants become firmly established before severe weather sets in. Shade trees should be selected for the home grounds that will add to and not detract from the natural attractiveness of the home. Colorful foliage, flowers and the height and shape of the tree to be planted must be considered in making your selection.

Learn Growth Habits

It is a good rule, in selecting trees for the home grounds, to learn, first, their growth habits, ultimate size in height and breadth, lest they have to be removed when they "overgrow their location."

In our estimation, one of the most beautiful trees in existence is a native of the Pacific Northwest, the Pacific dogwood (Cornus nuttallii). Our dogwood is a large tree when full grown, so, is best used away from the house lest it dwarf it. Plant it at the rear or to one side of the lot as a tall background for the rest of the landscape planting.

The tulip tree is another popular shade tree in this area. Often confused with the magnolia, this handsome tree is one of the best large trees for creating a shady area in the home grounds. It is a splendid lawn or street tree that,

under ideal conditions may reach a height of 150 feet. It should not be planted adjacent to low houses as this gives the illusion of greater height to the tree and lower height to the house. Greenish-yellow, tulip-like flowers appear on mature trees in May or June, and, in the fall the leaves turn a brilliant yellow.

Crimson Maple Gives Shade

The new Crimson King Maple has deep red foliage throughout the winter and creates a dense shade. It is difficult to grow a good lawn beneath it because of the dense shade it casts and the shallow roots that reach out for plant food. The use of a ground cover beneath this tree is the solution. It is a fast growing tree to 45 feet and may be used as an accent tree in the landscape plan.

The American Redbud (Cercis canadensis) is a small tree conspicuous with rosy-pink blooms along its stems and twigs before the leaves appear. It seldom exceeds 20 feet in height and is, thus, ideal for accent planting with the low type of house.

Among the flowering fruit trees, the flowering cherries are the largest growing, some reaching a height of 30 feet. Their spring bloom in profusion is a welcome sight and, later, the tree provides

needed shade beneath its spreading branches.

The following crabapples have beautiful spring flowers, some delightfully fragrant, seldom exceeding 20 feet in height. Crabs should not be planted near red cedars as cedar rust, a most destructive disease.

Some of the flowering crabapples and flowering almond and apricots are too small to be considered as trees, though they are fine shrubs for the home grounds.

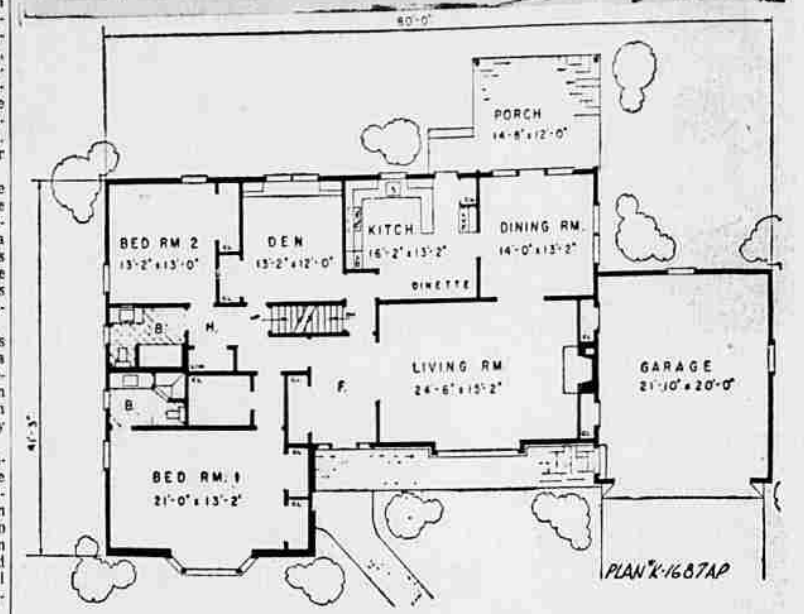
The European Mountain Ash (Sorbus aucuparia) has white flowers in May and orange fruit in early fall. It casts a filtered shade and, not being too large, is useful as a lawn or accent tree on the small home grounds. Do not plant it by a patio as the fruit fall is messy.

The Goldenrain tree (Koeleria paniculata) is a handsome tree to 30 feet with upright pyramids of yellow flowers in the summer. It is not particular as to soil or exposure and, thus, becomes the answer to what tree to use in problem locations.

Lucusts Praised

Two trees that have received a lot of notice recently are the Moraine Lucust and the Sunburst Lucust. Both are rapidly growing

HOMES FOR AMERICANS



Top style expansion is featured in this plan which provides for two additional bedrooms and a third bedroom upstairs with a broad dormer facing the rear to preserve the long low lines in front. Flexibility also is provided by the den, which can be used as a family room or extra bedroom depending on individual preference. The house covers 1,925 square feet without garage and porch. It is 80 feet long including its two-car garage. This is plan K-1657AP by Derrick Kipp, architect, House Plan Headquarters, Room 75, 117 West 48th St., New York 36, N.Y.

Fall Ideal Time to Plant Shade Trees

under ideal conditions may reach a height of 150 feet. It should not be planted adjacent to low houses as this gives the illusion of greater height to the tree and lower height to the house. Greenish-yellow, tulip-like flowers appear on mature trees in May or June, and, in the fall the leaves turn a brilliant yellow.

Crimson Maple Gives Shade

The new Crimson King Maple has deep red foliage throughout the winter and creates a dense shade. It is difficult to grow a good lawn beneath it because of the dense shade it casts and the shallow roots that reach out for plant food. The use of a ground cover beneath this tree is the solution. It is a fast growing tree to 45 feet and may be used as an accent tree in the landscape plan.

The American Redbud (Cercis canadensis) is a small tree conspicuous with rosy-pink blooms along its stems and twigs before the leaves appear. It seldom exceeds 20 feet in height and is, thus, ideal for accent planting with the low type of house.

Among the flowering fruit trees, the flowering cherries are the largest growing, some reaching a height of 30 feet. Their spring bloom in profusion is a welcome sight and, later, the tree provides

needed shade beneath its spreading branches.

The following crabapples have beautiful spring flowers, some delightfully fragrant, seldom exceeding 20 feet in height. Crabs should not be planted near red cedars as cedar rust, a most destructive disease.

Some of the flowering crabapples and flowering almond and apricots are too small to be considered as trees, though they are fine shrubs for the home grounds.

The European Mountain Ash (Sorbus aucuparia) has white flowers in May and orange fruit in early fall. It casts a filtered shade and, not being too large, is useful as a lawn or accent tree on the small home grounds. Do not plant it by a patio as the fruit fall is messy.

The Goldenrain tree (Koeleria paniculata) is a handsome tree to 30 feet with upright pyramids of yellow flowers in the summer. It is not particular as to soil or exposure and, thus, becomes the answer to what tree to use in problem locations.

Lucusts Praised

Two trees that have received a lot of notice recently are the Moraine Lucust and the Sunburst Lucust. Both are rapidly growing

Sandberg

REG. U. S. PAT. OFF.

the new **Universal**

CONSTANT COMFORT GAS HEATER

For Natural Gas

So revolutionary it can only be compared with central heating!

- Guarantees constant comfort floor to ceiling!
- Ends drafty off-and-on heat blasts!
- Heats only freshly filtered air!
- Reduces fuel costs—maintenance bills too!
- Fiberglass insulated cabinet stays cool, safe to touch!
- Handsome modern design adds to the beauty of your home!
- Now on easy terms only.....

\$194.95

Nothing Down First Payment in December

DAY HEATING Co.

FIRST IN GAS HEATING — IN SALEM SINCE 1935

225 DIVISION ST. PH. 3-4822

D. E. Cooper & Son

540 Mood St.

Phone 3-3603