

Broadway Star and Musician Wed



BEVERLY HILLS, Calif. — Greichen Wyler, to Shepard Coleman, a cellist, after their marriage ceremony. The Broadway production "Silk Stockings" feeds a piece of wedding cake. (AP Wirephoto)

Tragedy's Mute Evidence



Coast Guardsmen aboard search craft standing on the flaming crash of Venezuelan airliner off New Jersey coast hold up dress of a young girl who will never wear it again. She was one of 74 persons—24 of them children—killed yesterday in the flaming crash of Venezuelan airliner off New Jersey coast. On deck lie other pieces of clothing and debris found floating at the crash scene. (AP Wirephoto)

Mama's Pride and Joy



Astra, giraffe in the Rome Zoo, stoops her long neck to nuzzle Maja a few days following the birth of her long-legged daughter. Giraffes rarely breed in captivity and when they do, offspring are often sickly. But Maja has begun life fit and well. (AP Wirephoto)

Ray Alber, 69, Dies at Work Wednesday

N. Ray Alber, 69, who only a short time ago came to Salem as an employe of the Salem Credit Bureau, died at his desk at the Credit Bureau Wednesday. Alber was found, still seated in his chair, by Stanley Allen, chief legal clerk for the bureau. City police were called at 10:27 a. m. and a policeman and first aid were dispatched to the bureau and found Alber dead on their arrival. The coroner's office, called a few minutes after city police, said Alber apparently had a medical history of heart trouble. A Portland attorney for many years, Alber before coming to Salem about three weeks ago had retired and was residing at Seaside. He also maintained a home at Oswego. He was born in Minnesota October 1, 1886. Among the survivors are three daughters, Mrs. Rosemary Gun, Portland, Mrs. Nancy Windolph, Beaverton, and Mrs. Alice Clow, Bellingham, Wash. Announcement of funeral arrangements will be made later by the Howell-Edwards chapel.

Card Tourney Slated Here

Two players from up the Willamette valley won double master points on successive days at duplicate tournaments held at the Elks club this week. They are Mrs. Percy Miner of Corvallis, who paired with Mrs. Jose Moritz in the first and Mrs. Elsie Day in the second event, and John Pugh of Sheild, who teamed with his wife in the first and Mrs. Harry Wiedmer in the second. In the juniors' June playoff, also held at the Elks club, Mr. and Mrs. Carl Charnholm were winners, while places also went to Mrs. M. A. Beyer of Mt. Angel and Mrs. Myrtle Watson, and Mrs. Richard Chambers and Val Soper. Even more out-of-town bridge experts are expected in Salem during the coming week-end for the Willamette valley sectional championships. In six sessions at the Elks club, winners of the open pairs and masters pairs titles and of the team-of-four championship will be decided along with dozens of winners of trophies and other honors for single tournaments. More than 200 players are expected to compete beginning at 1:30 Friday afternoon at the Elks club rooms.

Smith Enroute To Conference

Governor and Mrs. Elmo Smith left Portland Thursday by commercial plane for Atlantic City where the Governor will attend the Governor's Conference. Before returning to Oregon Gov. and Mrs. Smith will briefly visit both New York City and Washington, D. C. They will be back in Salem at the end of next week. During Smith's absence from the state, Speaker of the House Edward Geary of Klamath Falls will serve as governor. Geary plans to come to Salem Monday to sign some papers and care for other business in the executive office.

Feud Smoothed At Silverton

SILVERTON—Differences between the police department and Silverton's municipal judge, Jeff Hoyt, were smoothed over Tuesday night at a meeting between the principals and the city council. It was agreed that an assistant municipal judge will be provided, that the municipal court shall convene at regular stated times, and that a bulletin board bearing the court calendar and trial dates will be placed in the office of Police Chief R. R. Main. The changes were ordered by the council in answer to complaints that a case had to be dismissed once because of the absence of the judge and that the police were not notified that the judge would be absent.

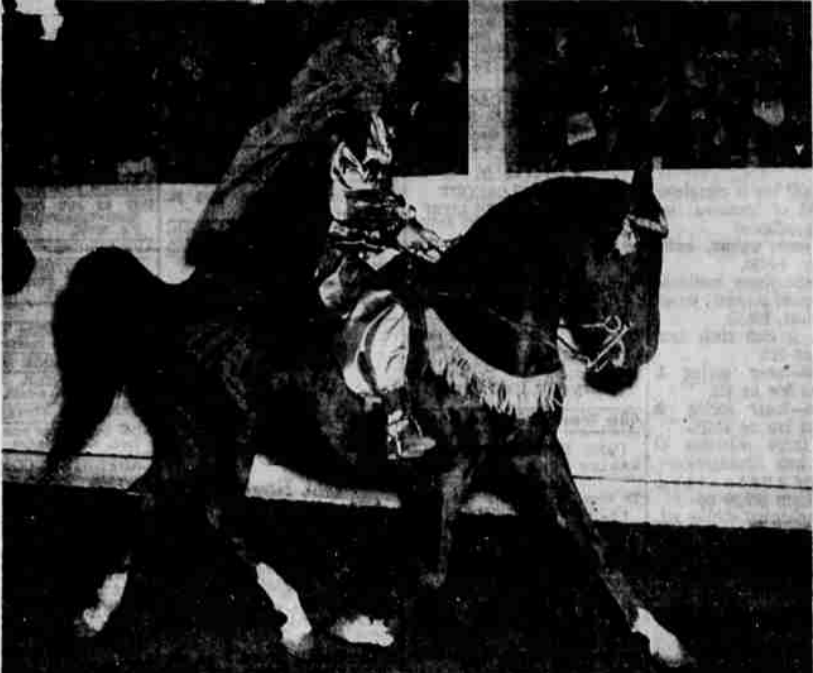
Mathewson Home Goods Here; CM Due on July 1

The household property of Kent Mathewson, who will become Salem city manager on July 1, has arrived in Salem and will remain in storage until arrival of the Mathewson family. The Mathewsons are on their way across country by automobile. They are making the journey leisurely and are visiting relatives en route. A home has not yet been located and it is possible they will live in a hotel for a short time after arrival.

46 Start Naval Reserve Cruise

Salem's Naval Air Reserve Facility started its last cruise of this fiscal year this week with a total of 46 men on the cruise. Training at the facility at this time was the men from AAU 82 which is commanded by Lcdr. William S. Wright, Springfield. In the group are 24 pilot officers, two ground officers and 20 enlisted men. AAU 82, which Saturday completed its two-week cruise, flew

Due to Appear at All-Arabian Horse Show



Native costumes will be part of the all-Arabian horse show June 23-24 at the state fairgrounds. This purebred stallion, winner of many blue ribbons, will be seen in action in the native costume class. The horse is owned by S. Watts Smyth, Big Horn, Wyo. and ridden by Mrs. Jane Fish, formerly of Portland.

'Pet Day' Slated Friday at Salem Playground Areas

The first special day of the summer recreation program, Pet Day, will be held Friday at 1:30 p. m. on all the playgrounds. The entries will be judged in the following divisions: largest dog, smallest dog, largest cat, smallest cat, best dressed pet, most unusual pet, best trained pet, and the largest family. Recreation officials caution that all dogs must be on leashes.

Death Claims John Campbell

John M. Campbell, retired mortician, died early Thursday morning at his home at 1935 Eola Dr., from a heart attack. Campbell had a heart ailment and a few months ago had a heart attack. Born July 17, 1906, at Maryville, Saskatchewan, Canada, Campbell came to Salem in November, 1955, from Calgary, Alberta, Canada. He was a member of the Shriner's. Surviving are his wife, the former Frances E. Cornell to whom he was married at Calgary August 1, 1932; a daughter, Miss Delores Campbell, Salem; a son, John Maurice Campbell, Alberta; a sister, Mrs. Ina Anderson, Calgary, Alberta, Canada; and a brother, Pete Campbell, also of Calgary.

Former Salem Family Visits

Mr. and Mrs. A. G. Matherly, formerly of Salem, but now residents of Venezuela where Matherly is a mine superintendent for U. S. Steel Co. subsidiary, have arrived here for a month's vacation. The couple are visiting at the home of their daughter, Mrs. Theodore Flook, 1860 South Capitol St. Matherly scanned the Associated Press list of dead in the Venezuela plane crash near New York Wednesday. However, he did not find the names of any associates or acquaintances, even though many men working with him use this plane in traveling to and from the United States. Matherly is one of approximately 1000 employes of Orinoco Mining Co. The iron ore main objective is on the Caroni river in the interior of Venezuela.

Auto Strikes Train, Driver Not Injured

In a train-car collision Wednesday evening, a 1948 Chevrolet sedan was demolished but the driver, Leonard Nullen Hays, 5690 Quinby road, escaped with only minor cuts and bruises. State police, investigating the accident, said that the Hays car ran into an Oregon electric train at a rail crossing just off the Quinby road about 6 p. m. near the Bonneville substation. Hays came through with minor cuts on the face and a hip bruise when his vehicle was dragged about 30 feet by the southbound train. He told officers he was going west at the time of the accident and did not see the train. The car struck the second of two engines pulling a freight train, police said. Hays was taken to a Salem hospital for treatment but was released and allowed to go home shortly thereafter. The demolished car landed on its side in a ditch. Hays told police he threw himself down on the front seat to avert injury.

Valley Berry Prices Slip

PORTLAND — Effect of recent rains on Willamette valley strawberries was reflected on the Portland produce market Thursday when wholesalers quoted top quality California flats from 50 to 65 cents above valley-produced berries. Others who expect to take the examination in December are: Sylvia Beak, 675 Wildwood Dr.; Gabrielle Monique Schultz, Woodburn; Molly Bush, 3260 Hayesville Rd.; Amelia Mildred Brady, Rt. 4, Box 318; Wladyslaw J. Symonki, St. Benedict; Beverly Cummings Lewis, 4485 State St.; Mieczyslaw Grzeslewski, Mt. Angel; Herbert Prosper Bara and Emma Marie Bara, 925 Leslie St.; Aloisia Christine Trembl, 2145 N. Liberty St. and Allan Jacob Madsen, 3360 Portland Rd.

City Firemen Called Twice

A burning pot of meat and a burning furnace motor brought calls for firemen Wednesday. Firemen were called at 10:35 p. m. to 1204 Leslie St. where a pot of meat left on a gas burner had caught fire. There was little damage other than to the meat, firemen said, but they spent about an hour at the home with ventilating fans and a deodorizer clearing out the smoke and smell. A burning furnace motor sent firemen to the R. B. Maxwell home, 720 Stewart St., about 11 a. m. Damage was limited to the motor, they said.

Stalnaker Reappointed To Retirement Board

W. P. Stalnaker, of Portland, was reappointed a member of the public employes' retirement board by Governor Elmo Smith for a four-year term beginning July 1, 1956. Stalnaker, representing citizens on the board, was first appointed January 20, 1955. To fill the unexpired term of W. C. Schuppel of Portland.

Death Comes To Jay Brown



DALLAS — Jeremiah (Jay) Brown, 65, a resident of the Dallas district for most of his life, died Monday at the home of a son, Kenneth Brown, at Biceiland, Calif. Funeral services were at 2 p. m. Thursday at the Bolman Funeral Home in Dallas. Burial was in the Salt Creek cemetery with the Rev. Leland Morse officiating. Mr. Brown was born at Ulysses, Kan., May 9, 1891, the son of Tyrus and Rose Case Brown. He came to Polk county with his parents when a boy and they settled in the Salt Creek district. In his younger days Mr. Brown taught school for several years. He had been a semi-invalid for 12 years at the time of his death. Mr. Brown was married to June Evans at Corvallis, Nov. 7, 1921, who survives. Other survivors are his son, Kenneth; a daughter, Erma Brown, California; two sisters, Mrs. Henry Fast, Sheridan, and Mrs. James Morrow, Medford; three brothers, Jack, Dallas; Roscoe, San Jose, Calif.; and Phil Brown, San Diego; and seven grandchildren.

MILITARY MEN AND VETERANS TAKE AMPHIB TRAINING

Pvt. Dale R. Andreassen, son of Mr. and Mrs. Raymond E. Andreassen, Route 1, Lyons, and Pvt. Lloyd J. Bowers, son of Mr. and Mrs. Norman F. Bowers, Idanha, were among those men taking part in a recent amphibious training exercise on low Jima with the eighth regiment of the First Cavalry Division. Andreassen, who has been in the Army since May, 1955, and before being sent to the Far East was at Fort Myer, Va., is regularly assigned to the headquarters company of the eighth regiment at Camp Whittington, Japan. Bowers, who also is stationed at Camp Whittington, is regularly assigned as a mortar gunner with heavy mortar company. He entered the Army in August, 1953, and arrived in the Far East in August, 1954. ARRIVES IN PHILIPPINES A 3/c Curtis P. Mahoney, son of Mr. and Mrs. J. R. Mahoney, 3135 Lynn Ave., Salem, has arrived in the Philippines for duty with the air force as a passenger service specialist for the 1506 Air Terminal squadron, Military Air Transport Service at Clark Air Base, Manila, after graduating from the North Salem high school, entered the air force in October, 1955. NEW COMMANDER Eugene G. Cushing, superior court judge for Clark county Wash., has been appointed commanding officer of Oregon's 104th infantry regiment, 104th division, an Army reserve unit. Salem's company K is one of the companies of the regiment. Cushing replaces Lt. Col. Kenneth Bell, who is the new inspector general for the 104th division.

BLM Delays Park Grant

The Bureau of Land Management has notified the Marion county court that there will be delay in granting the county's request for approximately nine acres of land in the Santiam river area for park purposes. A letter from Robert D. Hosteler, assistant district forester, Thursday said: "Inasmuch as an appeal to our rejection of a previous land-use application covering the same area is now pending at a point unknown to us on the docket before the director of the Bureau of Land Management, we are unable to state with certainty when action can be taken on your application. However, you will be notified promptly as soon as any action is taken." The nine acres are considered ideal for park purposes, located as they are on the bank of the North Santiam river where there is a bend in the stream affording a stretch of slack water for swimming purposes.

Chicago Livestock

CHICAGO — Farmers cut shipments of hogs to market Thursday but it failed to produce any price rally. In general prices held steady on both butchers and sows although the top was down 35 cents. The bulk of 200 to 250 pound butchers moved at \$15.75 to \$16.00 with several lots at \$16.25 and 68 head at \$16.50, top. Butchers scaling 270 to 290 pounds moved at \$15.25 to \$15.75. Choice steers sold from \$19.25 to \$21.00. Good to low choice heifers brought \$17.00 to \$19.00. Buyers paid \$10.75 to \$13.00 for utility and commercial cows. Good to prime native spring lambs went at \$20.00 to \$23.00. A Salable receipts were 6,000 hogs, 2,000 cattle, 300 calves and 500 sheep.

Salem Markets

Compiled from reports of Salem dealers for the guidance of Capital Journal Readers. (Revised daily) Eggs: Rabbit Pellets—\$3.50 (80-lb bag); \$4.10-\$4.50 on 100-lb bag. Egg Mass—\$4.45-\$4.55. Dairy feed—\$2.05-\$2.30 (80-lb bag); \$2.30-\$2.50 (100-lb bag). Poultry: Buying prices—Colored fryers, 22c; old roasters, 11c; colored fowl, 18c; leghorn fowl, 16c. Eggs: Buying prices—AA, 41c; A, 36-37c; medium A, 25-26c; small A, 22-23c. Wholesale prices generally 3-5 cents higher than buying. Butterfat: Buying prices—Premium, 62-63c; first grade, 59-60c; grade 2, 55c. Butter: AA grade, 73c; quarters, 74c. Wholesale—Solid AA, 68c; quarters, 69c.

Labor Council Asks Utilities Job Election

PORTLAND — The Oregon State Labor Council, AFL-CIO, proposed Wednesday that the state utilities commissioner be elected hereafter. The office now is an appointive one. The council, organized two days ago by state merger of the AFL and CIO unions, also passed a resolution advocating that 18-year olds be allowed to vote in Oregon. Still another resolution proposed a uniform state building code. Several speakers told delegates that labor must keep public relations in mind and that labor leaders must face up to their public responsibilities. "Organized labor is more dependent on public opinion than ever before. We need to do a better job than we have in the past. We must get the facts to the public," said John Despot, executive secretary of the California State Industrial Union Council. "You are on the spot, and nobody can step out of line," said the Rev. John J. O'Hara, Pendleton. "Every leader must be most conscious of what he does. What difficulty there has been in the past has been that a few labor leaders wanted to make a fast buck and a quick turnover." Winners of 500 labor scholarships received their checks. They were Karen King, Beaverton; Mary Jane Brown, Portland, and George C. Casper, Junction City.

Portland Livestock

PORTLAND —(USDA)—Cattle salable 125; holdover 115, largely fed steers arriving too late for Wednesday's market; market rather slow, few loads fed steers about steady considering fill; cows few utility bulls, few sales steady to weak; around 2 1/2 loads high choice fed steers 1.152 lbs. 22.25; part load 1,273 lb. 21.75; few standard and good steers 17.00-19.00; utility steers 12.00-15.00; heifers scarce, scattered sales standard and utility 14.00-16.00; cutter and utility cows 9.00-12.50; few utility bulls, 16.50; individual 17.00; few cutter bulls 13.50-14.00. Sheep salable 300; scattered early sales good and choice vealers steady at 17.00-21.00; little done on lower grades. Hogs salable 300; few early sales U. S. Nos. 1 and 2, 180-235 lbs. butchers 19.00-19.50; little done on No. 3 butchers; few 360-450 lb sows 12.00-15.50. Cows: few sales steady to weak; around 2 1/2 loads high choice fed steers 1.152 lbs. 22.25; part load 1,273 lb. 21.75; few standard and good steers 17.00-19.00; utility steers 12.00-15.00; heifers scarce, scattered sales standard and utility 14.00-16.00; cutter and utility cows 9.00-12.50; few utility bulls, 16.50; individual 17.00; few cutter bulls 13.50-14.00. Calves salable 50; scattered early sales good and choice vealers steady at 17.00-21.00; little done on lower grades. Hogs salable 300; few early sales U. S. Nos. 1 and 2, 180-235 lbs. butchers 19.00-19.50; little done on No. 3 butchers; few 360-450 lb sows 12.00-15.50. Cows: few sales steady to weak; around 2 1/2 loads high choice fed steers 1.152 lbs. 22.25; part load 1,273 lb. 21.75; few standard and good steers 17.00-19.00; utility steers 12.00-15.00; heifers scarce, scattered sales standard and utility 14.00-16.00; cutter and utility cows 9.00-12.50; few utility bulls, 16.50; individual 17.00; few cutter bulls 13.50-14.00. Calves salable 50; scattered early sales good and choice vealers steady at 17.00-21.00; little done on lower grades. Hogs salable 300; few early sales U. S. Nos. 1 and 2, 180-235 lbs. butchers 19.00-19.50; little done on No. 3 butchers; few 360-450 lb sows 12.00-15.50. Cows: few sales steady to weak; around 2 1/2 loads high choice fed steers 1.152 lbs. 22.25; part load 1,273 lb. 21.75; few standard and good steers 17.00-19.00; utility steers 12.00-15.00; heifers scarce, scattered sales standard and utility 14.00-16.00; cutter and utility cows 9.00-12.50; few utility bulls, 16.50; individual 17.00; few cutter bulls 13.50-14.00. Calves salable 50; scattered early sales good and choice vealers steady at 17.00-21.00; little done on lower grades. Hogs salable 300; few early sales U. S. Nos. 1 and 2, 180-235 lbs. butchers 19.00-19.50; little done on No. 3 butchers; few 360-450 lb sows 12.00-15.50. Cows: few sales steady to weak; around 2 1/2 loads high choice fed steers 1.152 lbs. 22.25; part load 1,273 lb. 21.75; few standard and good steers 17.00-19.00; utility steers 12.00-15.00; heifers scarce, scattered sales standard and utility 14.00-16.00; cutter and utility cows 9.00-12.50; few utility bulls, 16.50; individual 17.00; few cutter bulls 13.50-14.00. Calves salable 50; scattered early sales good and choice vealers steady at 17.00-21.00; little done on lower grades. Hogs salable 300; few early sales U. S. Nos. 1 and 2, 180-235 lbs. butchers 19.00-19.50; little done on No. 3 butchers; few 360-450 lb sows 12.00-15.50. Cows: few sales steady to weak; around 2 1/2 loads high choice fed steers 1.152 lbs. 22.25; part load 1,273 lb. 21.75; few standard and good steers 17.00-19.00; utility steers 12.00-15.00; heifers scarce, scattered sales standard and utility 14.00-16.00; cutter and utility cows 9.00-12.50; few utility bulls, 16.50; individual 17.00; few cutter bulls 13.50-14.00. Calves salable 50; scattered early sales good and choice vealers steady at 17.00-21.00; little done on lower grades. Hogs salable 300; few early sales U. S. Nos. 1 and 2, 180-235 lbs. butchers 19.00-19.50; little done on No. 3 butchers; few 360-450 lb sows 12.00-15.50. Cows: few sales steady to weak; around 2 1/2 loads high choice fed steers 1.152 lbs. 22.25; part load 1,273 lb. 21.75; few standard and good steers 17.00-19.00; utility steers 12.00-15.00; heifers scarce, scattered sales standard and utility 14.00-16.00; cutter and utility cows 9.00-12.50; few utility bulls, 16.50; individual 17.00; few cutter bulls 13.50-14.00. Calves salable 50; scattered early sales good and choice vealers steady at 17.00-21.00; little done on lower grades. Hogs salable 300; few early sales U. S. Nos. 1 and 2, 180-235 lbs. butchers 19.00-19.50; little done on No. 3 butchers; few 360-450 lb sows 12.00-15.50. Cows: few sales steady to weak; around 2 1/2 loads high choice fed steers 1.152 lbs. 22.25; part load 1,273 lb. 21.75; few standard and good steers 17.00-19.00; utility steers 12.00-15.00; heifers scarce, scattered sales standard and utility 14.00-16.00; cutter and utility cows 9.00-12.50; few utility bulls, 16.50; individual 17.00; few cutter bulls 13.50-14.00. Calves salable 50; scattered early sales good and choice vealers steady at 17.00-21.00; little done on lower grades. Hogs salable 300; few early sales U. S. Nos. 1 and 2, 180-235 lbs. butchers 19.00-19.50; little done on No. 3 butchers; few 360-450 lb sows 12.00-15.50. Cows: few sales steady to weak; around 2 1/2 loads high choice fed steers 1.152 lbs. 22.25; part load 1,273 lb. 21.75; few standard and good steers 17.00-19.00; utility steers 12.00-15.00; heifers scarce, scattered sales standard and utility 14.00-16.00; cutter and utility cows 9.00-12.50; few utility bulls, 16.50; individual 17.00; few cutter bulls 13.50-14.00. Calves salable 50; scattered early sales good and choice vealers steady at 17.00-21.00; little done on lower grades. Hogs salable 300; few early sales U. S. Nos. 1 and 2, 180-235 lbs. butchers 19.00-19.50; little done on No. 3 butchers; few 360-450 lb sows 12.00-15.50. Cows: few sales steady to weak; around 2 1/2 loads high choice fed steers 1.152 lbs. 22.25; part load 1,273 lb. 21.75; few standard and good steers 17.00-19.00; utility steers 12.00-15.00; heifers scarce, scattered sales standard and utility 14.00-16.00; cutter and utility cows 9.00-12.50; few utility bulls, 16.50; individual 17.00; few cutter bulls 13.50-14.00. Calves salable 50; scattered early sales good and choice vealers steady at 17.00-21.00; little done on lower grades. Hogs salable 300; few early sales U. S. Nos. 1 and 2, 180-235 lbs. butchers 19.00-19.50; little done on No. 3 butchers; few 360-450 lb sows 12.00-15.50. Cows: few sales steady to weak; around 2 1/2 loads high choice fed steers 1.152 lbs. 22.25; part load 1,273 lb. 21.75; few standard and good steers 17.00-19.00; utility steers 12.00-15.00; heifers scarce, scattered sales standard and utility 14.00-16.00; cutter and utility cows 9.00-12.50; few utility bulls, 16.50; individual 17.00; few cutter bulls 13.50-14.00. Calves salable 50; scattered early sales good and choice vealers steady at 17.00-21.00; little done on lower grades. Hogs salable 300; few early sales U. S. Nos. 1 and 2, 180-235 lbs. butchers 19.00-19.50; little done on No. 3 butchers; few 360-450 lb sows 12.00-15.50. Cows: few sales steady to weak; around 2 1/2 loads high choice fed steers 1.152 lbs. 22.25; part load 1,273 lb. 21.75; few standard and good steers 17.00-19.00; utility steers 12.00-15.00; heifers scarce, scattered sales standard and utility 14.00-16.00; cutter and utility cows 9.00-12.50; few utility bulls, 16.50; individual 17.00; few cutter bulls 13.50-14.00. Calves salable 50; scattered early sales good and choice vealers steady at 17.00-21.00; little done on lower grades. Hogs salable 300; few early sales U. S. Nos. 1 and 2, 180-235 lbs. butchers 19.00-19.50; little done on No. 3 butchers; few 360-450 lb sows 12.00-15.50. Cows: few sales steady to weak; around 2 1/2 loads high choice fed steers 1.152 lbs. 22.25; part load 1,273 lb. 21.75; few standard and good steers 17.00-19.00; utility steers 12.00-15.00; heifers scarce, scattered sales standard and utility 14.00-16.00; cutter and utility cows 9.00-12.50; few utility bulls, 16.50; individual 17.00; few cutter bulls 13.50-14.00. Calves salable 50; scattered early sales good and choice vealers steady at 17.00-21.00; little done on lower grades. Hogs salable 300; few early sales U. S. Nos. 1 and 2, 180-235 lbs. butchers 19.00-19.50; little done on No. 3 butchers; few 360-450 lb sows 12.00-15.50. Cows: few sales steady to weak; around 2 1/2 loads high choice fed steers 1.152 lbs. 22.25; part load 1,273 lb. 21.75; few standard and good steers 17.00-19.00; utility steers 12.00-15.00; heifers scarce, scattered sales standard and utility 14.00-16.00; cutter and utility cows 9.00-12.50; few utility bulls, 16.50; individual 17.00; few cutter bulls 13.50-14.00. Calves salable 50; scattered early sales good and choice vealers steady at 17.00-21.00; little done on lower grades. Hogs salable 300; few early sales U. S. Nos. 1 and 2, 180-235 lbs. butchers 19.00-19.50; little done on No. 3 butchers; few 360-450 lb sows 12.00-15.50. Cows: few sales steady to weak; around 2 1/2 loads high choice fed steers 1.152 lbs. 22.25; part load 1,273 lb. 21.75; few standard and good steers 17.00-19.00; utility steers 12.00-15.00; heifers scarce, scattered sales standard and utility 14.00-16.00; cutter and utility cows 9.00-12.50; few utility bulls, 16.50; individual 17.00; few cutter bulls 13.50-14.00. Calves salable 50; scattered early sales good and choice vealers steady at 17.00-21.00; little done on lower grades. Hogs salable 300; few early sales U. S. Nos. 1 and 2, 180-235 lbs. butchers 19.00-19.50; little done on No. 3 butchers; few 360-450 lb sows 12.00-15.50. Cows: few sales steady to weak; around 2 1/2 loads high choice fed steers 1.152 lbs. 22.25; part load 1,273 lb. 21.75; few standard and good steers 17.00-19.00; utility steers 12.00-15.00; heifers scarce, scattered sales standard and utility 14.00-16.00; cutter and utility cows 9.00-12.50; few utility bulls, 16.50; individual 17.00; few cutter bulls 13.50-14.00. Calves salable 50; scattered early sales good and choice vealers steady at 17.00-21.00; little done on lower grades. Hogs salable 300; few early sales U. S. Nos. 1 and 2, 180-235 lbs. butchers 19.00-19.50; little done on No. 3 butchers; few 360-450 lb sows 12.00-15.50. Cows: few sales steady to weak; around 2 1/2 loads high choice fed steers 1.152 lbs. 22.25; part load 1,273 lb. 21.75; few standard and good steers 17.00-19.00; utility steers 12.00-15.00; heifers scarce, scattered sales standard and utility 14.00-16.00; cutter and utility cows 9.00-12.50; few utility bulls, 16.50; individual 17.00; few cutter bulls 13.50-14.00. Calves salable 50; scattered early sales good and choice vealers steady at 17.00-21.00; little done on lower grades. Hogs salable 300; few early sales U. S. Nos. 1 and 2, 180-235 lbs. butchers 19.00-19.50; little done on No. 3 butchers; few 360-450 lb sows 12.00-15.50. Cows: few sales steady to weak; around 2 1/2 loads high choice fed steers 1.152 lbs. 22.25; part load 1,273 lb. 21.75; few standard and good steers 17.00-19.00; utility steers 12.00-15.00; heifers scarce, scattered sales standard and utility 14.00-16.00; cutter and utility cows 9.00-12.50; few utility bulls, 16.50; individual 17.00; few cutter bulls 13.50-14.00. Calves salable 50; scattered early sales good and choice vealers steady at 17.00-21.00; little done on lower grades. Hogs salable 300; few early sales U. S. Nos. 1 and 2, 180-235 lbs. butchers 19.00-19.50; little done on No. 3 butchers; few 360-450 lb sows 12.00-15.50. Cows: few sales steady to weak; around 2 1/2 loads high choice fed steers 1.152 lbs. 22.25; part load 1,273 lb. 21.75; few standard and good steers 17.00-19.00; utility steers 12.00-15.00; heifers scarce, scattered sales standard and utility 14.00-16.00; cutter and utility cows 9.00-12.50; few utility bulls, 16.50; individual 17.00; few cutter bulls 13.50-14.00. Calves salable 50; scattered early sales good and choice vealers steady at 17.00-21.00; little done on lower grades. Hogs salable 300; few early sales U. S. Nos. 1 and 2, 180-235 lbs. butchers 19.00-19.50; little done on No. 3 butchers; few 360-450 lb sows 12.00-15.50. Cows: few sales steady to weak; around 2 1/2 loads high choice fed steers 1.152 lbs. 22.25; part load 1,273 lb. 21.75; few standard and good steers 17.00-19.00; utility steers 12.00-15.00; heifers scarce, scattered sales standard and utility 14.00-16.00; cutter and utility cows 9.00-12.50; few utility bulls, 16.50; individual 17.00; few cutter bulls 13.50-14.00. Calves salable 50; scattered early sales good and choice vealers steady at 17.00-21.00; little done on lower grades. Hogs salable 300; few early sales U. S. Nos. 1 and 2, 180-235 lbs. butchers 19.00-19.50; little done on No. 3 butchers; few 360-450 lb sows 12.00-15.50. Cows: few sales steady to weak; around 2 1/2 loads high choice fed steers 1.152 lbs. 22.25; part load 1,273 lb. 21.75; few standard and good steers 17.00-19.00; utility steers 12.00-15.00; heifers scarce, scattered sales standard and utility 14.00-16.00; cutter and utility cows 9.00-12.50; few utility bulls, 16.50; individual 17.00; few cutter bulls 13.50-14.00. Calves salable 50; scattered early sales good and choice vealers steady at 17.00-21.00; little done on lower grades. Hogs salable 300; few early sales U. S. Nos. 1 and 2, 180-235 lbs. butchers 19.00-19.50; little done on No. 3 butchers; few 360-450 lb sows 12.00-15.50. Cows: few sales steady to weak; around 2 1/2 loads high choice fed steers 1.152 lbs. 22.25; part load 1,273 lb. 21.75; few standard and good steers 17.00-19.00; utility steers 12.00-15.00; heifers scarce, scattered sales standard and utility 14.00-16.00; cutter and utility cows 9.00-12.50; few utility bulls, 16.50; individual 17.00; few cutter bulls 13.50-14.00. Calves salable 50; scattered early sales good and choice vealers steady at 17.00-21.00; little done on lower grades. Hogs salable 300; few early sales U. S. Nos. 1 and 2, 180-235 lbs. butchers 19.00-19.50; little done on No. 3 butchers; few 360-450 lb sows 12.00-15.50. Cows: few sales steady to weak; around 2 1/2 loads high choice fed steers 1.152 lbs. 22.25; part load 1,273 lb. 21.75; few standard and good steers 17